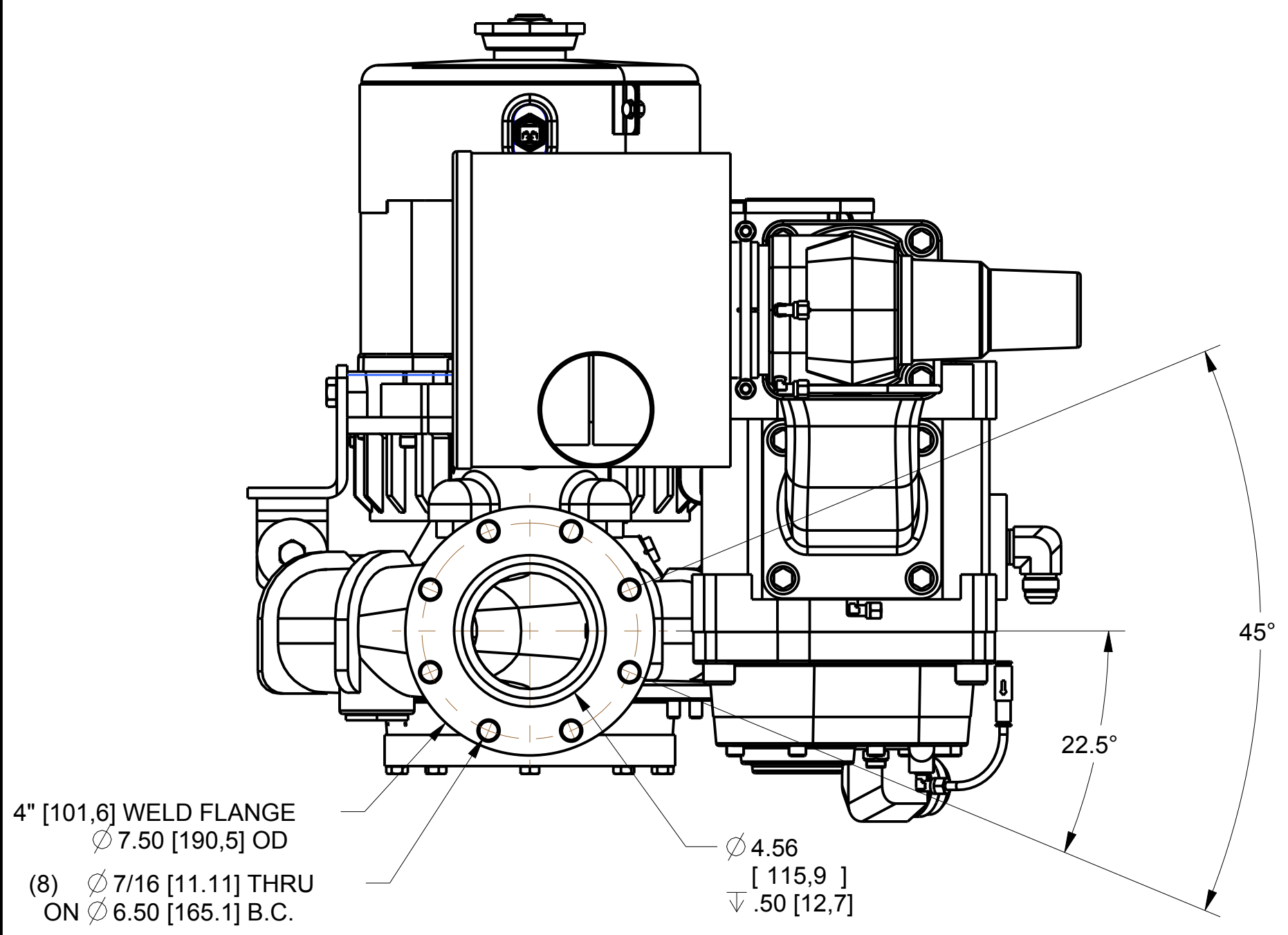
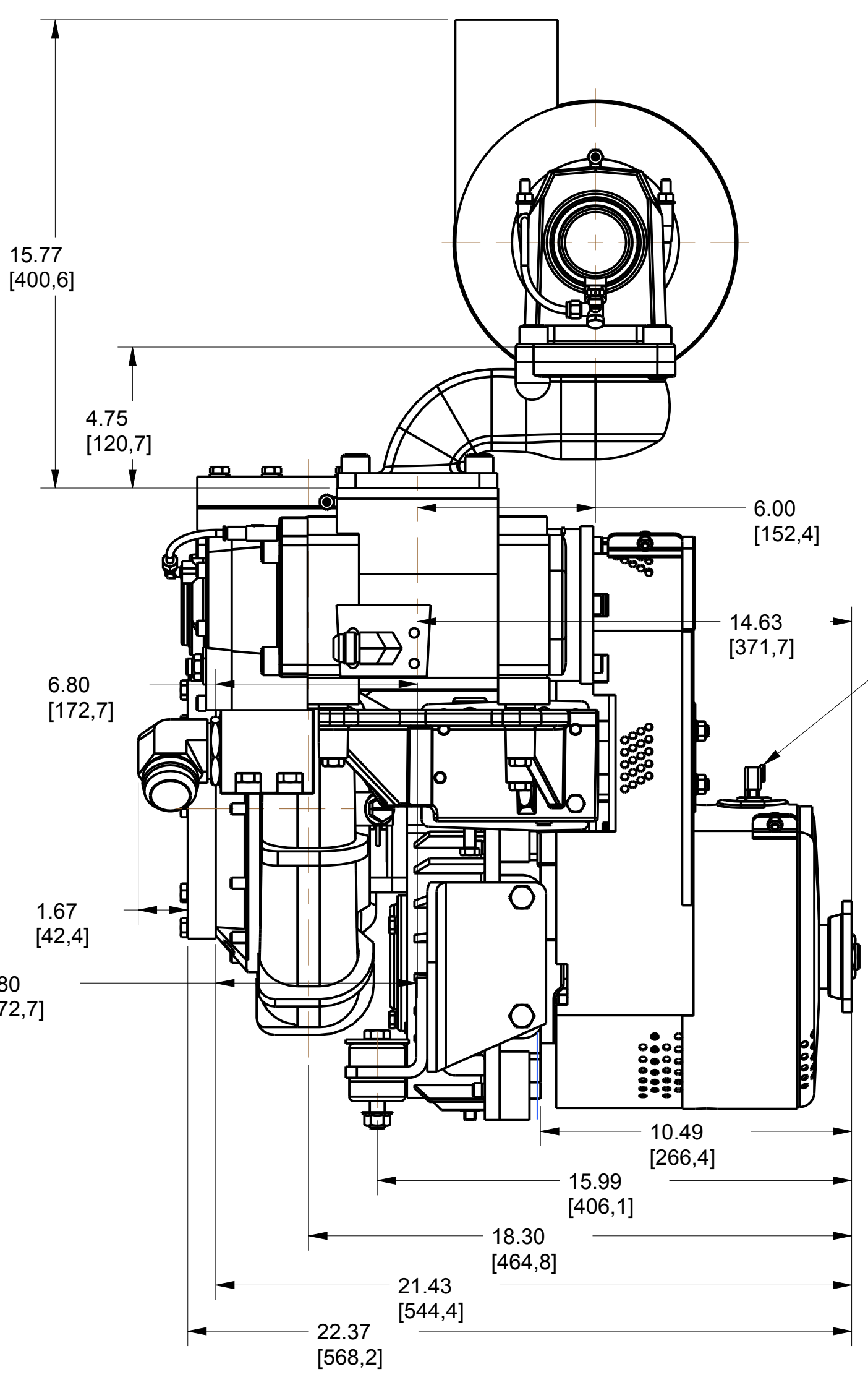
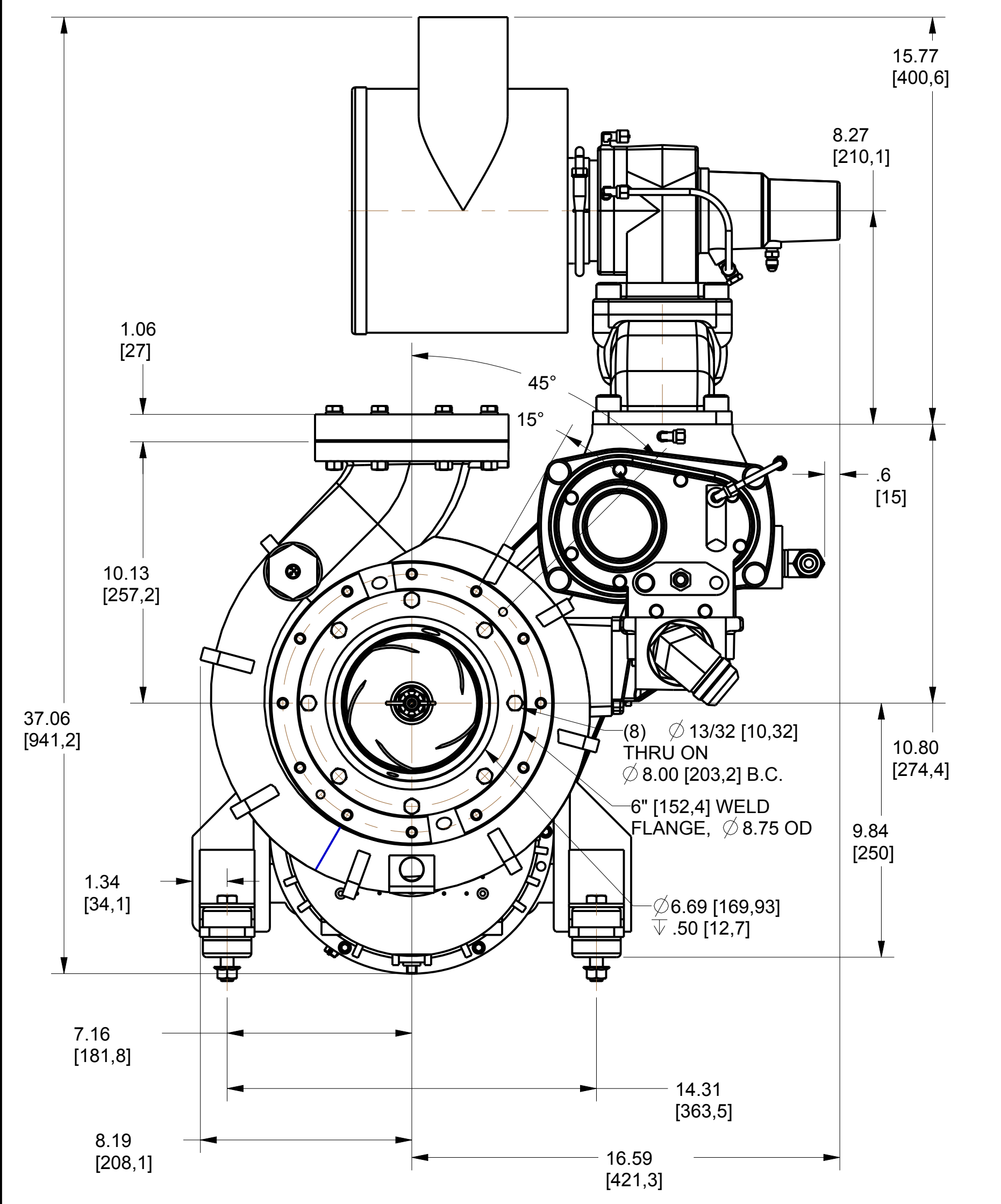
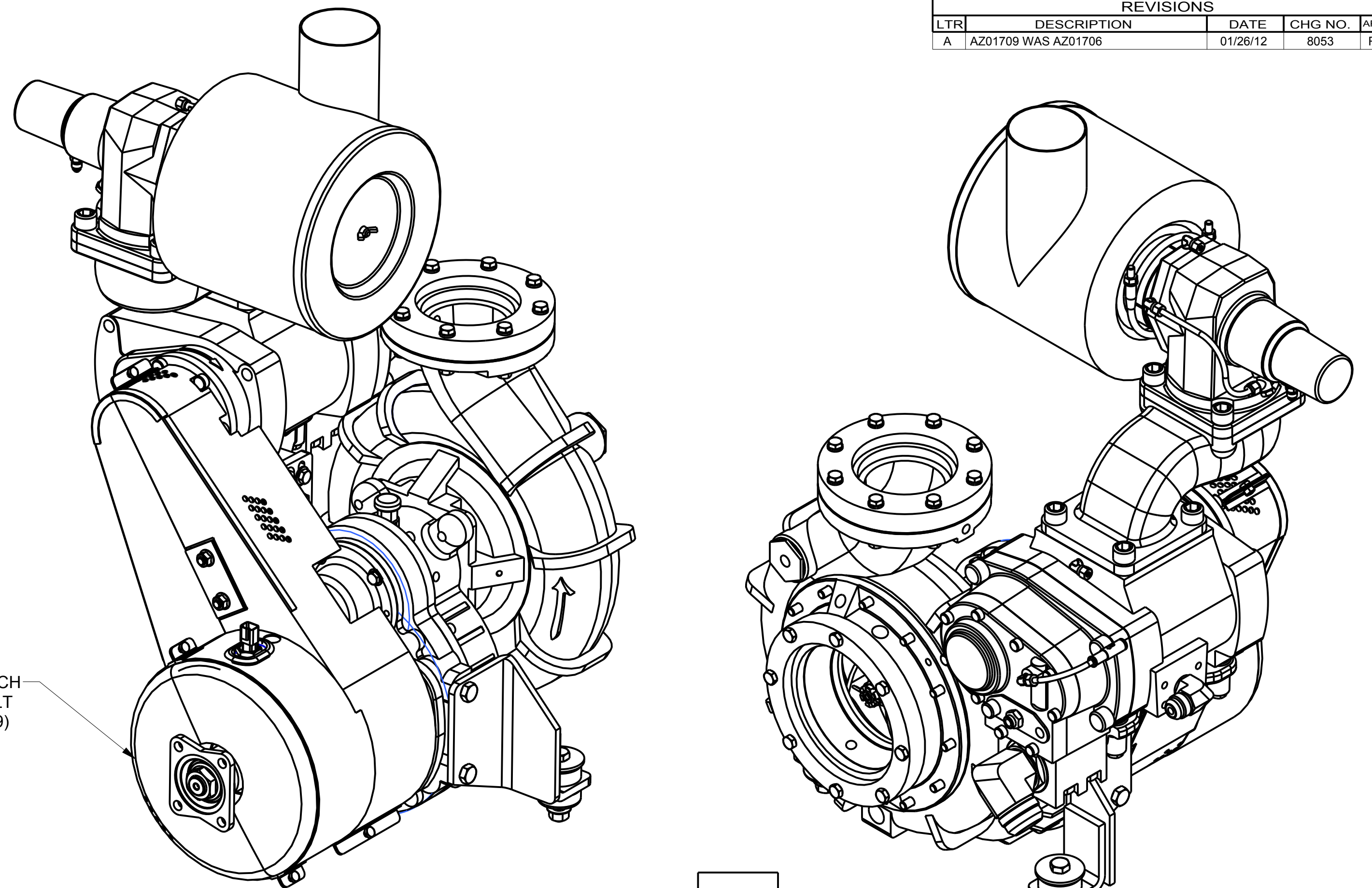


REVISIONS				
LTR	DESCRIPTION	DATE	CHG NO.	APPRD
A	AZ01709 WAS AZ01706	01/26/12	8053	RJG



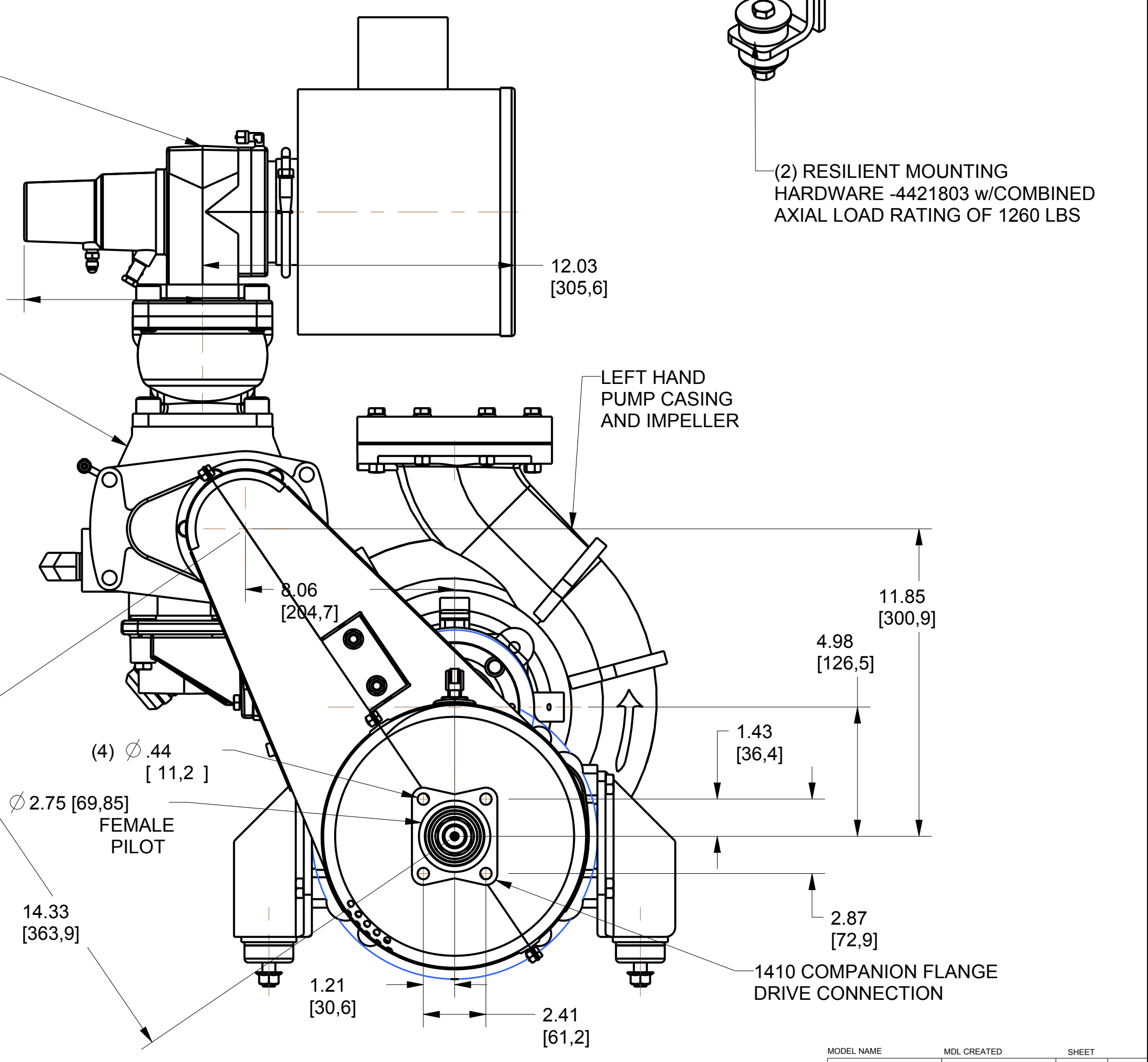
FACING INPUT SHAFT
 CLOCKWISE INPUT
 ROTATION REQUIRED



AZ00806 - OFFSET AIR INLET VALVE ASSEMBLY - NOTE THAT A REMOTE MOUNT AIR CLEANER ASSEMBLY MAY BE USED, AND THE OFFSET ELBOW ELIMINATED

225 CFM ENDURO 12 TS COMPRESSOR ASSY - AZ00407

DEUTSCH RECEPTACLE - 2606008
 (2) DEUTSCH 16 GA CONTACT PINS - 2606001
 DEUTSCH WEDGE - 2606011
 MATES WITH CLUTCH CIRCUIT ON AUTOCAFS COMMANDER WIRING HARNESS



APPROX. WEIGHT = 500 LB

REMOVE SHARP EDGES		INCH (MILLIMETER)		OLD PART NO.		TOLERANCE EXCEPT AS NOTED		W.S. Darley & Co. ITASCA, IL - CHIPPEWA FALLS, WI	
MATERIAL DESCRIPTION:		MATERIAL NO.		PATTERN NO.		DWG - KSPBC, 2GR, PTO, LOCK-ON, BELT DR. COMP DIMENSIONAL		DATE 23-Nov-10	
THIS DESIGN IS THE PROPERTY OF W.S. DARLEY AND CO. - UNAUTHORIZED REPRODUCTION IS PROHIBITED		DO NOT SCALE PRINT		DRY R/JG		SCALE 1/4		DKD0423	

MODEL NAME: DKD0414
 MDL CREATED: 09/10/10
 SHEET: 1/1