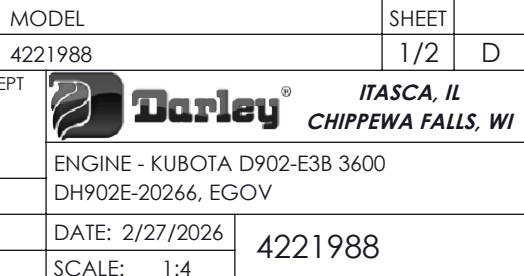
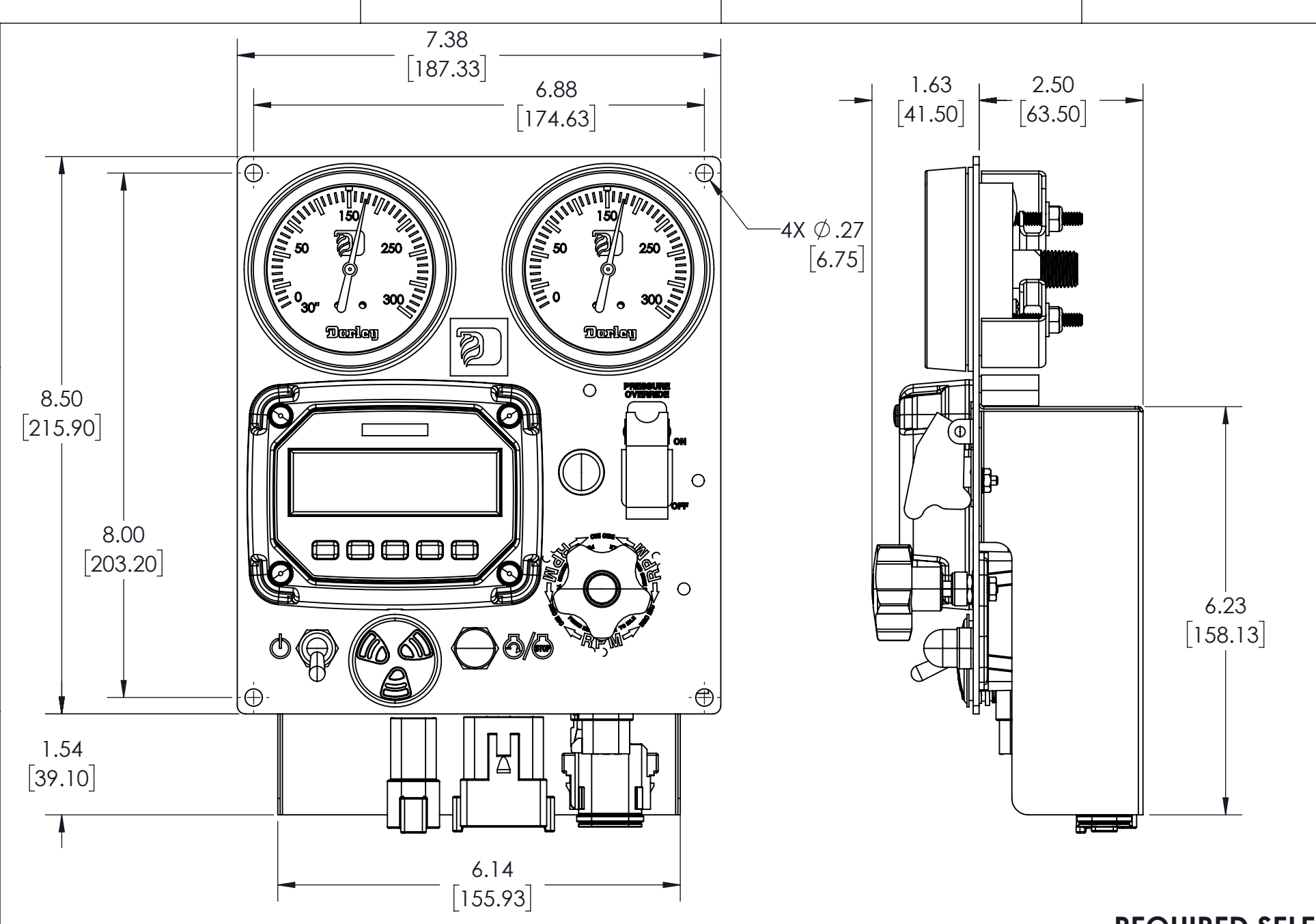


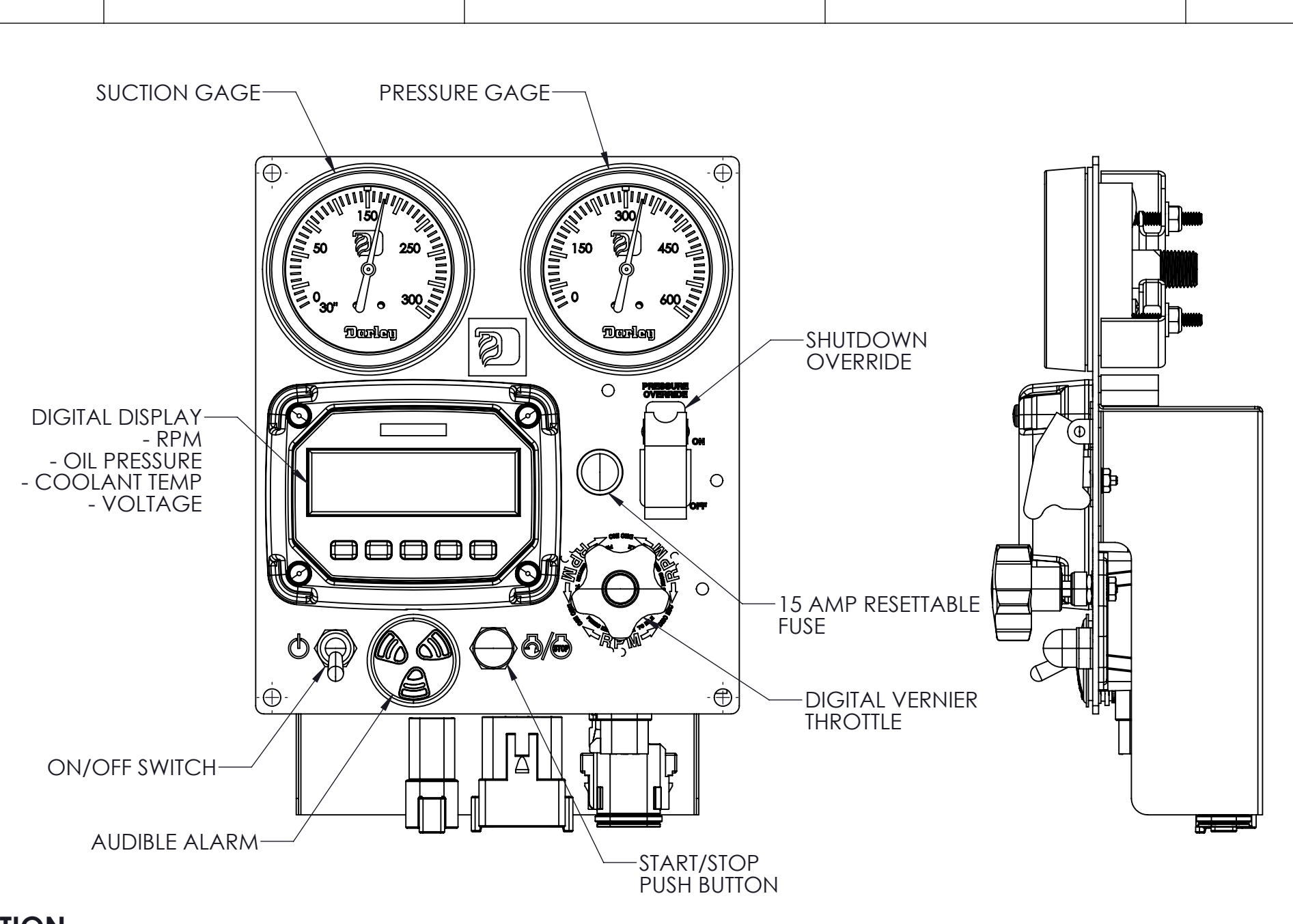
KUBOTA DH902E-20266
 TIER 4 OPEN POWER UNIT
 STANDARD RADIATOR AND SUCTION FAN
 12V 40 AMP ALTERNATOR
 AIR CLEANER W/FIRE RETARDANT ELEMENT
 STANDARD VERTICAL MUFFLER
 SAE 5 BELL HOUSING
 SAE 6.5 FLYWHEEL
 FUEL FILTER
 OIL AND ANTIFREEZE
 STANDARD FRONT AND REAR MOUNTING FEET
 MAIN WIRE HARNESS

THIRD ANGLE PROJECTION		MODEL	4221988	SHEET	1/2
REMOVE SHARP EDGES		MATERIAL NO.	PATTERN NO.	TOLERANCE EXCEPT AS NOTED .00 ±.03 .000 ±.010 ANGLES ±1	
MATERIAL DESCRIPTION		ENGINE - KUBOTA D902-E3B 3600	DRWN SMS		
EPI - DH902E-20266		330.00 LBS	DATE: 2/27/2026		
THIS DESIGN IS THE PROPERTY OF WS. DARLEY CO. - UNAUTHORIZED REPRODUCTION IS PROHIBITED		ALL DIMENSIONS IN INCHES UNLESS NOTED		SCALE: 1:4	
DO NOT SCALE PRINT		TRCD		4221988	



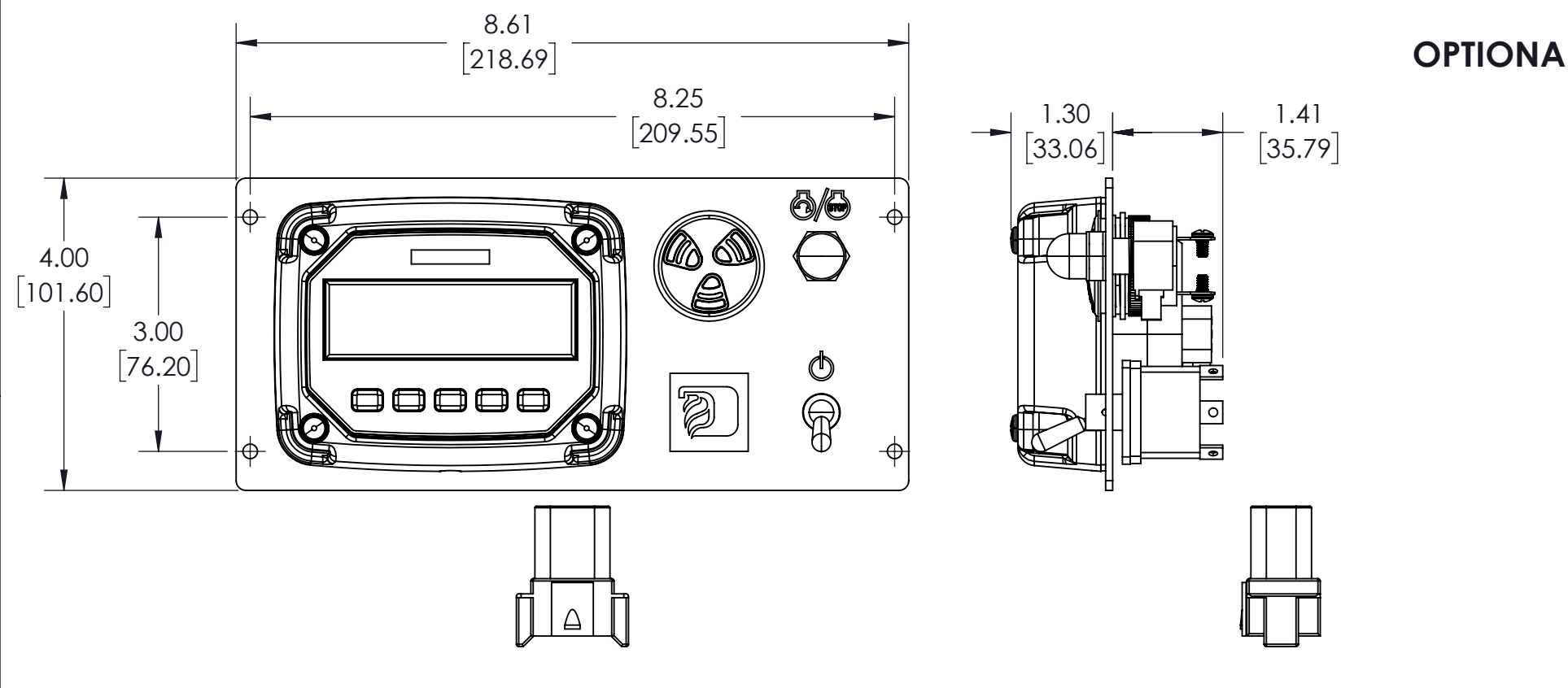


**AC02420 - CONTROL PANEL - MAIN - EGOV
0-300 GAGE**

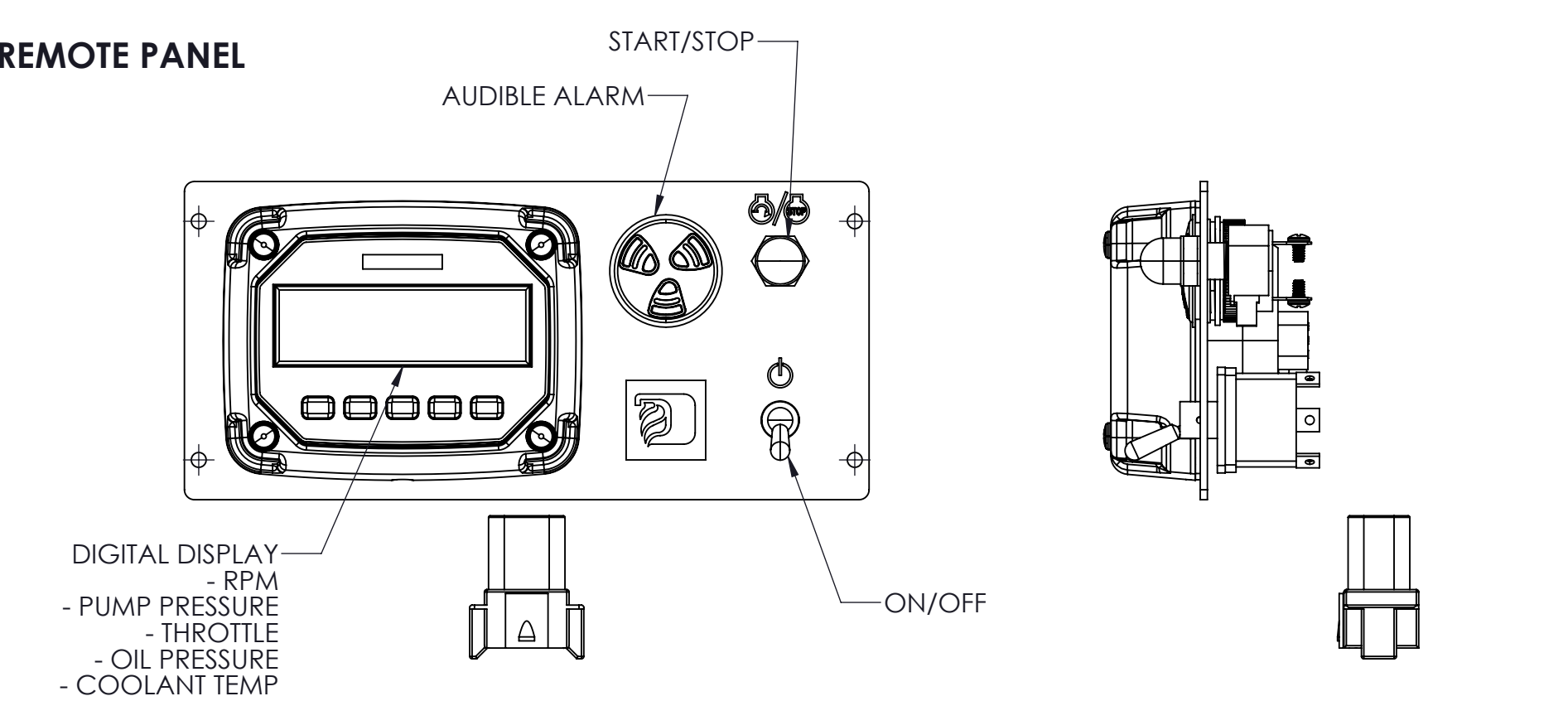


**AC02421 - CONTROL PANEL - MAIN - EGOV
0-600 GAGE**

REQUIRED SELECTION

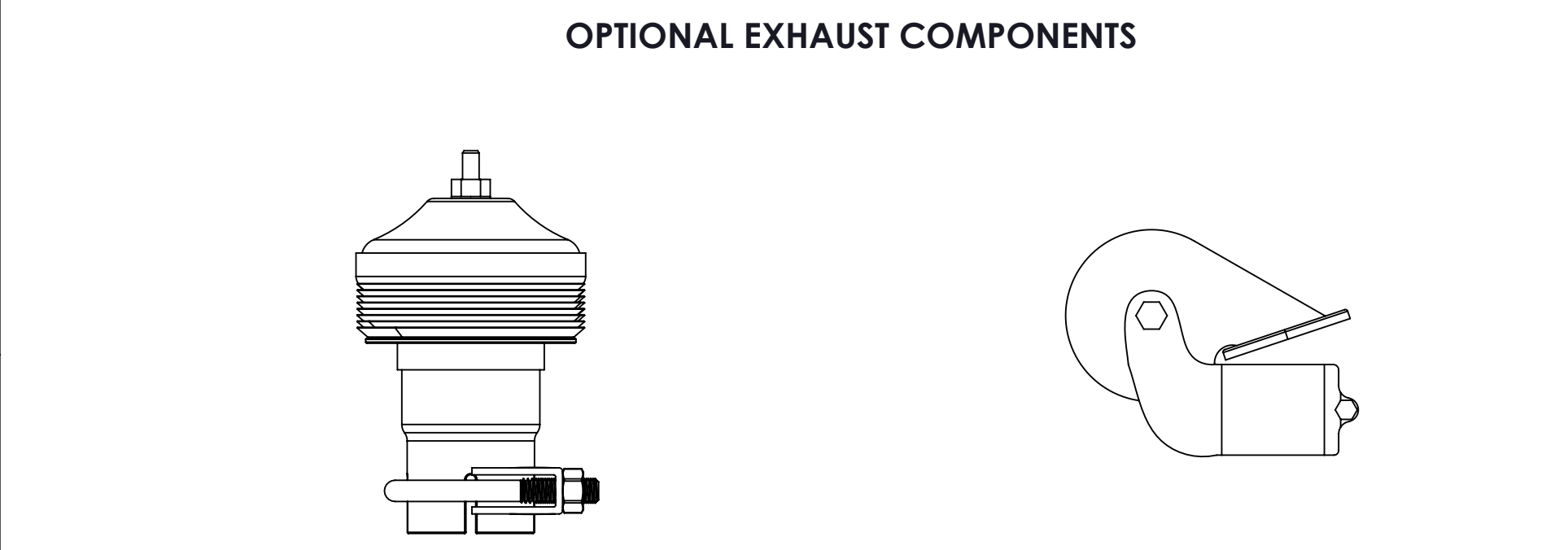
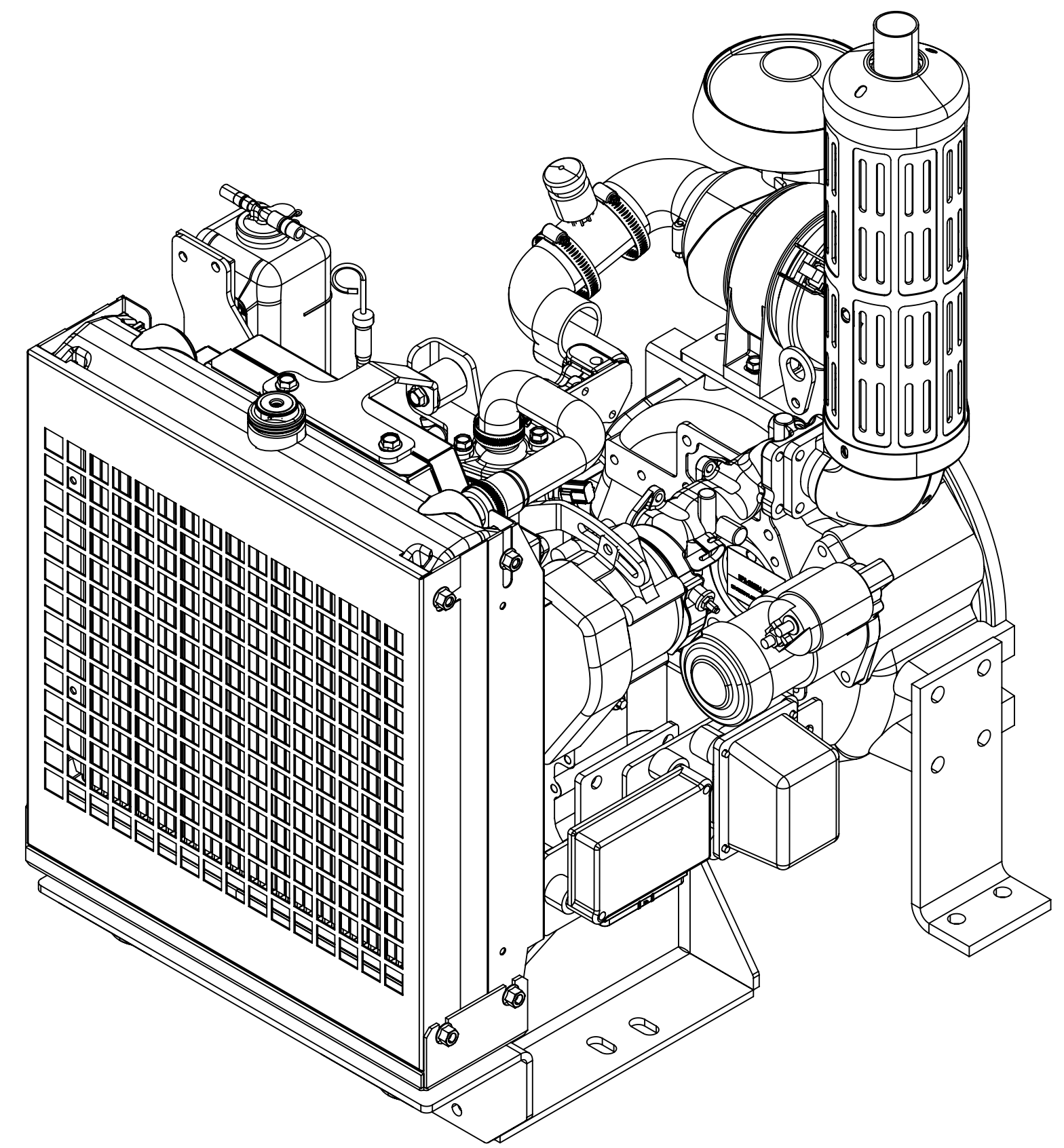


OPTIONAL REMOTE PANEL



DUAL CONTROL PANEL OPTIONS: FOLLOWING ASSEMBLIES INLCUDE MAIN AND REMOTE PANEL

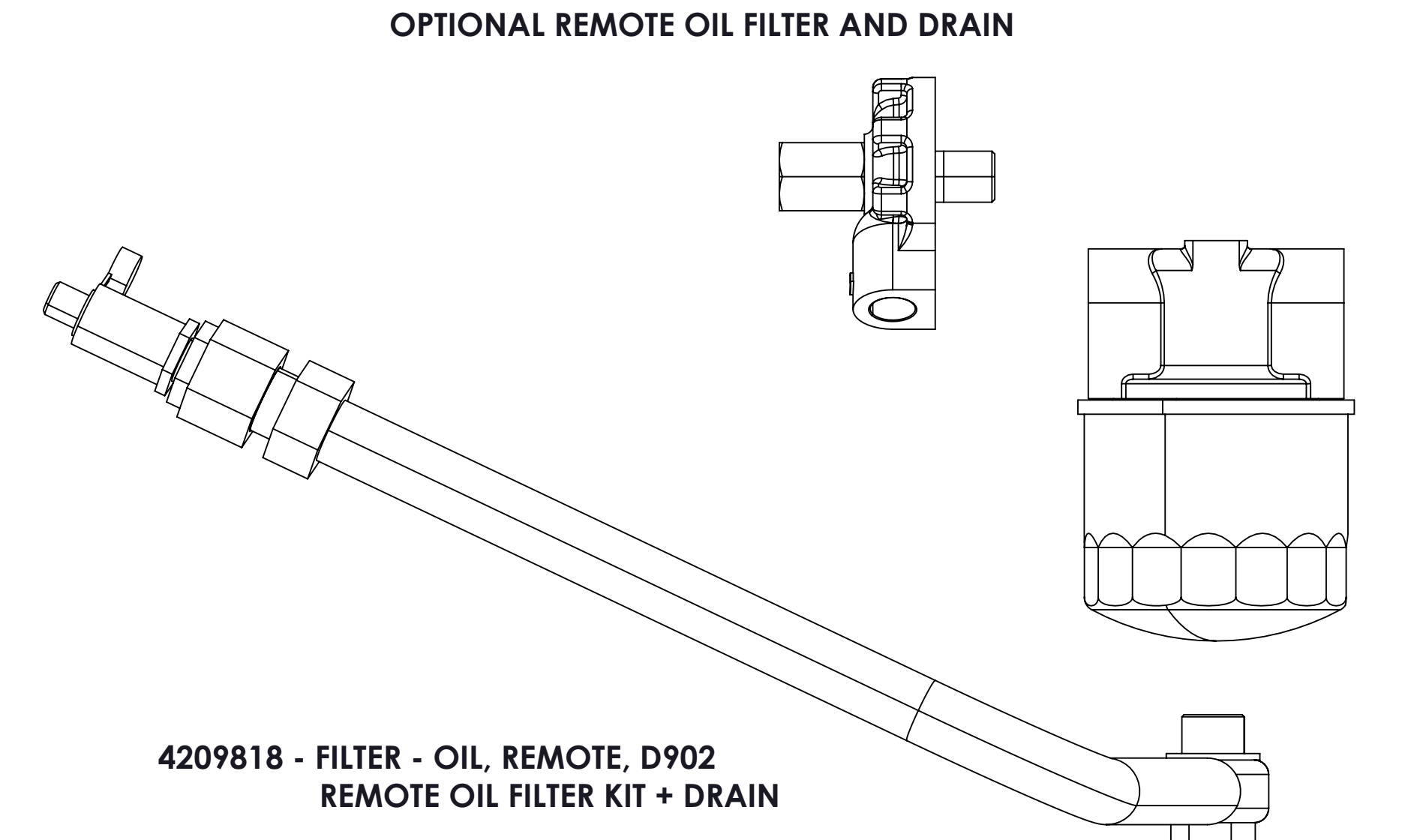
- AC02425 - CONTROL PANEL - EGOV DUAL - 0-300 - 30' REMOTE HARNESS
- AC02427 - CONTROL PANEL - EGOV DUAL - 0-600 - 30' REMOTE HARNESS



OPTIONAL EXHAUST COMPONENTS

**KE00511 - KIT, SPARK ARRESTOR
1.50"**

**4200703 - KUBOTA RAIN CAP - 1.38"
ENGINE POWER RC 66**



OPTIONAL REMOTE OIL FILTER AND DRAIN

**4209818 - FILTER - OIL, REMOTE, D902
REMOTE OIL FILTER KIT + DRAIN**

REMOVE SHARP EDGES		THIRD ANGLE PROJECTION		MODEL	SHEET
MATERIAL DESCRIPTION		OLD PART NO.		AC02420	2/2
MASS	MATERIAL NO.	PATTERN NO.	TOLERANCE EXCEPT AS NOTED	Darley ITASCA, IL CHIPPewa FALLS, WI	
2.44 LBS			.00 ±.03 .000 ±.010 ANGLES ±1	CONTROL PANEL - MAIN - EGOV	
THIS DESIGN IS THE PROPERTY OF WS. DARLEY CO. - UNAUTHORIZED REPRODUCTION IS PROHIBITED		ALL DIMENSIONS IN INCHES UNLESS NOTED		DRWN	SMS
		DO NOT SCALE PRINT		DATE: 10/27/2025	4221988
				SCALE: 1:2	