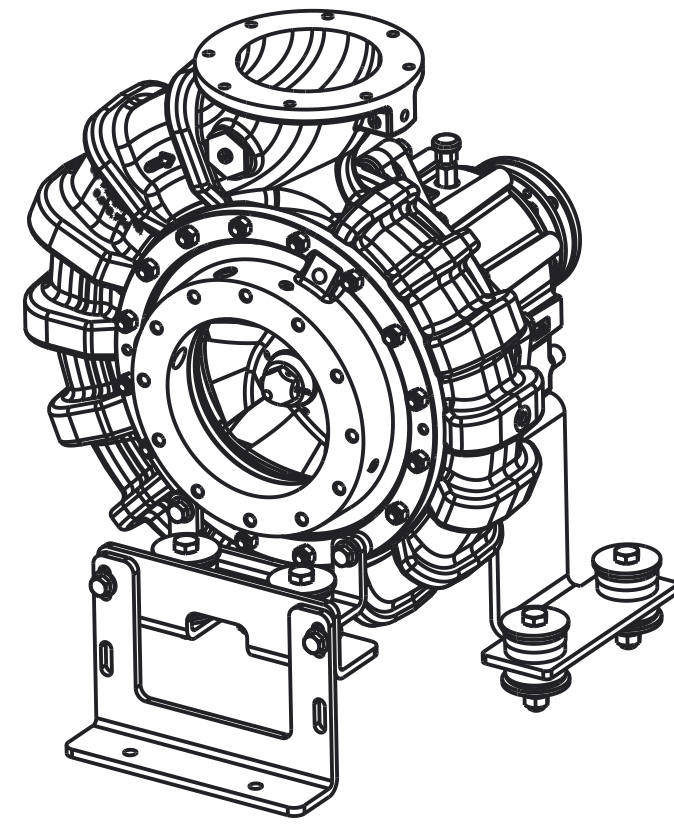
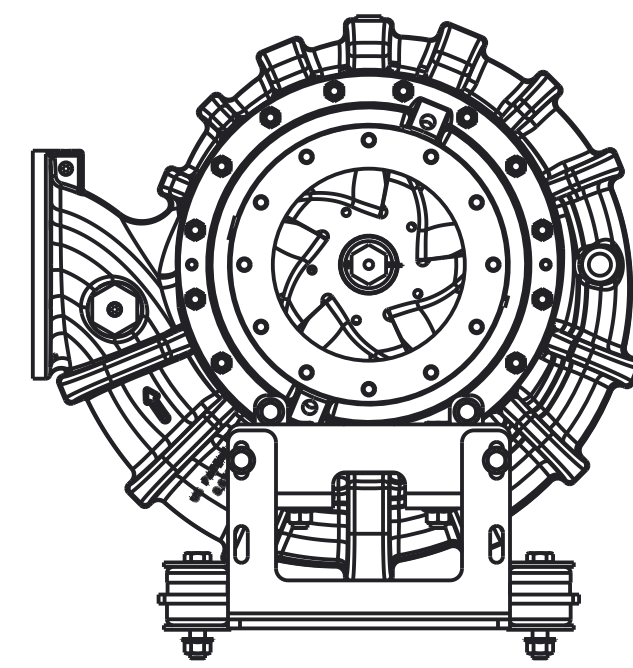


REVISIONS				
LTR	DESCRIPTION	DATE	CHG NO.	APPRD

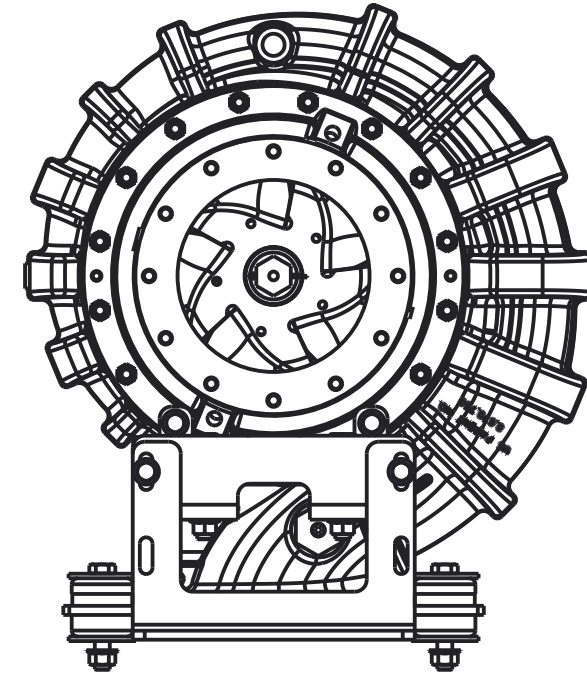
OPTIONAL PUMP CASING POSITIONS
DISCHARGE CENTERED TO SUCTION



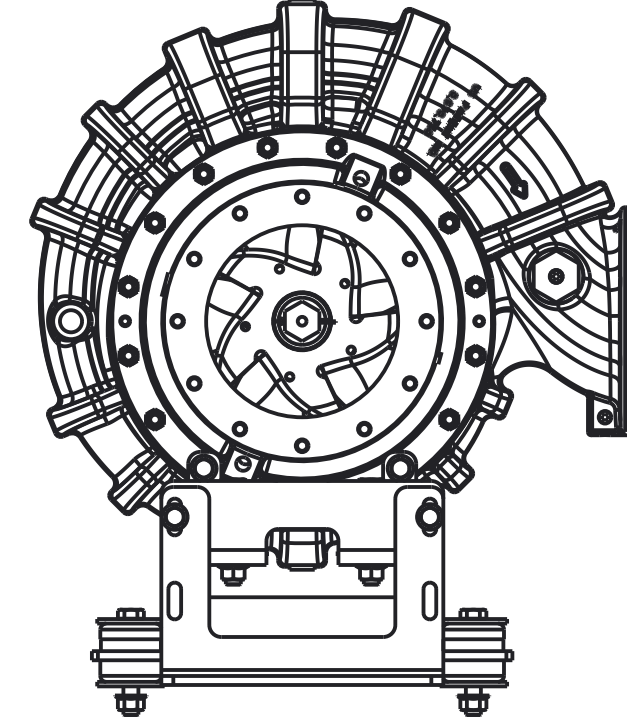
SCALE 1/8



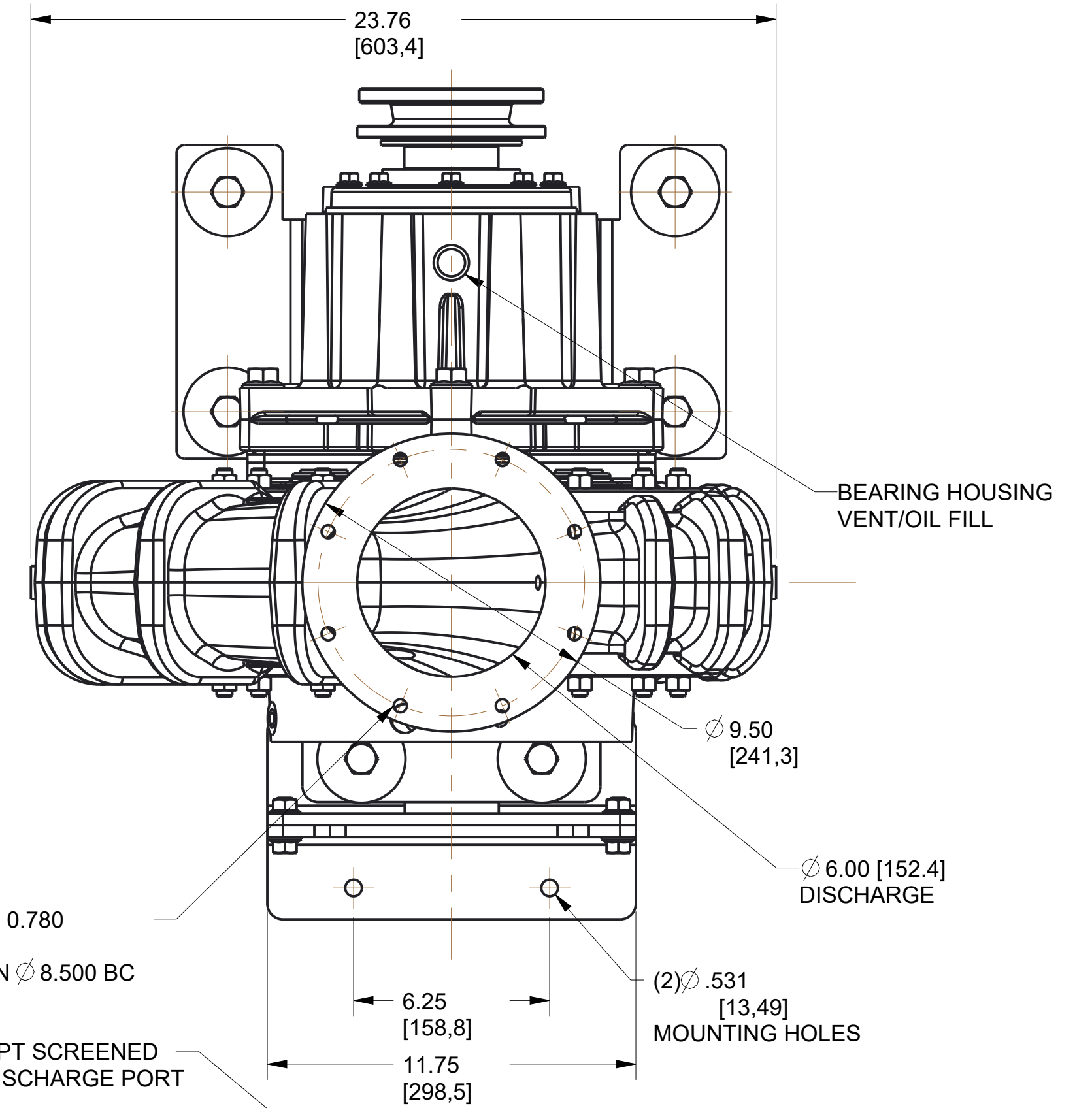
9 O'CLOCK DISCHARGE



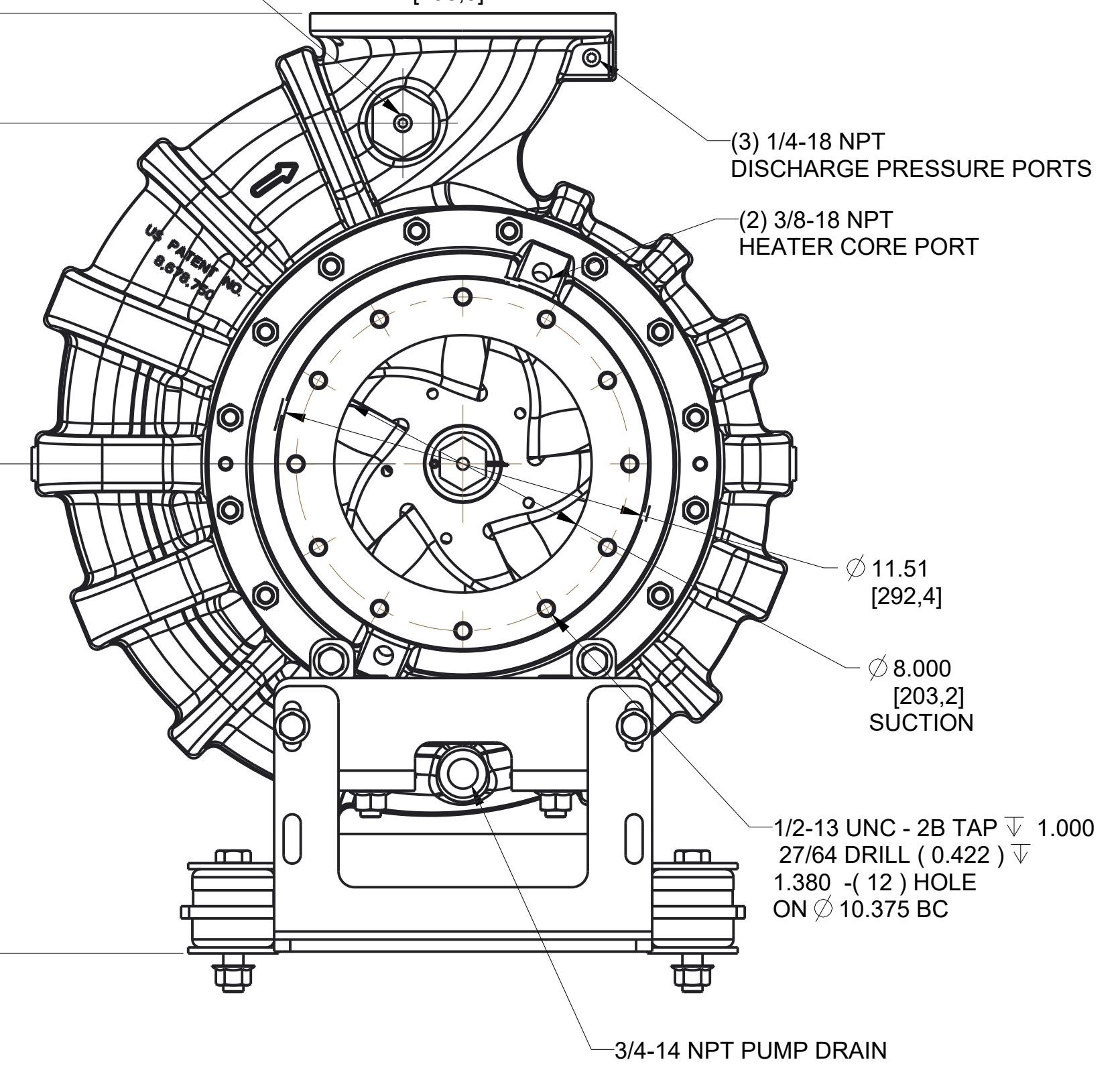
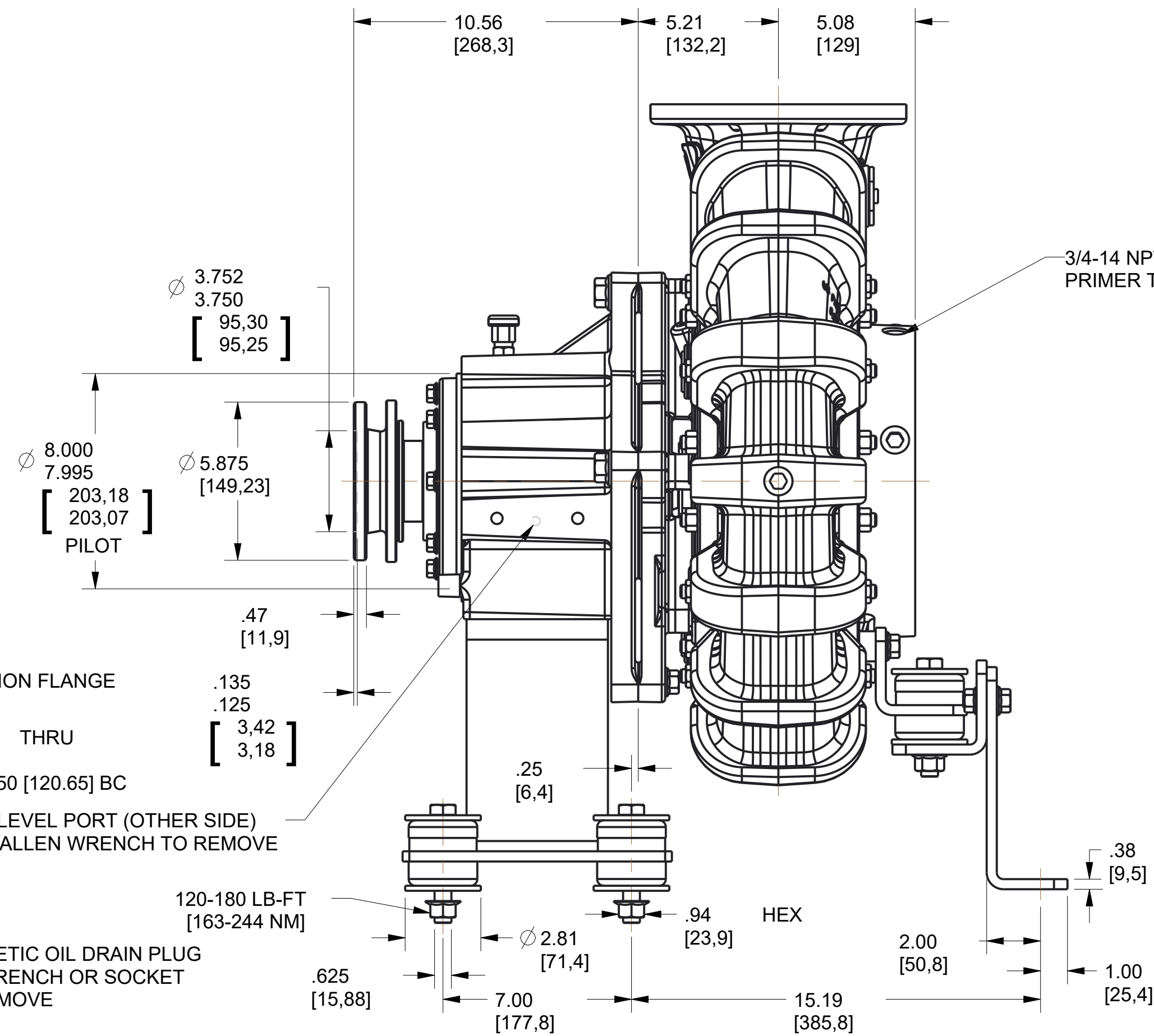
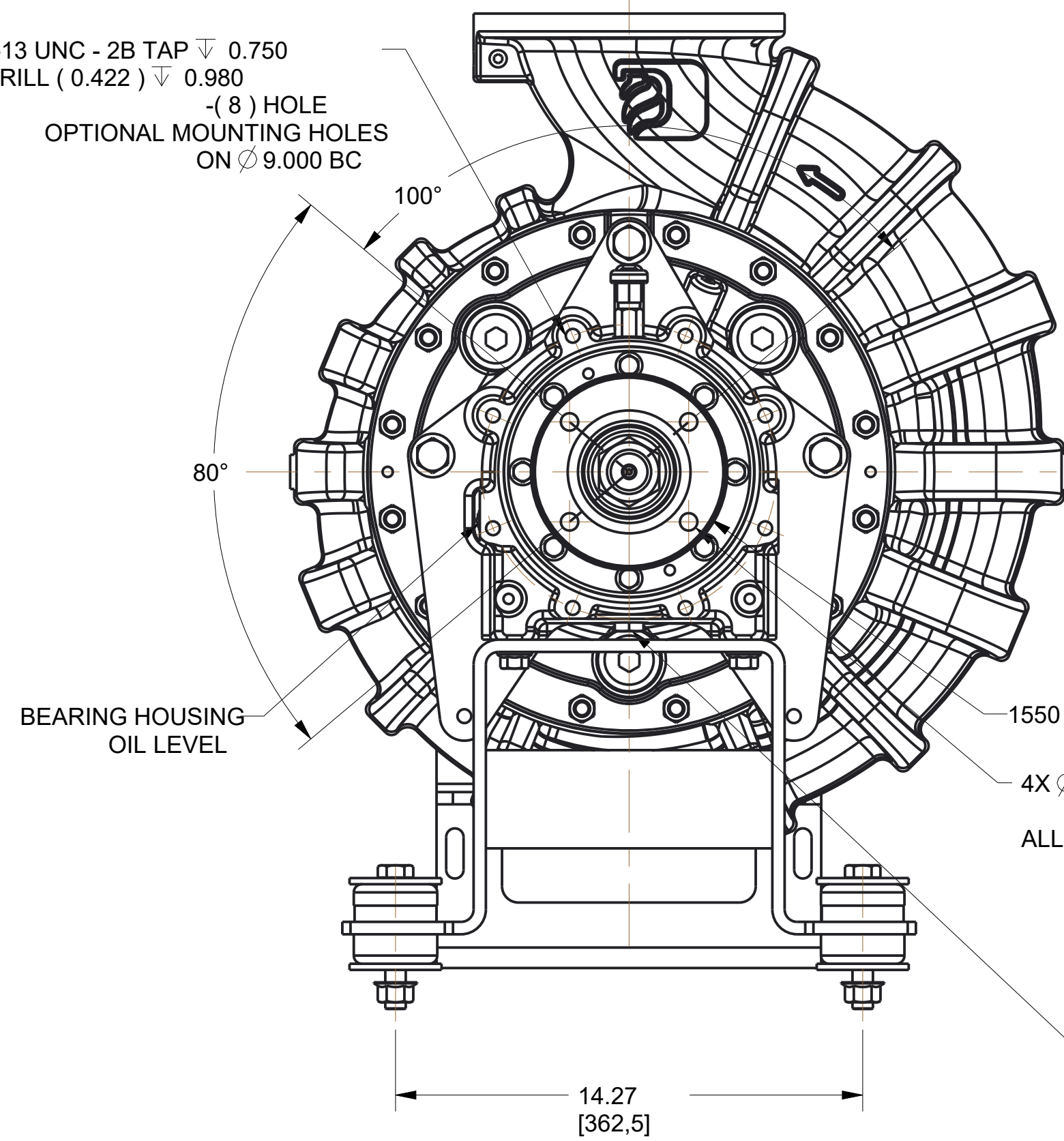
6 O'CLOCK DISCHARGE



3 O'CLOCK DISCHARGE



1/2-13 UNC - 2B TAP ∇ 0.750
27/64 DRILL (0.422) ∇ 0.980
- (8) HOLE
OPTIONAL MOUNTING HOLES
ON Ø 9.000 BC



REFERENCE NOTES:

- 1) BILL OF MATERIAL AS SHOWN:
PZ00005 - CAST IRON PUMP ASSEMBLY
TP02100 - TRANSMISSION ASSEMBLY
KM02100 - SUCTION HEAS MOUNTING FOOT ASSEMBLY WITH VIBRATION ISOLATORS
KM02104 - TRANSMISSION MOUNTING FOOT ASSEMBLY WITH VIBRATION ISOLATORS
4822501 - 1550 COMPANION FLANGE
2908600 - LEFT HAND IMPELLER
- 2) WORKS FROM AN OPPOSITE ENGINE ROTATION DRIVE SOURCE.
- 3) MASS MOMENT OF INERTIA OF SPINNING COMPONENTS, MINUS BEARINGS AND WOODRUFF KEY, IS 5.78 LBM-FT*2.
- 4) DRY WEIGHT = 551 LB [250 KG].
- 5) USES 80W-90 OIL - CHANGE OIL EVERY 50 HOURS OF ACCUMULATED USAGE, AFTER A CONTINUOUS USE OF 6 HOURS OR EVERY 6 MONTHS - WHICH EVER OCCURS FIRST.
- 6) 119,668 NM PER RADIAN TORSIONAL STIFFNESS OF SPINNING COMPONENTS.

MODEL NAME: DZD0040
MFL CREATED: 17APR2015
SHEET: 1/1

REMOVE SHARP EDGES		INCH [MILLIMETER]	OLD PART NO.	TOLERANCE EXCEPT AS NOTED	W.S. Darley & Co. ITASCA, IL - CHIPPEWA FALLS, WI
MATERIAL DESCRIPTION:	MATERIAL NO.	PATTERN NO.	DRY SMS	DATE 17-Apr-15	DWG - ZSD, NO PRIMER DIMENSIONAL
THIS DESIGN IS THE PROPERTY OF W.S. DARLEY AND CO. - UNAUTHORIZED REPRODUCTION IS PROHIBITED	ALL DIMENSIONS IN INCHES UNLESS NOTED	DO NOT SCALE PRINT	CHKD AAN TRCD	SCALE 1/4	

DZD0040