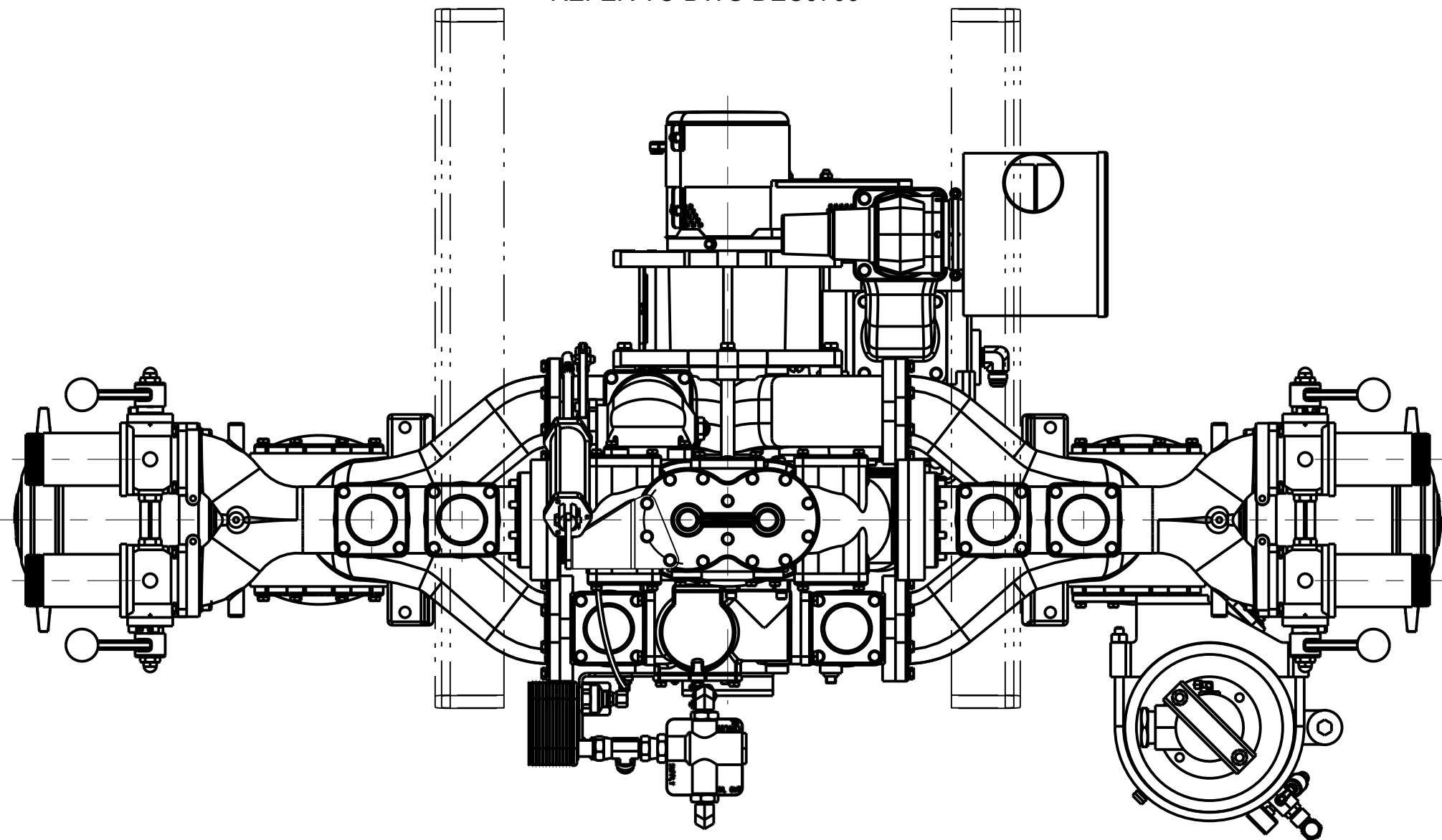
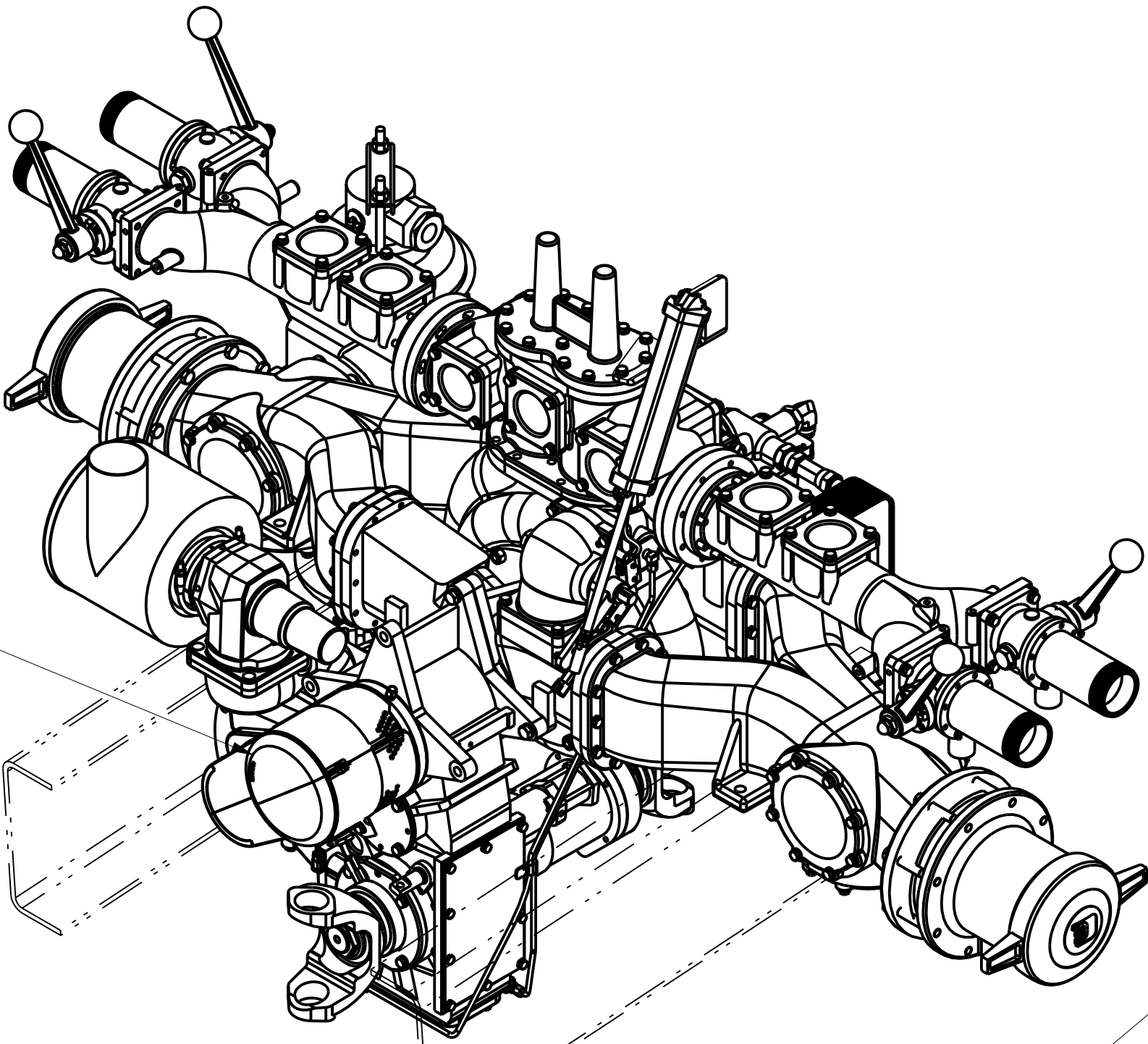


REVISIONS				
LTR	DESCRIPTION	DATE	CHG NO.	APPR'D
A	WAS DCM0503	24-JAN-13	10066	JAF

BELT DRIVE CLUTCH  
AND TRANSMISSION ASSEMBLY  
REFER TO DWG DEC0700



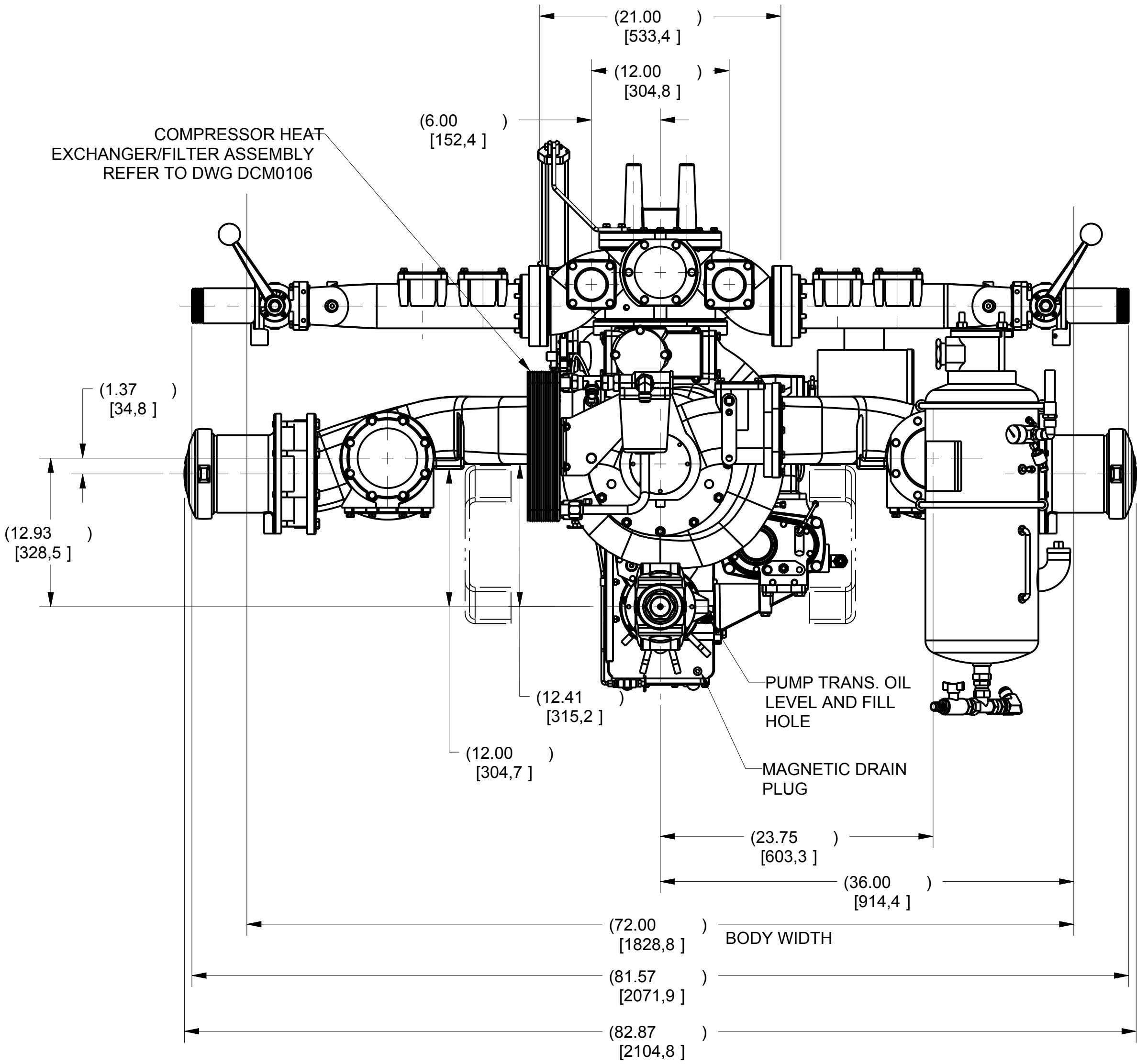
A BELT COVER/BRACKET  
REFER TO DWG DCM0509  
ALLOW 2.50" REAR CLEARANCE  
FOR BELT/CLUTCH MAINTENANCE



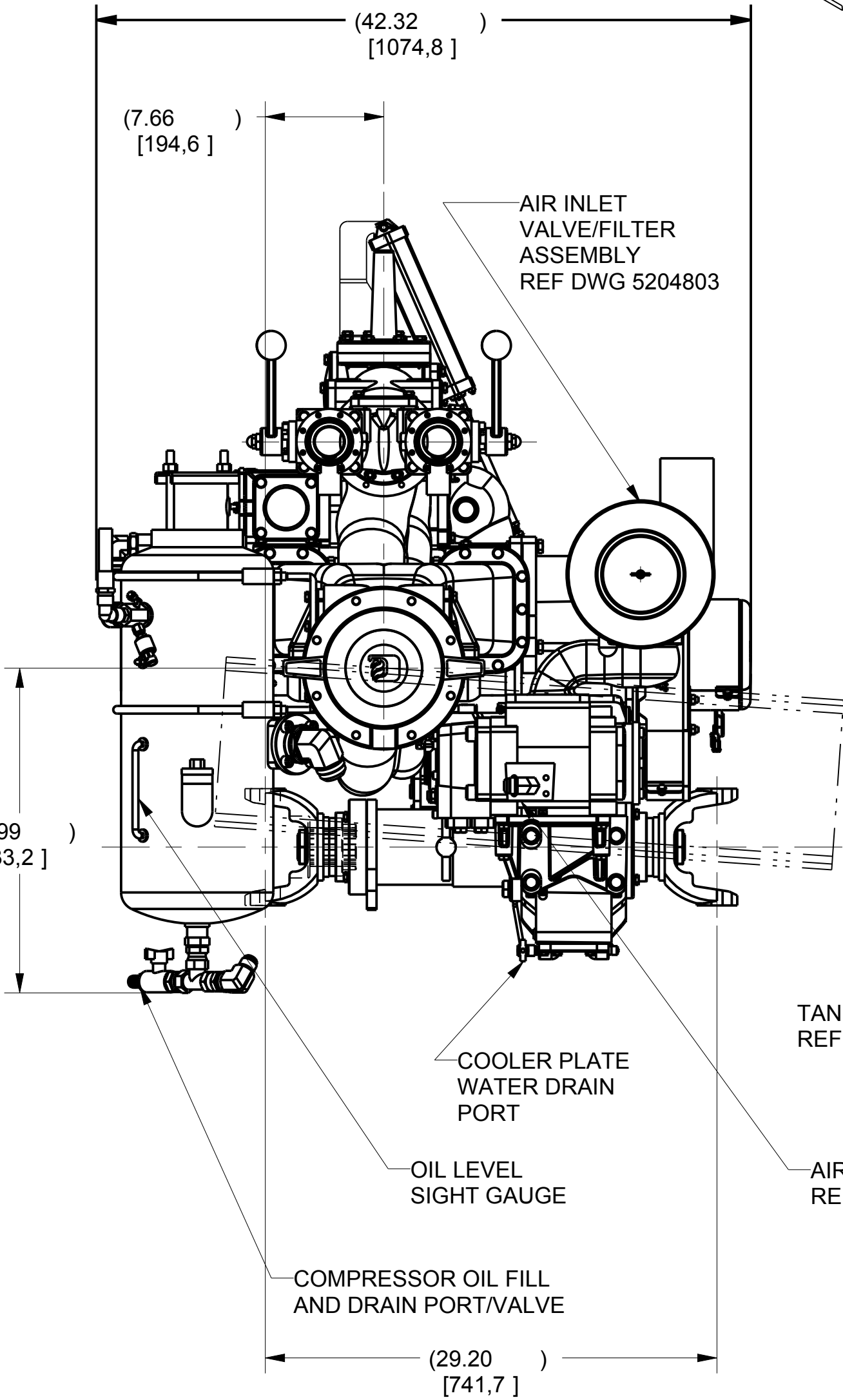
STANDARD EM PUMP REAR  
CONFIGURATION

AIR CYLINDER ASSEMBLY  
REFER TO DWG DGC0136

COMPRESSOR HEAT  
EXCHANGER/FILTER ASSEMBLY  
REFER TO DWG DCM0106



REAR VIEW



AIR/OIL RECEIVER  
TANK, PASSENGER SIDE  
REFER TO DWG DCM0804

COMPRESSOR MOUNTING BRACKET  
REFER TO DWG DCM0702

AIR END ASSEMBLY  
REFER TO DWG DCM0904

FRONT VIEW

APPROXIMATE WEIGHT = 2350 LBS (1068 KG)

REMOVE SHARP EDGES

INCH  
[MILLIMETER]

OLD PART NO.

TOLERANCE  
EXCEPT  
AS NOTED

W.S. Darley & Co.  
ITASCA, IL - CHIPPEWA FALLS, WI

MATERIAL DESCRIPTION:

MATERIAL NO.

PATTERN NO.

DRN R/J

DATE 11/10/08

DED0207

THIS DESIGN IS THE PROPERTY OF  
W.S. DARLEY AND CO. - UNAUTHORIZED  
REPRODUCTION IS PROHIBITED.

ALL DIMENSIONS IN  
INCHES UNLESS NOTED

DO NOT SCALE PRINT

CHKD DWS  
TRCD

SCALE 1/8