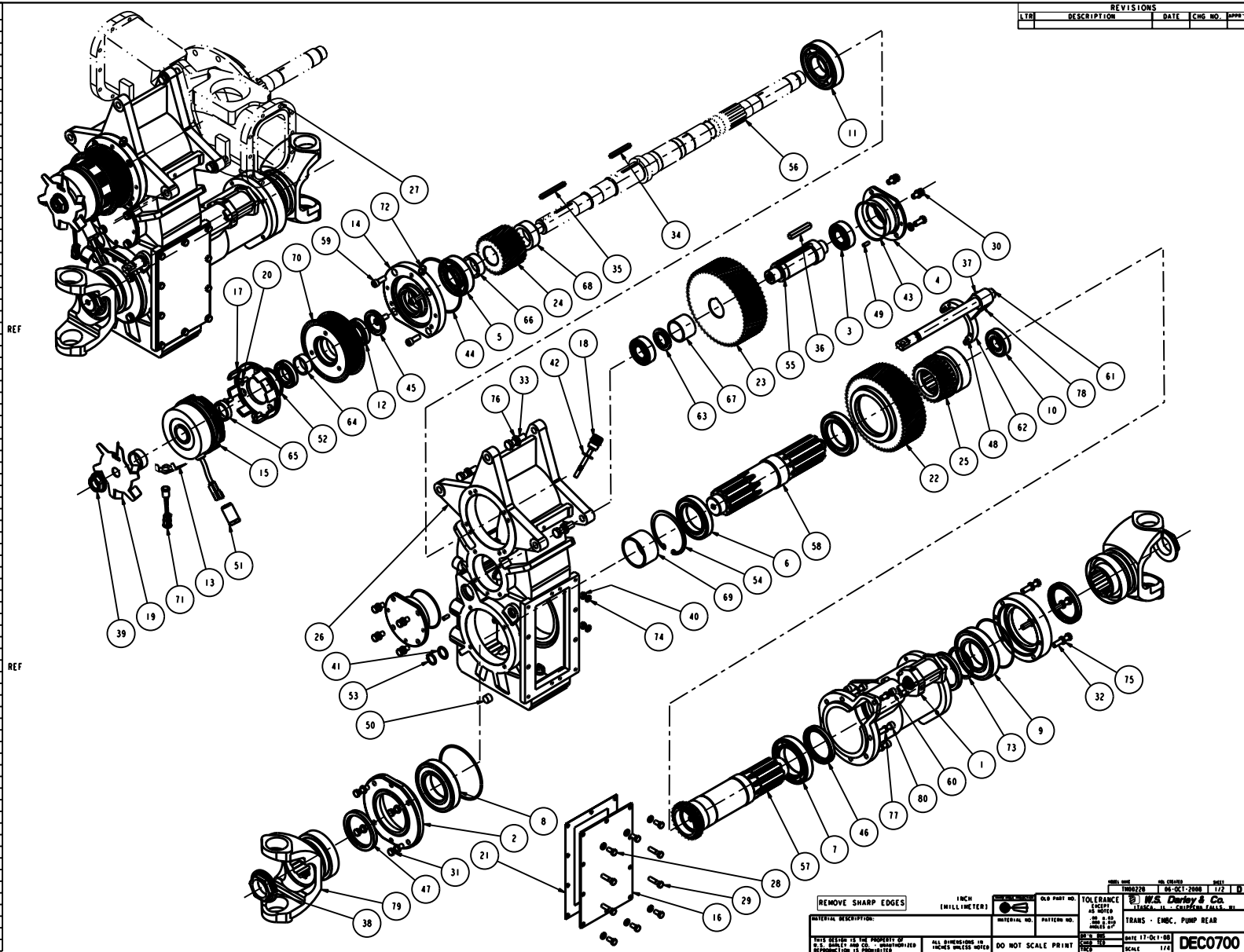


NO.	DESCRIPTION	PART NO.	QTY.
1	AIR CYLINDER - 1.75 BORE	AT00201	1
2	ASSY - NO BRAKE, EM, LHM	AB00400	1
3	BEARING - 22206 PE-3	1723600	2
4	BEARING CAP, IDLER	2303728	2
5	BEARING-BALL, 113KSF	1722003	1
6	BEARING-BALL, 113KSF	1723400	2
7	BEARING-BALL, 114KSF	1723502	1
8	BEARING-BALL, 213SF	1721401	1
9	BEARING-BALL, 213SFF	1721400	1
10	BEARING-BALL, 305SFF	1721700	1
11	BEARING-BALL, 310SF	1722101	1
12	BEARING-BALL, 6007.2MSR	1724300	2
13	BRACKET - THERMOSTAT	4029900	1
14	CAP - BEARING, LDMC ENDURO12	2300300	1
15	CLUTCH - 12 VDC W/HARNISS	4218411	1
16	COVER - GEARCASE, EMC, LDMC	2503300	1
17	CUP - DRIVE, ELECTRIC CLUTCH	4218501	1
18	DIPSTICK - M22x2.5 THR'D	4219000	1
19	FAN - EMC ELECTRIC CLUTCH	4433200	1
20	FMSCS - .313-18 X 0.75, GR8	5402837	3
21	GASKET - GEARCASE COVER, LDMH	3815301	1
22	GEAR - DRIVE, W, BDP, 20 DEG PA	2716106	1
23	GEAR - DRIVE/IDLER, BDP, 20 PA	2713305	1
24	GEAR - PINION, W, BDP, 20 PA	2712802	1
25	GEAR - SLIDING CLUTCH, W	2410800	1
26	GEARCASE - LDMH	1804200	1
27	HEAD - SUCTION	2301502	1
28	HMCS - .313-18 ± 0.63, GR5	5400017	6
29	HMCS - .313-18 ± 1.25, GR5	5400021	4
30	HMCS - .375-16 ± 0.88, GR5	5400035	8
31	HMCS - .375-16 ± 1.25, GR5	5400037	4
32	HMCS - .375-16 ± 1.75, GR5	5400039	4
33	HMCS - .500-13 ± 1.75, GR5	5400068	3
34	KEY - SO., 0.25 X 2.50 GR2	3602438	1
35	KEY - SO., 0.25 X 3.00 GR2	3602434	1
36	KEY - SO., 0.38 X 2.50	3602418	1
37	LOCK BOLT - SHIFT BAR	1184000	1
38	LOCKNUT	4814600	2
39	NUT - FLANGE, 7/8-14	4814501	1
40	NUT - HEX, 3/13-18, GR2	5403901	4
41	O-RING - 0.60 ± 0.12 ± 0.12	3601212	1
42	O-RING - 20MM ± 2.5MM ± 2.5MM	3601702	1
43	O-RING - 3.50 ± 3.69 X 0.09	3601124	2
44	O-RING - 5.00 ± 5.25 ± 0.12	3601227	1
45	OIL SEAL - 1.563 ID X 2.250 OD	3600546	1
46	OIL SEAL - 2.750 ID X 3.505 OD	3600511	2
47	OIL SEAL - 2.938 ID X 3.756 OD	3600543	2
48	PELLET - OIL WICK	4400900	6
49	PIN - DOWEL, .250 X 0.62, GR8	3605401	2
50	PLUG - PIPE, 0.375, MAG SOC HD	1080510	1
51	POST - CLUTCH ANTI-ROTATION	4428800	1
52	RING - CLUTCH CUP PILOT	2004400	1
53	RING - RETAINER, 5160-87	3600403	1
54	RING - RETAINER, H5000-393	3600438	1
55	SHAFT - IDLER GEAR, W	5009201	1
56	SHAFT - IMPELLER, EMC, MECH SEAL	5022000	1
57	SHAFT - TRANSMISSION	5009500	1
58	SHAFT - TRANSMISSION, EM, LDM	5009701	1
59	SHCS - .375-16 ± 1.00, GR8	5401023	4
60	SHCS - .375-16 ± 1.25, GR8	5401024	1
61	SHIFT BAR - PSM	1183900	1
62	SHIFT YOKE	1183700	1
63	SPACER - 1.19 ± 2.00 ± .25	3302204	1
64	SPACER - 1.38 ± 1.69 ± 0.62	3301705	2
65	SPACER - 1.38 ± 1.75 ± 0.41	3302008	1
66	SPACER - 1.57 ± 2.00 ± 0.71	3303400	1
67	SPACER - 1.75 ± 2.0 ± 1.43	3308702	1
68	SPACER - 1.75 ± 2.40 ± 0.86	3300700	1
69	SPACER - 2.56 ± 2.88 ± 1.58	3304704	1
70	SPROCKET - GATES POLY CHAIN	4819501	1
71	THERMOSTAT - W/CONNECTOR	4219503	1
72	VENT - AIR, STRAIGHT	4403400	1
73	WASHER - 2.56 ± 3.00 ± .09 STL	3603023	1
74	WASHER - LOCK, 0.313 ID	3603502	10
75	WASHER - LOCK, 0.375 ID	3603503	16
76	WASHER - LOCK, 0.500 ID	3603505	3
77	WASHER - LOCK, MC, 0.375 ID	3603512	8
78	WIRE - SAFETY	1102619	1
79	YOKE - PUMP, LOCK-ON, 1810	4813610	2
80	SHCS - .375-16 ± 1.50, GR8	5401025	7



REVISIONS			
LTB	DESCRIPTION	DATE	CHG NO. APPR

REMOVE SHARP EDGES

1 INCH (25.4 MILLIMETER)

DATE 17-01-08

SCALE 1:1

174

DECO700

W.S. Durley & Co. TRANSA, INC. CALIFORNIA, U.S.A.

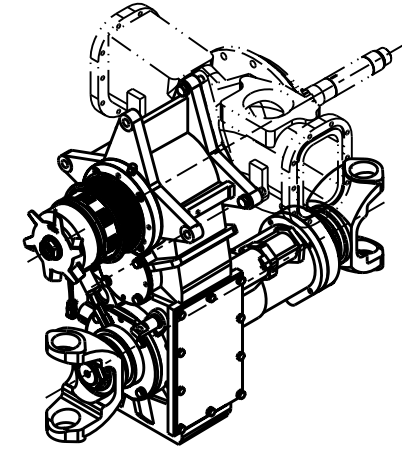
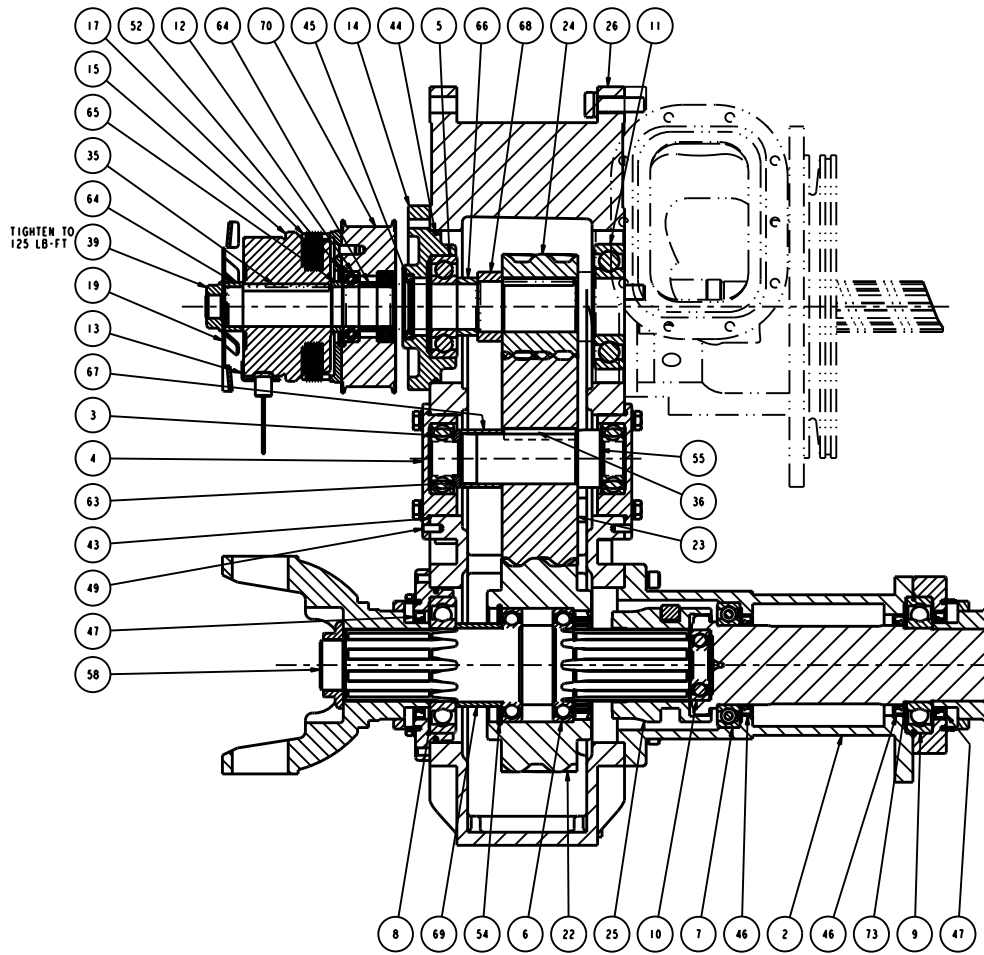
TRANS - EMC, PUMP REAR

DATE 17-01-08

SCALE 1:1

174

NO.	DESCRIPTION	PART NO.	QTY.
1	AIR CYLINDER - 1.75 BORE	A700201	1
2	ASSY - NO BRAKE, EM, LHM	AB00400	1
3	BEARING - 22206 PE-3	1723600	2
4	BEARING CAP, IDLER	2303728	2
5	BEARING-BALL, 113KSF	1722003	1
6	BEARING-BALL, 113KSF	1723400	2
7	BEARING-BALL, 114KSF	1723502	1
8	BEARING-BALL, 213SF	1721401	1
9	BEARING-BALL, 213SFF	1721400	1
10	BEARING-BALL, 305SFF	1721700	1
11	BEARING-BALL, 310SF	1722101	1
12	BEARING-BALL, 6007.ZMSR	1724300	2
13	BRACKET - THERMOSTAT	4029900	1
14	CAP - BEARING, LDMC ENDURO12	2300300	1
15	CLUTCH - 12 VDC W/HARNES	4218411	1
16	COVER - GEARCASE, EMC, LDMC	2503300	1
17	CUP - DRIVE, ELECTRIC CLUTCH	4218501	1
18	DIPSTICK - M22x2.5 THR'D	4219000	1
19	FAN - EMC ELECTRIC CLUTCH	4433200	1
20	FHSCS - .313-18 X 0.75, GR8	5402837	3
21	GASKET - GEARCASE COVER, LDMH	3815301	1
22	GEAR - DRIVE, W, BDP, 20 DEG PA	2716106	1
23	GEAR - DRIVE/IDLER, BDP, 20 PA	2713305	1
24	GEAR - PINION, W, BDP, 20 PA	2712802	1
25	GEAR - SLIDING CLUTCH, W	2410800	1
26	GEARCASE - LDMH	1804200	1
27	HEAD - SUCTION	2301502	1
28	HMSC - .313-18 ± 0.63, GR5	5400017	6
29	HMSC - .313-18 ± 1.25, GR5	5400021	4
30	HMSC - .375-16 ± 0.88, GR5	5400035	8
31	HMSC - .375-16 ± 1.25, GR5	5400037	4
32	HMSC - .375-16 ± 1.75, GR5	5400039	4
33	HMSC - .500-13 ± 1.75, GR5	5400068	3
34	KEY - SO., 0.25 X 2.50 GR2	3602438	1
35	KEY - SO., 0.25 X 3.00 GR2	3602434	1
36	KEY - SO., 0.38 X 2.50	3602418	1
37	LOCK BOLT - SHIFT BAR	1184000	1
38	LOCKNUT	4814600	2
39	NUT - FLANGE, 7/8-14	4814501	1
40	NUT - HEX., .313-18, GR2	5403901	4
41	O-RING - 0.88 ± 1.12 ± 0.12	3601212	1
42	O-RING - 20MM ± 25MM ± 2.5MM	3601702	1
43	O-RING - 3.50 ± 3.69 ± 0.09	3601124	2
44	O-RING - 5.00 ± 5.25 ± 0.12	3601227	1
45	OIL SEAL - 1.563 ID X 2.250 OD	3600546	1
46	OIL SEAL - 2.750 ID X 3.505 OD	3600511	2
47	OIL SEAL - 2.938 ID X 3.756 OD	3600543	2
48	PELLET - OIL WICK	4400900	6
49	PIN - DOBEL, .250 X 0.62, GR8	3605401	2
50	PLUG - PIPE, 0.375, MAG SOC HD	1080510	1
51	POST - CLUTCH ANTI-ROTATION	4428800	1
52	RING - CLUTCH CUP PILOT	2004400	1
53	RING - RETAINER, 5160-87	3600403	1
54	RING - RETAINER, #5000-393	3300438	1
55	SHAFT - IDLER GEAR, W	5009201	1
56	SHAFT - IMPELLER, EMC, MECN SEAL	5022000	1
57	SHAFT - TRANSMISSION	5009500	1
58	SHAFT - TRANSMISSION, EM, LDM	5009701	1
59	SHCS - .375-16 ± 1.00, GR8	5401023	4
60	SHCS - .375-16 ± 1.25, GR8	5401024	1
61	SHIFT BAR - PSN	1183900	1
62	SHIFT YOKE	1183700	1
63	SPACER - 1.19 ± 2.00 ± .25	3302204	1
64	SPACER - 1.38 ± 1.69 ± 0.62	3301705	2
65	SPACER - 1.38 ± 1.75 ± 0.411	3302008	1
66	SPACER - 1.57 ± 2.00 ± 0.71	3303400	1
67	SPACER - 1.75 ± 2.0 ± 1.43	3308702	1
68	SPACER - 1.75 ± 2.40 ± 0.86	3300700	1
69	SPACER - 2.56 ± 2.88 ± 1.58	3304704	1
70	SPROCKET - GATES POLY CHAIN	4819501	1
71	THERMOSTAT - W/CONNECTOR	4219503	1
72	VENT - AIR, STRAIGHT	4403400	1
73	WASHER - 2.56 ± 3.00 ± .09 STL	3603023	1
74	WASHER - LOCK, 0.313 ID	3603502	10
75	WASHER - LOCK, 0.375 ID	3603503	16
76	WASHER - LOCK, 0.500 ID	3603505	3
77	WASHER - LOCK, MC, 0.375 ID	3603512	8
78	WIRE - SAFETY	1102619	1
79	YOKE - PUMP, LOCK-ON, 1810	4813610	2
80	SHCS - .375-16 ± 1.50, GR8	5401025	7



REVISIONS			
LTB	DESCRIPTION	DATE	CHG NO. APPR

REMOVE SHARP EDGES

1 INCH (25.4 MILLIMETER)

TOLERANCE LIMITS

DATE 17-01-08

SCALE 1/2

DECO700

TRANS - EMC, PUMP REAR

W.S. Durley & Co. STAMPA, IL - CAIRO, ILL. U.S.A.