

## **REV PAGE:**

- REV 0, GDY, ORIGINAL RELEASE 12/21/2015
- REV A, SLS, UPDATED SUCTION OPTIONS ECO 12049
- REV B, PWS, ADD SUCTION OPTIONS: 1207009 ECO 12511
- REV C, PWS, NEW MAN. OVER. SHIFT ASSY/DOCS ECO 12881
- REV D, JRA, REMOVED PACKING OPTIONS FROM SEAL TYPE ECO 13002 8/10/22
- REV E, JRA, ADDED PSMC AND PSMH TO THE MODEL LIST AND OPTIONS, REFORMATTED DOCUMENT TO REFLECT CHANGES, GRAMMATICAL CHANGES, ECO 13045 10/28/2022
- REV F, SMS, ADDED 2000 GPM RATING, 13079 12/27/2022

# W.S. Darley & Co.

TRUSTED WORLDWIDE SINCE 1908



## Pump Plant & Engineering

1051 Palmer Street  
Chippewa Falls, WI 54729  
Phone 800-634-7812  
Fax 715-726-2656

## Pump Sales & Corporate

325 Spring Lake Dr.  
Itasca, IL 60143-2072  
Phone (708) 345-8050  
Fax (708) 345-8993

Date: \_\_\_\_\_

Bill To: \_\_\_\_\_

P.O. No.: \_\_\_\_\_

Customer No.: \_\_\_\_\_

Order Completed By: \_\_\_\_\_

Desired Delivery Date: \_\_\_\_\_

End Customer: \_\_\_\_\_

Customer Contact:

Tel No.: \_\_\_\_\_

Fax No.: \_\_\_\_\_

Email: \_\_\_\_\_

\_\_\_\_\_

\_\_\_\_\_

\_\_\_\_\_

Ship To: \_\_\_\_\_

\_\_\_\_\_

\_\_\_\_\_

\_\_\_\_\_

# PUMP ORDER FORM

## PSM, PSMC, PSMH PUMP

Please review the order form before starting. If any challenges arise, please call our Customer Service Department at (800) 634-7812 for assistance. We will be glad to help. Please fill in the information completely.

**Pump Model:** (Circle One)

**PSM                  PSMC                  PSMH**

**Rated capacity:** (Choose Either GPM or LPM)

GPM:  1000     1250     1500     1750     2000

LPM:  4000     5000     6000

\*If special testing is required, please indicate your need.

Imperial Gallons (List Capacity) \_\_\_\_\_

Liters per Minute (List Capacity) \_\_\_\_\_

Other (Specify) \_\_\_\_\_

### CHASSIS INFORMATION

Chassis make: \_\_\_\_\_ Transmission Make: \_\_\_\_\_

Model: \_\_\_\_\_ Model: \_\_\_\_\_

Engine: \_\_\_\_\_ Color: \_\_\_\_\_

HP: \_\_\_\_\_ Altitude: \_\_\_\_\_ FT.

@ \_\_\_\_\_ RPM                  Wheelbase: \_\_\_\_\_

Electrical system:  12V  24V Cab to Axle: \_\_\_\_\_

Air Brakes:  Yes  No                  Body Width:  70"  72"

Pump Gear Ratio: \_\_\_\_\_

Control Location:  Side Panel     Top Console

Lowest Gear/Torque Converter Ratio: \_\_\_\_\_

## PUMP DRIVE SHAFT INFORMATION

1. Measure distance across lugs of universal joint yoke to determine Spicer yoke series.
2. Check box of appropriate size below.
3. Spicer Lock-on yoke supplied on front and rear of pump.

**NOTE:** If chassis driveline is not one of Spicer yokes listed, contact Darley Engineering.

<u>Distance across lugs</u>	<u>Spicer Yoke Series</u>
<input type="checkbox"/> 4.97	1550
<input type="checkbox"/> 5.31	1610
<input type="checkbox"/> 6.09	1710 (standard)
<input type="checkbox"/> 7.00	1760
<input type="checkbox"/> 7.55	1810

## PUMP RATING

- NFPA 1901 Fire Pump  
 Other: \_\_\_\_\_

## (Options, Fill in choices)

- Primary water type:**     Salt water                       Fresh water
- Pump material:**             Cast Iron                       Bronze (Recommended for salt water)
- Pump position:**             Rear                               Front  
(3 Gear only)
- Seal type:**                     Mechanical Seal
- Electric Primer:**             12V                               24V                               None
- Primer type:**                 Fluid                               Fluid-less
- Mounting Kit:**                 Standard
- Suction Tee:**  
 6" Sweep                       6" Victaulic                       5" Victaulic  
 5" Weld                         5" Weld Bronze                       6" No Sweep  
 45° Extension

**Inline Butterfly Valve:**

Hand wheel Operated    **OR**     Electric Actuated

Manual Vented    **OR**     Automatically Vented

**Inline Valve Size:**

4"                       5"                       6"

**Inline Valve Piping Size:**

NPT                       Weld                       NST

**Suction Caps:**     5"                       6"

**Suction Adapter:**

6" Suction Tee

6" NPT Suction Flange:     NPT                       Weld                       NST

**Discharge Valves: (shipped loose)**

2-1/2" NH Straight Nipple     2-1/2" NH 30° Down Nipple

**Suction Valves:** (shipped loose)

2-1/2" NH Female     2-1/2" NH Female "Full Flow"

**Inline Tank to Pump Check Valve:**  3" or  4"

**3/4" Valve Drains** (available on suction or discharge valves)

**Pressure Relief Valve with Remote Control and Pilot Light** (Shipped loose)

**Auto-Governor**

**Suction Relief Valve with Remote Control** (Shipped loose)

**Tachometer Cable (cable only)**

**Hand Speed Counter and Cable**

**Electric Tachometer, Speed Counter and Cable**

**Master Drain Valve (8 openings)**

**Isolated Ports Multiple Drain (6 openings)**

**Pump Overheat Protection System**

**Complete suction and discharge manifolding w/ valves**

**Air Power Shift**

**Manual Override Shift** (AH00119- 130" CBL w/ Handle or AH00120- 70" CBL no Handle)

**High Pressure Second Stage Pump**

**CAFS Compressor Package**

**-PAGE INTENTIONALLY LEFT BLANK-**

Prepared by: GDY 12/21/2015  
Revised by: JRA  
Approved by: LJV, SJL

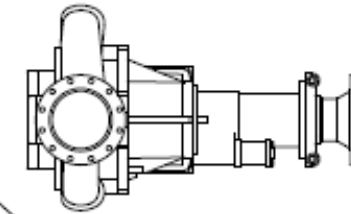
1207009

7

Rev: F  
Drawn Date: 12/21/2015  
Rev Date: 12/27/2022



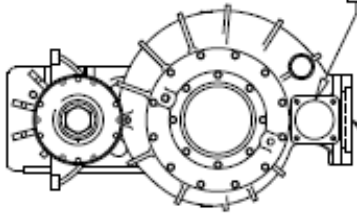
### WSP Technology Co. PSM PUMP ORDER FORM



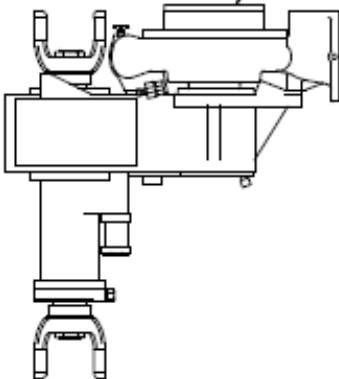
- DISCHARGE FLANGE**
- 4" NPT
  - 4" WELD
  - 5" NPT
  - 5" WELD

**FLANGE SIZE**

BL	1.5	2	2.5	3
----	-----	---	-----	---



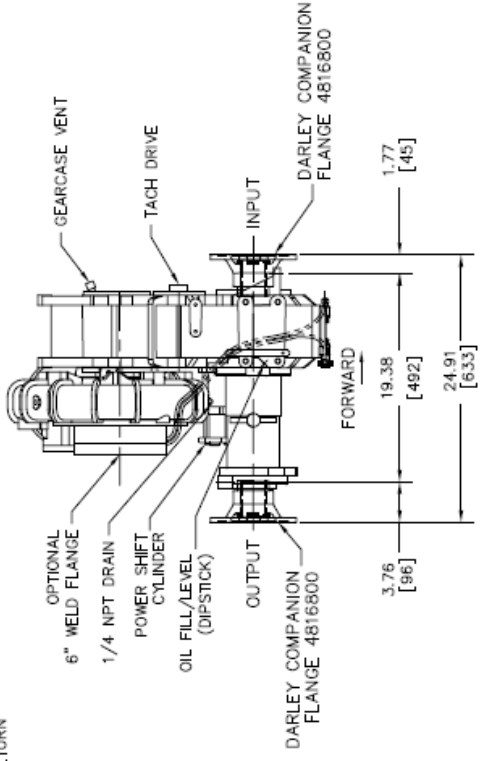
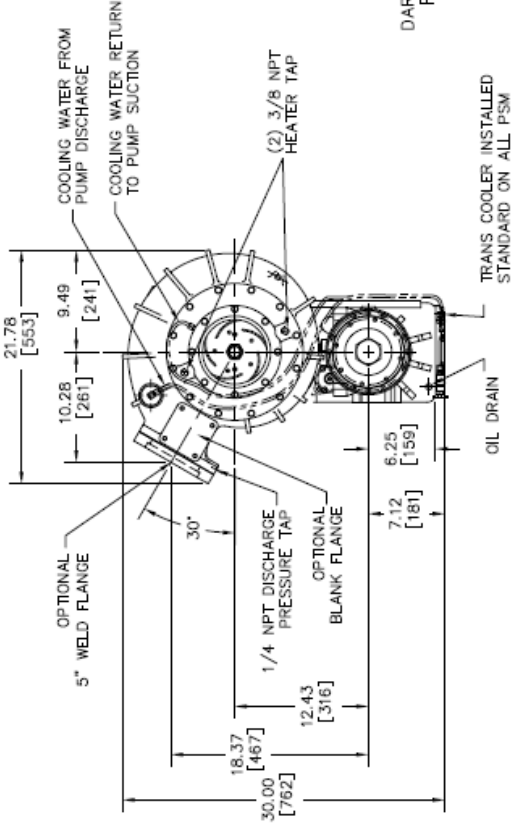
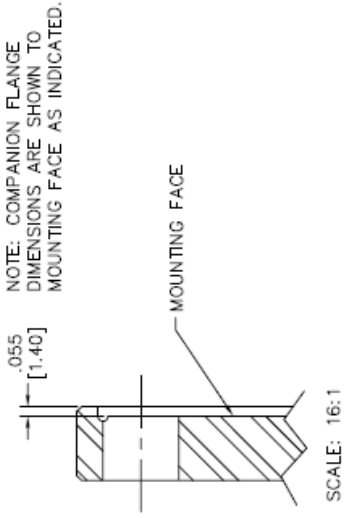
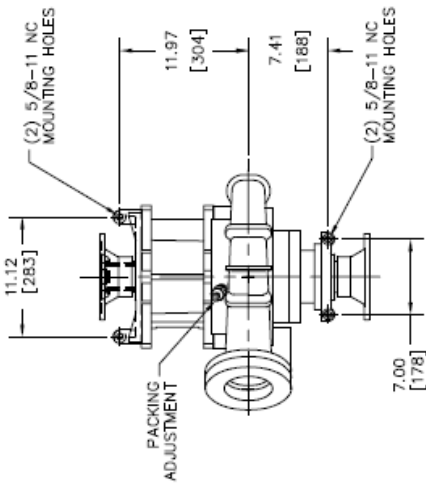
- FLANGE SIZE**
- 6" NPT
  - 6" WELD
  - 6" WICKAULT
  - 6" SWEET SUCTON TEE WICKAULT  
3100000
  - 6" SUCTON EXTENSION  
(USE WITH 6" SWEET SUCTON TEE  
FOR ADDITIONAL DRIVLINE DROP)
  - 6" STRAIGHT SUCTON TEE WICKAULT  
3100000



1207009  
REV. 4  
DEC 2008  
LN  
Rev Date: 04/18  
SLS



REVISIONS			
LT#	DESCRIPTION	DATE	CHG. NO.
A	ADDED 1/4 NPT DRAIN FITTING	01AUG06	2006-267



REMOVE SHARP EDGES		TOLERANCE EXCEPT AS NOTED	
MATERIAL DESCRIPTION		TOLERANCE EXCEPT AS NOTED	
MATERIAL NO.		TOLERANCE EXCEPT AS NOTED	
OLD PART NO.		TOLERANCE EXCEPT AS NOTED	
PATTERN NO.		TOLERANCE EXCEPT AS NOTED	
DATE 2/25/2014		TOLERANCE EXCEPT AS NOTED	
SCALE 1/8		TOLERANCE EXCEPT AS NOTED	
DO NOT SCALE PRINT		TOLERANCE EXCEPT AS NOTED	
ALL DIMENSIONS IN THIS DRAWING ARE UNLESS NOTED OTHERWISE		TOLERANCE EXCEPT AS NOTED	
REPRODUCTION IS PROHIBITED		TOLERANCE EXCEPT AS NOTED	

NOTE:  
 -APPROX. WEIGHT: 475LBS [215 KG]  
 -COMPANION FLANGES FIT 1710/1760/1810

Prepared by: GDY 12/21/2015  
 Revised by: JRA  
 Approved by: LJN, SJL

1207009  
 9

Rev: F  
 Drawn Date: 12/21/2015  
 Rev Date: 12/27/2022

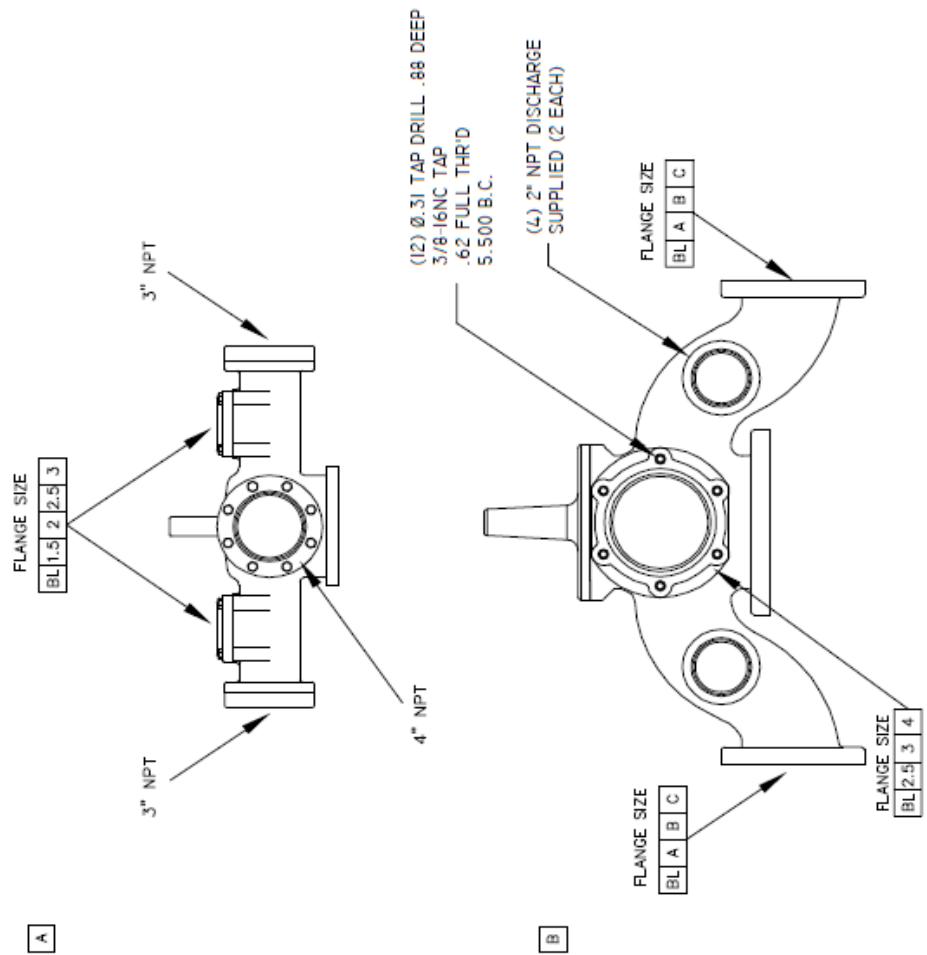
# W.S. Darley & Co.

## DISCHARGE HEAD OPTIONS

CHECK BOX FOR APPROPRIATE CHOICE OF EACH:

1. DISCHARGE HEAD LETTER.
2. DISCHARGE FLANGE SIZE.
3. DISCHARGE EXTENSION LETTER.

### DISCHARGE HEADS



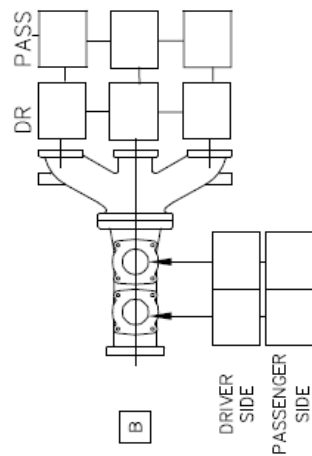
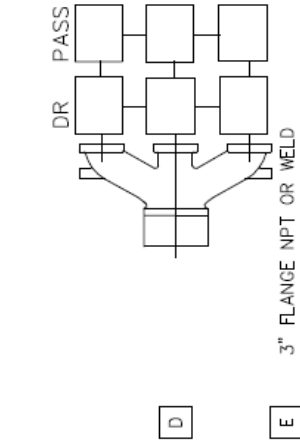
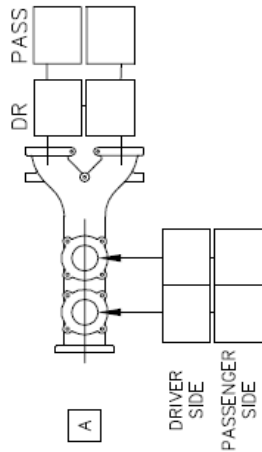
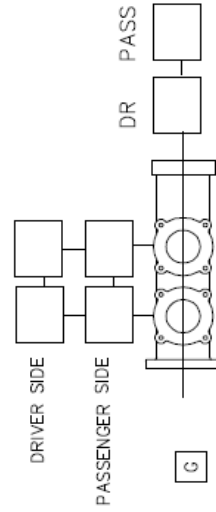
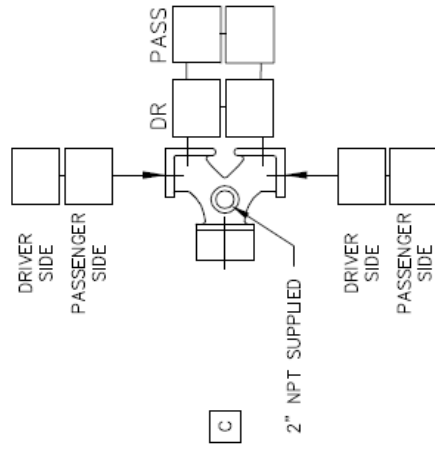
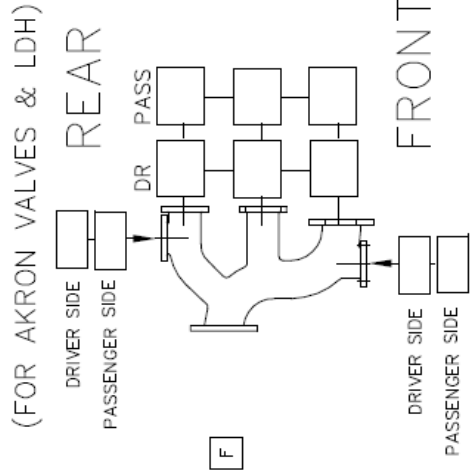
1202017  
 REV. 5  
 09/26/08  
 REV DATE: 09/26/08  
 REV BY: RJG

# W.B. Darley & Co.

## PSM PUMP ORDER FORM

### DISCHARGE EXTENSIONS

INDICATE REQUIRED COMPANION FLANGE SIZE IN BOX CORRESPONDING TO DISCHARGE EXTENSION SELECTED. AVAILABLE FLANGE SIZES: 1 1/2", 2", 2 1/2", 3".



SHEET 4 OF 4

1202002  
13JUN2005  
REV 6  
REV DATE: 08/2010 JJP

# Crating options/Instructions

- Standard Box
- Wood Crate, Bark Free
- Heat Treated Skid (Export)
- Oversized Domestic Skid and Box (38x44)
- Oversized Export Skid and Box (38x44)
- Oversized Heat Treated Skid (Export 38x44)
- Special Crating Instructions: \_\_\_\_\_  
\_\_\_\_\_  
\_\_\_\_\_  
\_\_\_\_\_  
\_\_\_\_\_

