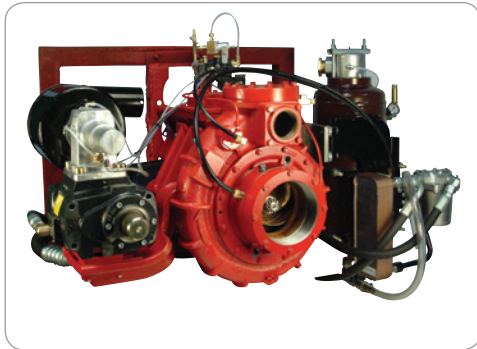
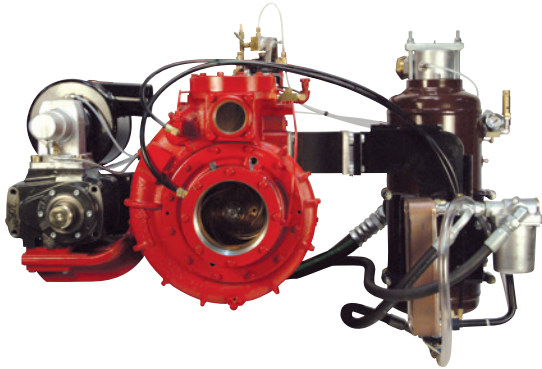


PSPBC 1000, 1250, 1500

SINGLE STAGE, CENTRIFUGAL, PTO DRIVEN



DIMENSIONS & WEIGHT

- 29"L x 43"W x 32"H, 834 lbs. (378 kg)

APPLICATIONS

- Aerial
- Pumper
- Wildland/Urban Interface
- Rescue Pumper

STANDARD FEATURES

- 5" NPT discharge flange
- 6" NPT or weld suction flange
- PS pump assembly
- Mechanical seal
- Electric clutch for 220 cfm compressor package
- Rotation: Engine
- Belt driven compressor package
- 1310/1410 drive flange

OPTIONS

- 3" tank to pump valve assembly with 4" front tank connection
- 3" LDH discharge
- Manual intake butterfly
- Electric intake butterfly
- FoamPro 2001 Foam System

PERFORMANCE

PSPBC 1000

1000 gpm (3785 L/M) @ 150 psi (10.3 bar)
700 gpm (2646 L/M) @ 200 psi (13.8 bar)
500 gpm (1893 L/M) @ 250 psi (17.2 bar)

PSPBC 1500

1500 gpm (5678 L/M) @ 150 psi (10.3 bar)
1050 gpm (3974 L/M) @ 200 psi (13.8 bar)
750 gpm (2839 L/M) @ 250 psi (17.2 bar)

PSPBC 1250

1250 gpm (4731 L/M) @ 150 psi (10.3 bar)
875 gpm (3312 L/M) @ 200 psi (13.8 bar)
625 gpm (2365 L/M) @ 250 psi (17.2 bar)

