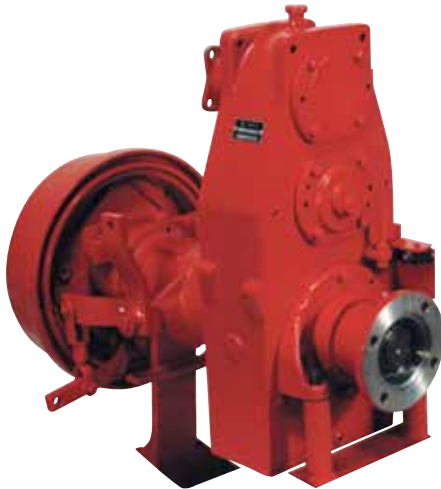


KDM-HD-PTO

300 HP SPLIT SHAFT PTO, TORQUE RATING UP TO 19,300 FT. LBS.



DIMENSIONS & WEIGHT

- 28"L x 9"W x 22"H, 225 lbs. (102 kg)

APPLICATIONS

- Drives rear mounted pumps
- Driveline for foam, generator, and hydraulic systems
- Pumper

STANDARD FEATURES

- 2½" shaft
- Complete mounting kit and lock-on universal joint for front and rear shafts
- Air shift
- 1410 companion flange on output shaft
- Opposite engine rotation - gear ratio: 0.93 to 1 thru 1.20 to 1
- Engine rotation - gear ratio: 1:62 to 1 thru 3.19 to 1

OPTIONS

- Electric shift, hydraulic drive flange, parking brake

