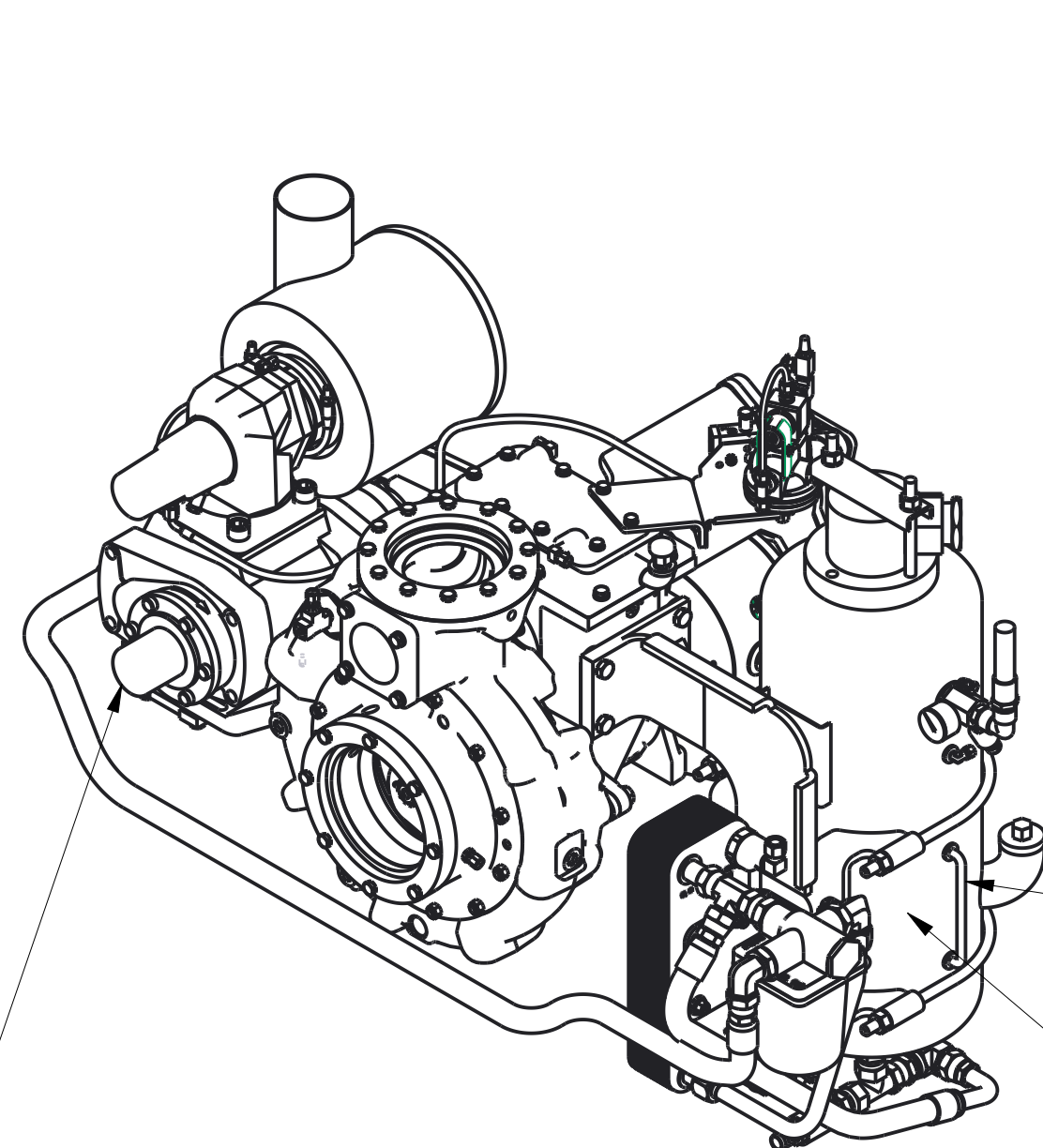
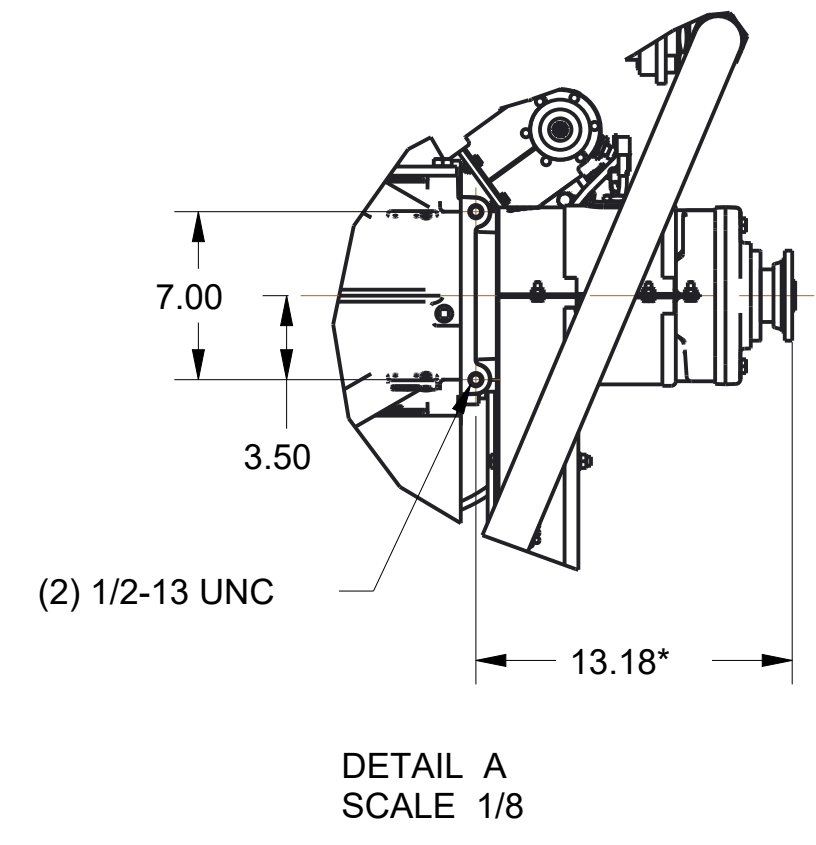


REVISIONS				
LTR	DESCRIPTION	DATE	CHG NO.	APPRD



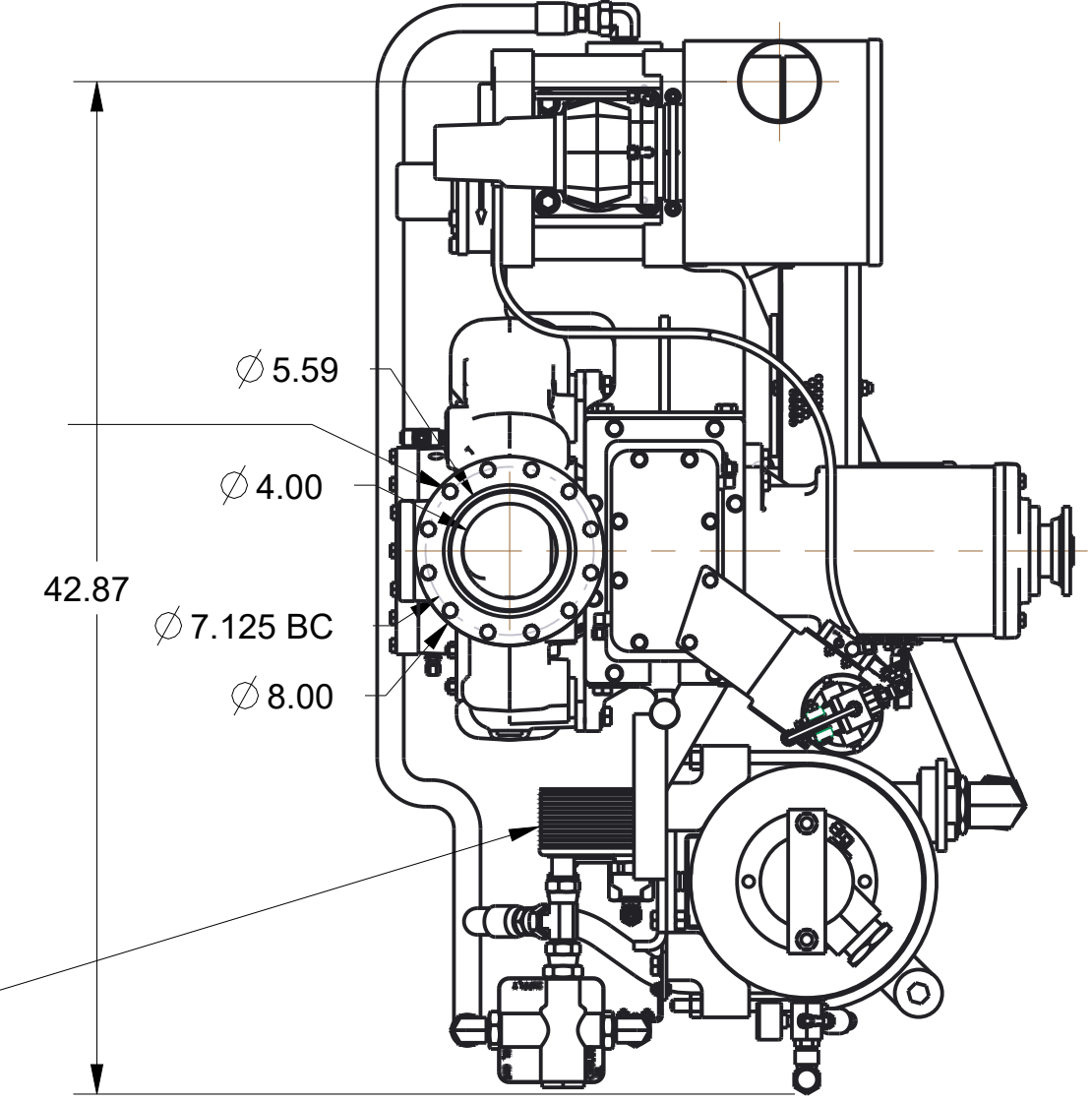
AIR END ASSEMBLY
REF DWG DCM0901

COMPRESSOR OIL LEVEL SIGHT GAGE
OIL SEPARATOR TANK
REF DWG DCM0805

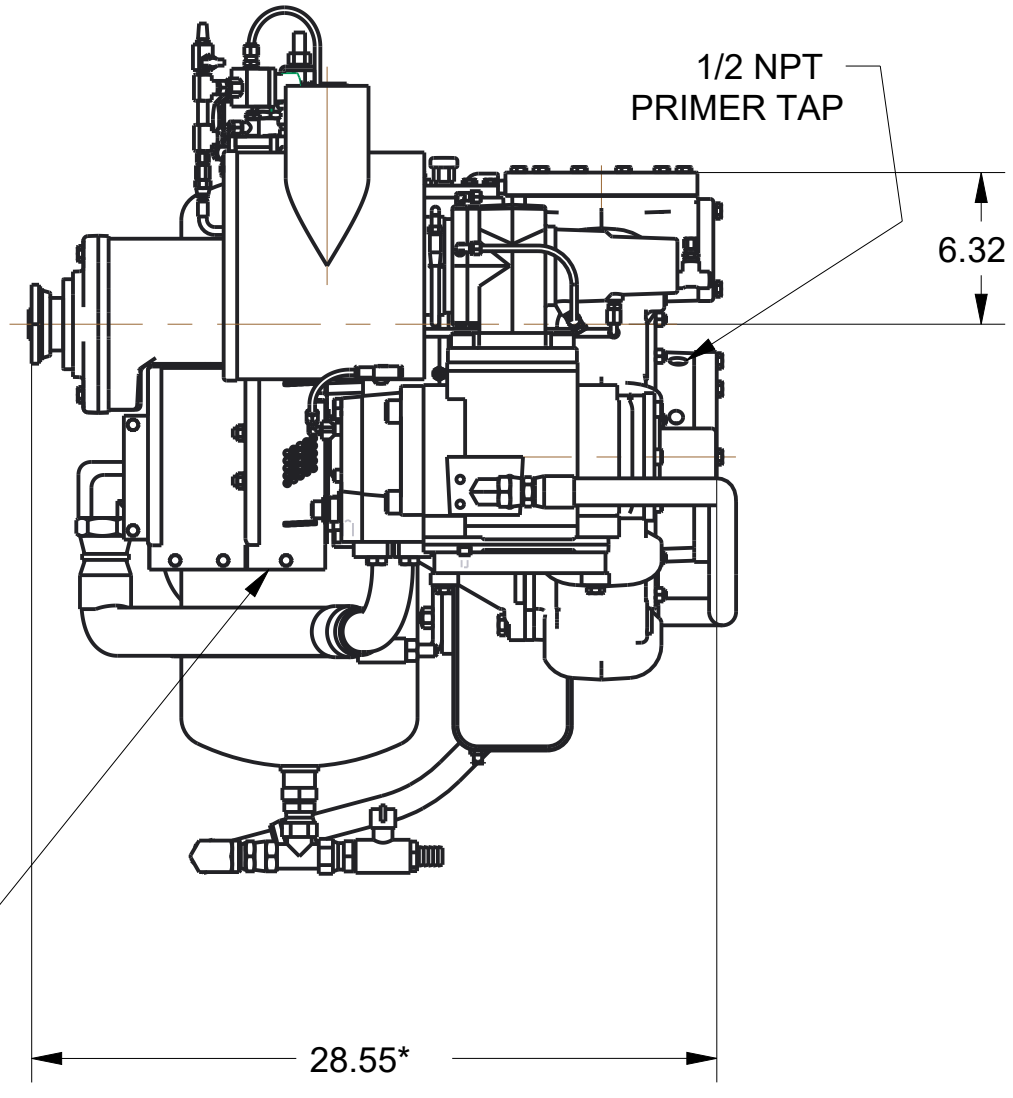


DETAIL A
SCALE 1/8

12X 3/8-16 UNC-2B BY .50

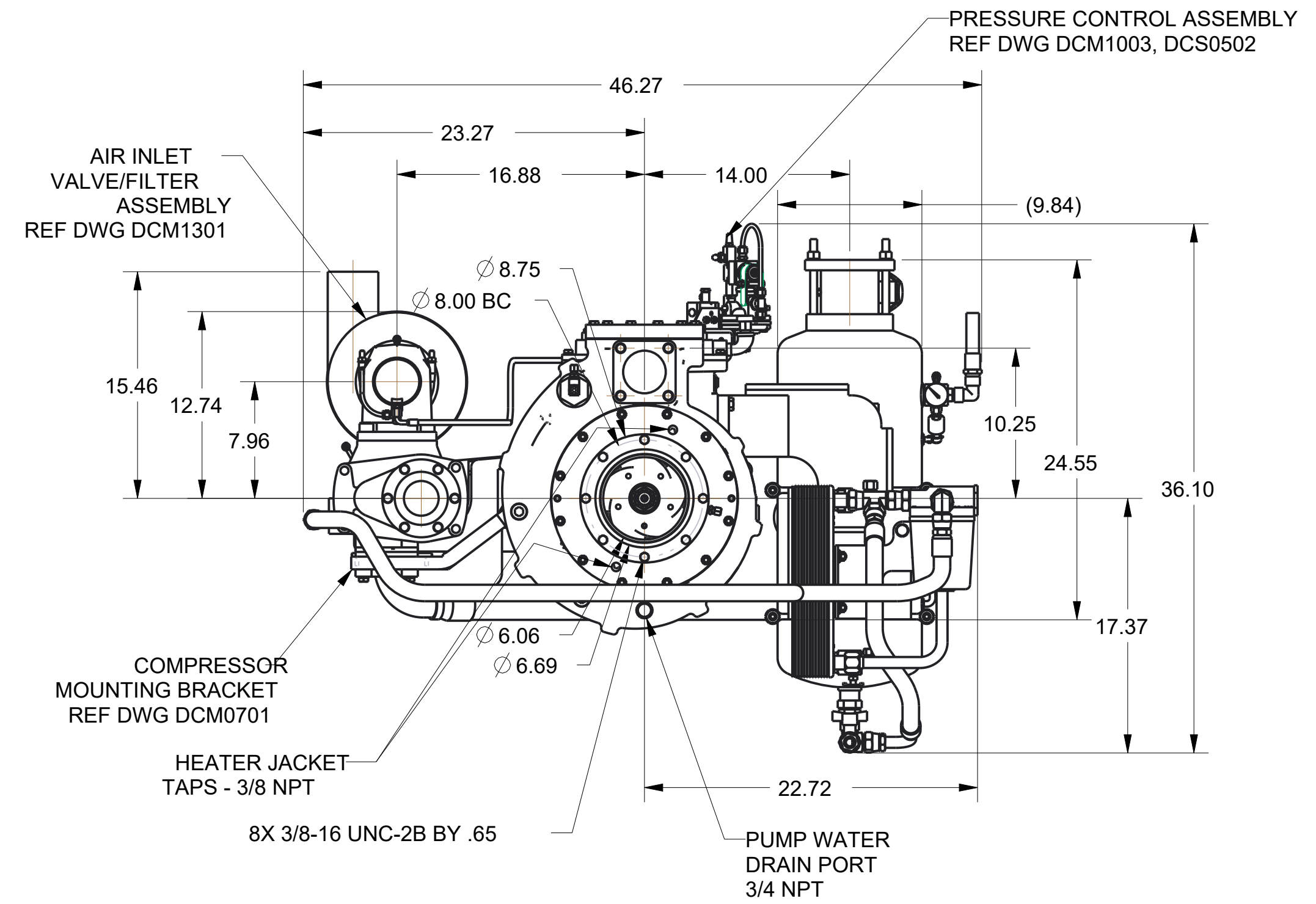


COMPRESSOR HEAT EXCHANGE/FILTER ASSEMBLY
REF DWG DCM0115



BELT DRIVE CLUTCH AND TRANSMISSION ASSEMBLY
REF DWG DPC1000
BELT COVER/BRACKET
REF DWG DCM0502

1/2 NPT PRIMER TAP



AIR INLET VALVE/FILTER ASSEMBLY
REF DWG DCM1301

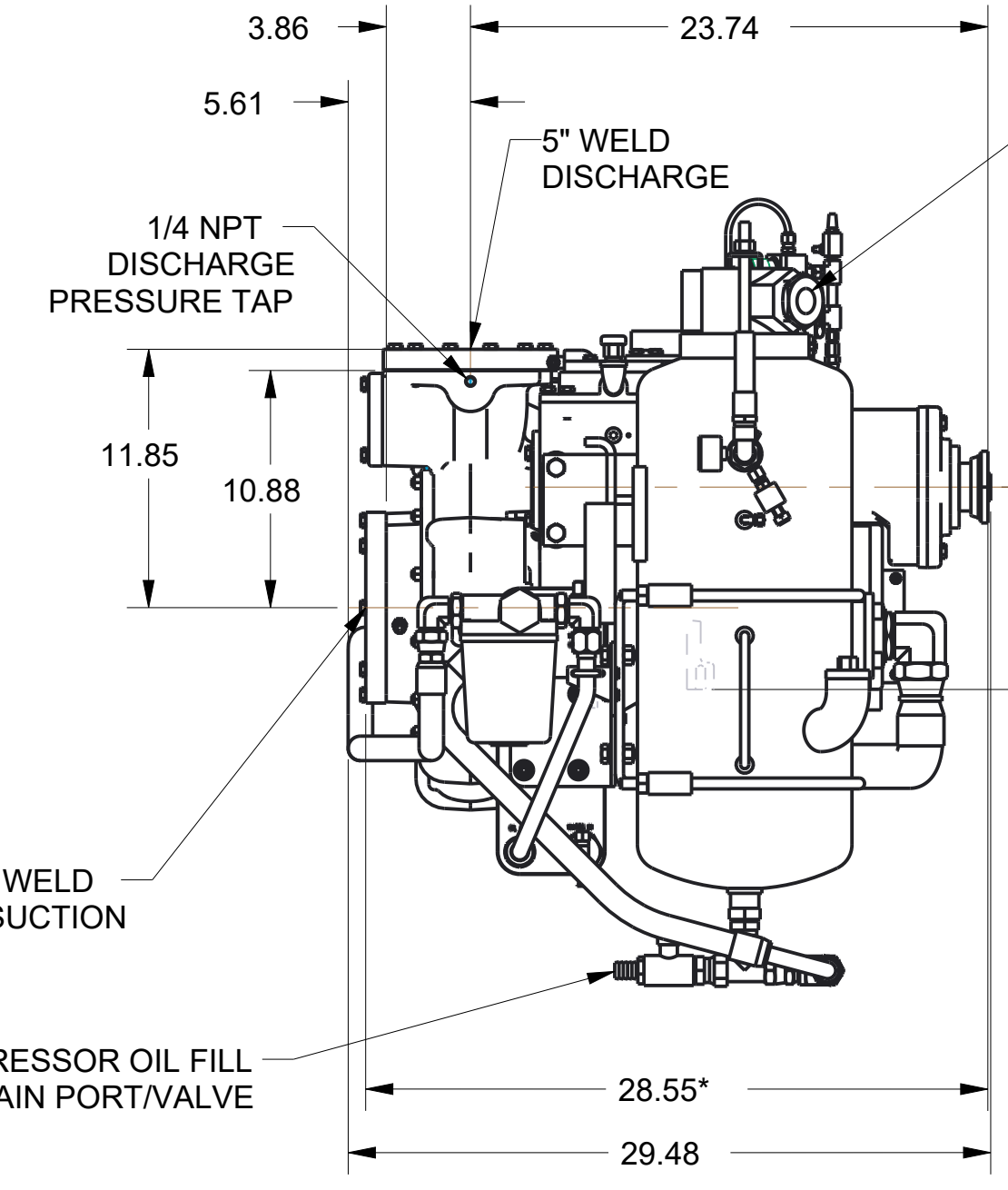
PRESSURE CONTROL ASSEMBLY
REF DWG DCM1003, DCS0502

COMPRESSOR MOUNTING BRACKET
REF DWG DCM0701

HEATER JACKET TAPS - 3/8 NPT

8X 3/8-16 UNC-2B BY .65

PUMP WATER DRAIN PORT
3/4 NPT



6" WELD SUCTION

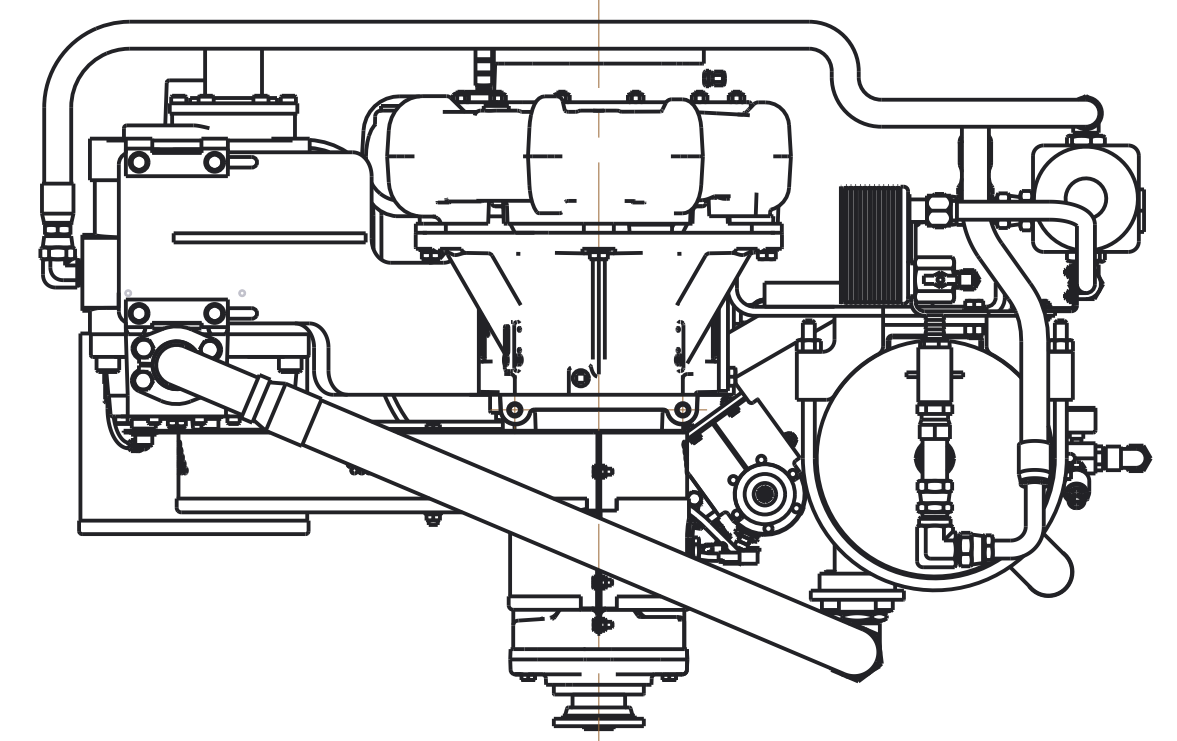
COMPRESSOR OIL FILL AND DRAIN PORT/VALVE

1/4 NPT DISCHARGE PRESSURE TAP

5" WELD DISCHARGE

COMPRESSED AIR DISCHARGE
1" NPT

9.28 TO BOTTOM OF SUPPORTS ON IMPELLER SHAFT BEARING CAP



REMOVE SHARP EDGES

INCH (MILLIMETER)

OLD PART NO.
TOLERANCE EXCEPT AS NOTED
DWG - PSPBC
DIMENSIONAL

DATE 26SEP2007
SCALE 1/8
DPD1201

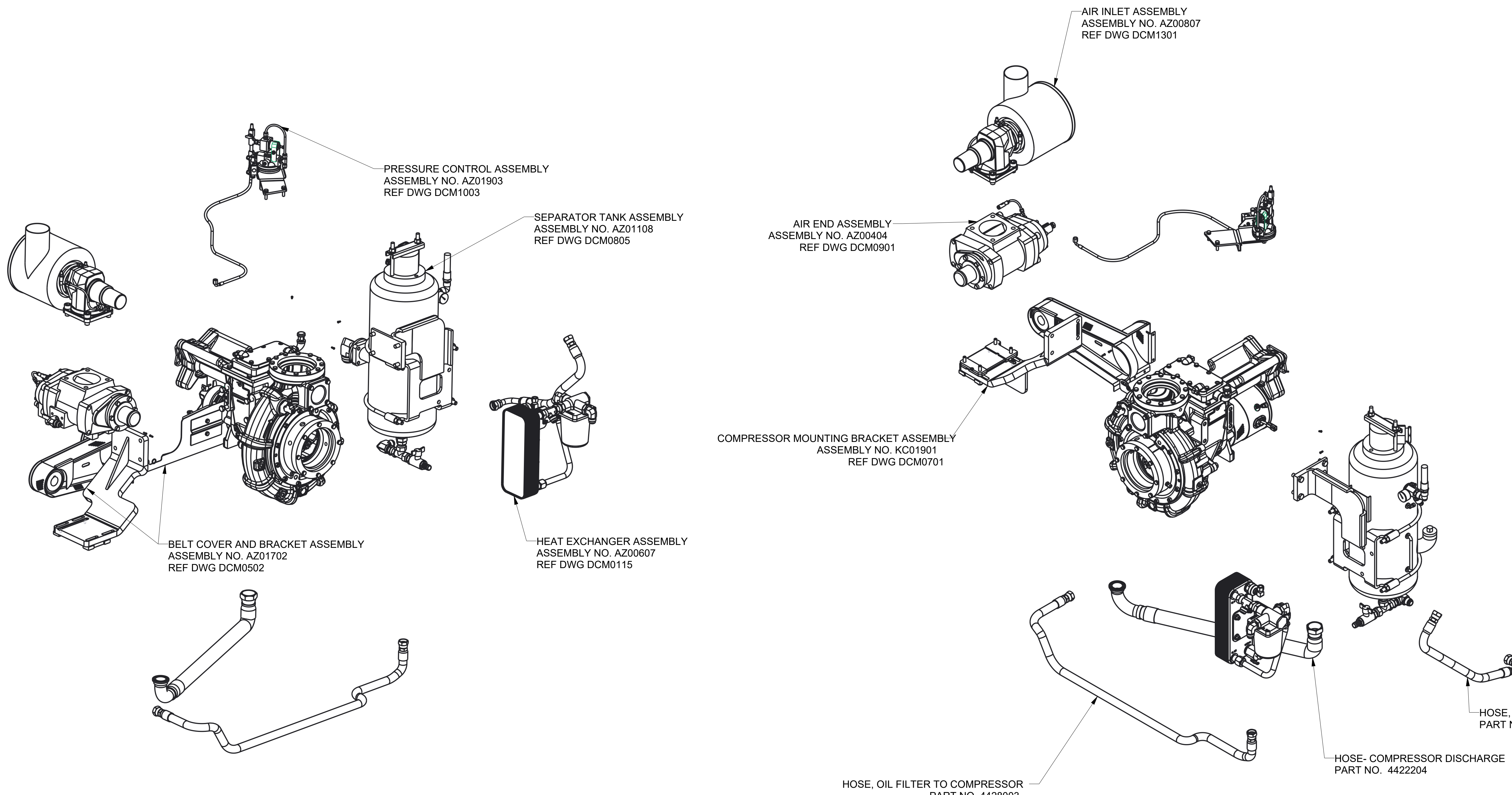
MATERIAL DESCRIPTION:
THIS DESIGN IS THE PROPERTY OF W.S. DARLEY AND CO. - UNAUTHORIZED REPRODUCTION IS PROHIBITED

DATE 26SEP2007
SCALE 1/8
DPD1201

MODEL NAME: DPD1201
MEL CREATED: 25SEP2007
SHEET: 1/2

W.S. Darley & Co.
ITASCA, IL - CHIPPEWA FALLS, WI

REVISIONS				
LTR	DESCRIPTION	DATE	CHG. NO.	APPRD.



MODEL NAME: DPD1201 MKL CREATED: 25SEP2007 SHEET: 2/2 D

REMOVE SHARP EDGES		INCH (MILLIMETER)		OLD PART NO.	TOLERANCE EXCEPT AS NOTED	
MATERIAL DESCRIPTION:		MATERIAL NO.	PATTERN NO.		.00 ±.03 .000 ±.010 ANGLES ±.1°	DWG - PSPBC DIMENSIONAL
THIS DESIGN IS THE PROPERTY OF W.S. DARLEY AND CO. - UNAUTHORIZED REPRODUCTION IS PROHIBITED		ALL DIMENSIONS IN INCHES UNLESS NOTED		DO NOT SCALE PRINT	DRN MWE CHKD WAH TRCD	DATE 26SEP2007 SCALE 1/8

DPD1201