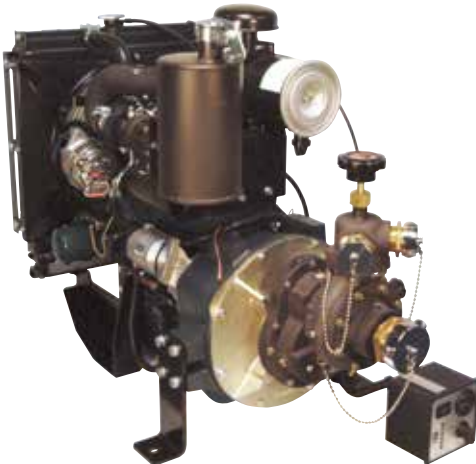


# 1-1/2AGE 42K

HIGH PRESSURE, MEDIUM VOLUME, GEAR DRIVEN, ENGINE MOUNTED



## ENGINE

- Kubota V1505 Diesel: 42 HP turbo diesel, 4 cylinders, liquid-cooled, 12-volt, electric start, 40 amp alternator, pressure lubed, oil and fuel pump filters

## DIMENSIONS & WEIGHT

- 41" L x 24" W x 42 1/2" H, 523 lbs. (237 kg)

## APPLICATIONS

- Booster reel/booster tank fill, multiple hand lines, wildland/attack fire suppression

## STANDARD FEATURES

- Aluminum alloy casing and discharge valve
- Sulfuric anodized aluminum alloy gear case
- Bronze impeller and wear rings
- Stainless steel impeller shaft
- Heat treated alloy steel helical gears
- Ball bearing construction
- Adjustable throttle
- 2" NPT suction
- 2-1/2" or 1-2/2" NPT discharge

## OPTIONS

- Dual panels, electric and manual throttles, rotary vane primer

## PERFORMANCE

115 gpm (435 L/M) @ 230 psi (15.8 bar)  
75 gpm (283 L/M) @ 285 psi (19.6 bar)  
25 gpm (94 L/M) @ 295 psi (20.3 bar)

