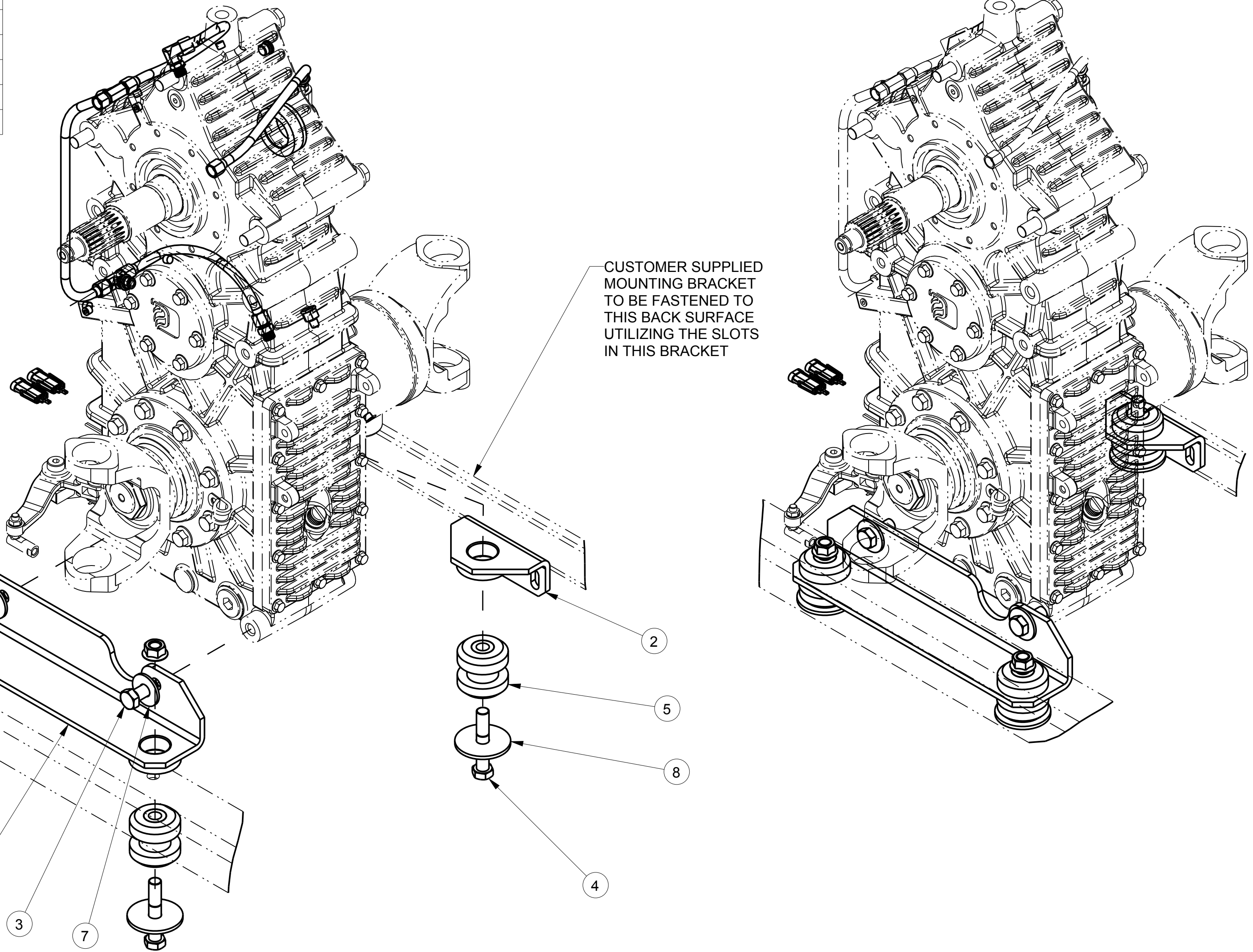


NO.	DESCRIPTION	PART NO.	QTY.
1	BRACKET - FRONT, MEGATRANS	4032600	1
2	BRACKET - REAR, MEGATRANS	4032700	1
3	HHCS - .625-11 x 1.50, GR5	5400080	2
4	HHCS - .625-11 x 3.50, GR5	5400085	3
5	MOUNT - RESILIENT	4421800	3
6	NUT - FLANGED TOP LOCK	5403407	2
7	WASHER - FLAT, 5/8, STEEL	3603805	2
8	WASHER - SPECIAL, SNUBBING	3603912	3

REVISIONS				
LTR	DESCRIPTION	DATE	CHG NO.	APPR'D



CUSTOMER SUPPLIED MOUNTING BRACKET TO BE FASTENED TO THE TOP OF THE ISOLATOR ONCE ASSEMBLED

CUSTOMER SUPPLIED MOUNTING BRACKET TO BE FASTENED TO THIS BACK SURFACE UTILIZING THE SLOTS IN THIS BRACKET

NOTE:
1) 4421800 IS SHOWN REPRESENTATIONAL FORMAT, THIS PART IS ACTUALLY COMPRISED OF (2) PIECES.

MODEL NAME	MDL CREATED	SHEET
KM01400	08-OCT-2009	1/1 C

REMOVE SHARP EDGES	INCH (MILLIMETER)	THIRD ANGLE PROJECTION	OLD PART NO.	TOLERANCE EXCEPT AS NOTED	W.S. Darley & Co. ITASCA, IL - CHIPPEWA FALLS, WI
		MATERIAL NO.	PATTERN NO.	.00 ±.03 .000 ±.010 ANGLES ±1°	
MATERIAL DESCRIPTION:		DO NOT SCALE PRINT		DR'N DWS	DATE 03-Mar-10
THIS DESIGN IS THE PROPERTY OF W.S. DARLEY AND CO. - UNAUTHORIZED REPRODUCTION IS PROHIBITED		ALL DIMENSIONS IN INCHES UNLESS NOTED		CHKD DWS	SCALE 1/8
				TRCD	DZM0001