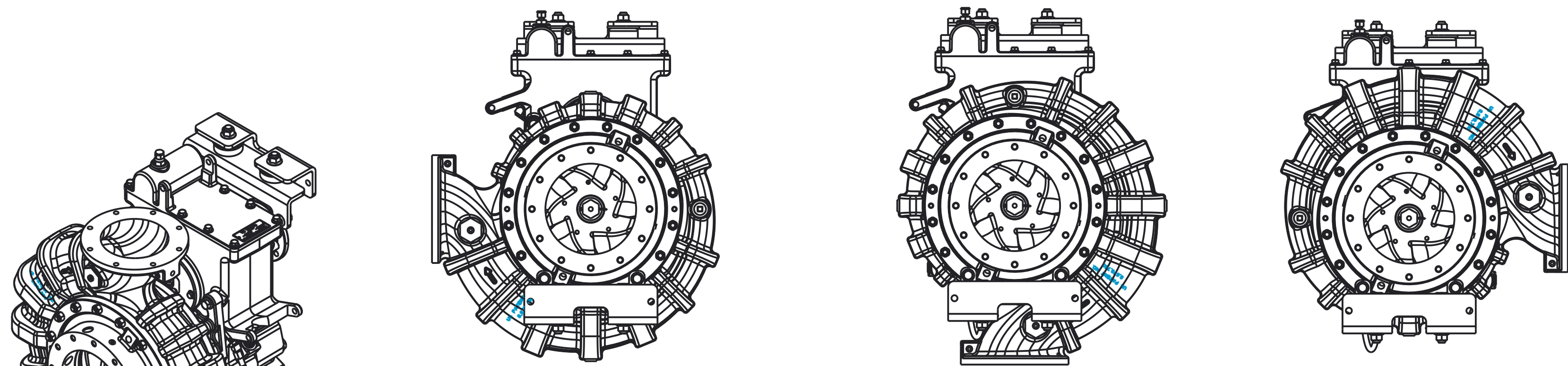


REVISIONS				
LTR	DESCRIPTION	DATE	CHG NO.	APPRD

OPTIONAL PUMP CASING POSITIONS
DISCHARGE CENTERED TO SUCTION

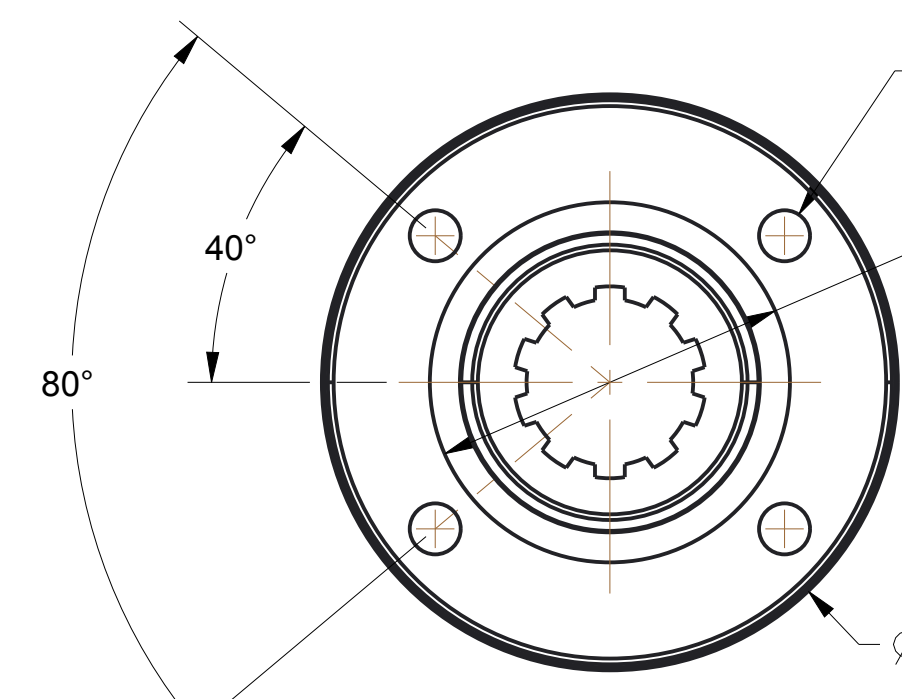


9 O'CLOCK DISCHARGE

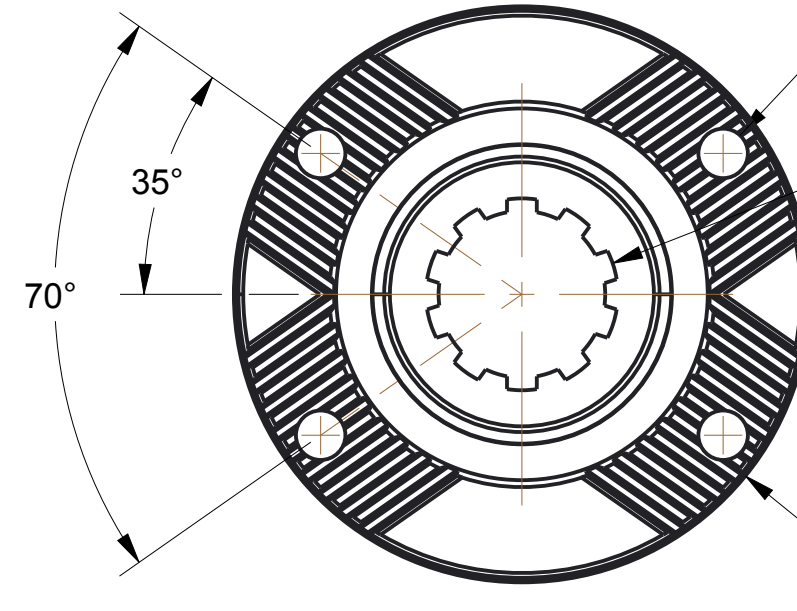
6 O'CLOCK DISCHARGE

3 O'CLOCK DISCHARGE

SCALE 1/8

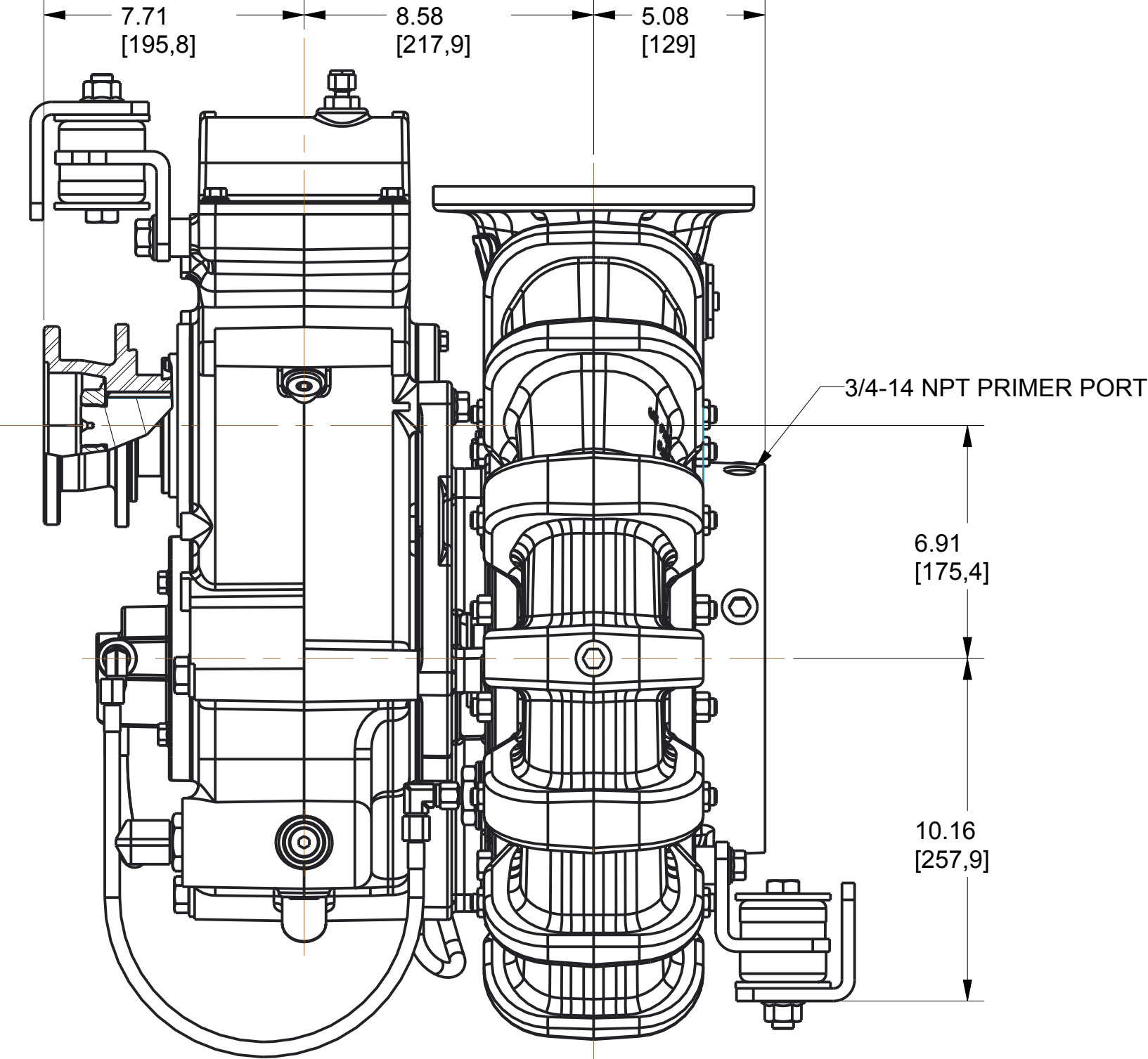
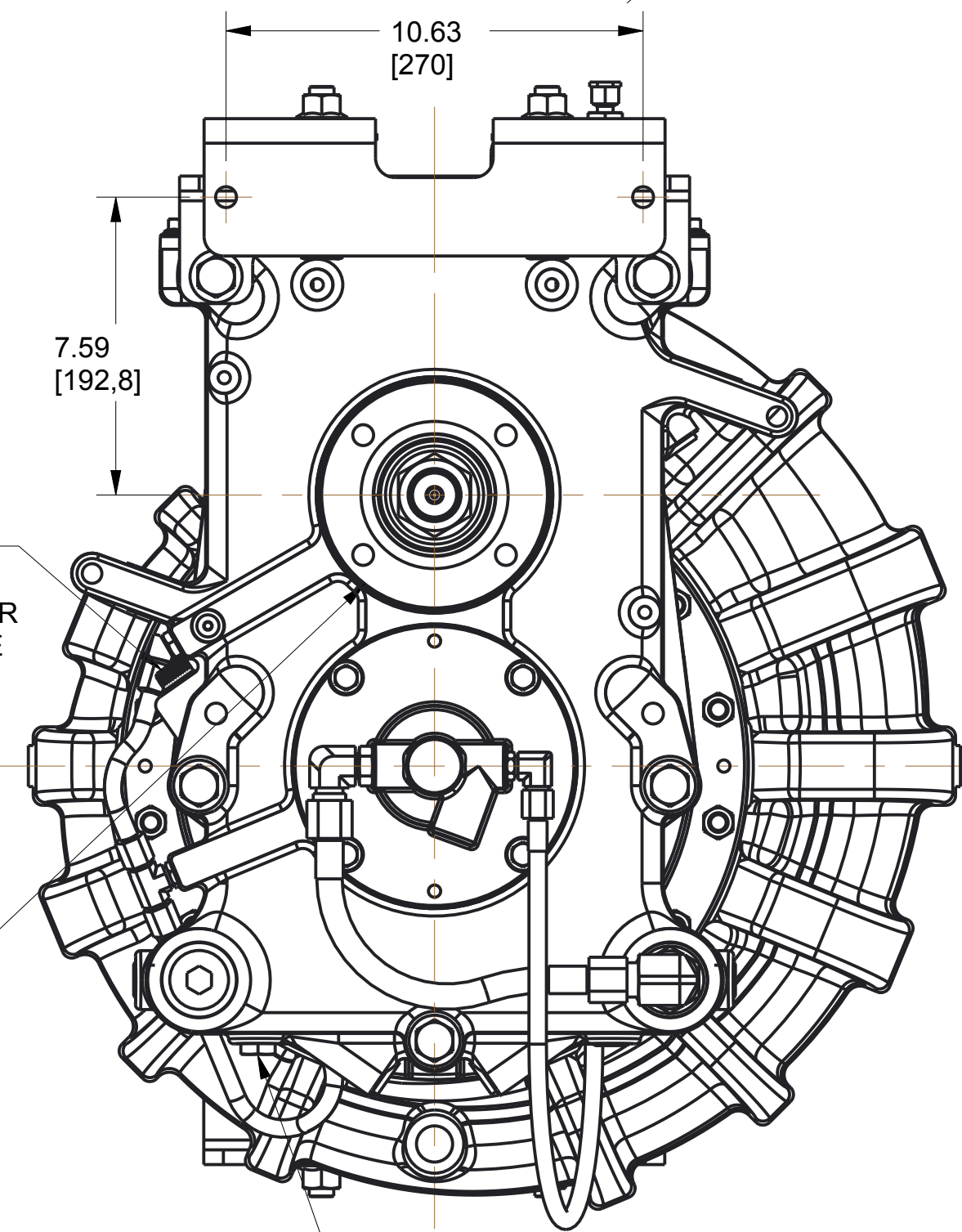
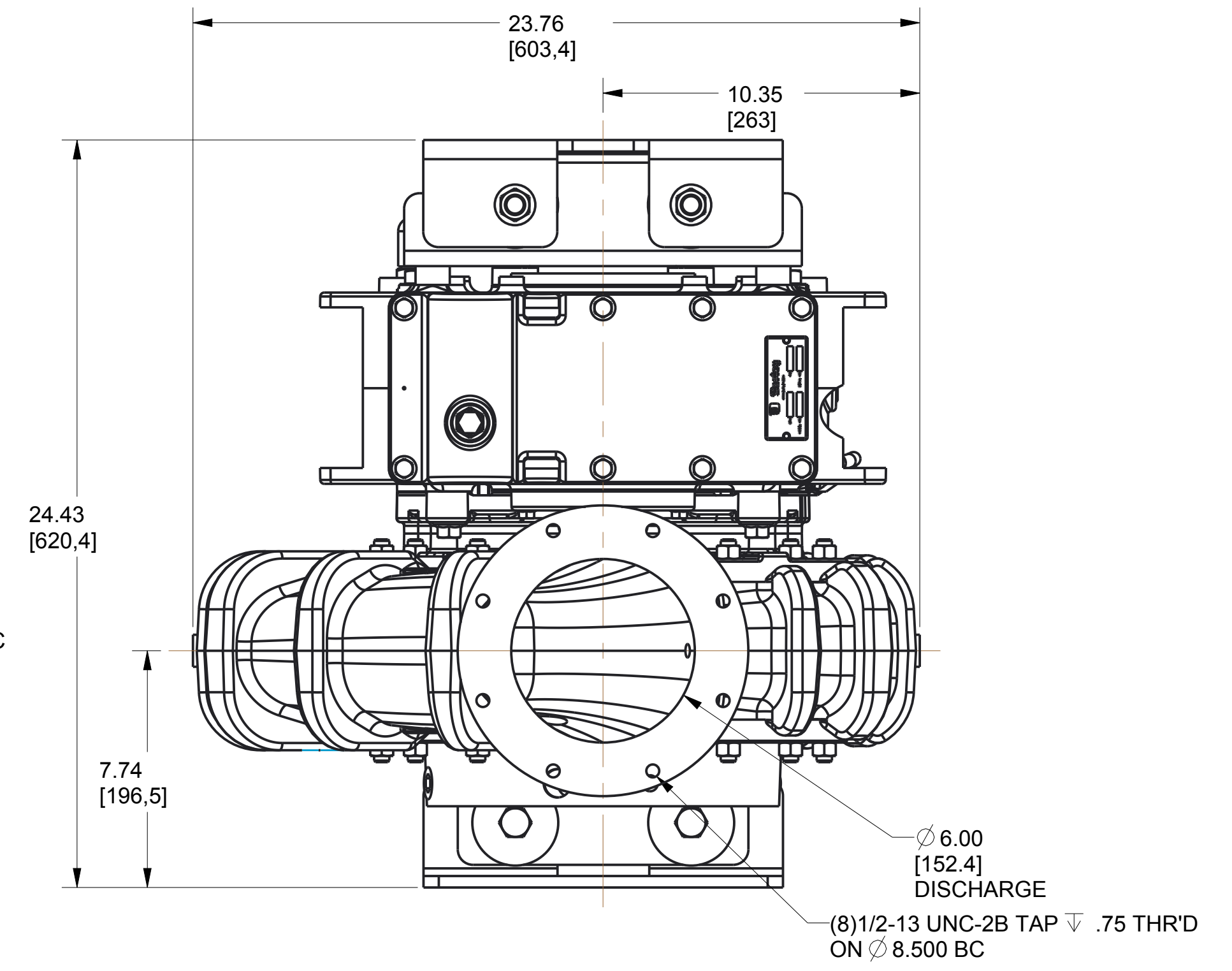


1550 COMPANION FLANGE

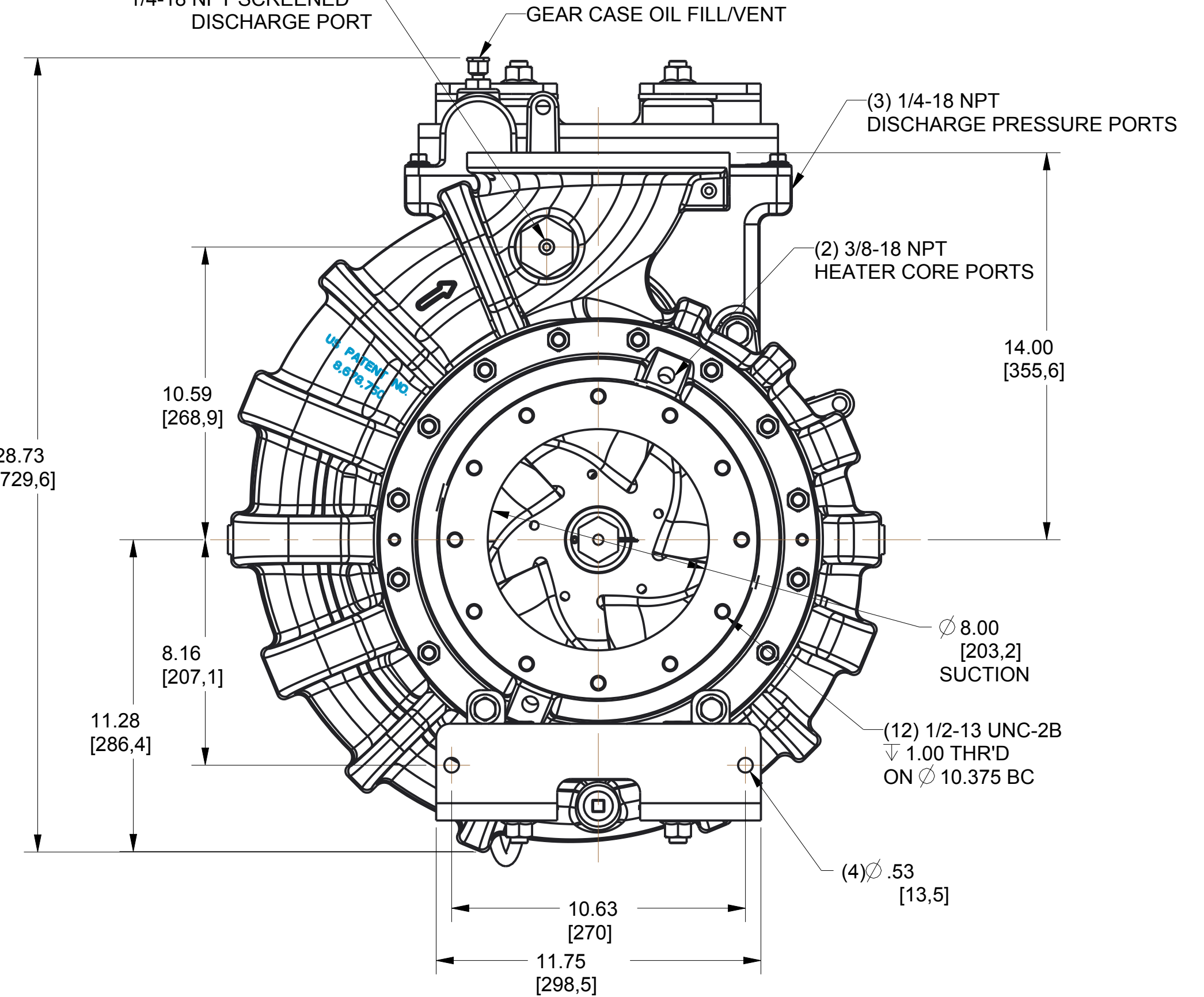


ISO 8667-T150 TOOTHED FLANGE

SCALE 1/2



SECTION A-A



REFERENCE NOTES:
APPROXIMATE WEIGHT = 662 LB (300 KG)
PUMP SHOWN IS COMPRISED OF THE FOLLOWING ASSEMBLIES:
TRANSMISSION - TP01921
PUMP - PZ00001 (FRESH WATER)
IMPELLER - 2908600 (ENGINE ROTATION DRIVE SOURCE - ER)
TRANSMISSION MOUNTING KIT - KM02103
SUCTION HEAD MOUNTING KIT - KM02102
GEAR RATIO - KR07306 (1.76:1) - EXTERIOR DIMENSIONS ARE THE SAME REGARDLESS OF THE GEAR RATIO USED
LOCK-ON INPUT YOKE - 4822512 (1550) OR 4822711 (T150)

REMOVE SHARP EDGES	INCH (MILLIMETER)	OLD PART NO.	TOLERANCE EXCEPT AS NOTED 00 ±.03 2000 ±.010 ANGLES ±.1°	W.S. Darley & Co. ITASCA, IL - CHIPPEWA FALLS, WI
MATERIAL DESCRIPTION: AS LISTED		MATERIAL NO.	PATTERN NO.	DWG - ZSP, INPUT ABOVE W/O PRIMER
THIS DESIGN IS THE PROPERTY OF W.S. DARLEY AND CO. - UNAUTHORIZED REPRODUCTION IS PROHIBITED	ALL DIMENSIONS IN INCHES UNLESS NOTED	DO NOT SCALE PRINT	DRN WAH CHKD TRCD	DATE 30OCT2017 SCALE 1/4

MODEL NAME: DZD0063 MEL CREATED: 30OCT2017 SHEET: 1/1 D

DZD0063