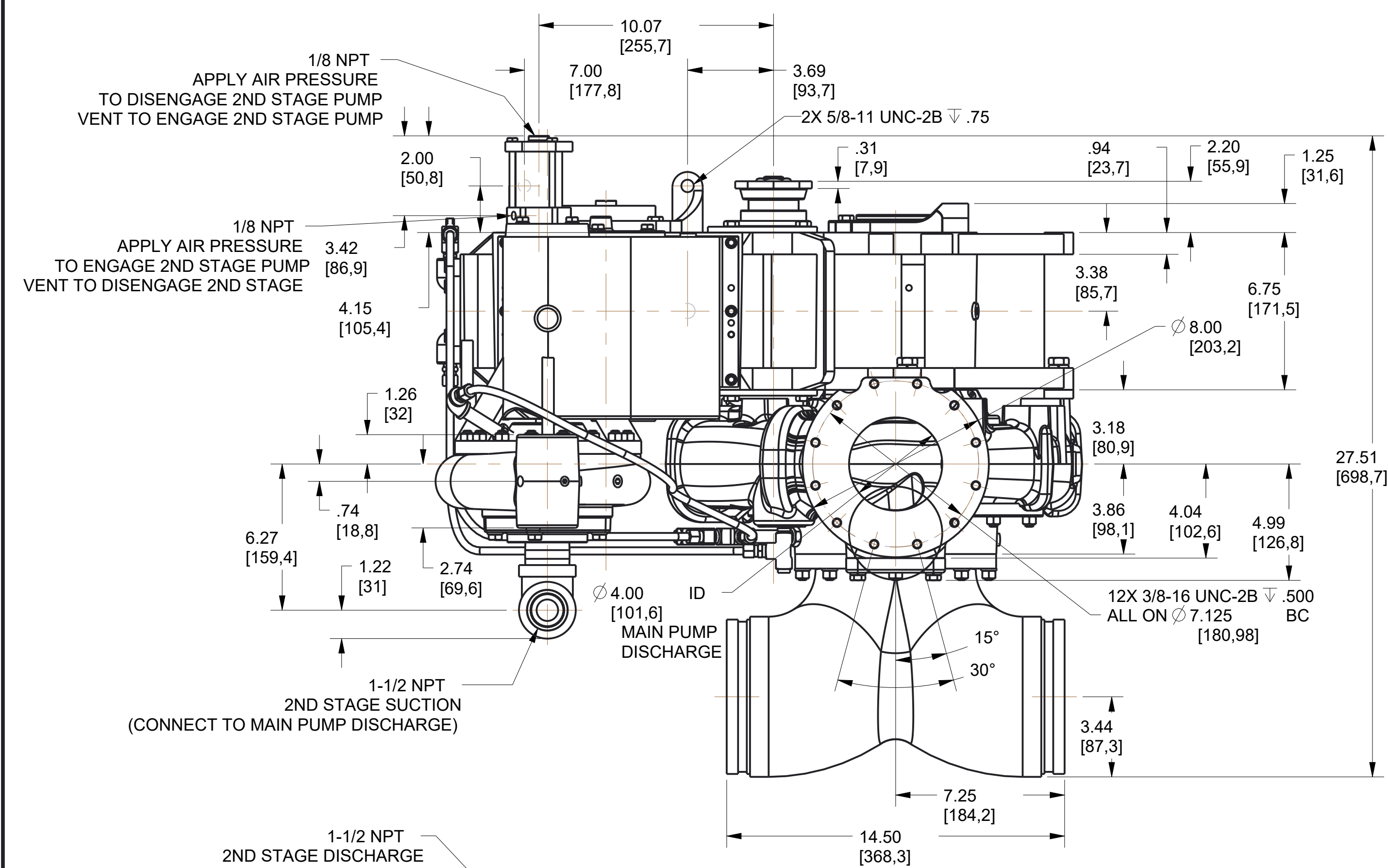
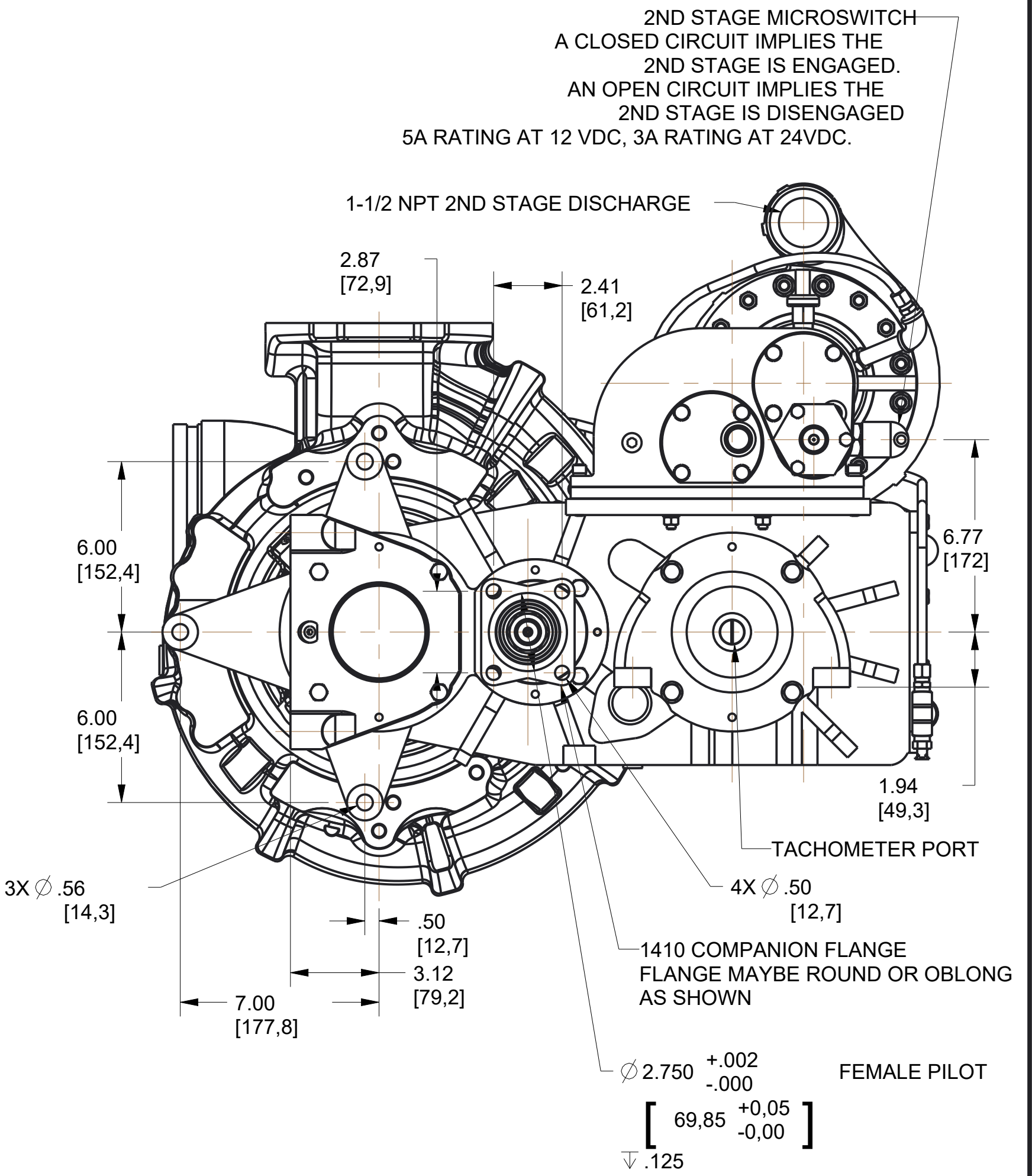
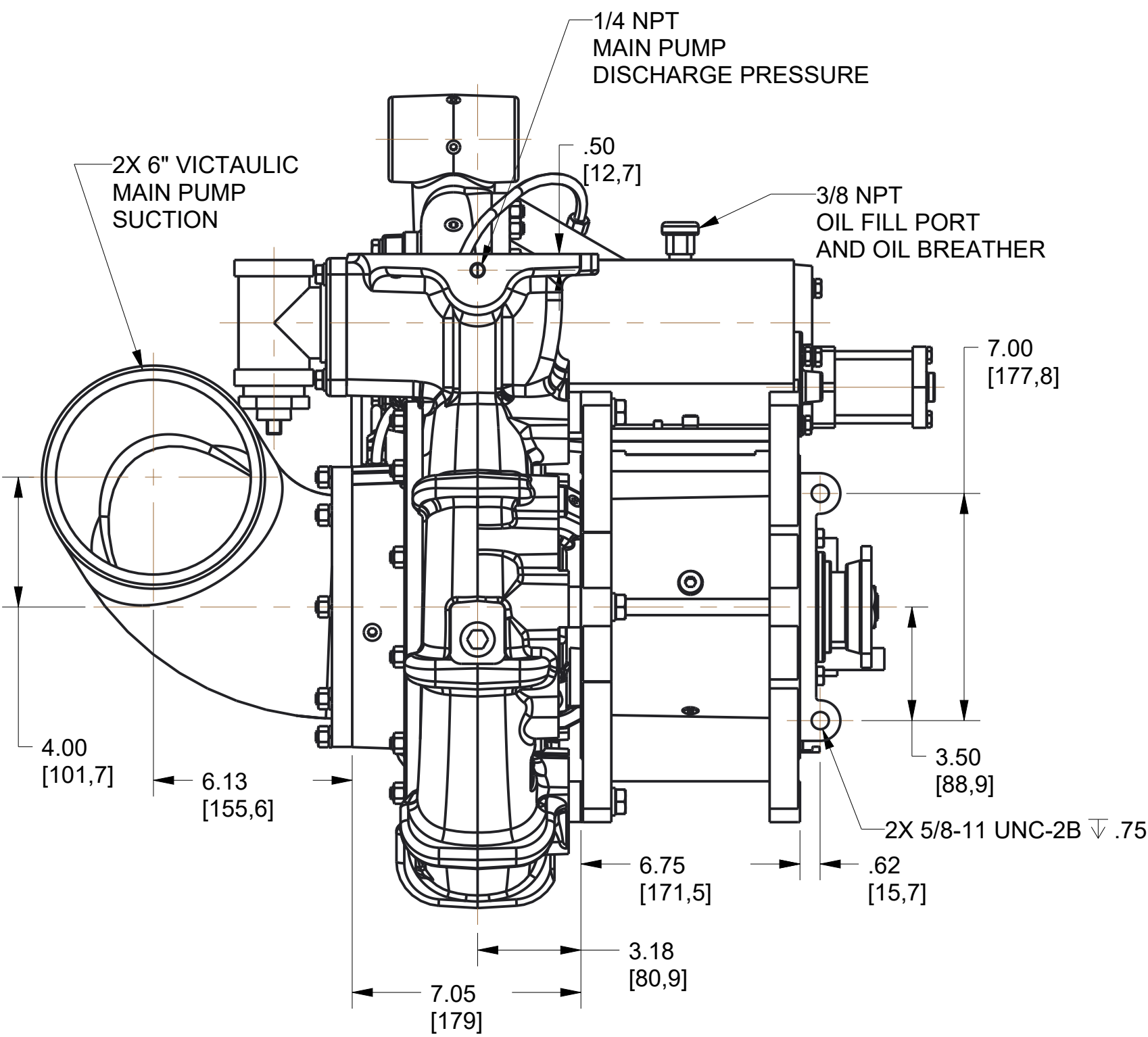
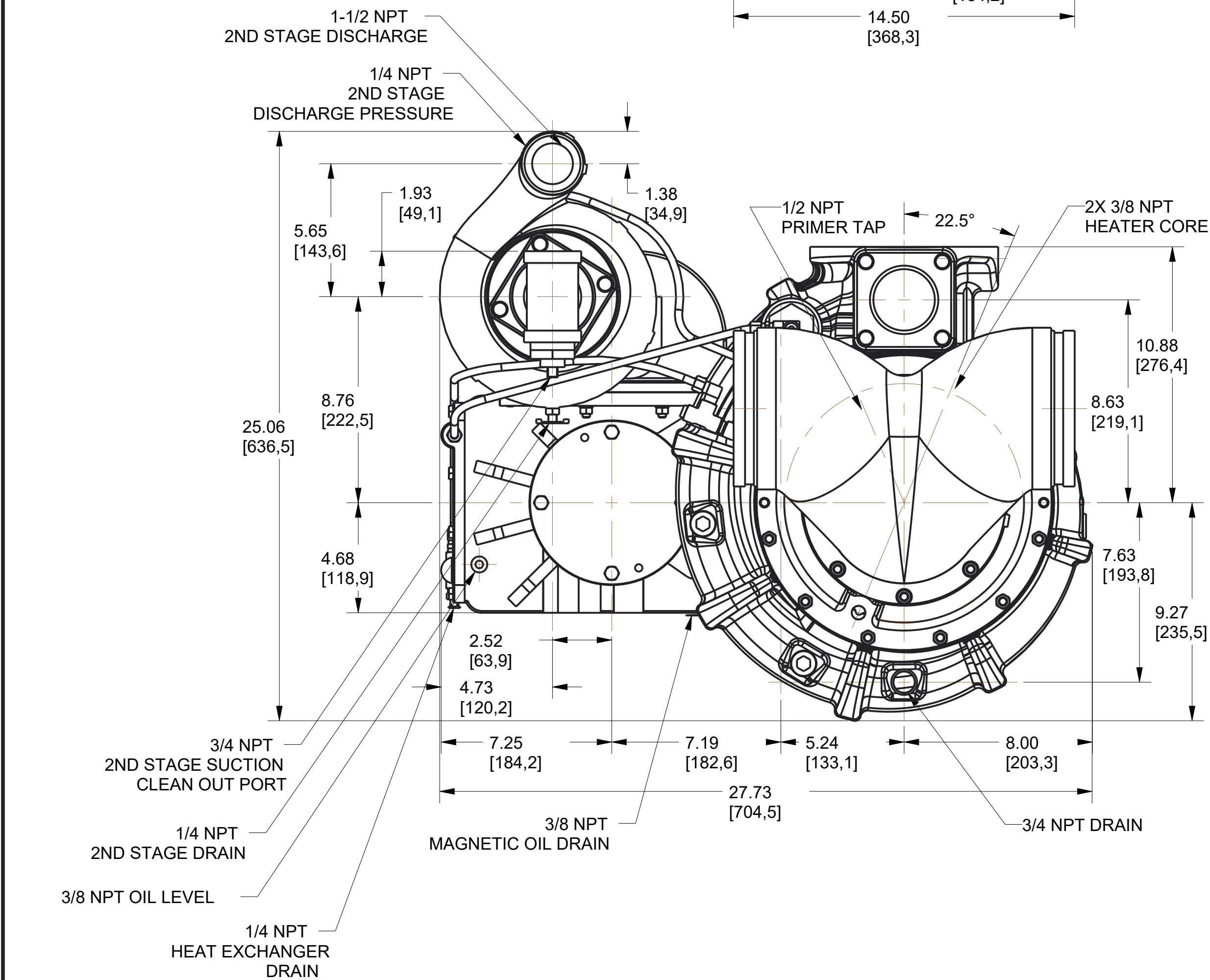


REVISIONS				
LTR	DESCRIPTION	DATE	CHG NO.	APPR'D



REFERENCE NOTES:
1) WEIGHT = 581 LB (264 KG).
2) THE 2ND STAGE CAN ONLY BE ENGAGED OR DIS-ENGAGED WHEN THE PTO IS DIS-ENGAGED.
3) THE 2ND STAGE SUCTION NEEDS TO BE PLUMBED BACK TO THE 1ST STAGE DISCHARGE.
4) PUMP REQUIRES AN ENGINE ROTATION DRIVE SOURCE.
5) PUMP ASSEMBLY IS SHOWN WITH THE FOLLOWING ASSEMBLIES:
PP00277 - PUMP-PS, LH, MECH, LARGE EYE, WIDE
TP00630 - TRANSMISSION, CENTER INPUT, HORIZONTAL GEARBOX
PH00938 - PUMP-LDM, 2ND STAGE, 8AB MEC
KR06512 - 2.03:1 AND 4.05:1 RATIO - PSRH/PSPH, CENTER INPUT, HORIZONTAL GEARBOX
YF00601 - ASSY-FLANGE, BLANK, CI
AM00408 - MISC-TRANS COOLING PLATE
KC02500 - 6" VICTAULIC SWEPT TEE



REMOVE SHARP EDGES

INCH
[MILLIMETER]



OLD PART NO.

TOLERANCE
EXCEPT
AS NOTED

W.S. Darley & Co.
ITASCA, IL - CHIPPEWA FALLS, WI

MATERIAL DESCRIPTION:

MATERIAL NO.

PATTERN NO.

DRN WAH

DATE 04OCT2020

THIS DESIGN IS THE PROPERTY OF
W.S. DARLEY AND CO. - UNAUTHORIZED
REPRODUCTION IS PROHIBITED.

ALL DIMENSIONS IN
INCHES UNLESS NOTED

DO NOT SCALE PRINT

CHKD SMS

SCALE 1/4

DPD0808

MODEL NAME: DPD0808

MDL CREATED: 05OCT2020

SHEET: 1/1

D