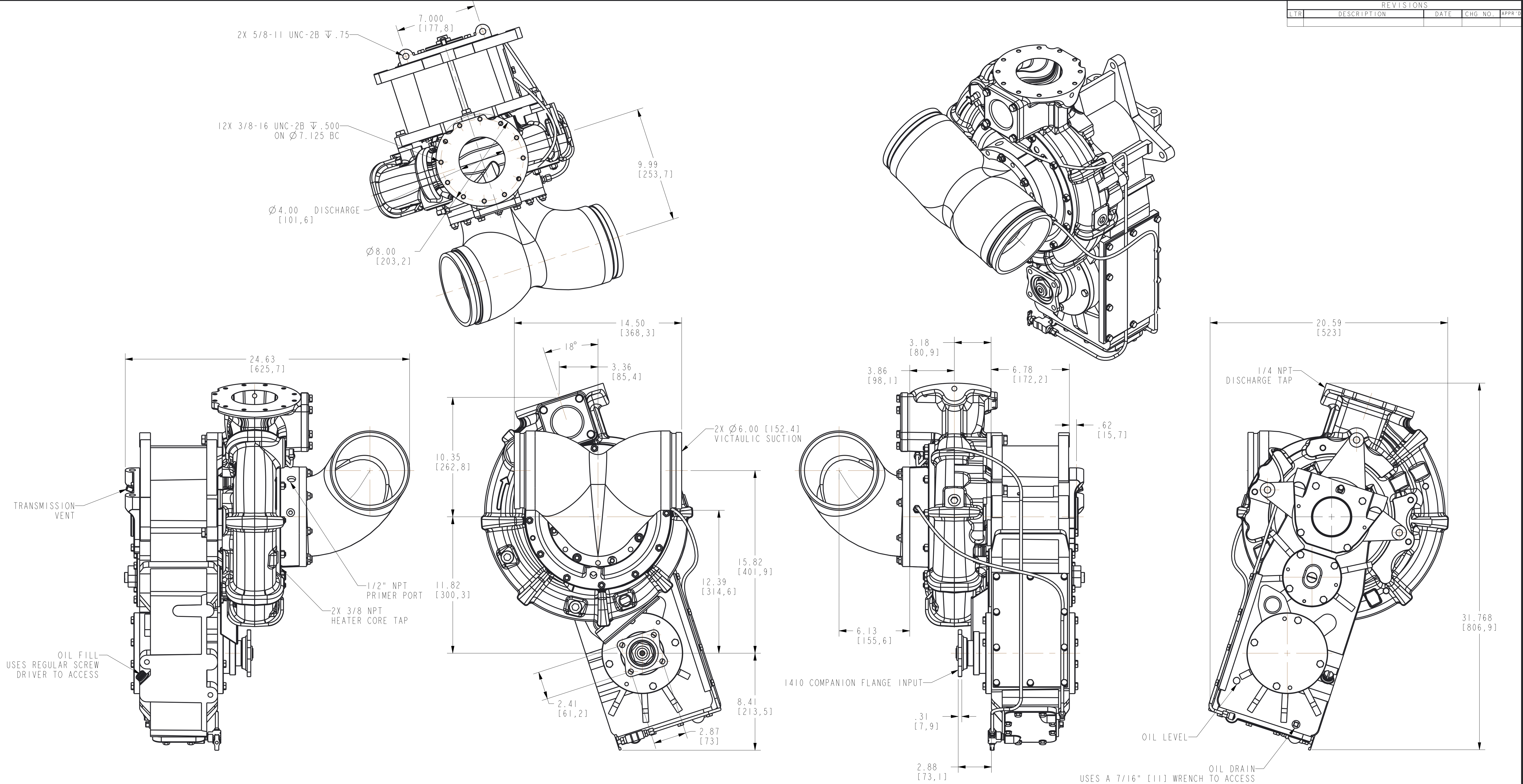


REVISIONS				
LTR	DESCRIPTION	DATE	CHG. NO.	APPR'D



NOTES:
1) APPROXIMATE WEIGHT: 450 LBS [204 KG]
2) FOR USE WITH ENGINE ROTATION DRIVE SOURCE

REFERENCE NOTES:
1) ASEMBLIES SHOWN
TRANSMISSION - TP00620
GEARCASE - 1804202
GEARCASE COVER - AN01301
PUMP - PP00273
COOLER - AM00408
INPUT COMPANION FLANGE - 4817816
DISCHARGE FLANGE ASSY - YF00601
WATER SHIELD - 3203308
GEAR RATIO - KR03640 (1.66:1)
SWEPT TEE - KC02504

REMOVE SHARP EDGES

INCH
[MILLIMETER]

WELD PROTECTION

OLD PART NO.

TOLERANCE
EXCEPT
AS NOTED

W.S. Darley & Co.
ITASCA, IL - CHIPPEWA FALLS, WI

MATERIAL DESCRIPTION:

MATERIAL NO.

PATTERN NO.

THIS DESIGN IS THE PROPERTY OF
W.S. DARLEY AND CO. - UNAUTHORIZED
REPRODUCTION IS PROHIBITED

ALL DIMENSIONS IN
INCHES UNLESS NOTED

DO NOT SCALE PRINT

DATE 05JUN2019
SCALE 1/4

DPD0413