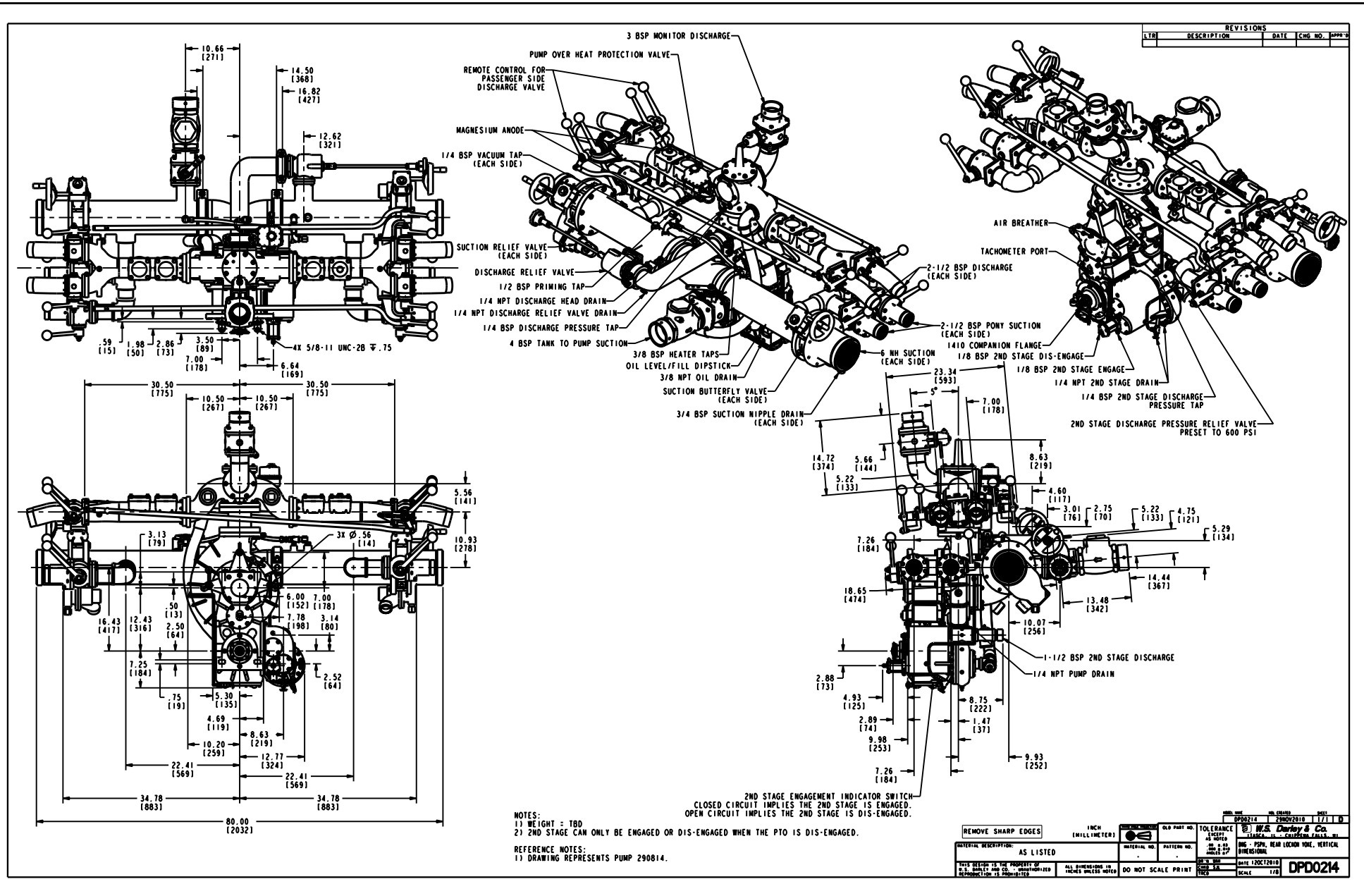


NAME:WAH OBJECT:DPD0214 DATE:30-Nov-10 14:23:13



REVISIONS			
LTB	DESCRIPTION	DATE	CHG NO. APPR

NOTES:
 1) WEIGHT - TBD
 2) 2ND STAGE CAN ONLY BE ENGAGED OR DIS-ENGAGED WHEN THE PTO IS DIS-ENGAGED.

REFERENCE NOTES:
 1) DRAWING REPRESENTS PUMP 290814.

2ND STAGE ENGAGEMENT INDICATOR SWITCH
 CLOSED CIRCUIT IMPLIES THE 2ND STAGE IS ENGAGED.
 OPEN CIRCUIT IMPLIES THE 2ND STAGE IS DIS-ENGAGED.

REMOVE SHARP EDGES		1 INCH (25.4 MILLIMETER)	OLD PART NO.	TOLERANCE	DATE 12/02/2010	SCALE 1/2
MATERIAL DESCRIPTION:	AS LISTED		PATTERN NO.	AS LISTED	DATE 12/02/2010	SCALE 1/2
THIS DRAWING IS THE PROPERTY OF W.S. DUNLAP & CO. UNLESS OTHERWISE SPECIFIED REPRODUCTION IS PROHIBITED.		ALL DIMENSIONS IN INCHES UNLESS NOTED		DO NOT SCALE PRINT		
W.S. DUNLAP & CO. MILWAUKEE, WISCONSIN, U.S.A. DIV. OF W.S. DUNLAP & CO. MILWAUKEE, WISCONSIN, U.S.A.				DATE 12/02/2010 SCALE 1/2		DPD0214