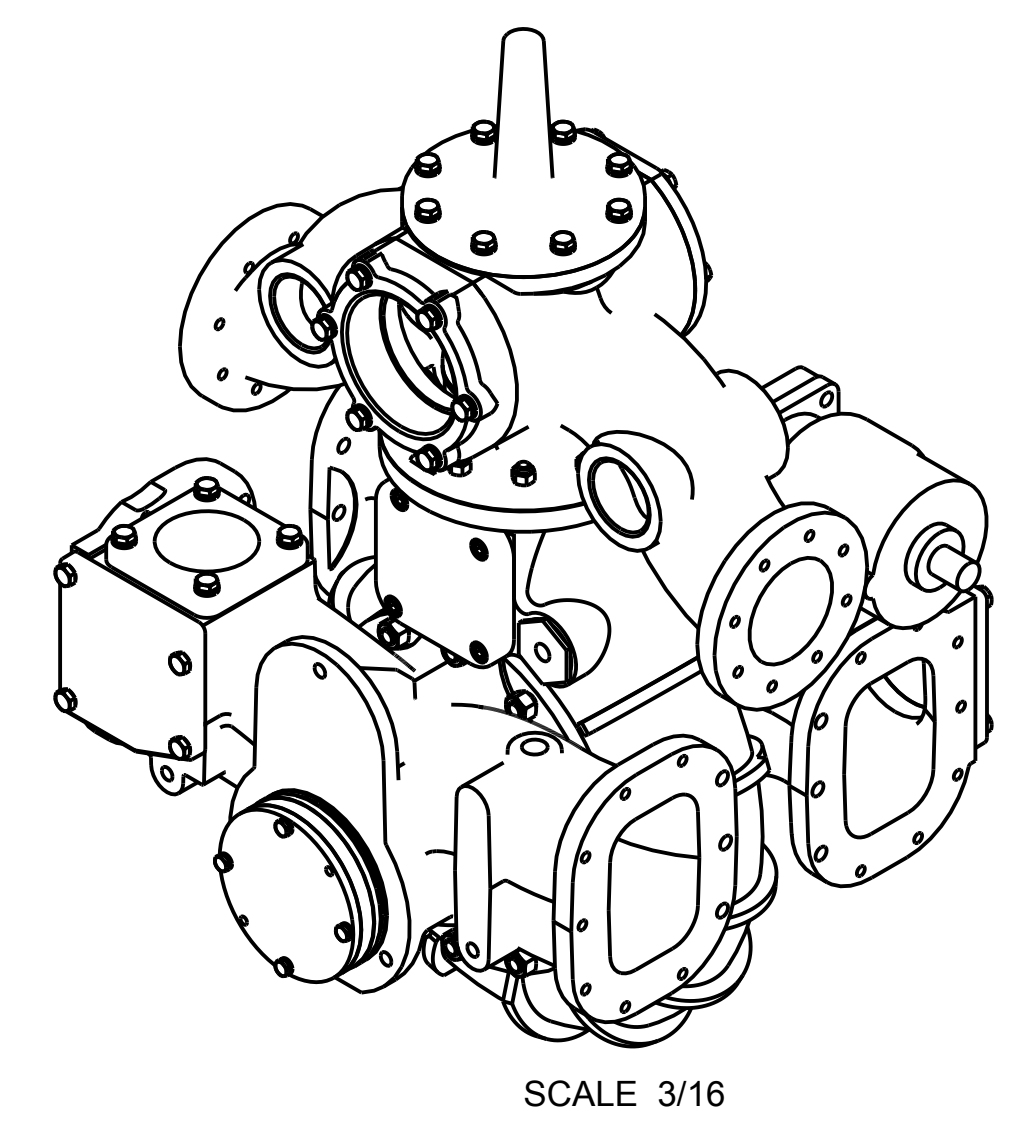
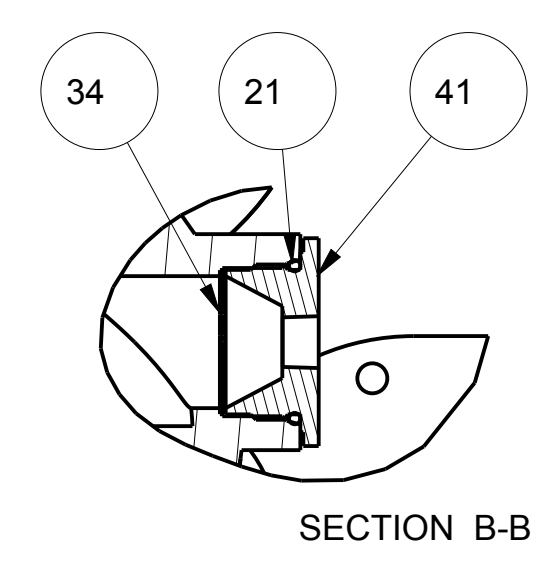
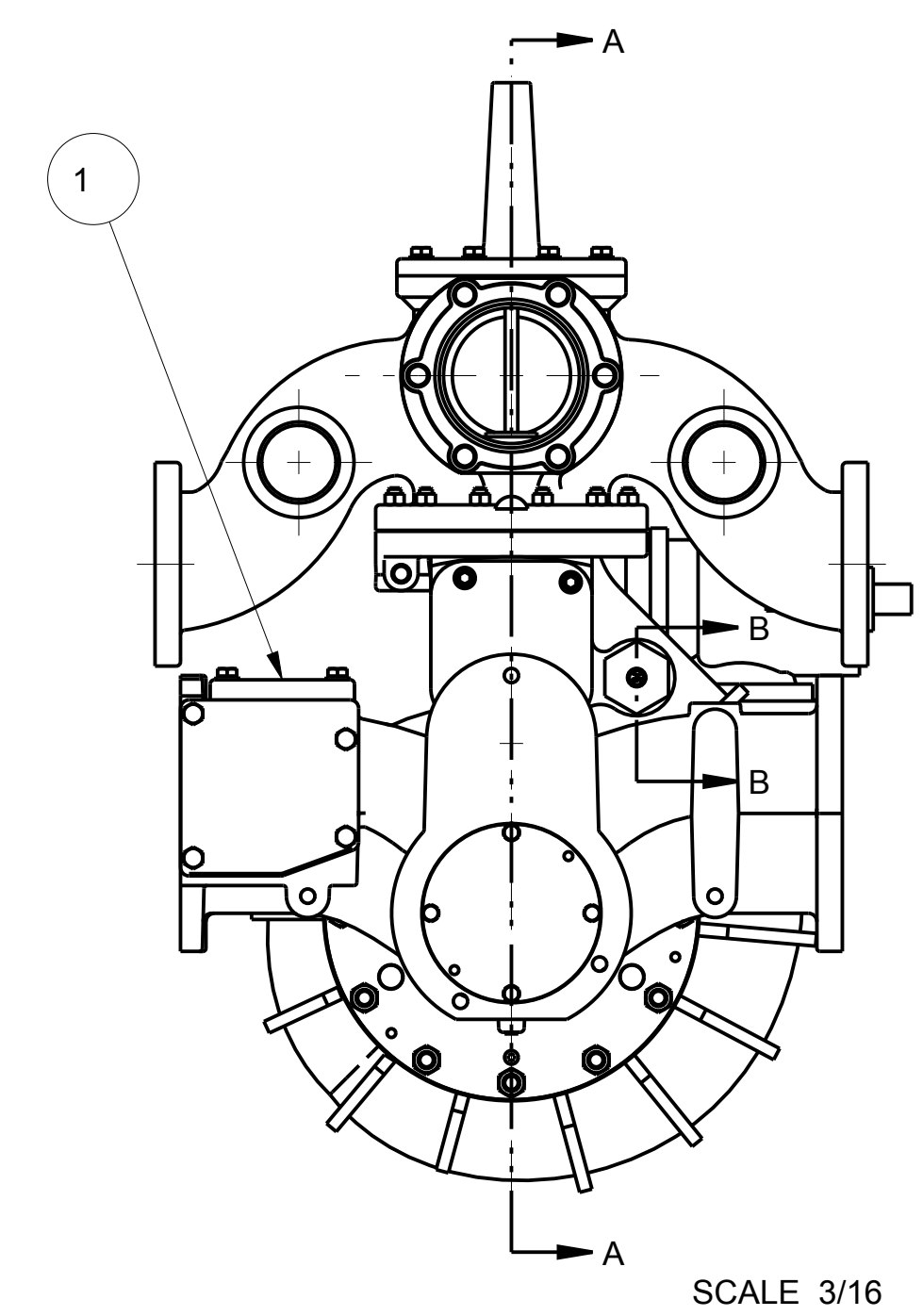
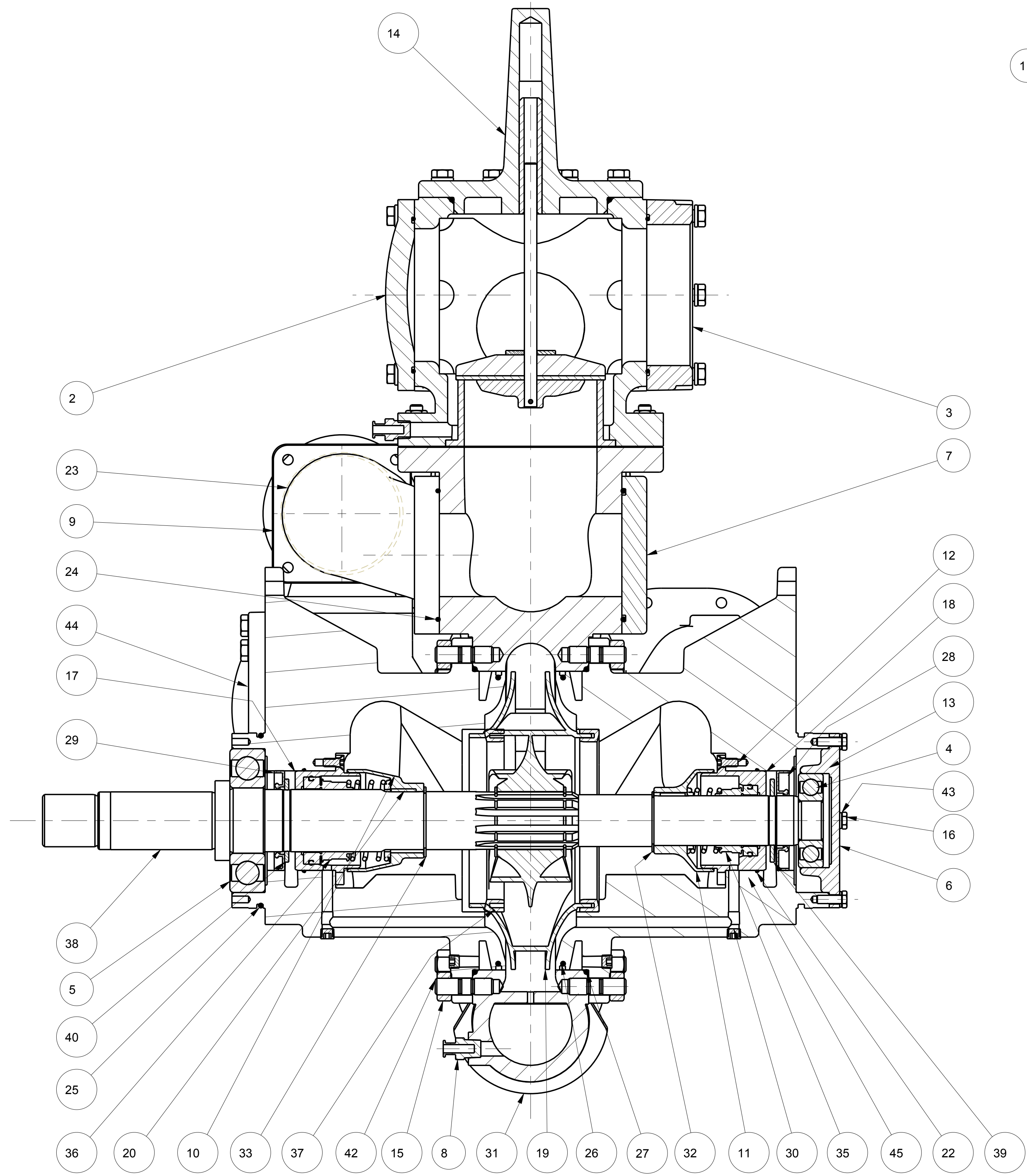


NO.	DESCRIPTION	PART NO.	QTY.
1	ASSY - FLANGE COVER, BLANK CI	YF00601	1
2	ASSY - FLANGE CVR, BLNK, O-RING	YF03500	1
3	ASSY - FLANGE, 4 NPT, CI	YF03304	1
4	BEARING-BALL, 306SFF	1721802	1
5	BEARING-BALL, 310SFF	1722100	1
6	CAP - BEARING, LDM/E	2303300	1
7	KIT - LDM, LS, RV FLANGE BLIND	KC01600	1
8	DRAINCOCK - 0.250 NPTM, 9KC BR	5203600	1
9	ELBOW - RELIEF VALVE, LDM	3101300	1
10	ENCLOSURE - MECH SEAL, LDM	1845000	1
11	ENCLOSURE - MECH SEAL, LDM	1845100	1
12	FHMS - .250-20 x 0.63, SS	5402402	6
13	HEAD - SUCTION, LDM, PACKING	2810110	2
14	HEAD ASSY - LDM DIS W/4" FLG	HL00112	1
15	HEX NUT - .500-13, GR 2	5403005	24
16	HHCS - .250-20 x 0.75, GR5	5400002	4
17	HOUSING - MECH SEAL, LDM	1844600	1
18	HOUSING - MECH SEAL, LDM	1844700	1
19	IMPELLER - LDM, MIXED FLOW	2904600	1
20	KEY - SQ., 0.19 X 0.75 316SS	3602440	2
21	O-RING - 1.47 x 1.71 x 0.09	3601401	1
22	O-RING - 3.00 x 3.12 x 0.06	3601011	2
23	O-RING - 3.50 x 3.69 x 0.09	3601101	2
24	O-RING - 3.75 x 4.00 x 0.12	3601210	1
25	O-RING - 5.00 x 5.25 x 0.12	3601227	1
26	O-RING - 8.50 x 8.75 x 0.12	3601202	2
27	O-RING - 9.00 x 9.25 x 0.12	3601201	2
28	OIL SEAL - 1.500 ID X 3.005 OD	3600541	1
29	OIL SEAL - 1.875 ID X 3.005 OD	3600540	1
30	PLUG - PIPE, 0.125, SST SOC HD	1080533	4
31	PUMP CASING - LS	2055602	1
32	RING - RETAINER, 5100-150HSS2	3600430	1
33	RING - RETAINER, 5100-175-H-ST	3600408	3
34	SCREEN STRAINER	1122400	1
35	SEAL - SHAFT, 1.500", WELD SPRG	1844800	1
36	SEAL - SHAFT, 1.875", WELD SPRG	1844900	1
37	SEAL RING - LDM	3403800	2
38	SHAFT - PUMP, LDMH, MECH SEAL	5014201	1
39	SLINGER - WATER, 1.421	3203202	1
40	SLINGER - WATER, 1.786	3203209	1
41	STRAINER - FITTING	1122300	1
42	STUD - 0.500-13 X 1.750, GR5	3606401	24
43	WASHER - LOCK, 0.250 ID	3603501	4
44	ASSY-FLG, COVER BLANK	YF06400	2
45	PLUG - STUFFING BOX HOLE	2153401	2

REVISIONS				
LTR	DESCRIPTION	DATE	CHG NO.	APPRD
A	REPLACED SUCTION HEAD WITH 2810110 AND ADDED COVER ASM	14JUN11	7433	EAS2
B	2153401 WAS 4208800	28JUL11	7589	EAS2



SECTION A-A

REMOVE SHARP EDGES		INCH (MILLIMETER)	OLD PART NO.	TOLERANCE EXCEPT AS NOTED	 W.S. Darley & Co. ITASCA, IL - CHIPPEWA FALLS, WI
MATERIAL DESCRIPTION:			MATERIAL NO.	PATTERN NO.	
THIS DESIGN IS THE PROPERTY OF W.S. DARLEY AND CO. - UNAUTHORIZED REPRODUCTION IS PROHIBITED		ALL DIMENSIONS IN INCHES UNLESS NOTED	DO NOT SCALE PRINT		DWG - LDMH PUMP, MECH SEAL CROSS SECTION DATE 13-AUG-01 SCALE 1/2

DLC1401