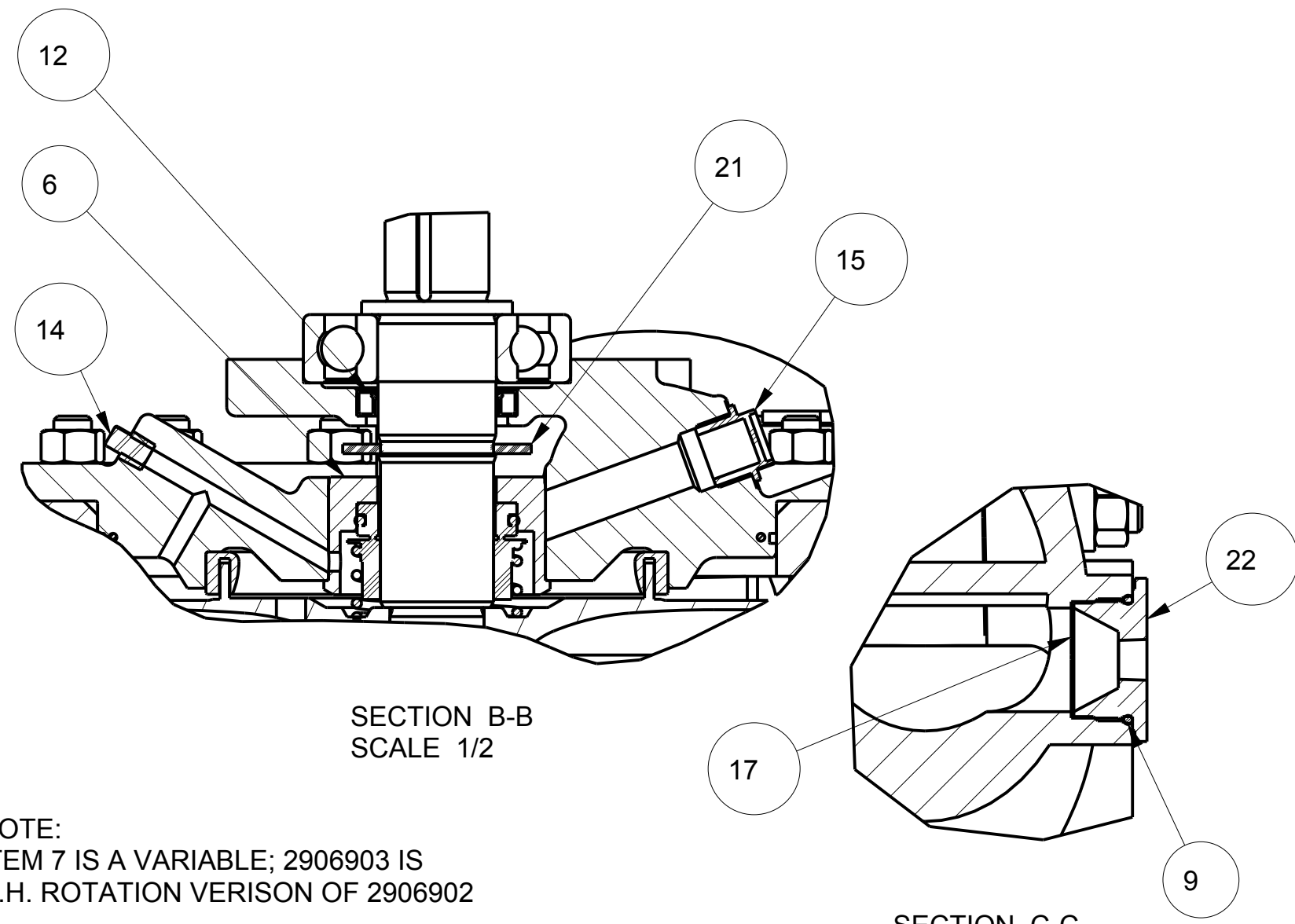
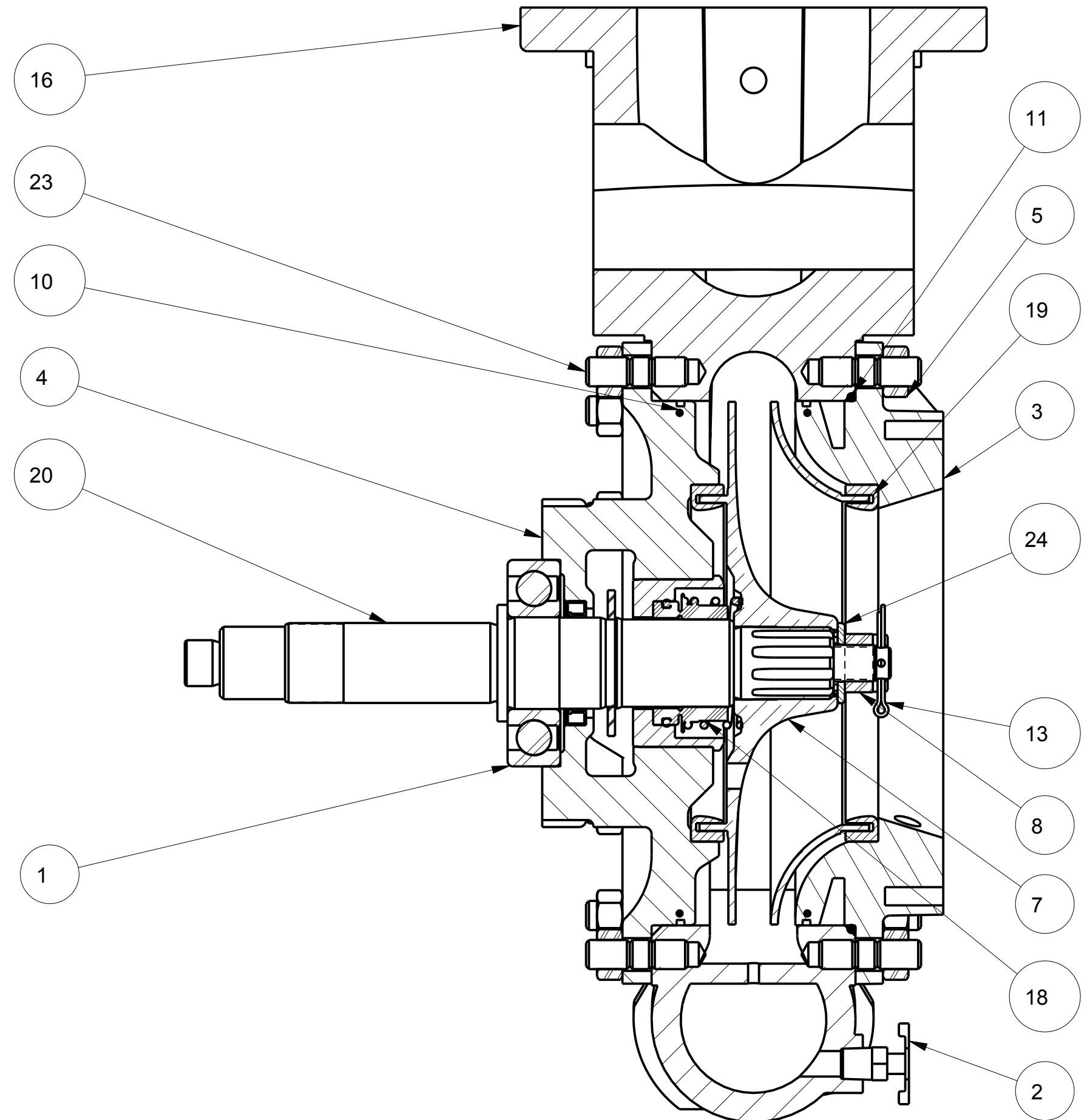
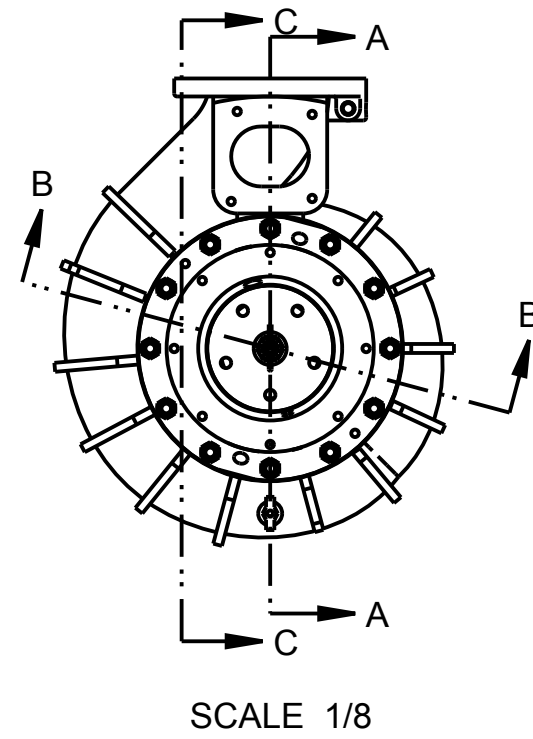


NO.	DESCRIPTION	PART NO.	QTY.
1	BEARING-BALL, 308SF	1722001	1
2	DRAINCOCK - 0.250 NPTM, 9KC BR	5203600	1
3	HEAD - SUCTION, LS	2809800	1
4	HEAD-INBOARD, LS	2809702	1
5	HEX NUT - .500-13, GR 2	5403005	24
6	HOUSING - MECHANICAL SEAL	1844100	1
7	IMPELLER - LS, L.H.	2906902	1
8	NUT - CASTLE, .625-18, 303 SST	5403428	1
9	O-RING - 1.47 x 1.71 x 0.09	3601401	1
10	O-RING - 8.50 x 8.69 x 0.09	3601121	2
11	O-RING - 9.00 x 9.25 x 0.12	3601201	1
12	OIL SEAL - 1.563 ID X 2.129 OD	3600534	1
13	PIN - COTTER, .125 x 1.50, SST	3605205	1
14	PLUG - PIPE, 0.125, BR SQ HD	1080501	1
15	PLUG - PLASTIC	4208800	1
16	PUMP CASING - LS	2055602	1
17	SCREEN STRAINER	1122400	1
18	SEAL - SHAFT, 1.500", TYPE 2	1842201	1
19	SEAL RING - LS	3406800	2
20	SHAFT - IMPELLER, LS	5019305	1
21	SLINGER - WATER, 1.421	3203202	1
22	STRAINER - FITTING	1122300	1
23	STUD - 0.500-13 X 1.750, GR5	3606401	24
24	WASHER-IMPELLER	3603322	1

REVISIONS				
LTR	DESCRIPTION	DATE	CHG NO.	APPR'D



NOTE:
ITEM 7 IS A VARIABLE; 2906903 IS
R.H. ROTATION VERISON OF 2906902

ITEM 1 ON TRANSMISSION BOM

ITEMS 5, 23 ON KF01400

ITEMS 9, 10, 11 ON KG01200

REMOVE SHARP EDGES		INCH [MILLIMETER]	THIRD ANGLE PROJECTION	OLD PART NO.	TOLERANCE EXCEPT AS NOTED .00 ±.03 .000 ±.010 ANGLES ±1°	MODEL NAME DLC0504	MDL CREATED 11AUG00	SHEET 1/1	C
MATERIAL DESCRIPTION: ---		MATERIAL NO.	PATTERN NO.	DWG - LS/NEW KS, LH MECH SEAL CROSS SECTION PL00204		DATE 11-Aug-00		SCALE 1/2	
THIS DESIGN IS THE PROPERTY OF W.S. DARLEY AND CO. - UNAUTHORIZED REPRODUCTION IS PROHIBITED		ALL DIMENSIONS IN INCHES UNLESS NOTED		DO NOT SCALE PRINT		DR'N DLW CHKD TED TRCD		DATE 11-Aug-00 SCALE 1/2	
						W.S. Darley & Co. ITASCA, IL - CHIPPEWA FALLS, WI		DLC0504	