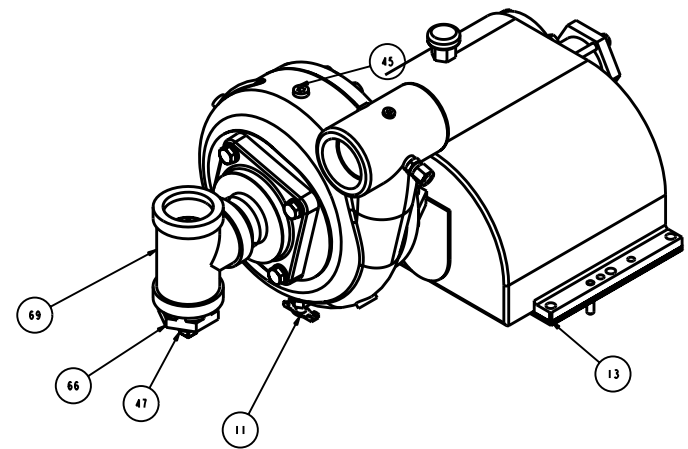
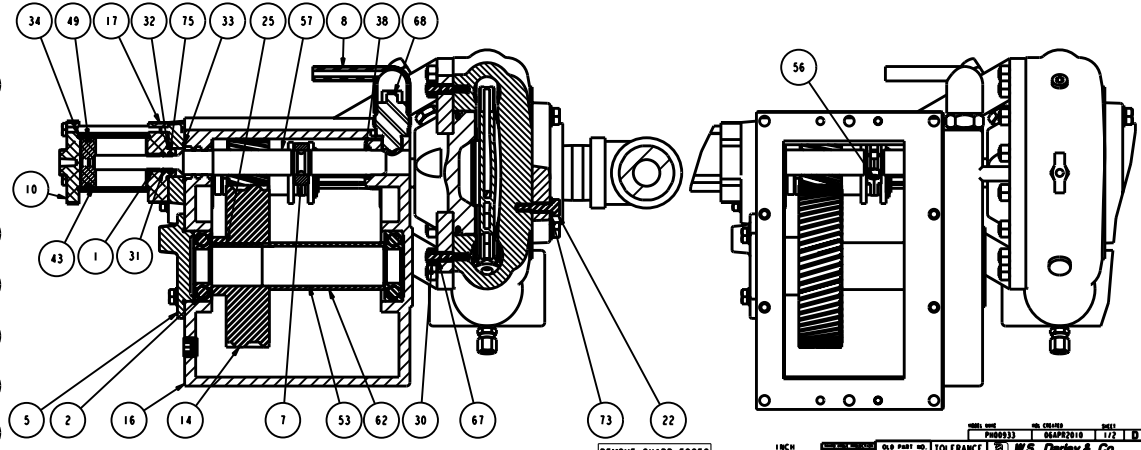
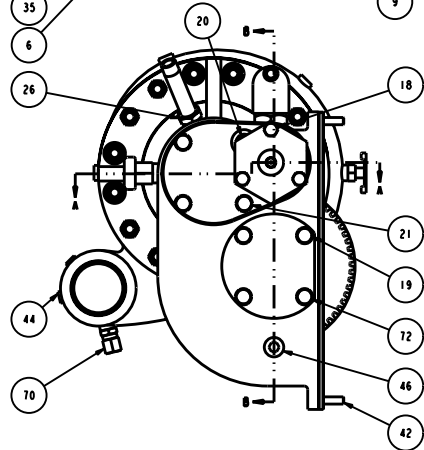
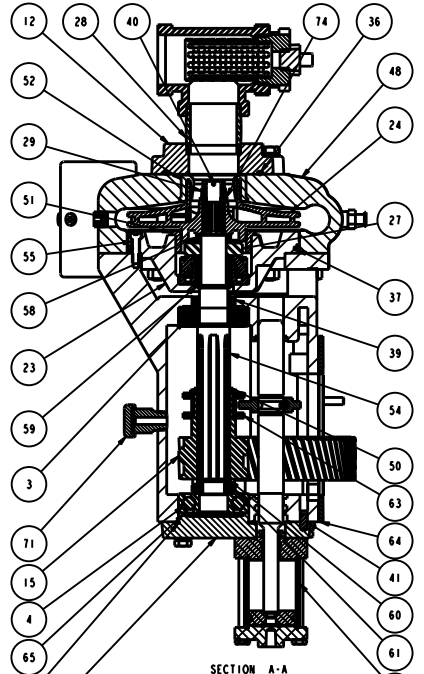


| NO. | DESCRIPTION | PART NO. | QTY. |
|-----|------------------------------------|----------|------|
| 1 | BEARING - OILITE, 0.500 ID | - | 1 |
| 2 | BEARING-BALL, 206SFF | - | 2 |
| 3 | BEARING-BALL, 305SFF | - | 1 |
| 4 | BEARING-BALL, 7305B, MP, UA | - | 1 |
| 5 | CAP - BEARING, KDM | - | 1 |
| 6 | CAP - BEARING, AUX TRANS | - | 1 |
| 7 | COLLAR - SHIFT, KSMC | - | 1 |
| 8 | COVER - SWITCH, AUX, GEARCASE | - | 1 |
| 9 | CYLINDER - 1.75ID x 2.40 LG | - | 1 |
| 10 | CYLINDER END - 1.75 ID | - | 1 |
| 11 | DRAINCOCK - 0.250 NPTM, 9KC BR | - | 1 |
| 12 | FLANGE - 1.5 NPT, O-RING, CDI | - | 1 |
| 13 | GASKET - GEARCASE COVER, LDMH | - | 2 |
| 14 | GEAR - IDLER, PSRH, 63T, 12DP | - | 1 |
| 15 | GEAR - PINION, PSRH, 26T, 12DP | - | 1 |
| 16 | GEARCASE - LDMH | - | 1 |
| 17 | HEAD - CYLINDER, 1.75 ID | - | 1 |
| 18 | HMCS - .250-20 x 4.00, 18-8 | - | 3 |
| 19 | HMCS - .313-18 x 0.75, GR5 | - | 4 |
| 20 | HMCS - .313-18 x 0.88, GR5 | - | 1 |
| 21 | HMCS - .313-18 x 1.25, GR5 | - | 3 |
| 22 | HMCS - .375-16 x 1.25, GR5 | - | 4 |
| 23 | HOUSING - MECHANICAL SEAL, S | - | 1 |
| 24 | IMPELLER - SH, MECH SEAL | - | 1 |
| 25 | KEY - SO., 0.19 x 0.19 x 1.75, GR2 | - | 1 |
| 26 | KEY - FLUSH, MECH SEAL | - | 1 |
| 27 | MECHANICAL SEAL - .875" LSRN | - | 1 |
| 28 | HIPPLE - PIPE, 1.500, CLOSE, BL | - | 1 |
| 29 | NUT - CASTLE, .500-20, 303 | - | 1 |
| 30 | NUT - HEX, .375-16, GR2 | - | 16 |
| 31 | O-RING - 0.50 x 0.69 x 0.09 | - | 1 |
| 32 | O-RING - 1.00 x 1.12 x 0.06 | - | 1 |
| 33 | O-RING - 1.19 x 1.31 x 0.06 | - | 1 |
| 34 | O-RING - 1.75 x 1.88 x 0.06 | - | 2 |
| 35 | O-RING - 2.38 x 2.50 x 0.06 | - | 2 |
| 36 | O-RING - 3.12 x 3.38 x 0.12 | - | 1 |
| 37 | O-RING - 5.63 x 5.88 x 0.12 | - | 1 |
| 38 | OIL SEAL - 0.875 ID x 1.129 OD | - | 1 |
| 39 | OIL SEAL - 0.984 ID x 1.489 OD | - | 1 |
| 40 | PIN - COTTER, .094 x 1.00, SST | - | 1 |
| 41 | PIN - DOWEL, .250 x 0.50, GR8 | - | 1 |
| 42 | PIN - DOWEL, .250 x 1.25, GR8 | - | 2 |
| 43 | PISTON - CYLINDER, 1.75 ID | - | 1 |
| 44 | PLUG - PIPE, 0.125, SST SOC HD | - | 2 |
| 45 | PLUG - PIPE, 0.250, ZINC SOC HD | - | 3 |
| 46 | PLUG - PIPE, 0.375, ZINC SOC HD | - | 1 |
| 47 | PLUG - PIPE, 0.750 SST SO HD | - | 1 |
| 48 | PUMP CASING - KDM/LDM/KSPAH | - | 1 |
| 49 | QUAD RING - 1.50 x 1.75 x 0.12 | - | 1 |
| 50 | RING - RETAINER, 5160-137 | - | 1 |
| 51 | SEAL RING - E, INTERSTAGE | - | 1 |
| 52 | SEAL RING - S/SH | - | 1 |
| 53 | SHAFT - IDLER GEAR, SH | - | 1 |
| 54 | SHAFT - PUMP, 3RD STAGE, S | - | 1 |
| 55 | SHCS - .250-20 x 0.88, SST | - | 6 |
| 56 | SHCS - .250-20 x 1.00, GR8 | - | 1 |
| 57 | SHIFT BAR, WSPH | - | 1 |
| 58 | SLEEVE - LSPH, EXTERNAL | - | 1 |
| 59 | SLEEVE - LSPH, INTERNAL | - | 1 |
| 60 | SPACER - 0.75 x 1.50 x 0.50 | - | 1 |
| 61 | SPACER - 1.26 x 1.50 x 0.30 | - | 1 |
| 62 | SPACER - 1.38 x 1.63 x 3.98 | - | 1 |
| 63 | SPACER - 2ND STAGE PINION | - | 1 |
| 64 | SPACER - PSRH, 1.30 RATIO | - | 1 |
| 65 | SPRING - WAVE, SMALLTAY | - | 1 |
| 66 | STRAINER, 3RD STAGE | - | 1 |
| 67 | STUD - 0.375-16 x 1.500, GR5 | - | 16 |
| 68 | SWITCH - SHIFT INDICATOR, KHMIC | - | 1 |
| 69 | TEE - PIPE, 1.500, BLK | - | 1 |
| 70 | TUBE FITTING - STR, .31 x .25 | - | 1 |
| 71 | VENT - GEARCASE | - | 1 |
| 72 | WASHER - LOCK, 0.313 ID | - | 8 |
| 73 | WASHER - LOCK, 0.315 ID | - | 4 |
| 74 | WASHER - 0.52 x 0.94 x .12 303 | - | 1 |
| 75 | WIPER RING | - | 1 |



| REVISIONS | | | |
|-----------|-------------|------|--------------|
| LTB | DESCRIPTION | DATE | CHG NO. APPR |
| | | | |

REMOVE SHARP EDGES

1 INCH (25.4 MILLIMETER)

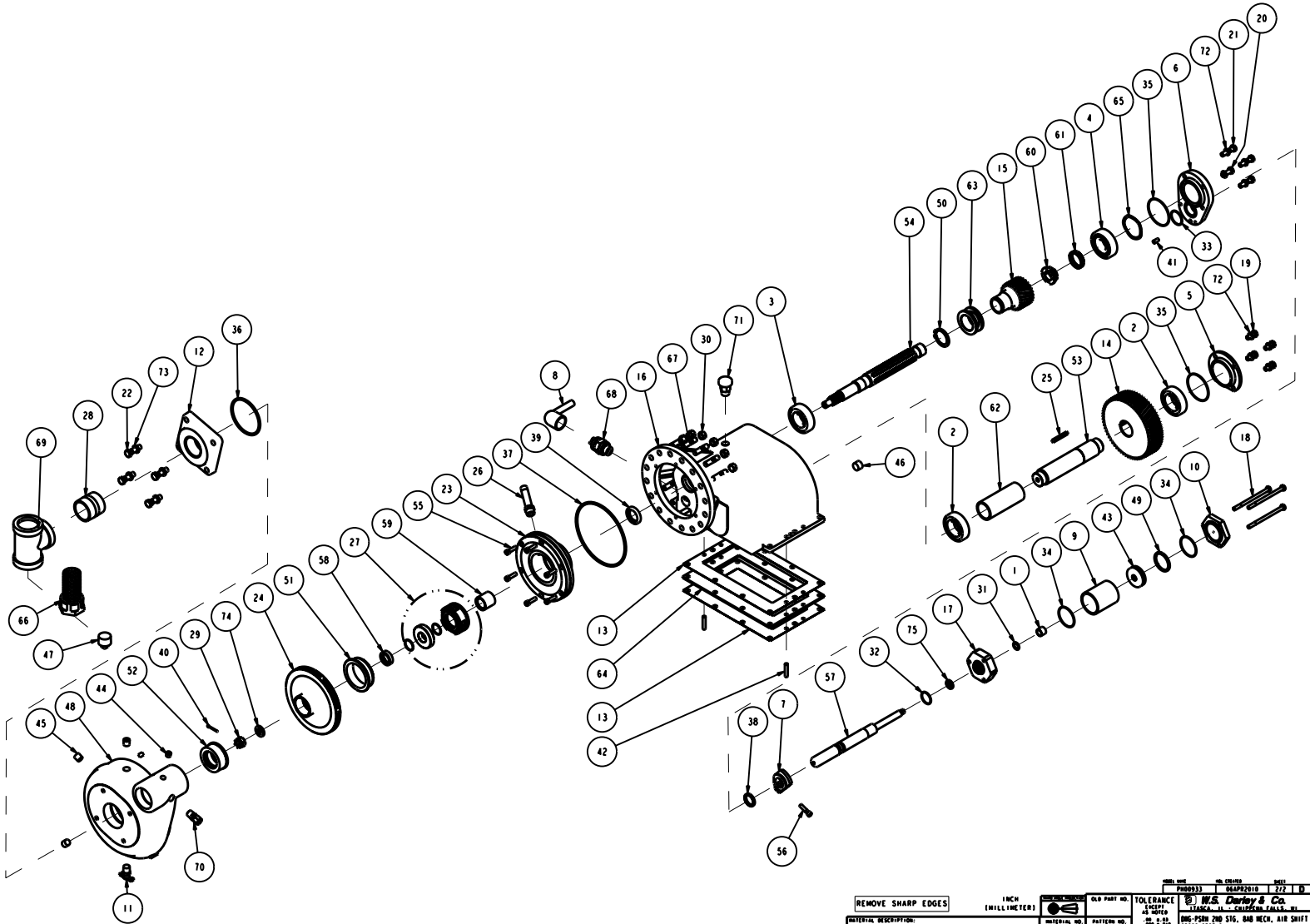
AS LISTED

DATE: 06/18/10

SCALE: 1:1

DLCO117

| NO. | DESCRIPTION | PART NO. | QTY. |
|-----|------------------------------------|----------|------|
| 1 | BEARING - OILITE, 0.500 ID | - | 1 |
| 2 | BEARING-BALL, 206SFF | - | 2 |
| 3 | BEARING-BALL, 305SFF | - | 1 |
| 4 | BEARING-BALL, 7305B,MP,UA | - | 1 |
| 5 | CAP - BEARING, KDM | - | 1 |
| 6 | CAP - BEARING, AUX TRANS | - | 1 |
| 7 | COLLAR - SHIFT, KSMC | - | 1 |
| 8 | COVER - SWITCH, AUX. GEARCASE | - | 1 |
| 9 | CYLINDER - 1.75ID x 2.40 LG | - | 1 |
| 10 | CYLINDER END - 1.75 ID | - | 1 |
| 11 | DRAINCOCK - 0.250 NPTM, 9KC BR | - | 1 |
| 12 | FLANGE - 1.5 NPT, O-RING, CDI | - | 1 |
| 13 | GASKET - GEARCASE COVER, LDMH | - | 2 |
| 14 | GEAR - IDLER, PSRH, 63T, 12DP | - | 1 |
| 15 | GEAR - PINION, PSRH, 26T, 12DP | - | 1 |
| 16 | GEARCASE - LDMH | - | 1 |
| 17 | HEAD - CYLINDER, 1.75 ID | - | 1 |
| 18 | HMCS - .250-20 x 4.00, 18-8 | - | 3 |
| 19 | HMCS - .313-18 x 0.75, GR5 | - | 4 |
| 20 | HMCS - .313-18 x 0.88, GR5 | - | 1 |
| 21 | HMCS - .313-18 x 1.25, GR5 | - | 3 |
| 22 | HMCS - .375-16 x 1.25, GR5 | - | 4 |
| 23 | HOUSING - MECHANICAL SEAL, S | - | 1 |
| 24 | IMPELLER - SH, MECH SEAL | - | 1 |
| 25 | KEY - SO., 0.19 x 0.19 x 1.75, GR2 | - | 1 |
| 26 | KEY - FLUSH, MECH SEAL | - | 1 |
| 27 | MECHANICAL SEAL - .875" LSRH | - | 1 |
| 28 | HIPPLE - PIPE, 1.500, CLOSE, BL | - | 1 |
| 29 | NUT - CASTLE, .500-20, 303 | - | 1 |
| 30 | NUT - HEX, .375-16, GR2 | - | 16 |
| 31 | O-RING - 0.50 x 0.69 x 0.09 | - | 1 |
| 32 | O-RING - 1.00 x 1.12 x 0.06 | - | 1 |
| 33 | O-RING - 1.19 x 1.31 x 0.06 | - | 1 |
| 34 | O-RING - 1.75 x 1.88 x 0.06 | - | 2 |
| 35 | O-RING - 2.38 x 2.50 x 0.06 | - | 2 |
| 36 | O-RING - 3.12 x 3.38 x 0.12 | - | 1 |
| 37 | O-RING - 5.63 x 5.88 x 0.12 | - | 1 |
| 38 | OIL SEAL - 0.875 ID x 1.129 OD | - | 1 |
| 39 | OIL SEAL - 0.984 ID x 1.489 OD | - | 1 |
| 40 | PIN - COTTER, .094 x 1.00, SST | - | 1 |
| 41 | PIN - DOMEL, .250 x 0.50, GR8 | - | 1 |
| 42 | PIN - DOMEL, .250 x 1.25, GR8 | - | 2 |
| 43 | PISTON - CYLINDER, 1.75 ID | - | 1 |
| 44 | PLUG - PIPE, 0.125, SST SOC HD | - | 2 |
| 45 | PLUG - PIPE, 0.250, ZINC SOC HD | - | 3 |
| 46 | PLUG - PIPE, 0.375, ZN SOC HD | - | 1 |
| 47 | PLUG - PIPE, 0.750 SST SO HD | - | 1 |
| 48 | PUMP CASING - KDM/LDM/KSPAH | - | 1 |
| 49 | QUAD RING - 1.50 x 1.75 x 0.12 | - | 1 |
| 50 | RING - RETAINER, 516G-137 | - | 1 |
| 51 | SEAL RING - E, INTERSTAGE | - | 1 |
| 52 | SEAL RING - S/SH | - | 1 |
| 53 | SHAFT - IDLER GEAR, SH | - | 1 |
| 54 | SHAFT - PUMP, 3RD STAGE, S | - | 1 |
| 55 | SHCS - .250-20 x 0.88, SST | - | 6 |
| 56 | SHCS - .250-20 x 1.00, GR8 | - | 1 |
| 57 | SHIFT BAR, NSPH | - | 1 |
| 58 | SLEEVE - LSPH, EXTERNAL | - | 1 |
| 59 | SLEEVE - LSPH, INTERNAL | - | 1 |
| 60 | SPACER - 0.75 x 1.50 x 0.50 | - | 1 |
| 61 | SPACER - 1.26 x 1.50 x 0.30 | - | 1 |
| 62 | SPACER - 1.38 x 1.63 x 3.98 | - | 1 |
| 63 | SPACER - 2ND STAGE PINION | - | 1 |
| 64 | SPACER - PSRH, 1.30 RATIO | - | 1 |
| 65 | SPRING - WAVE, SMALLT | - | 1 |
| 66 | STRAINER, 3RD STAGE | - | 1 |
| 67 | STUD - 0.375-16 x 1.500, GR5 | - | 16 |
| 68 | SWITCH - SHIFT INDICATOR, RHMC | - | 1 |
| 69 | TEE - PIPE, 1.500, BLK | - | 1 |
| 70 | TUBE FITTING - STR, .31 x .25 | - | 1 |
| 71 | VENT - GEARCASE | - | 1 |
| 72 | WASHER - LOCK, 0.313 ID | - | 8 |
| 73 | WASHER - LOCK, 0.375 ID | - | 4 |
| 74 | WASHER - 0.52 x 0.94 x .12 303 | - | 1 |
| 75 | WIPER RING | - | 1 |



| REVISIONS | | | |
|-----------|-------------|------|--------------|
| LTB | DESCRIPTION | DATE | CHG NO. APPR |
| | | | |

REMOVE SHARP EDGES

1 INCH (25.4 MILLIMETER)

AS LISTED

DATE: 06/18/2010

SCALE: 1:1

DLCO117

U.S. DURYAY & Co.

1724