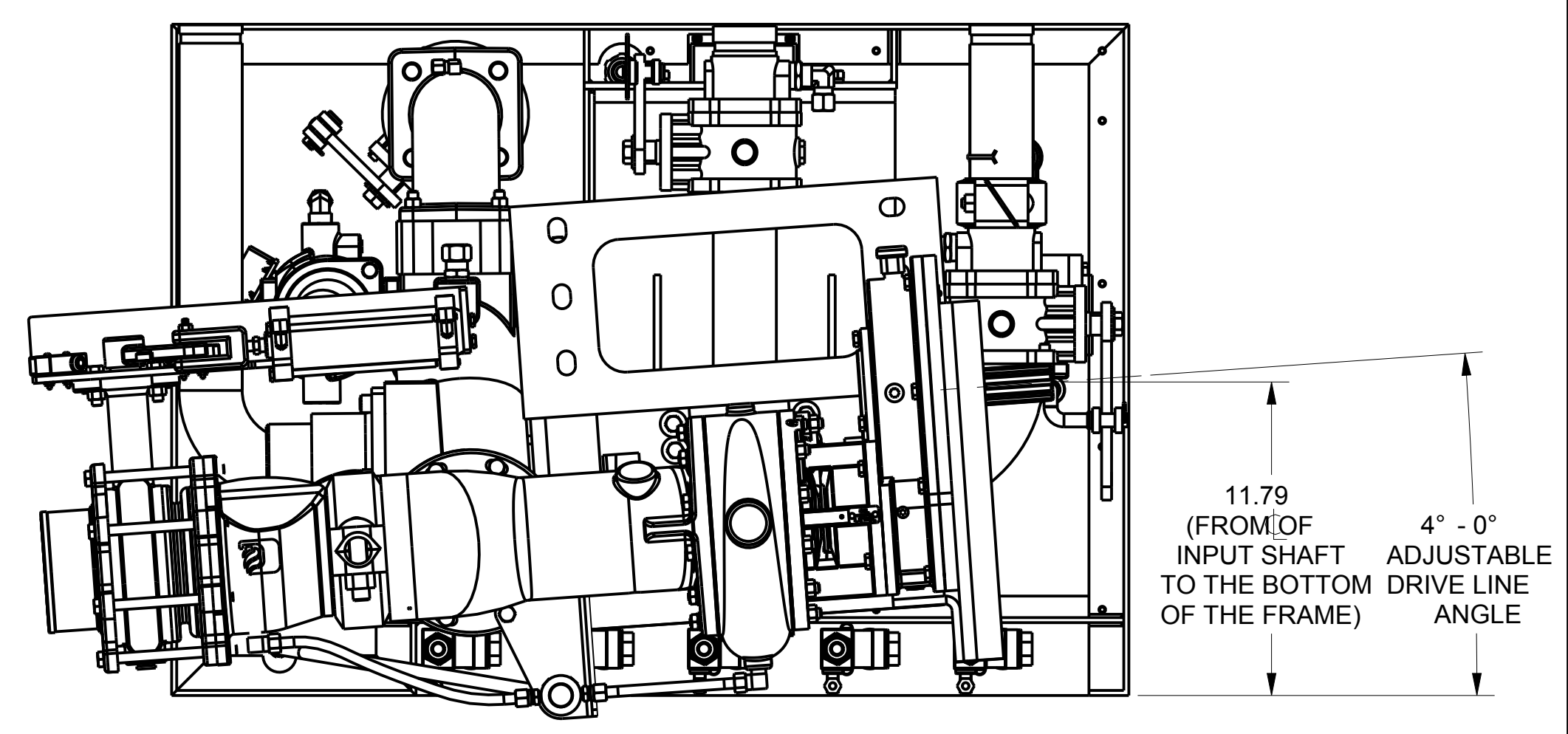
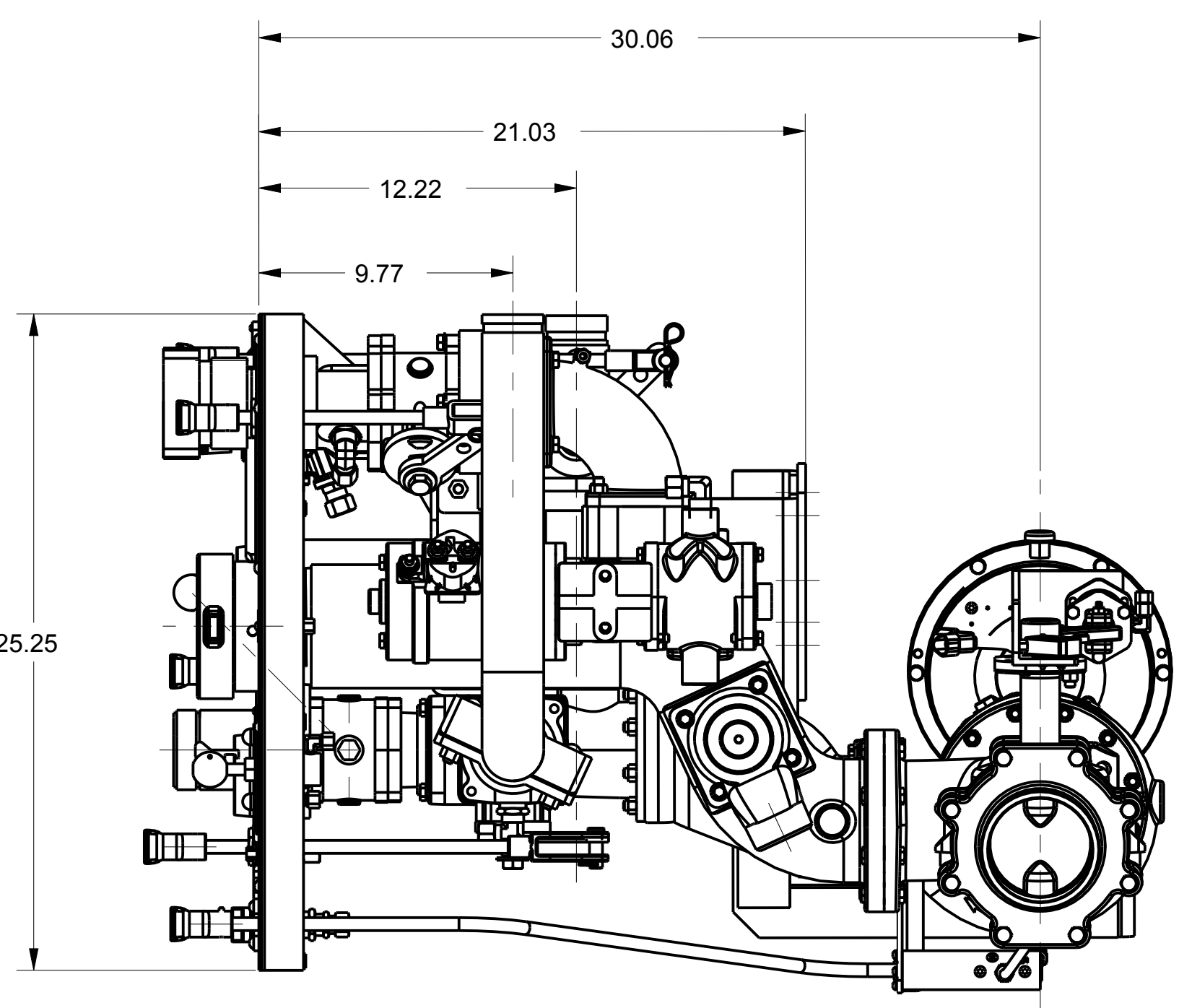
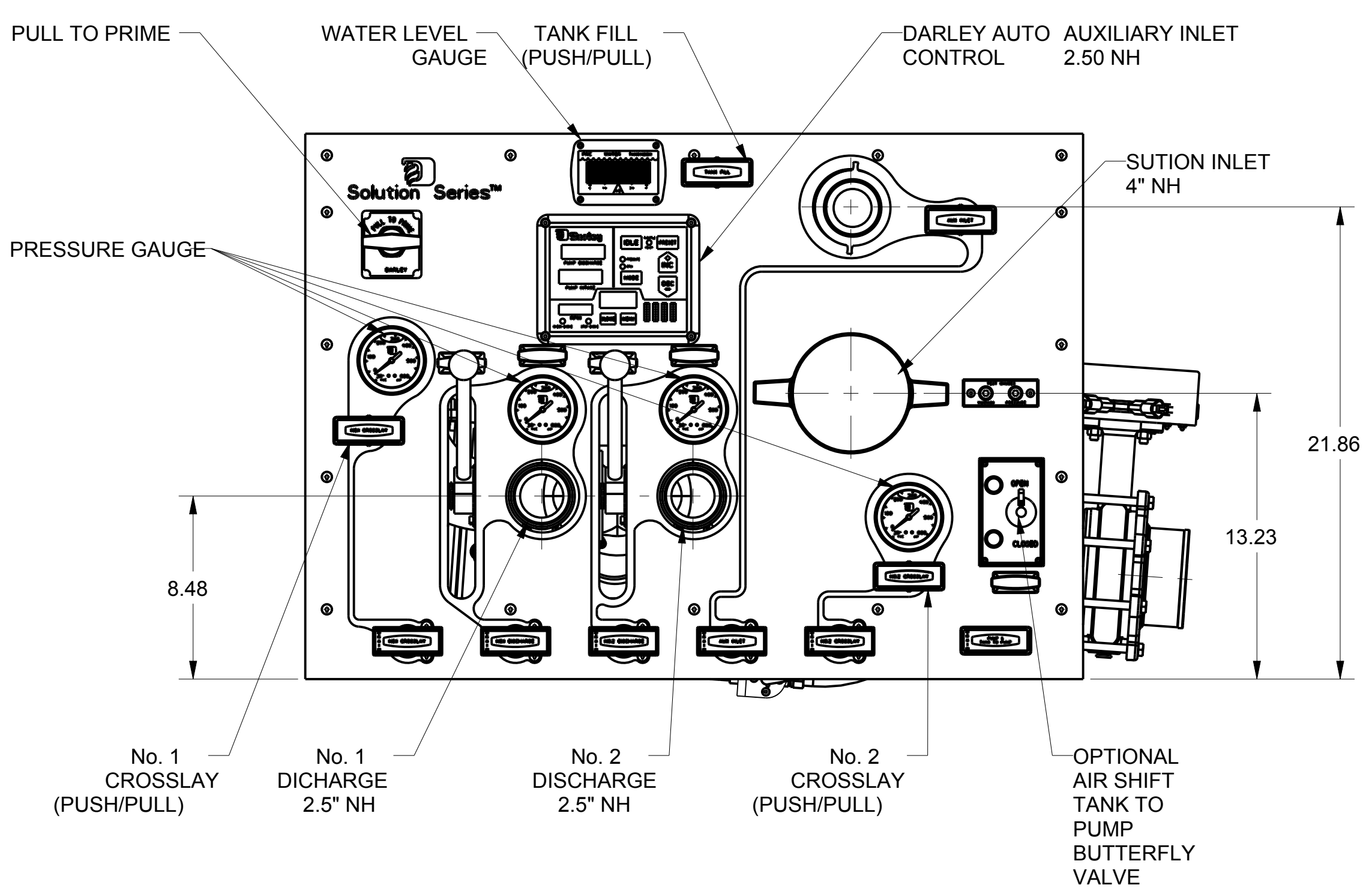
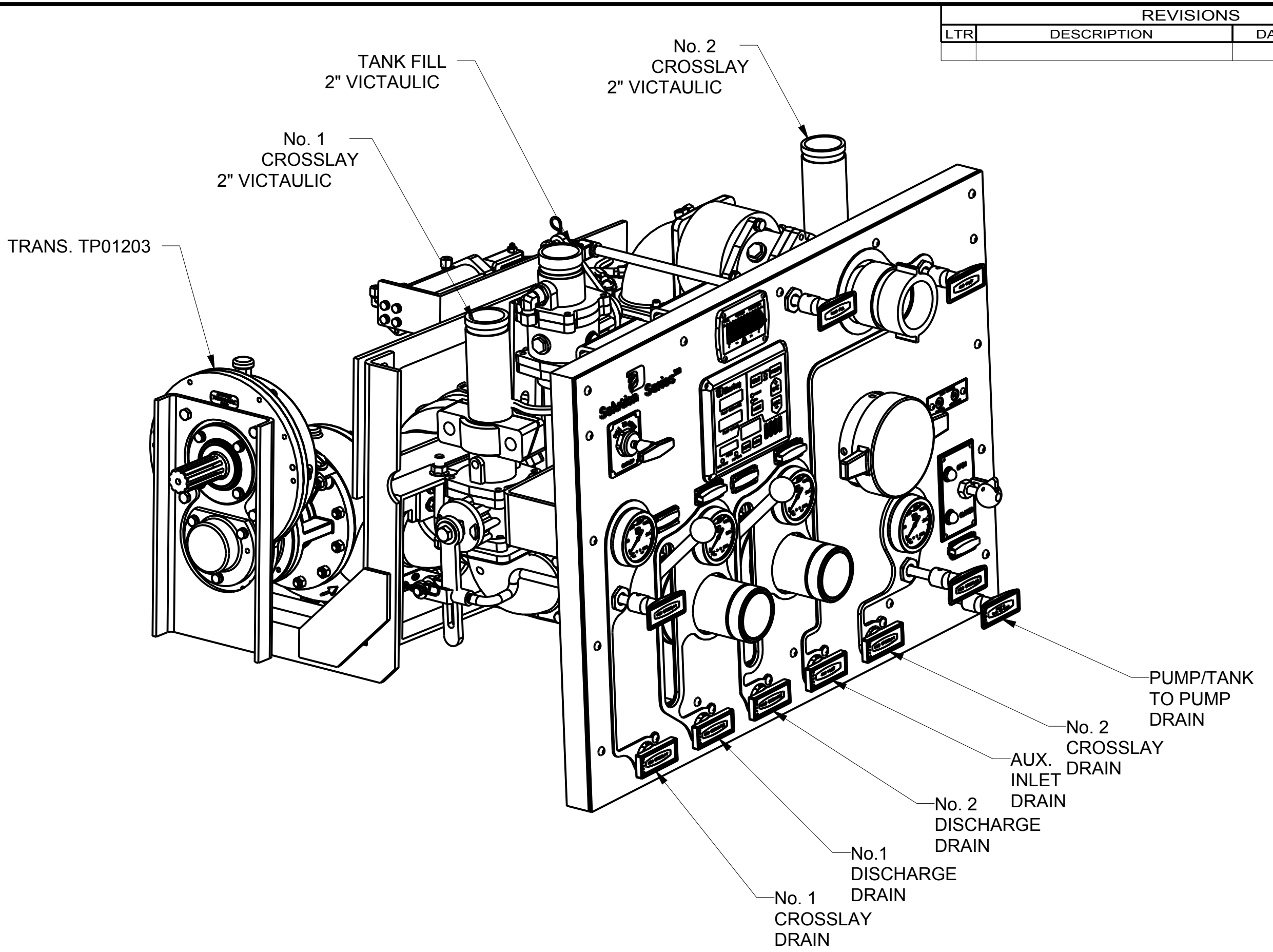
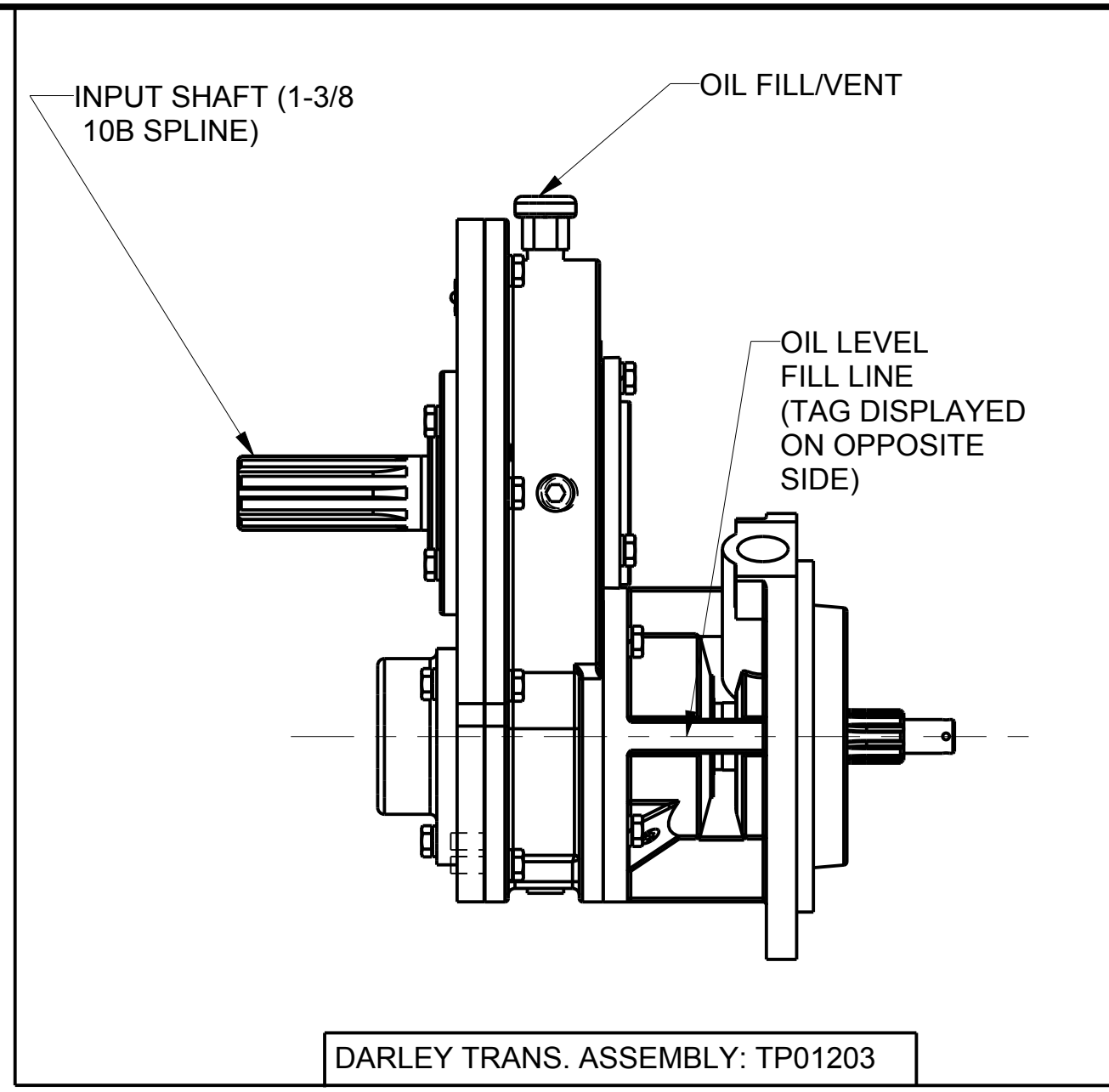
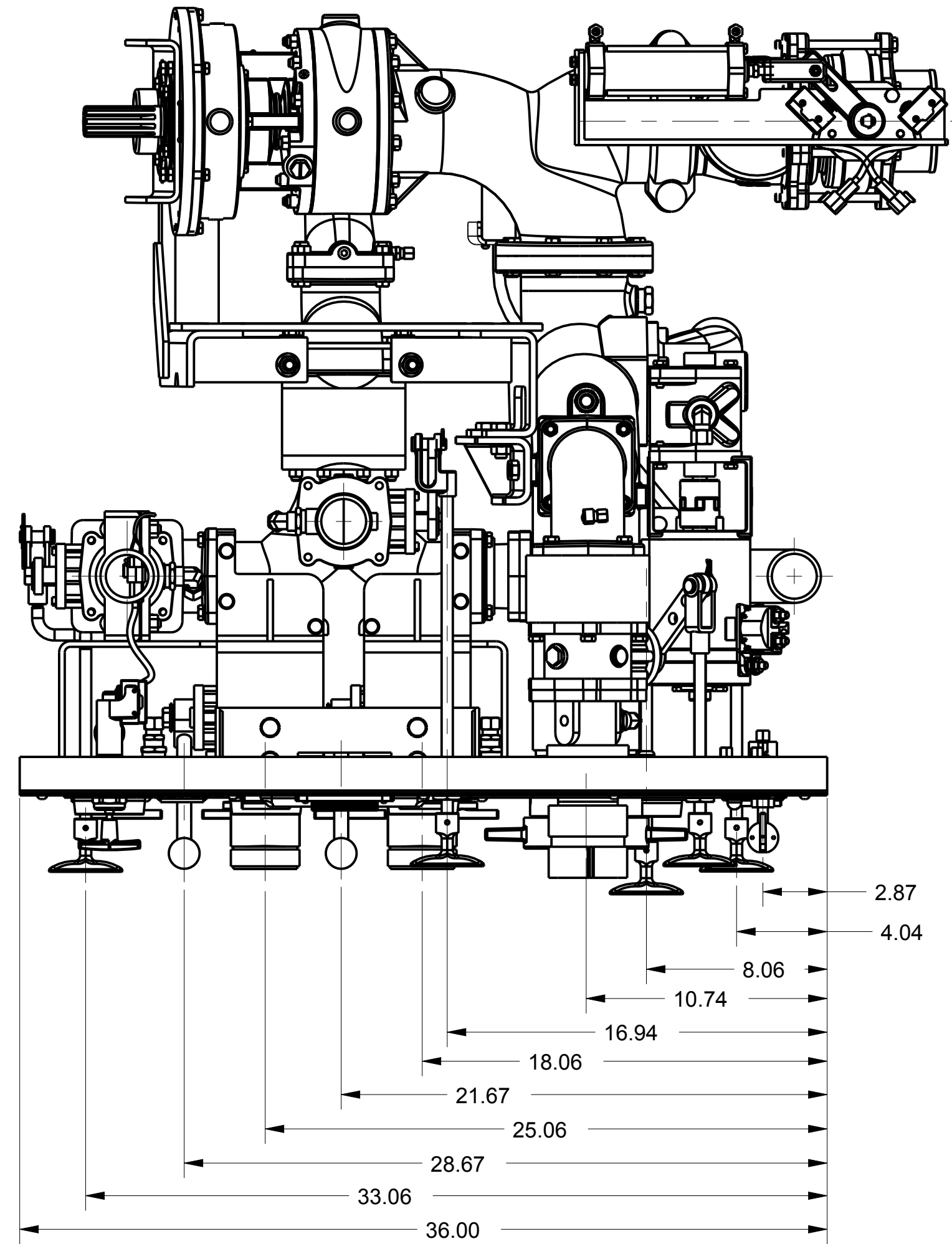


REVISIONS			
LTR	DESCRIPTION	DATE	CHG NO. APPRD

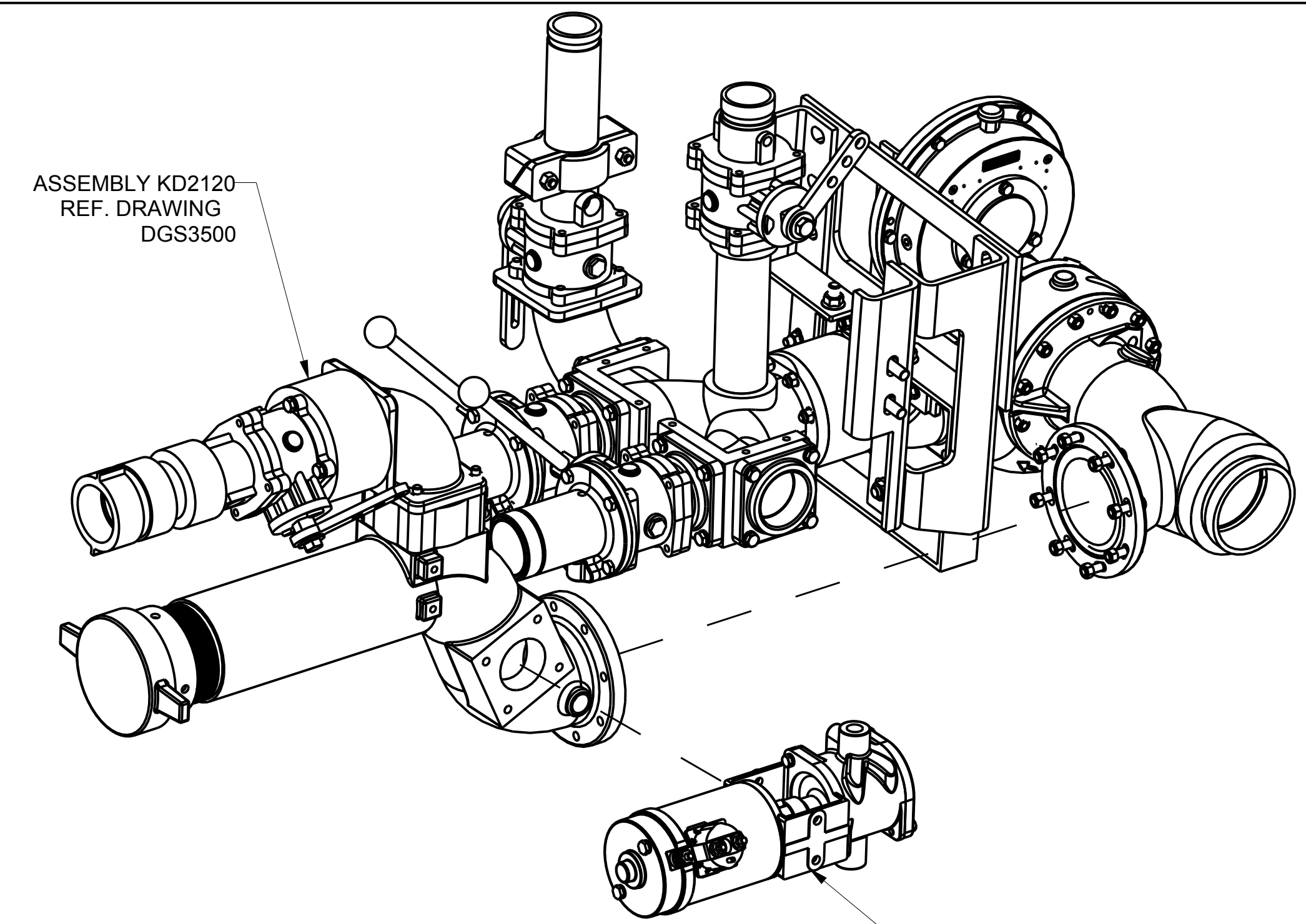
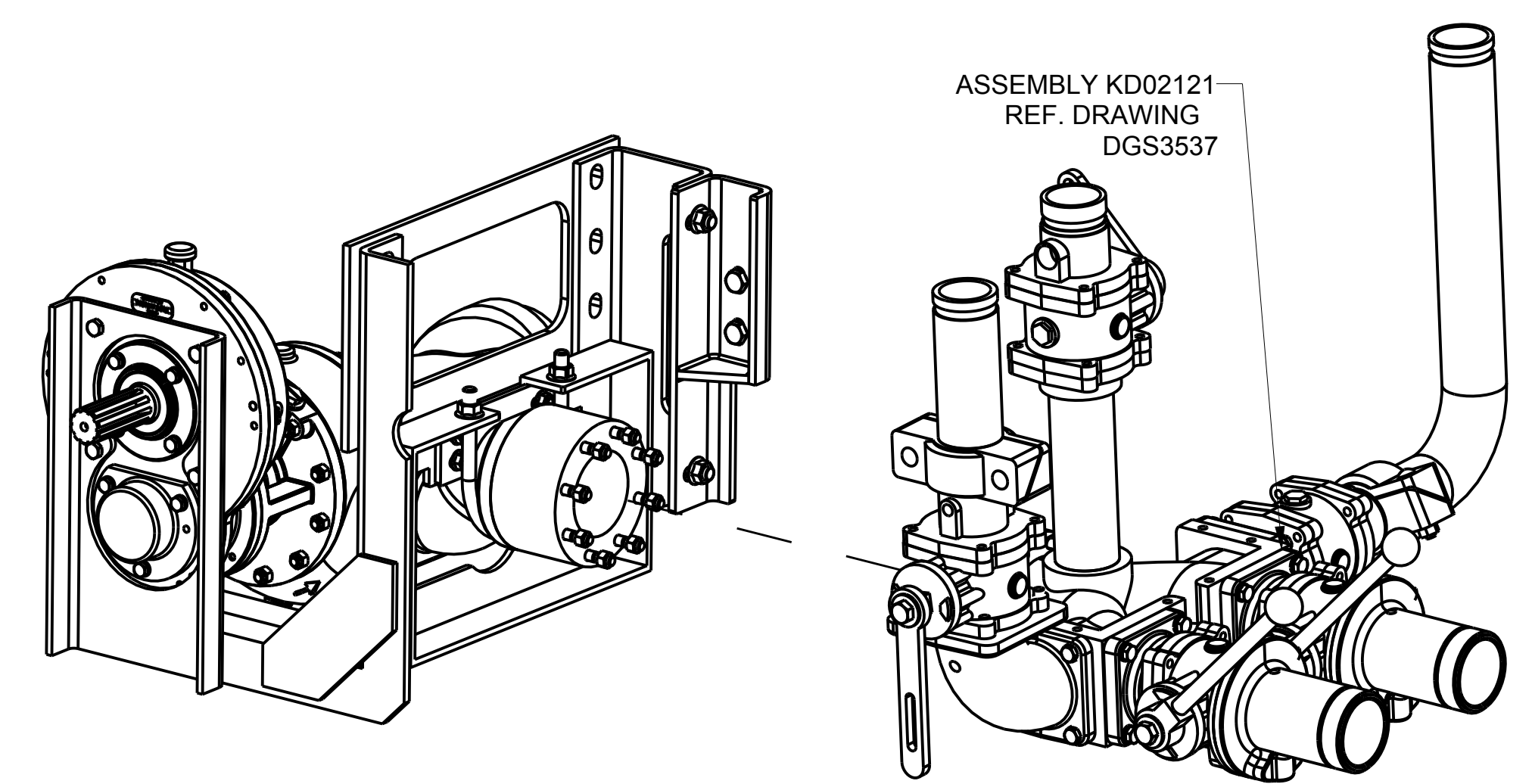
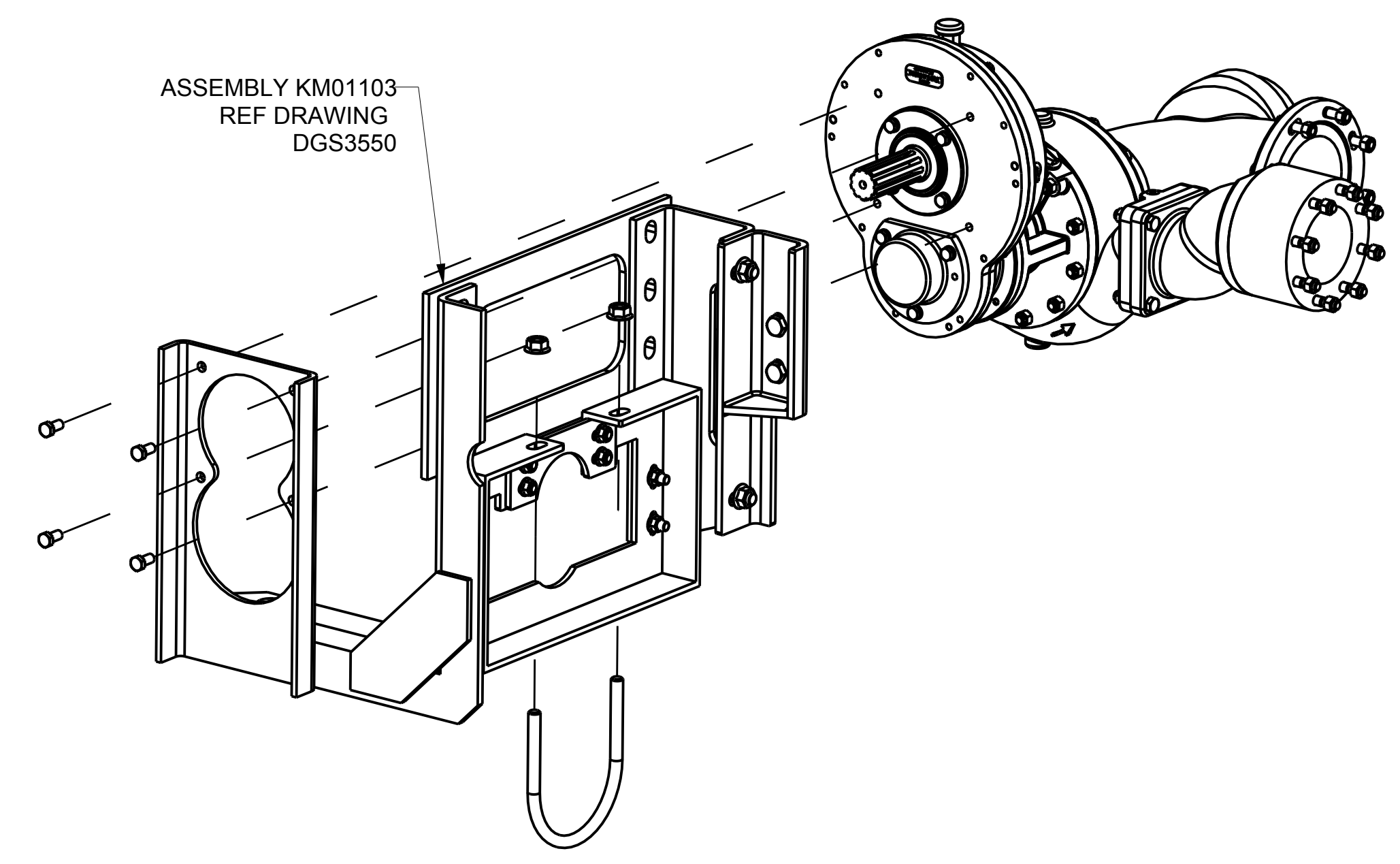
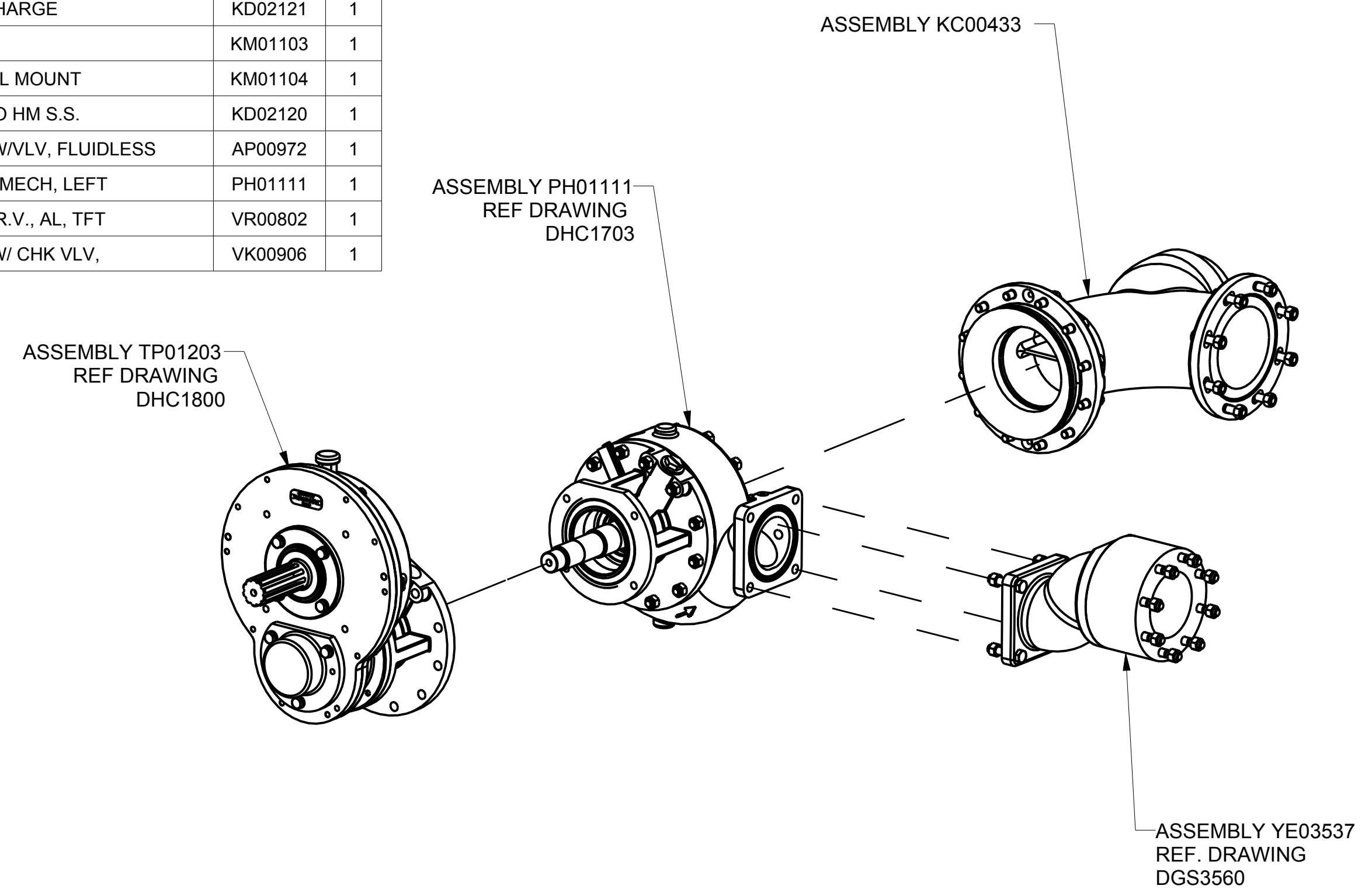


REMOVE SHARP EDGES		INCH (MILLIMETER)	OLD PART NO.	TOLERANCE EXCEPT AS NOTED	W.S. Darley & Co. ITASCA, IL - CHIPPEWA FALLS, WI
MATERIAL DESCRIPTION:	MATERIAL NO.	PATTERN NO.	00 ±.03 2000 ±.010 ANGLES ±.1°	DWG - HM500 SOLUTION SERIES 38" FROM PANEL TO CENTER OF FRAME	DATE 17-Jul-12
THIS DESIGN IS THE PROPERTY OF W.S. DARLEY AND CO. - UNAUTHORIZED REPRODUCTION IS PROHIBITED	ALL DIMENSIONS IN INCHES UNLESS NOTED	DO NOT SCALE PRINT	DRN KMD CHKD TED TRCD	SCALE 3/16	DHD2915

MODEL NAME: DHD2915
 MDL CREATED: 7/10/12
 SHEET: 1/3 D

NO.	DESCRIPTION	PART NO.	QTY.
1	ANODE - MAGNESIUM, .75NPT X 4.00	4419500	1
2	ASSY - PANEL, HM S.S.	AC01701	1
3	ASSY - SUCTION ELBOW	KC00433	1
4	ASSY - DIS. S, 3115100	YE03537	1
5	HM TRANS, 1-3/8 10B SPLINE SLIP	TP01203	1
6	KIT - HM S.S. DISCHARGE	KD02121	1
7	KIT - HM S.S. MTG	KM01103	1
8	KIT - HM S.S. PANEL MOUNT	KM01104	1
9	KIT - DEDICATED TO HM S.S.	KD02120	1
10	PRIMER - KIT 12V W/VLV, FLUIDLESS	AP00972	1
11	PUMP - HM/HF/HE, MECH, LEFT	PH01111	1
12	VALVE - 2.5 INLET R.V., AL, TFT	VR00802	1
13	VALVE - 4.00" BFV W/ CHK VLV,	VK00906	1

REVISIONS				
LTR	DESCRIPTION	DATE	CHG NO.	APPRD



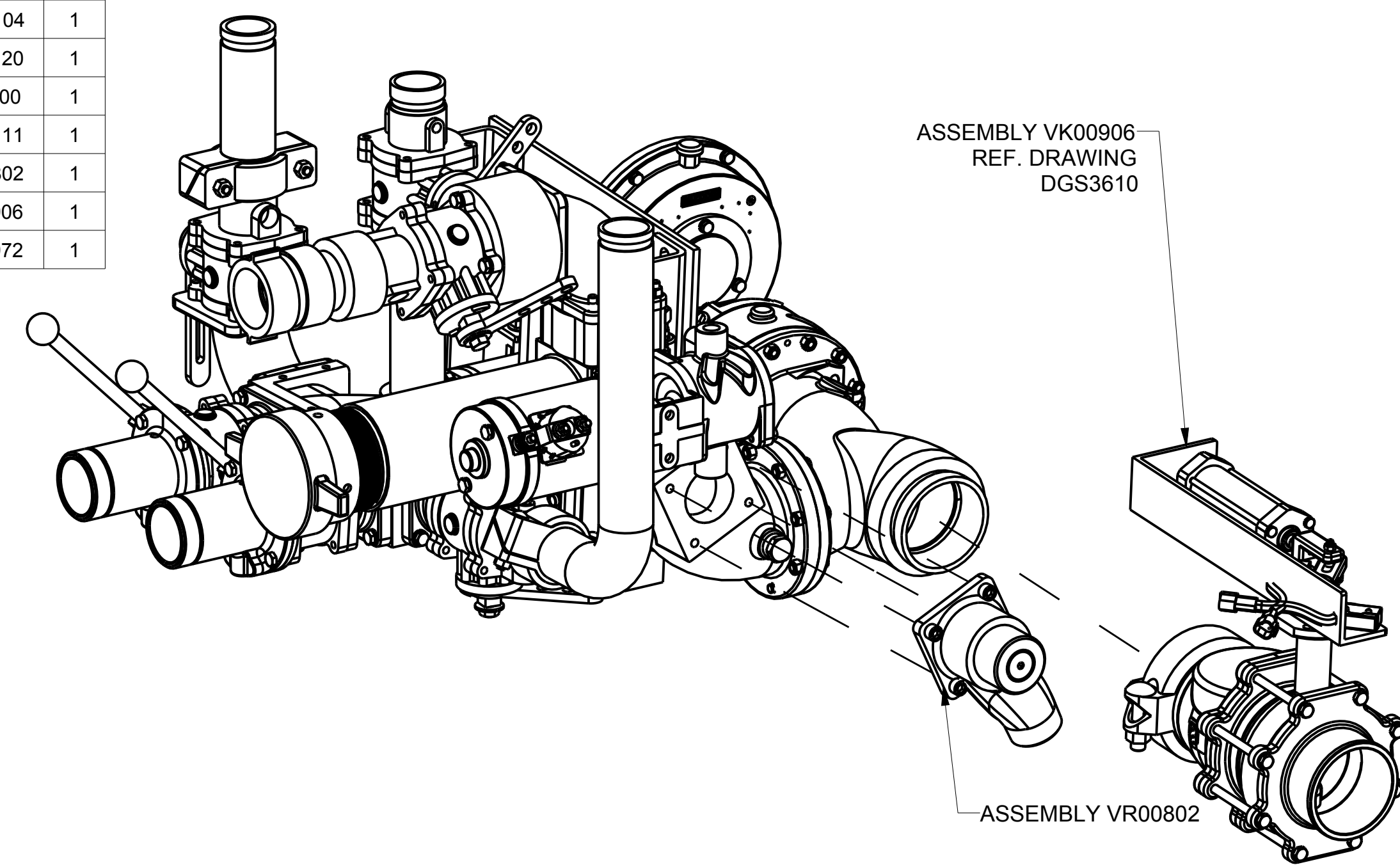
NOTE:
90° ELBOW, VICTAULIC, AND VALVE
HAVE BEEN REMOVED FROM VIEW
TO IMPROVE CLARITY

REMOVE SHARP EDGES		INCH (MILLIMETER)	OLD PART NO.	TOLERANCE EXCEPT AS NOTED 00 ±.03 2000 ±.010 ANGLES ±1°	W.S. Darley & Co. ITASCA, IL - CHIPPEWA FALLS, WI
MATERIAL DESCRIPTION:		MATERIAL NO.	PATTERN NO.	DWG - HM500 SOLUTION SERIES 38" FROM PANEL TO CENTER OF FRAME	DATE 07-Aug-12
THIS DESIGN IS THE PROPERTY OF W.S. DARLEY AND CO. - UNAUTHORIZED REPRODUCTION IS PROHIBITED		DO NOT SCALE PRINT		DRN KMD CHKD TRCD	SCALE 3/16

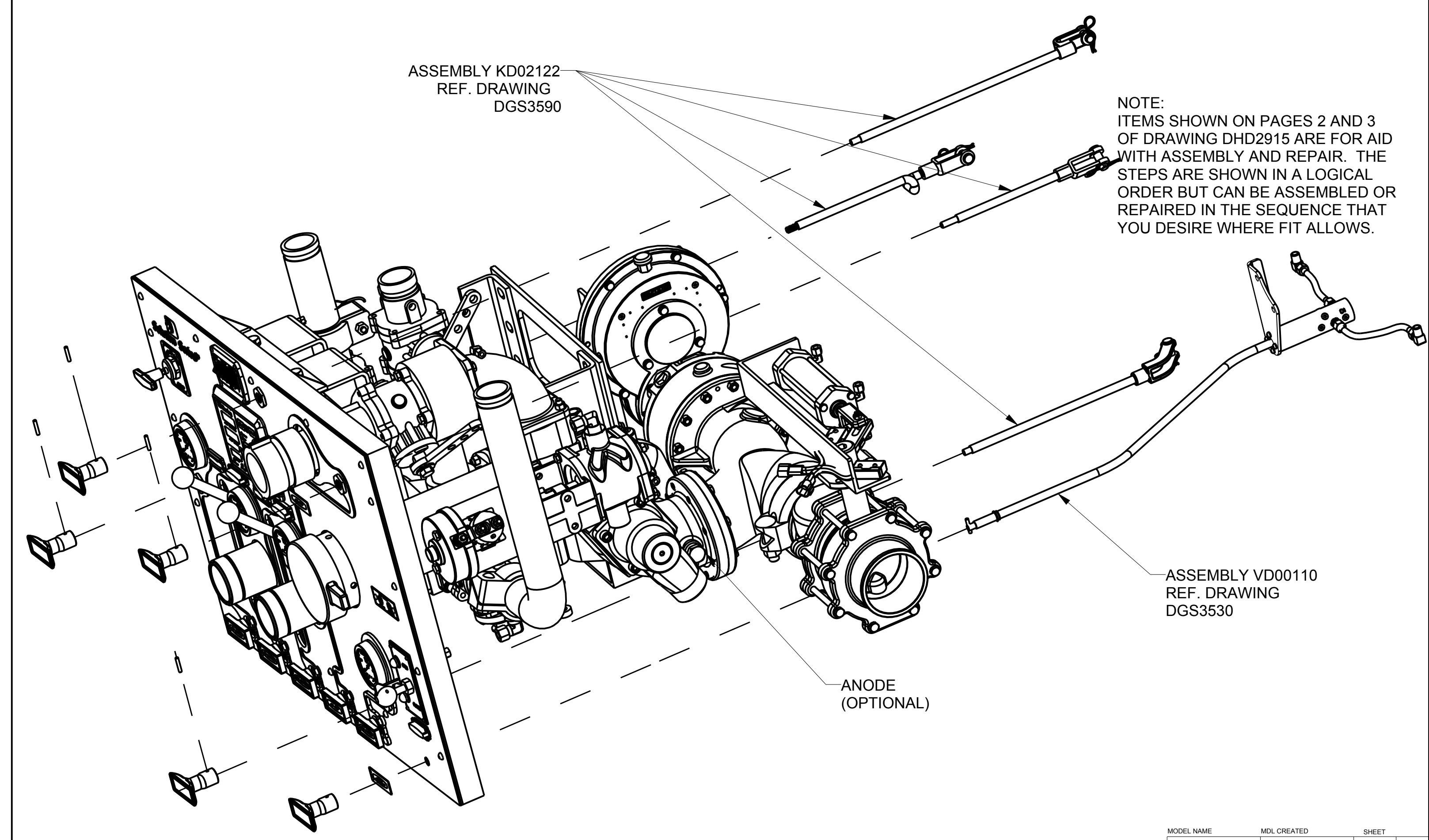
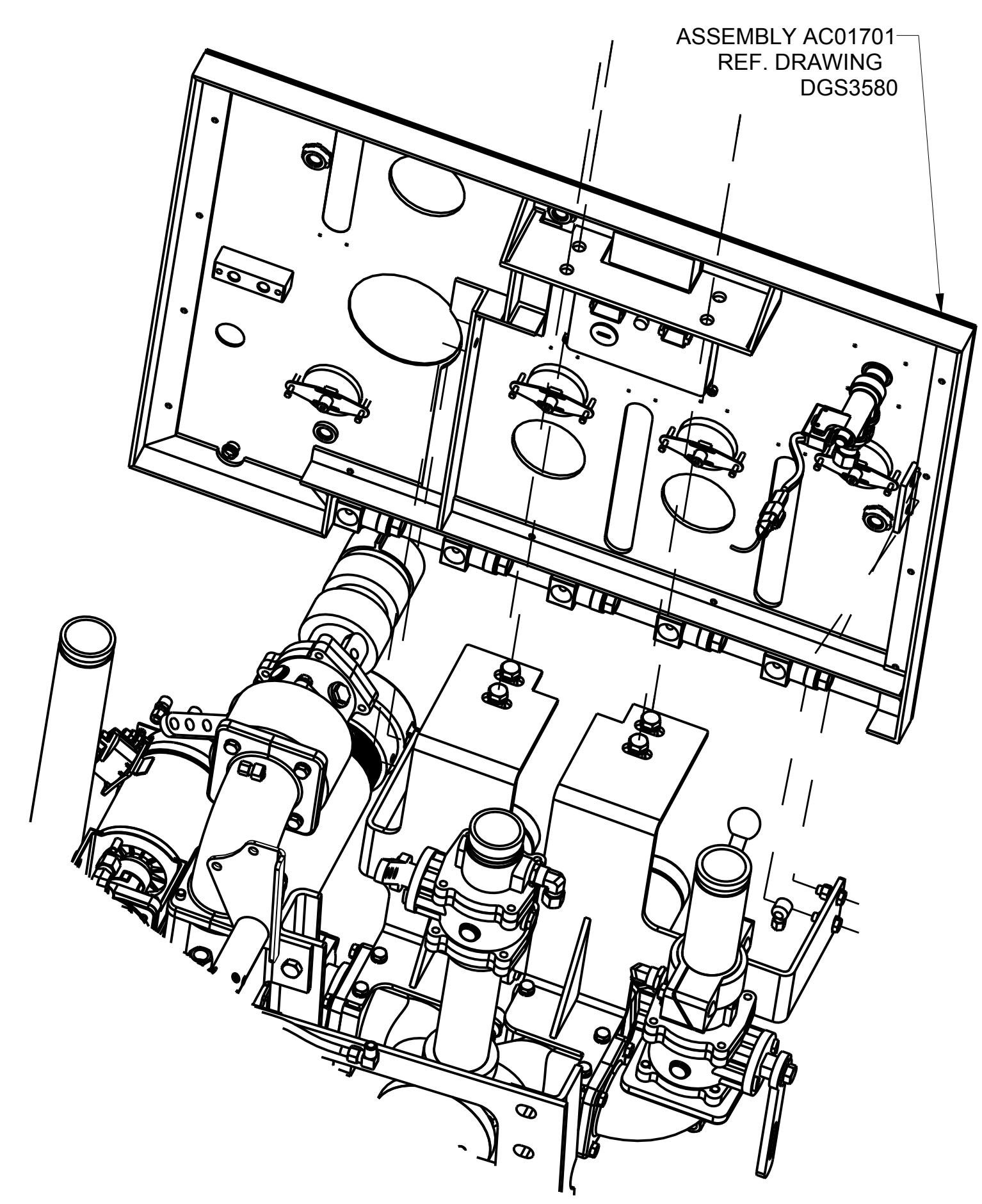
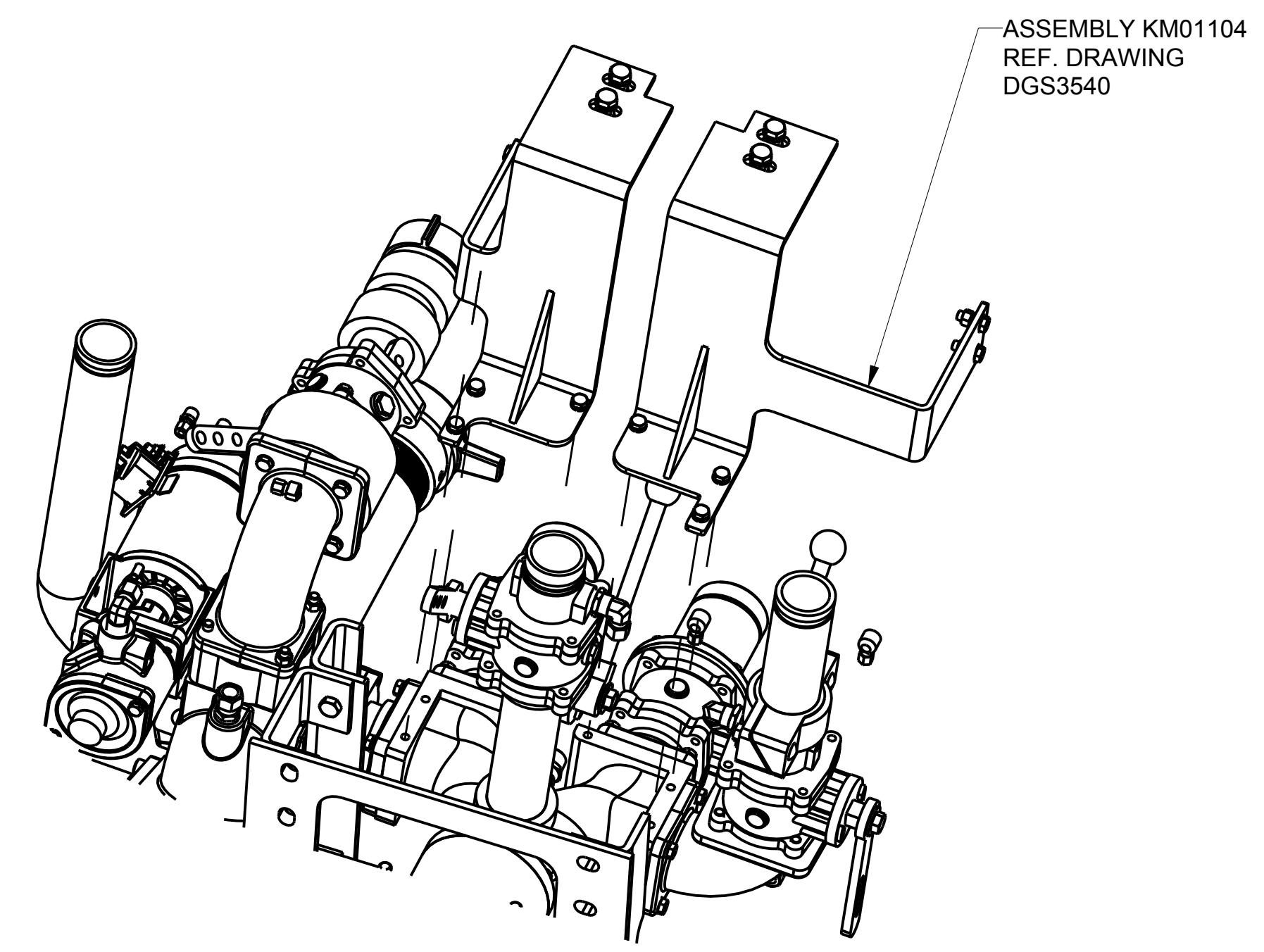
MODEL NAME	MDL CREATED	SHEET
DHD2915	7/10/12	2/3 D

DHD2915

NO.	DESCRIPTION	PART NO.	QTY.
1	ASSY - PANEL, HM S.S.	AC01701	1
2	ASSY - SUCTION ELBOW	KC00433	1
3	ASSY - DIS. S. 3115100	YE03537	1
4	HM TRANS, 1-3/8 10B SPLINE SLIP	TP01203	1
5	KIT - HM S.S. DISCHARGE	KD02121	1
6	KIT - HM S.S. MTG	KM01103	1
7	KIT - HM S.S. PANEL MOUNT	KM01104	1
8	KIT - DEDICATED TO HM S.S.	KD02120	1
9	ANODE - MAGNESIUM, .75NPT X 4.00	4419500	1
10	PUMP - HM/HF/HE, MECH, LEFT	PH01111	1
11	VALVE - 2.5 INLET R.V., AL, TFT	VR00802	1
12	VALVE - 4.00" BFV W/ CHK VLV,	VK00906	1
13	PRIMER - KIT 12V W/VLV, FLUIDLESS	AP00972	1



REVISIONS				
LTR	DESCRIPTION	DATE	CHG NO.	APPRD



REMOVE SHARP EDGES		INCH (MILLIMETER)	OLD PART NO.	TOLERANCE EXCEPT AS NOTED	W.S. Darley & Co. ITASCA, IL - CHIPPEWA FALLS, WI
MATERIAL DESCRIPTION:	MATERIAL NO.	PATTERN NO.	DRN KMD	DATE 17-Sep-12	DWG - HM500 SOLUTION SERIES 38" FROM PANEL TO CENTER OF FRAME
THIS DESIGN IS THE PROPERTY OF W.S. DARLEY AND CO. - UNAUTHORIZED REPRODUCTION IS PROHIBITED	ALL DIMENSIONS IN INCHES UNLESS NOTED	DO NOT SCALE PRINT	CHKD	SCALE 3/16	DHD2915