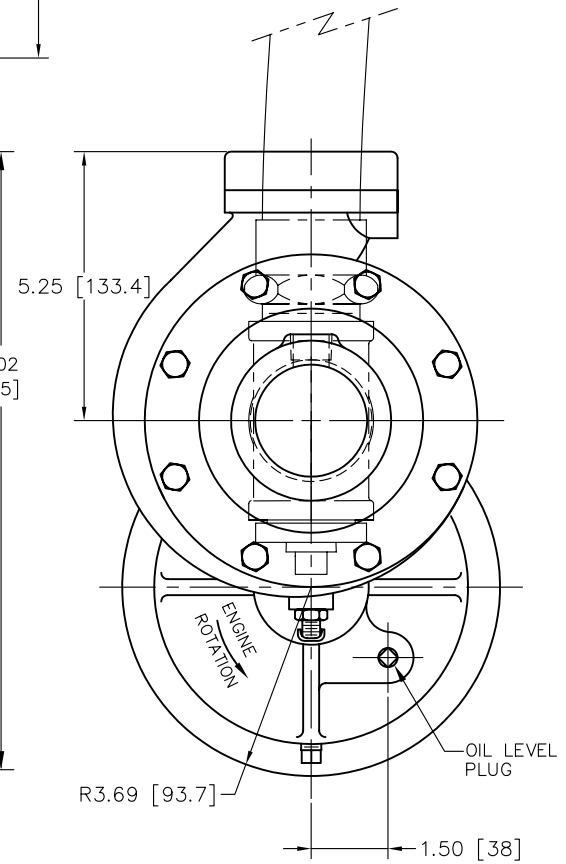
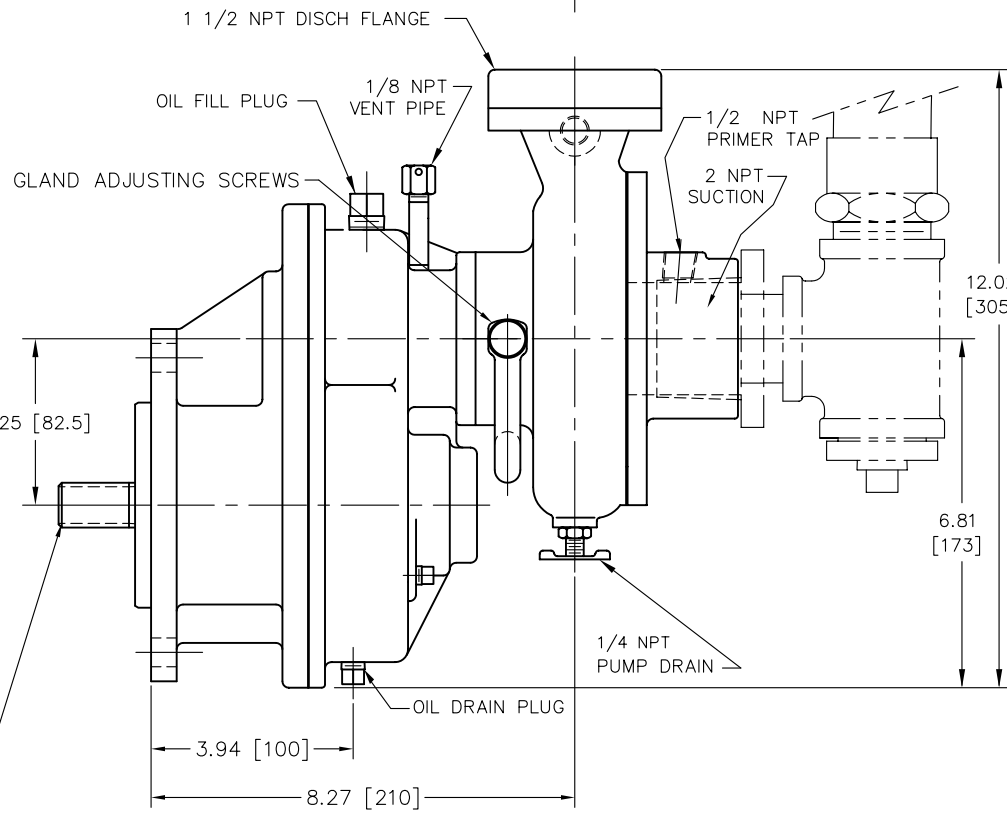
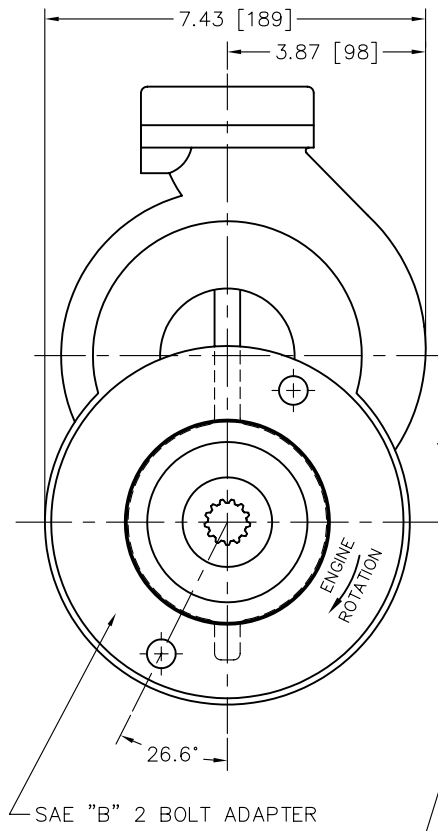
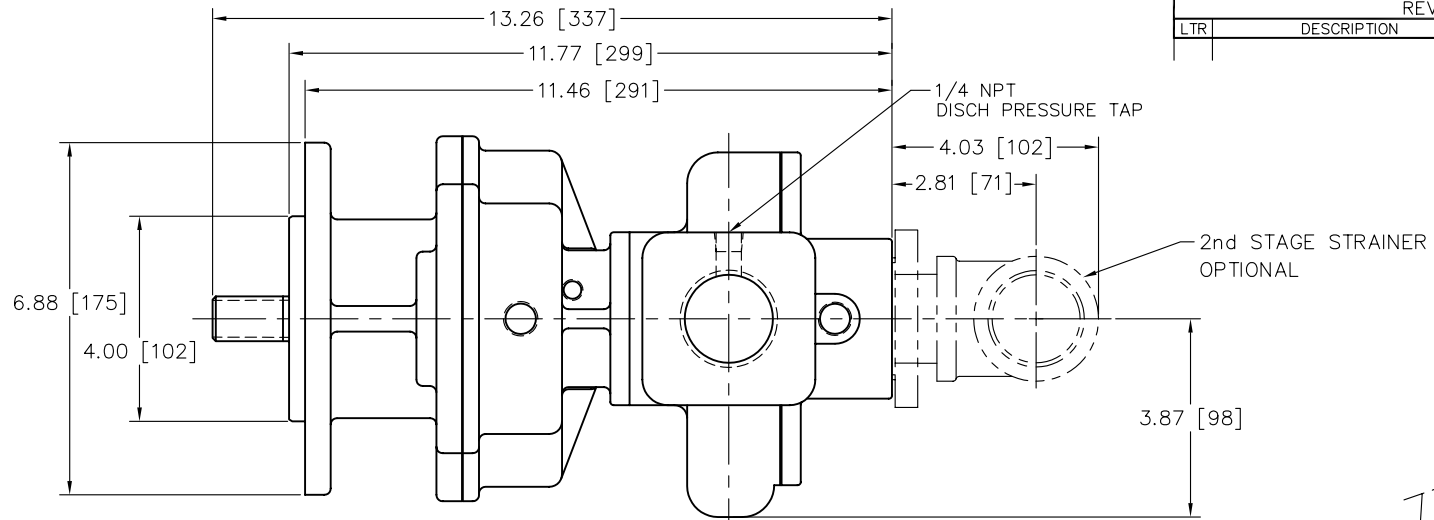


REVISIONS				
LTR	DESCRIPTION	DATE	CHG. NO.	APPR'D



13 T 16/32 INVOLUTE SPLINE
30° FILLET ROOT SIDE FIT
1.38 FULL SPLINE

APPROX. WEIGHT 48 LBS. [22 KG.]	MATERIAL NO. -	PATTERN NO. -	OLD PART NO. A663-1	TOLERANCE EXCEPT AS NOTED .00 ±.03 .000 ±.010 ANGLES ±1°	 W.S. DARLEY & Co. MELROSE PARK, IL - CHIPPEWA FALLS, WI
THIS DESIGN IS THE PROPERTY OF W.S. DARLEY AND CO. - UNAUTHORIZED REPRODUCTION IS PROHIBITED	ALL DIMENSIONS IN INCHES UNLESS NOTED	DO NOT SCALE PRINT	DR'N DWS/TED CHKD TRCD	DATE AUG17,95 SCALE 1/2	 THIRD ANGLE PROJECTION

DAD0901