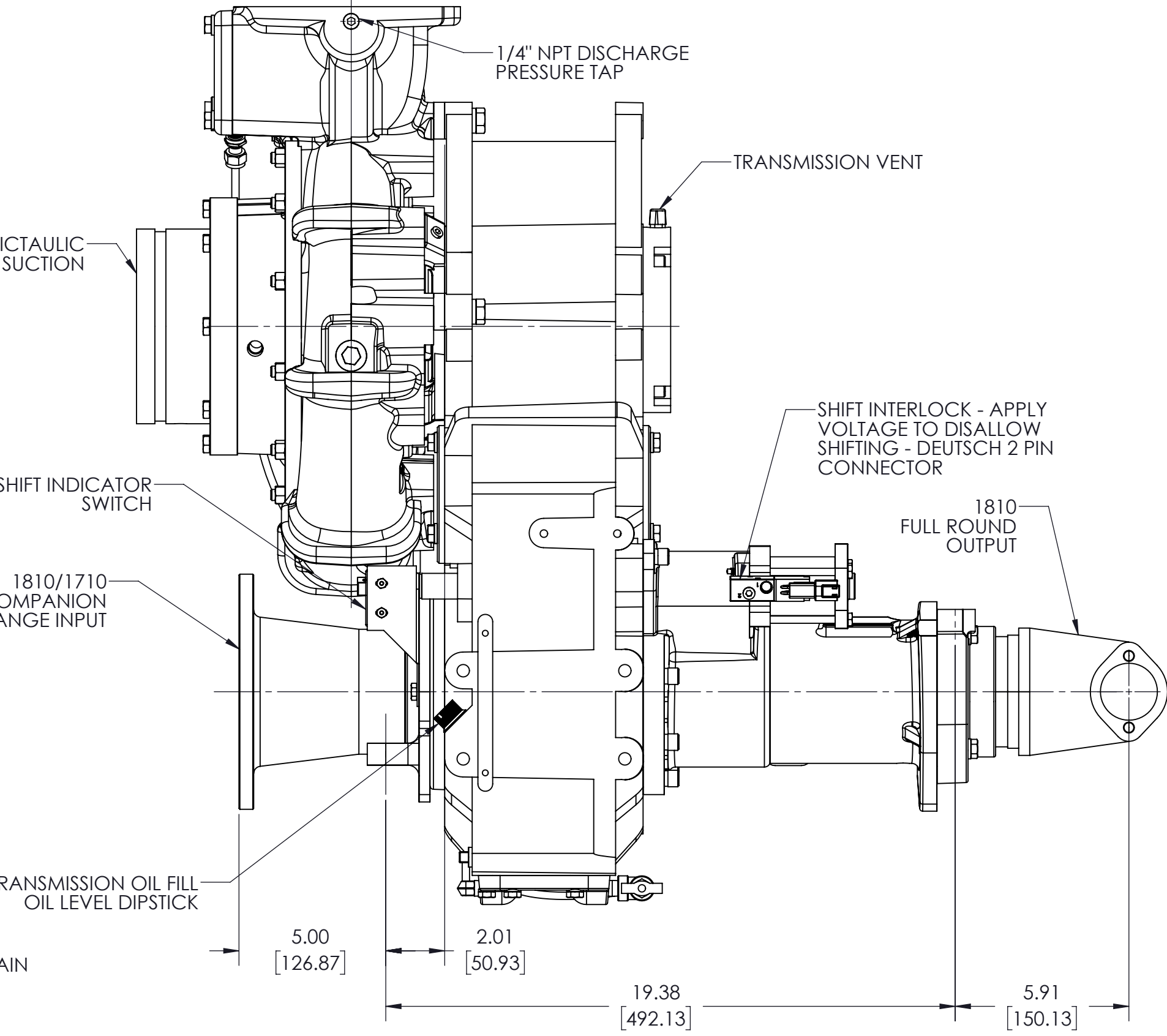
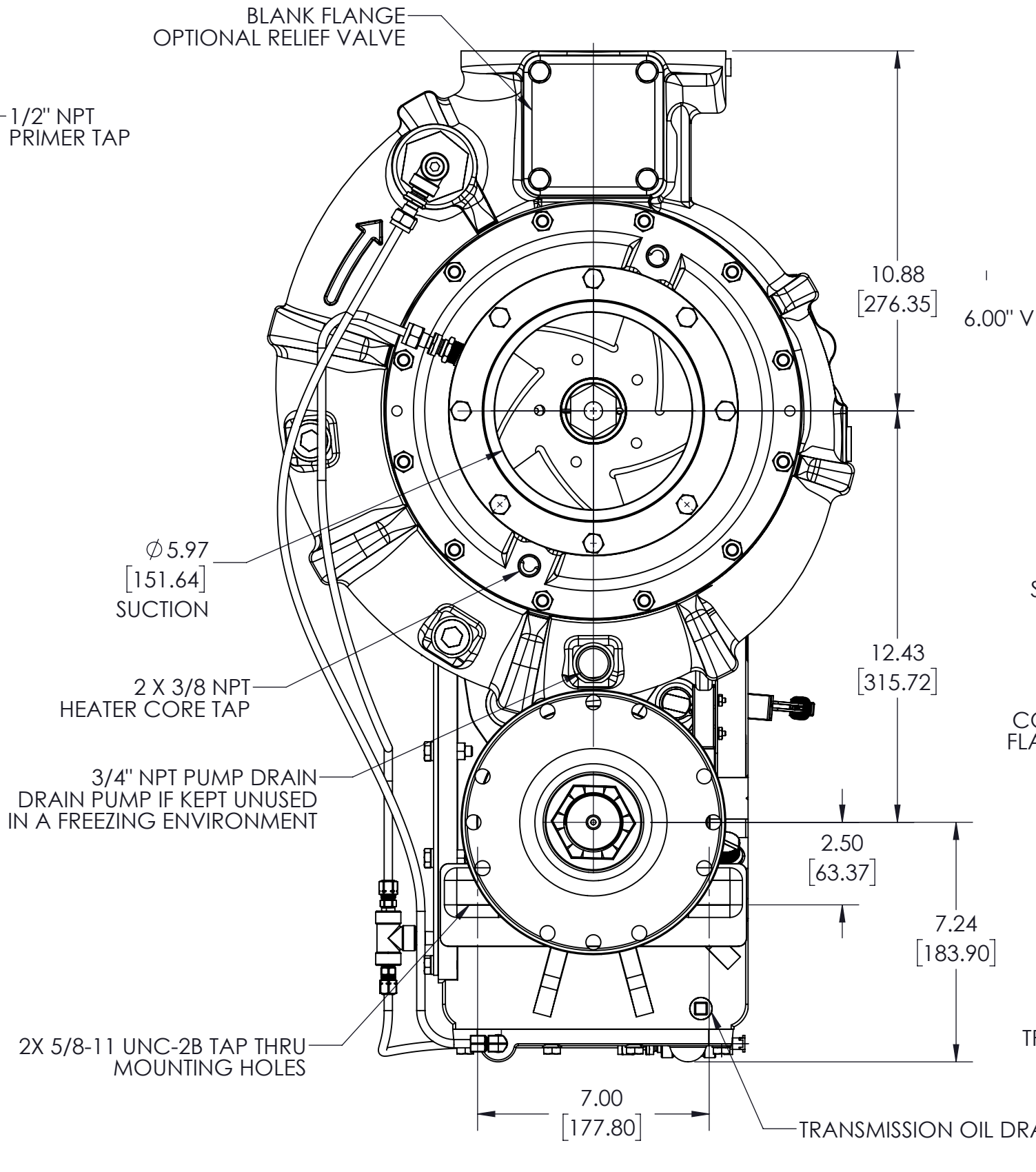
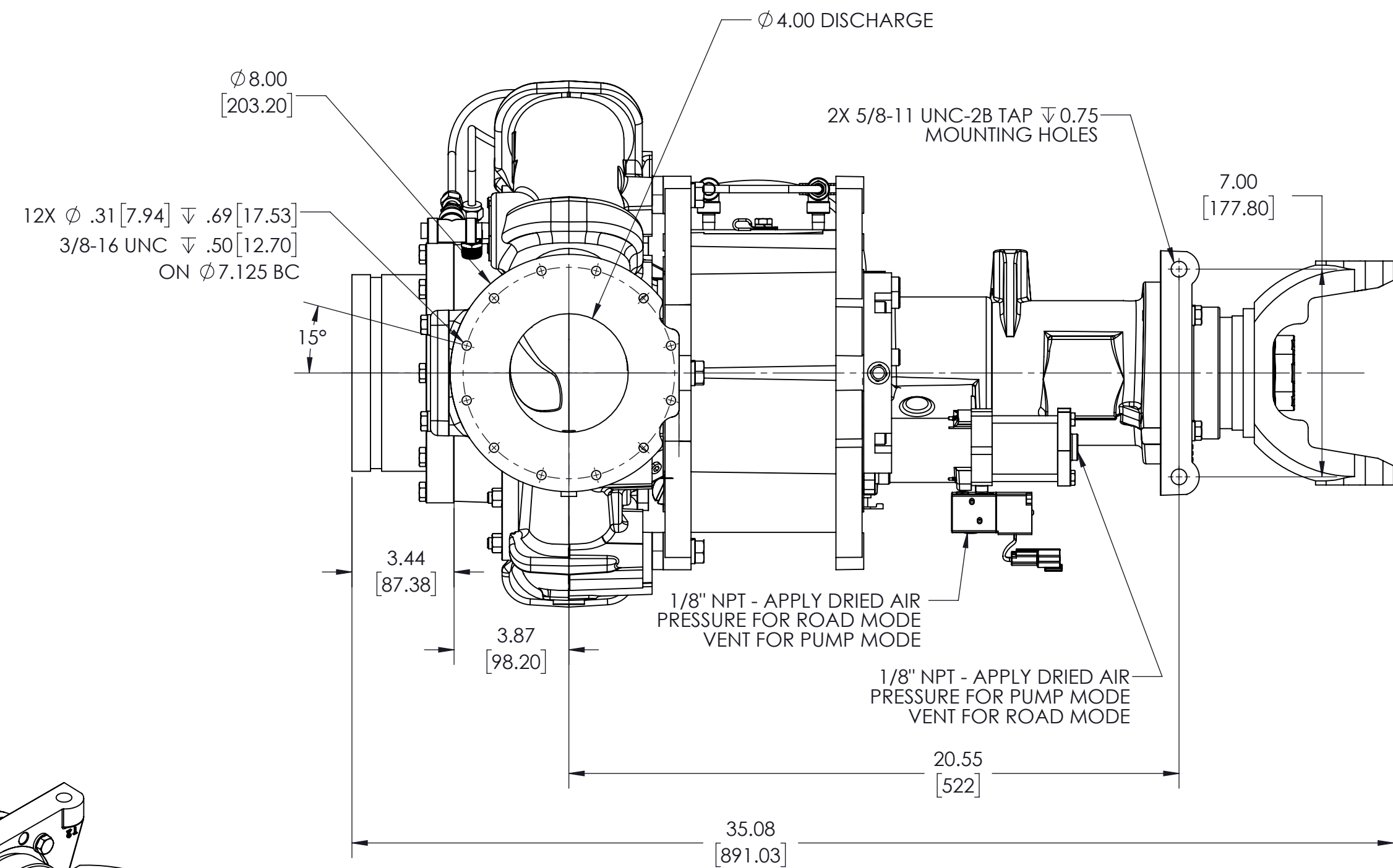
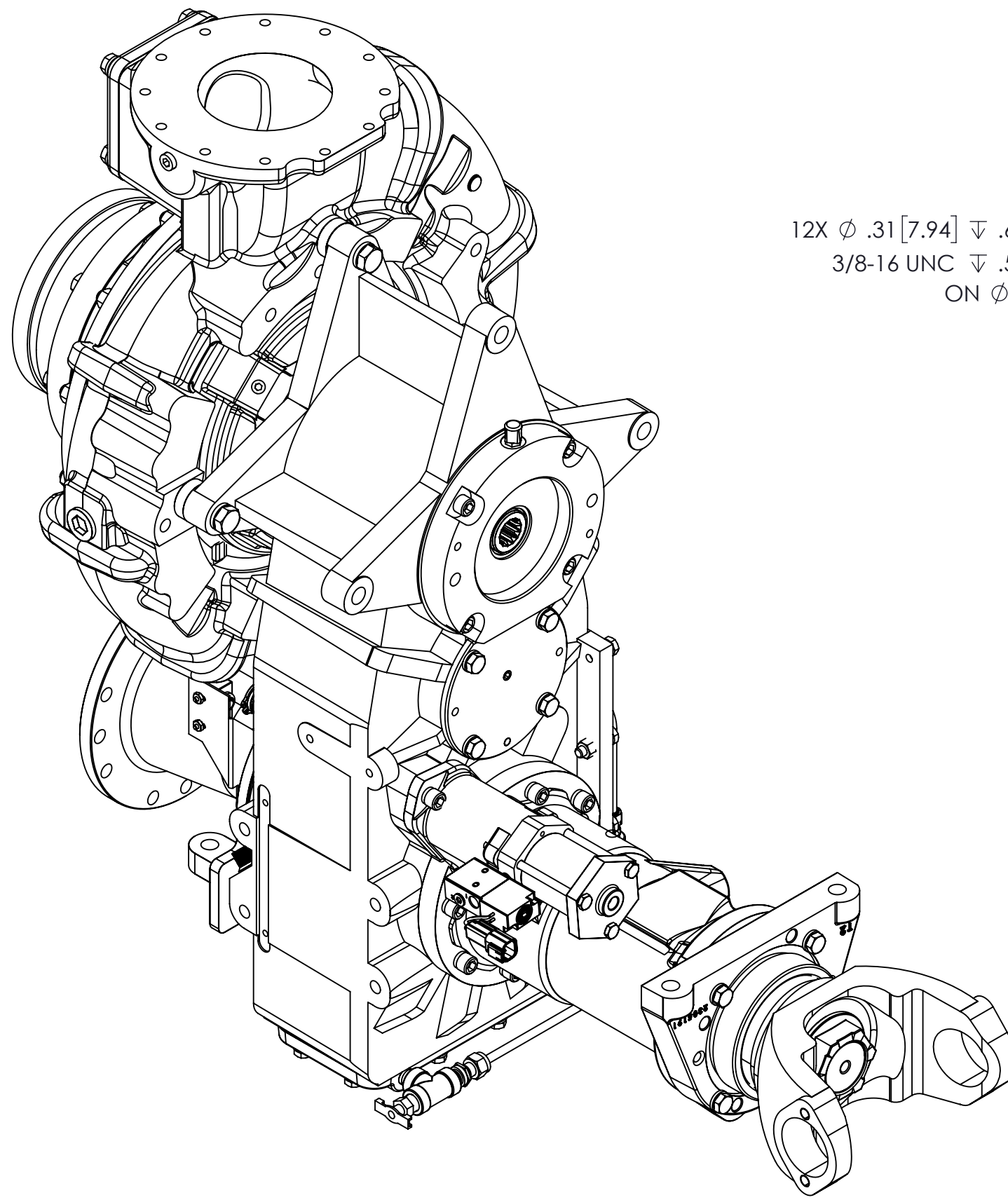
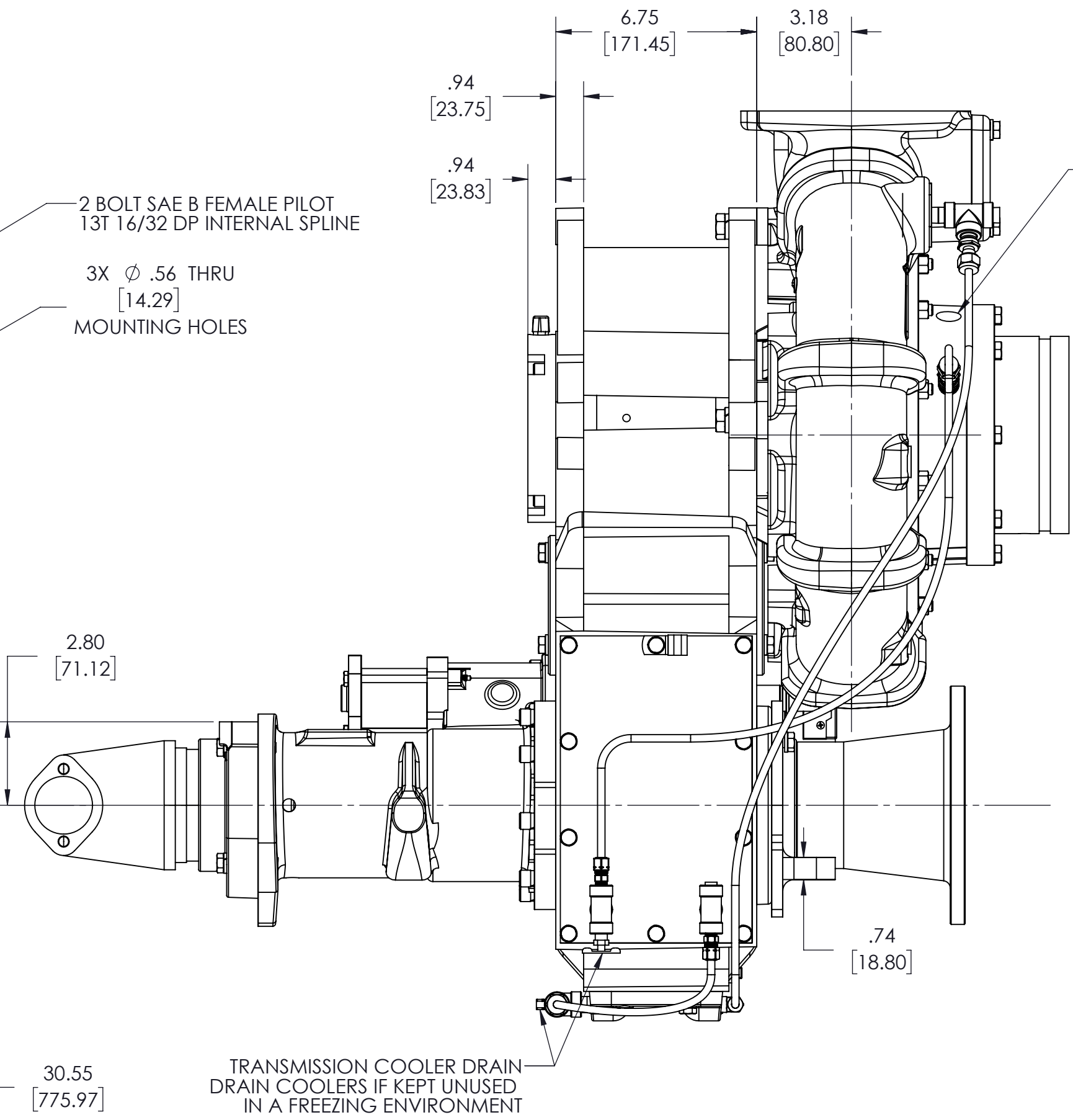
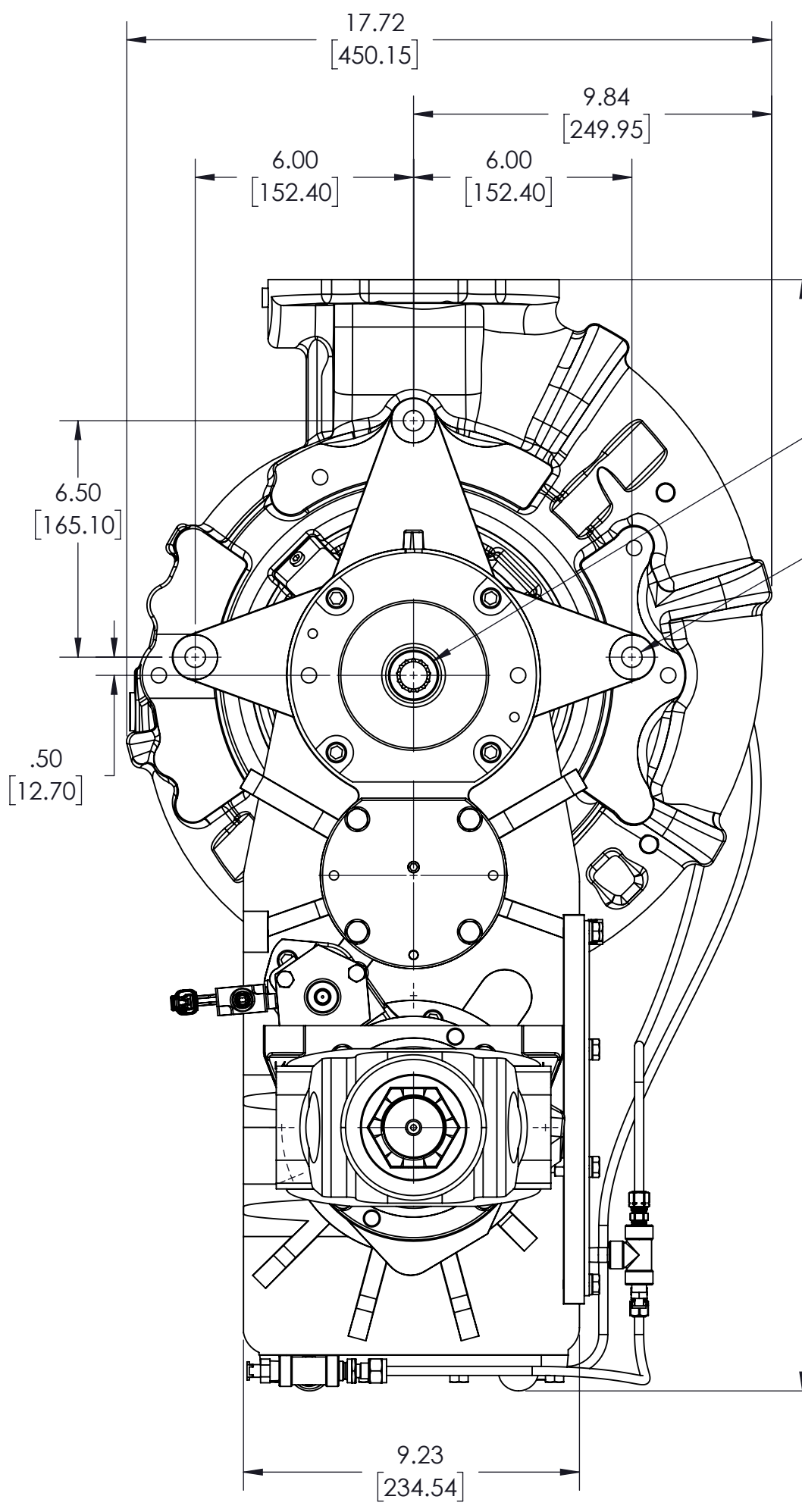
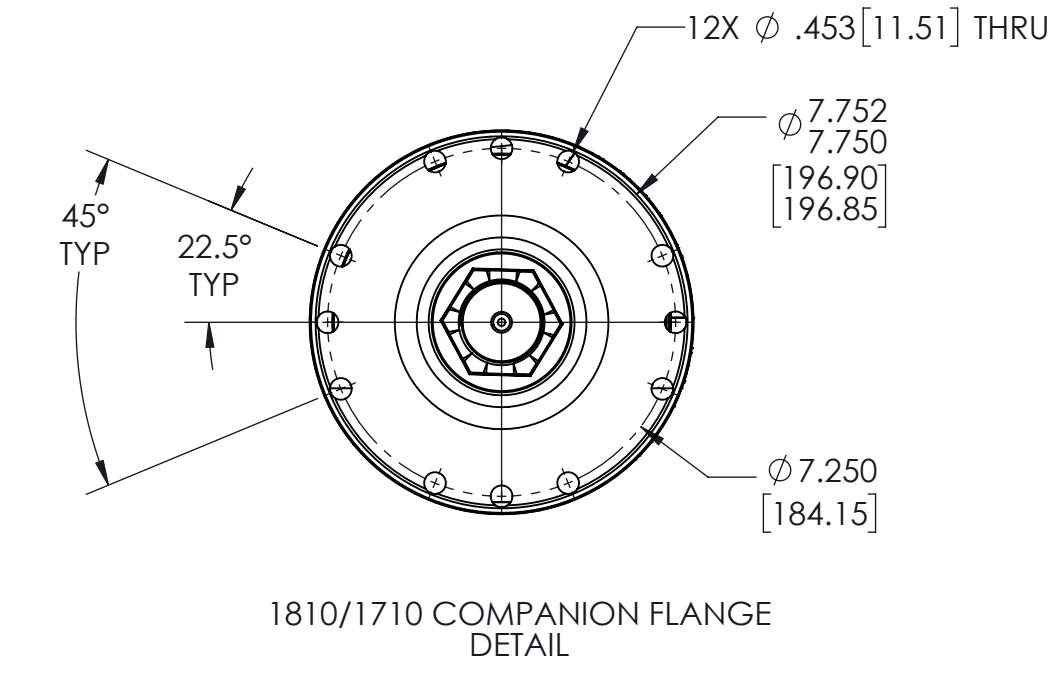


NOTES:
 1) ONLY SHIFT PUMP WHEN DRIVELINE IS NOT SPINNING
 2) APPROXIMATE WEIGHT: 540 LBS [245 KG]

ASSEMBLIES SHOWN:
 CAST IRON PUMP - PT01002
 TRANSMISSION - TM00240
 CAST IRON GEAR CASE - 1804204
 INPUT FLANGE - 4816811
 OUTPUT FLANGE - 4813610
 TRANSMISSION COOLER - AM00401
 TRANSMISSION COOLER - AM00403
 GEAR RATIO 2.12:1 - KR07701
 RV FLANGE - YF00601
 PUMP SHIFT - AH00403
 NO BRAKE - AB00403
 SHIFT INTERLOCK - AH00600
 SUCTION - YF01504



REMOVE SHARP EDGES		INCH [MILLIMETER]		THIRD ANGLE PROJECTION		OLD PART NO.		TOLERANCE EXCEPT AS NOTED		MODEL DTD1015		SHEET 1/1	
MATERIAL DESCRIPTION		MASS		MATERIAL NO.		PATTERN NO.		.00 ±.03 .000 ±.010 ANGLES ±1		DWG - TSM, PUMP FORWARD		DATE: 9/15/2021	
THIS DESIGN IS THE PROPERTY OF WS DARLEY CO. UNAUTHORIZED REPRODUCTION IS PROHIBITED		526.03 LBS		ALL DIMENSIONS IN INCHES UNLESS NOTED		DO NOT SCALE PRINT		DRWN SMS CKHD WAH TRCD		DWG - TSM, PUMP FORWARD 1810, VIC SUCTION		SCALE: 1:4	

