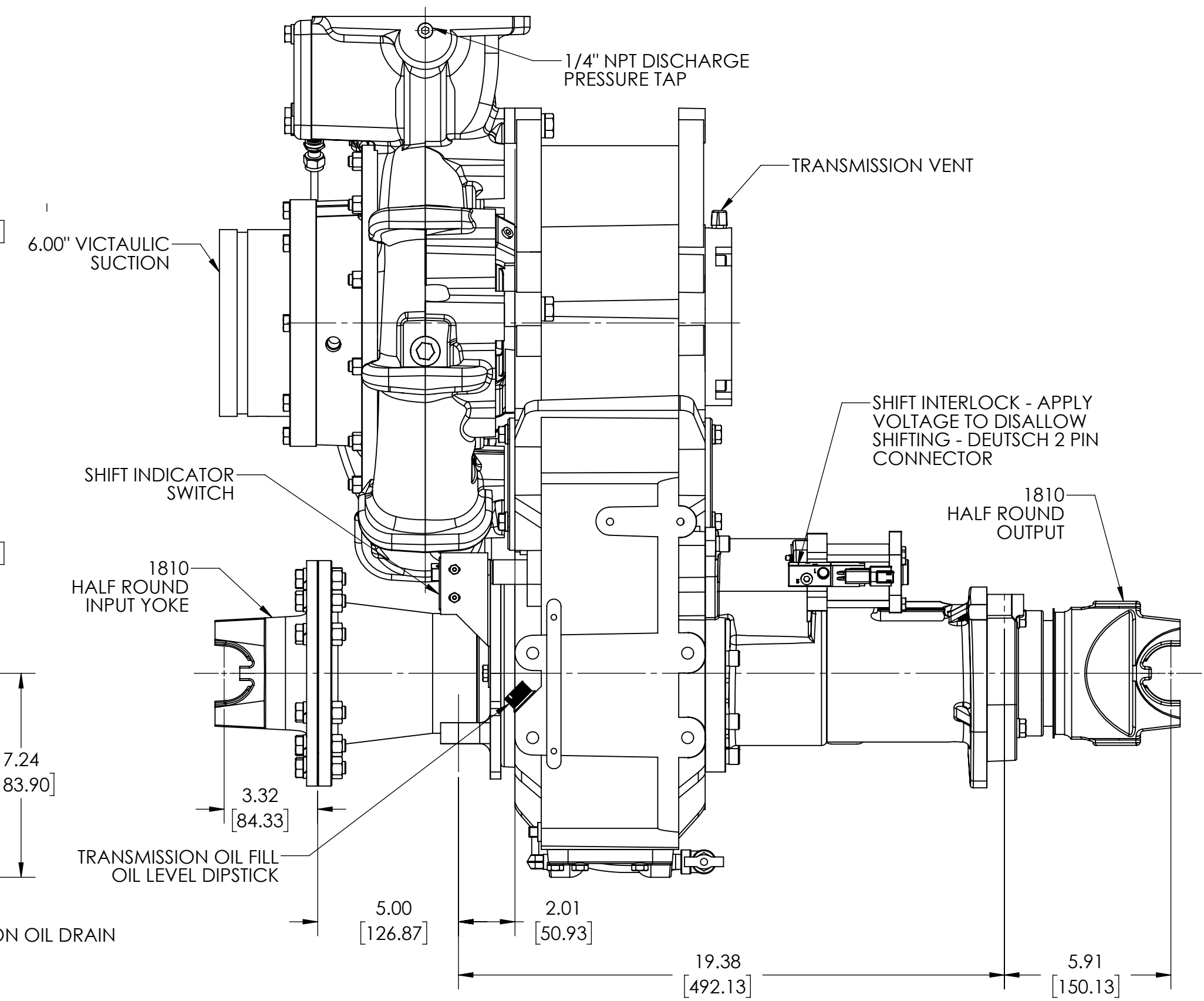
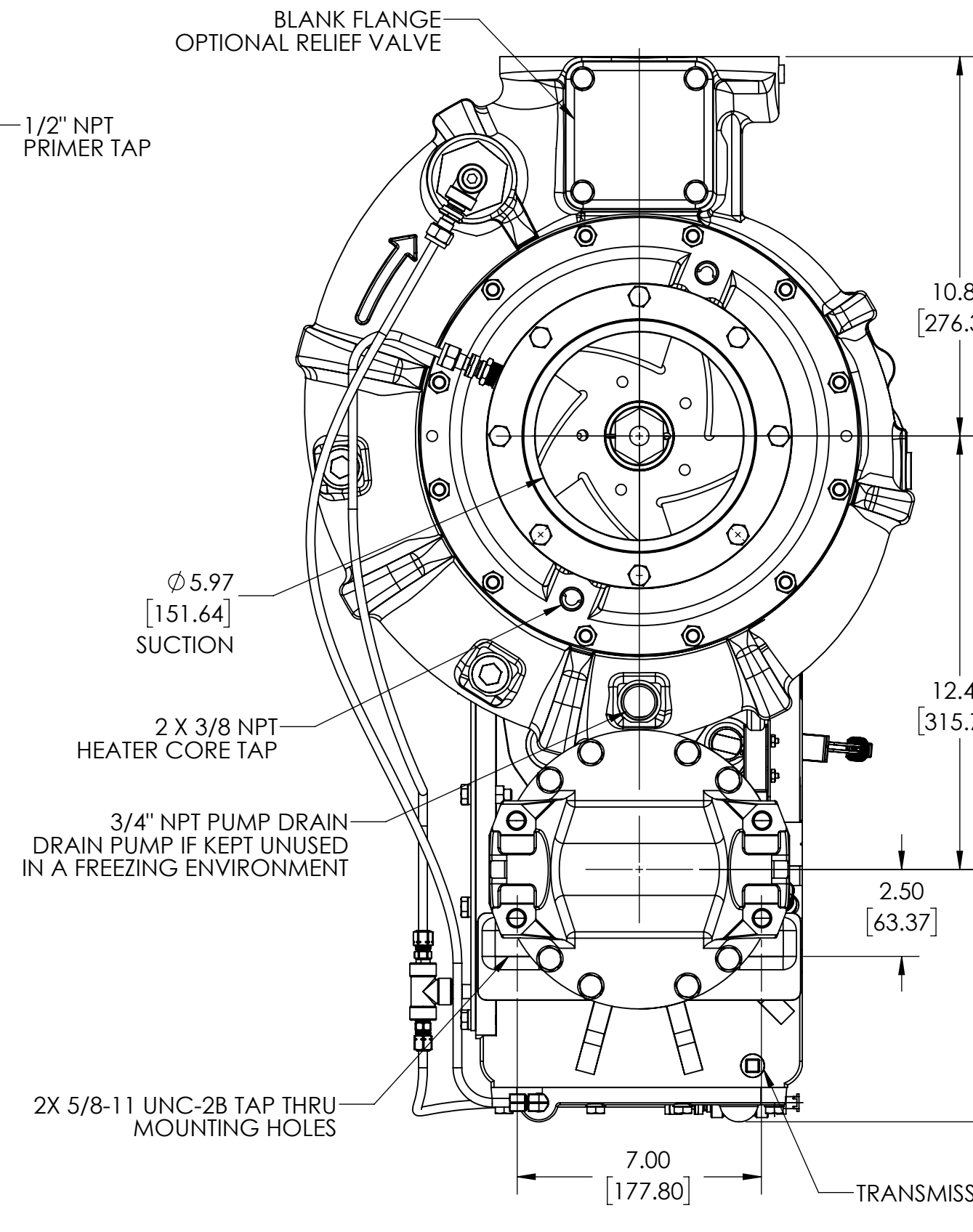
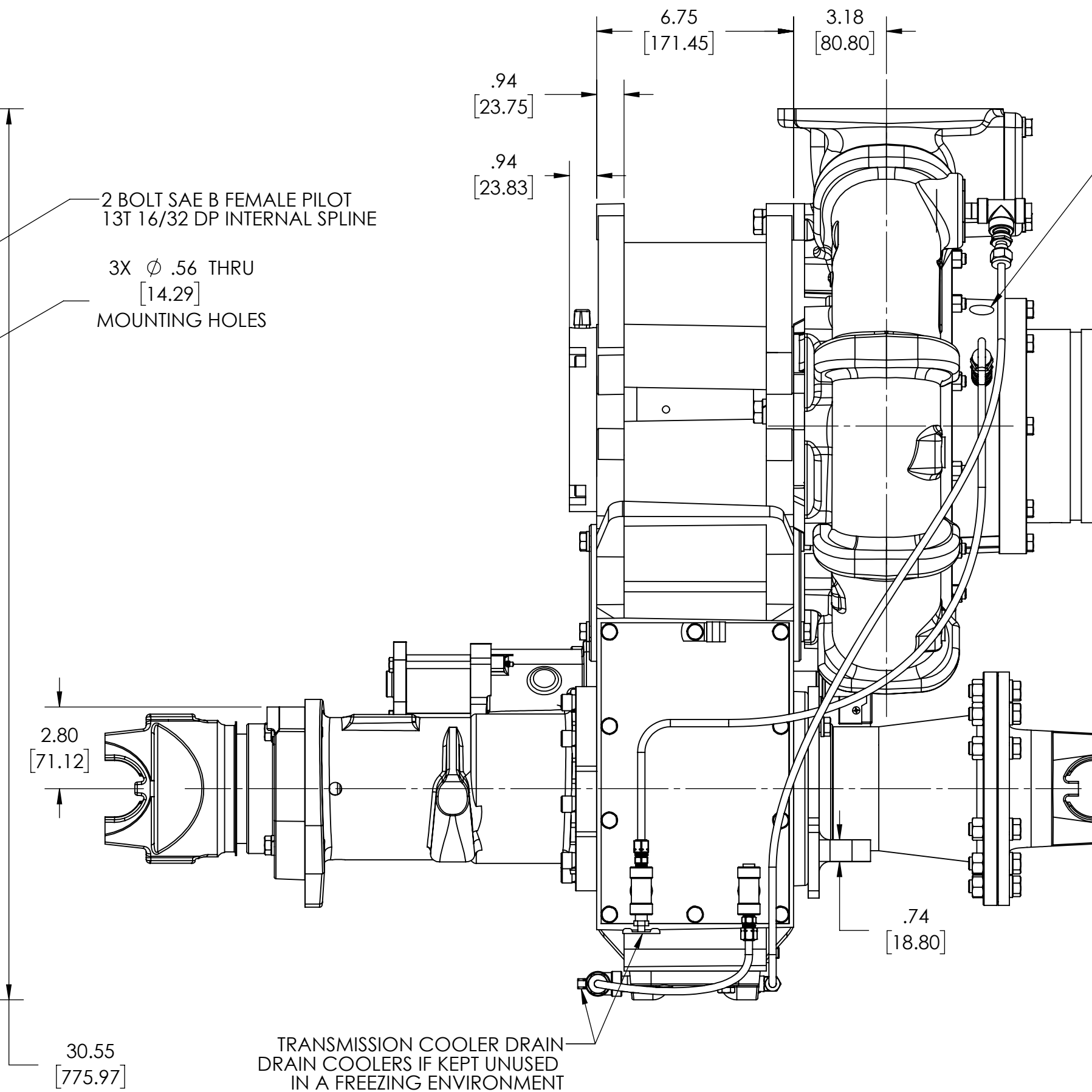
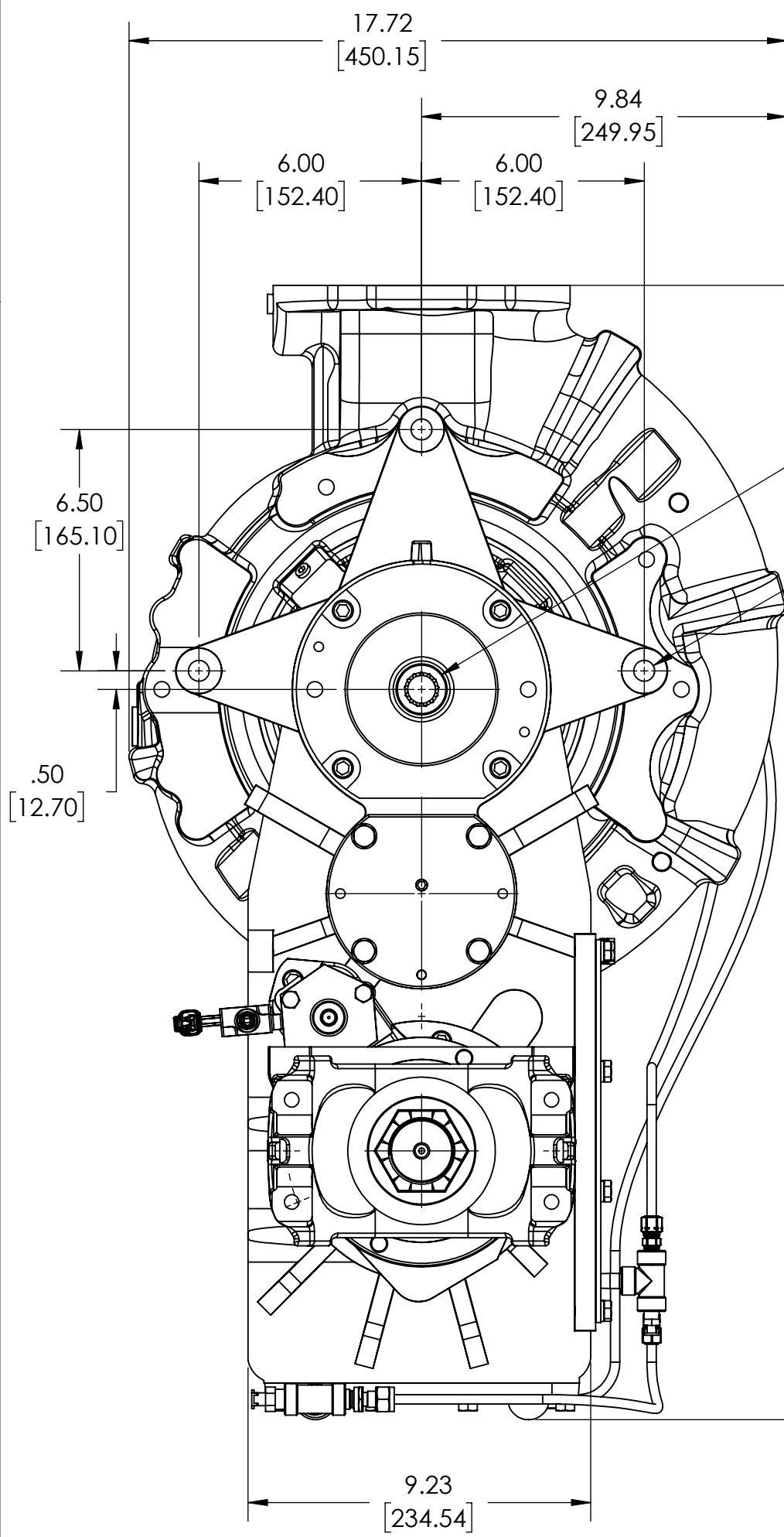
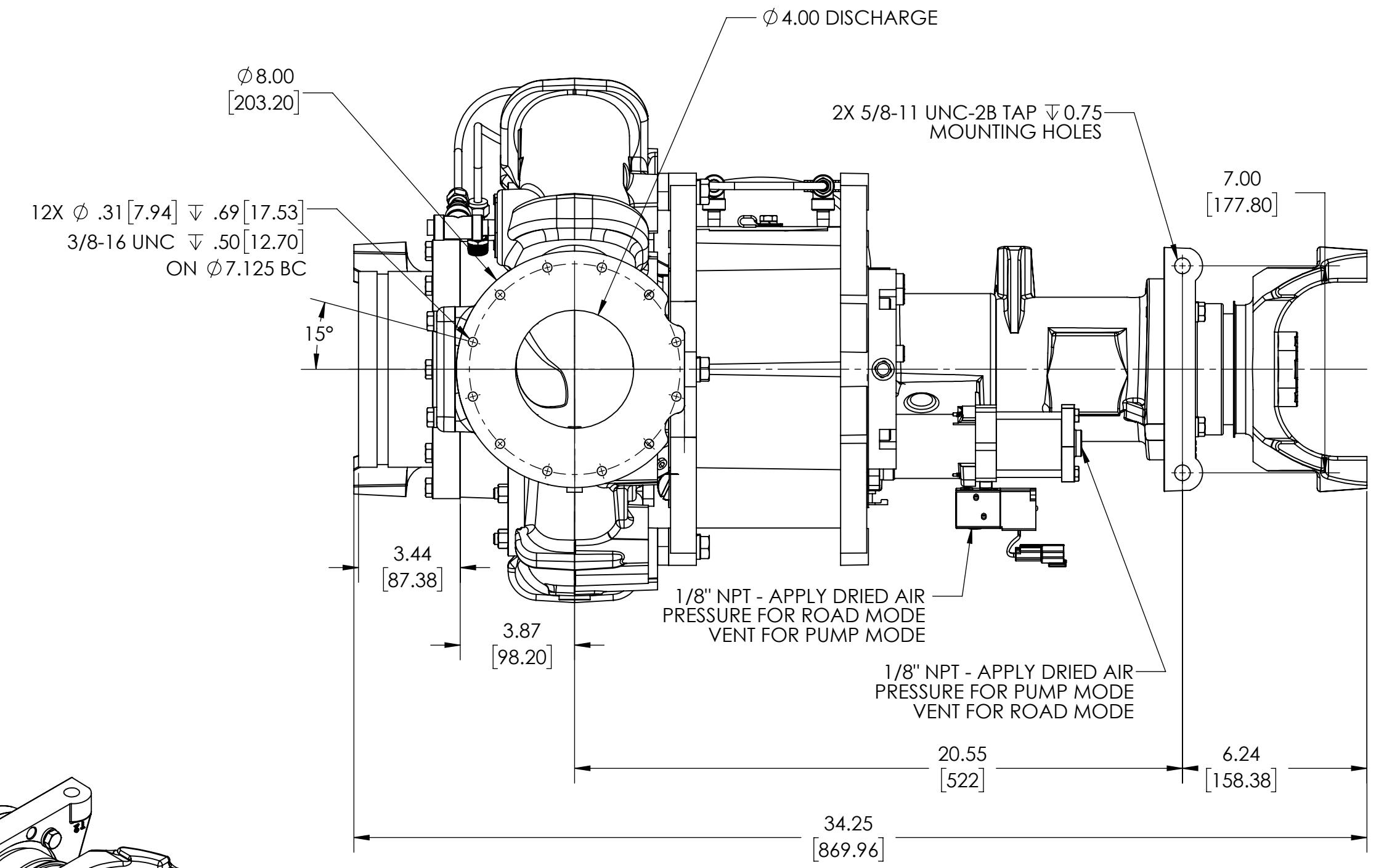
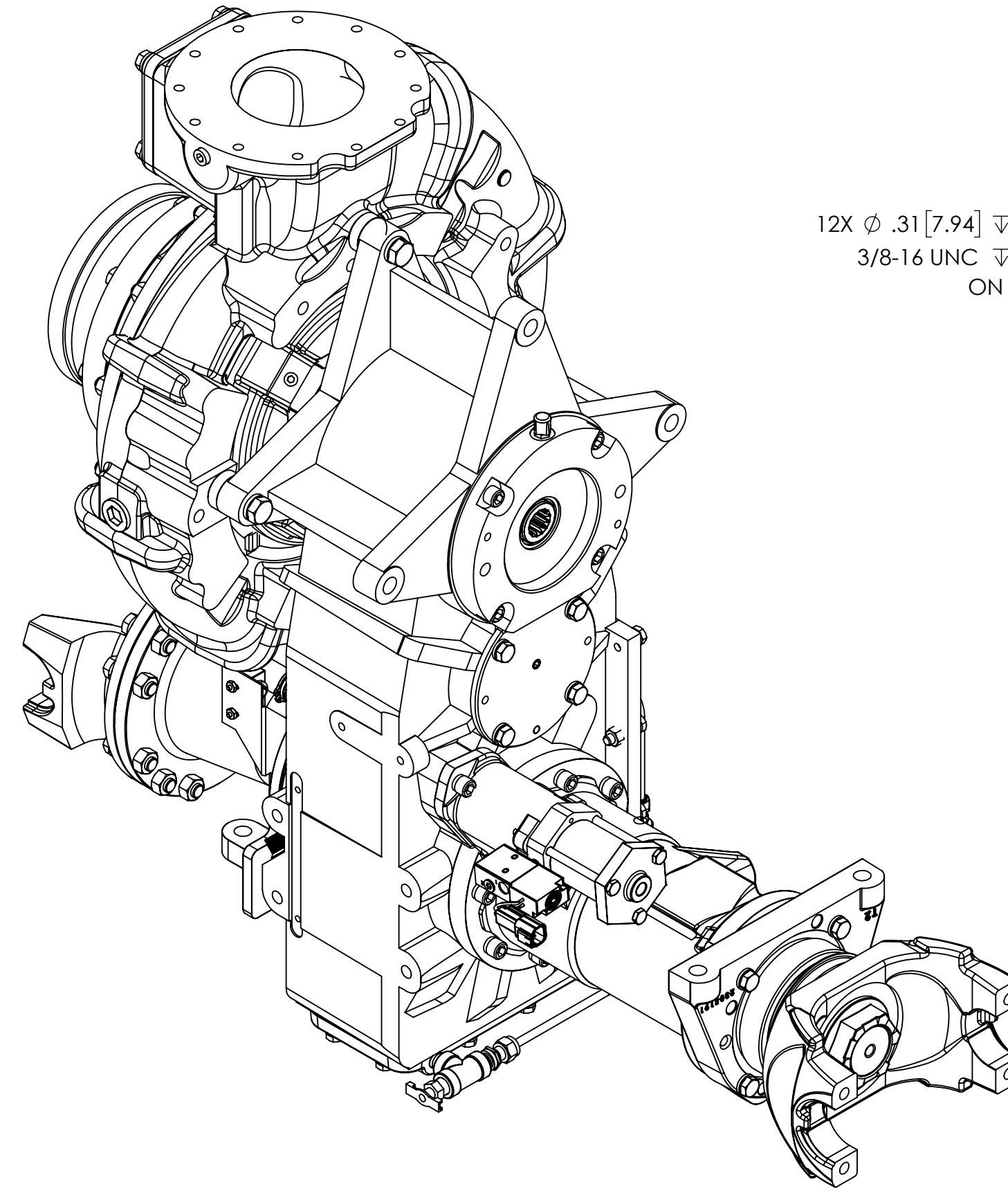
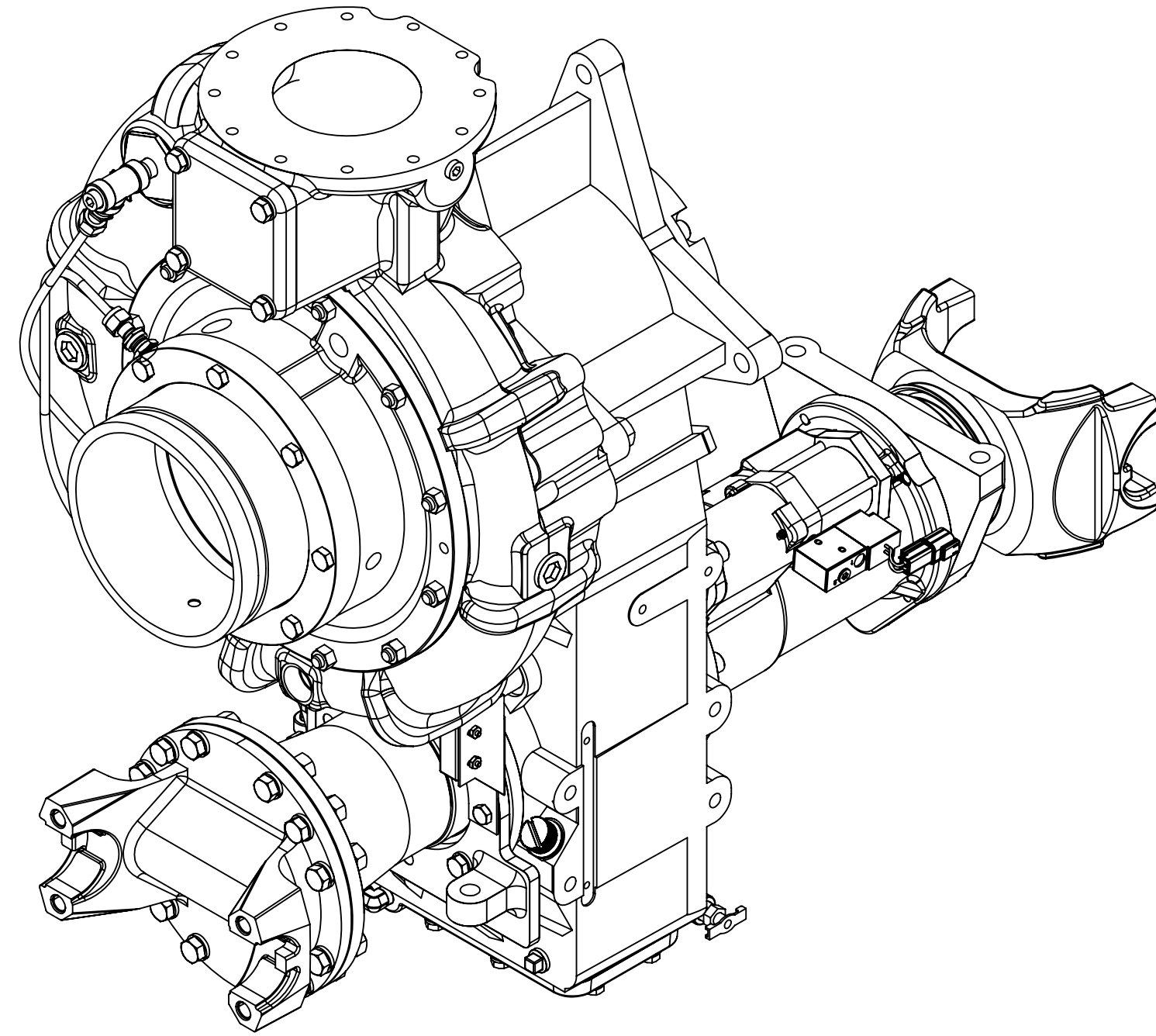


NOTES:
 1) ONLY SHIFT PUMP WHEN DRIVELINE IS NOT SPINNING
 2) APPROXIMATE WEIGHT: 544 LBS [247 KG]

ASSEMBLIES SHOWN:
 CAST IRON PUMP - PT01002
 TRANSMISSION - TM00240
 CAST IRON GEAR CASE - 1804204
 INPUT FLANGE - AU01006
 OUTPUT FLANGE - 4815013
 TRANSMISSION COOLER - AM00401
 TRANSMISSION COOLER - AM00403
 GEAR RATIO 2.12:1 - KR07701
 RV FLANGE - YF00601
 PUMP SHIFT - AH00403
 NO BRAKE - AB00403
 SHIFT INTERLOCK - AH00600
 SUCTION - YF01504



| | | | | | | | | | | | | | |
|--|--|-------------------|--|---------------------------------------|--|--------------------|--|---|--|--|--|------------------------------|--|
| REMOVE SHARP EDGES | | INCH [MILLIMETER] | | THIRD ANGLE PROJECTION | | OLD PART NO. | | TOLERANCE EXCEPT AS NOTED | | MODEL | | SHEET | |
| MATERIAL DESCRIPTION | | MASS | | MATERIAL NO. | | PATTERN NO. | | .00 ±.03 .000 ±.010 ANGLES ±1 | | dl1013 | | 1/1 D | |
| THIS DESIGN IS THE PROPERTY OF W.S. DARLEY CO. - UNAUTHORIZED REPRODUCTION IS PROHIBITED | | 540.28 LBS | | ALL DIMENSIONS IN INCHES UNLESS NOTED | | DO NOT SCALE PRINT | | DWG - TSM, PUMP FORWARD 1810 HR, VIC SUCTION | | Darley ITASCA, IL CHIPPewa FALLS, WI | | DATE: 9/8/2021 SCALE: 1:4 | |
| | | | | | | | | DRWN SMS CHKD WAH TRCD | | DATE: 9/8/2021 SCALE: 1:4 | | DTD1013 | |