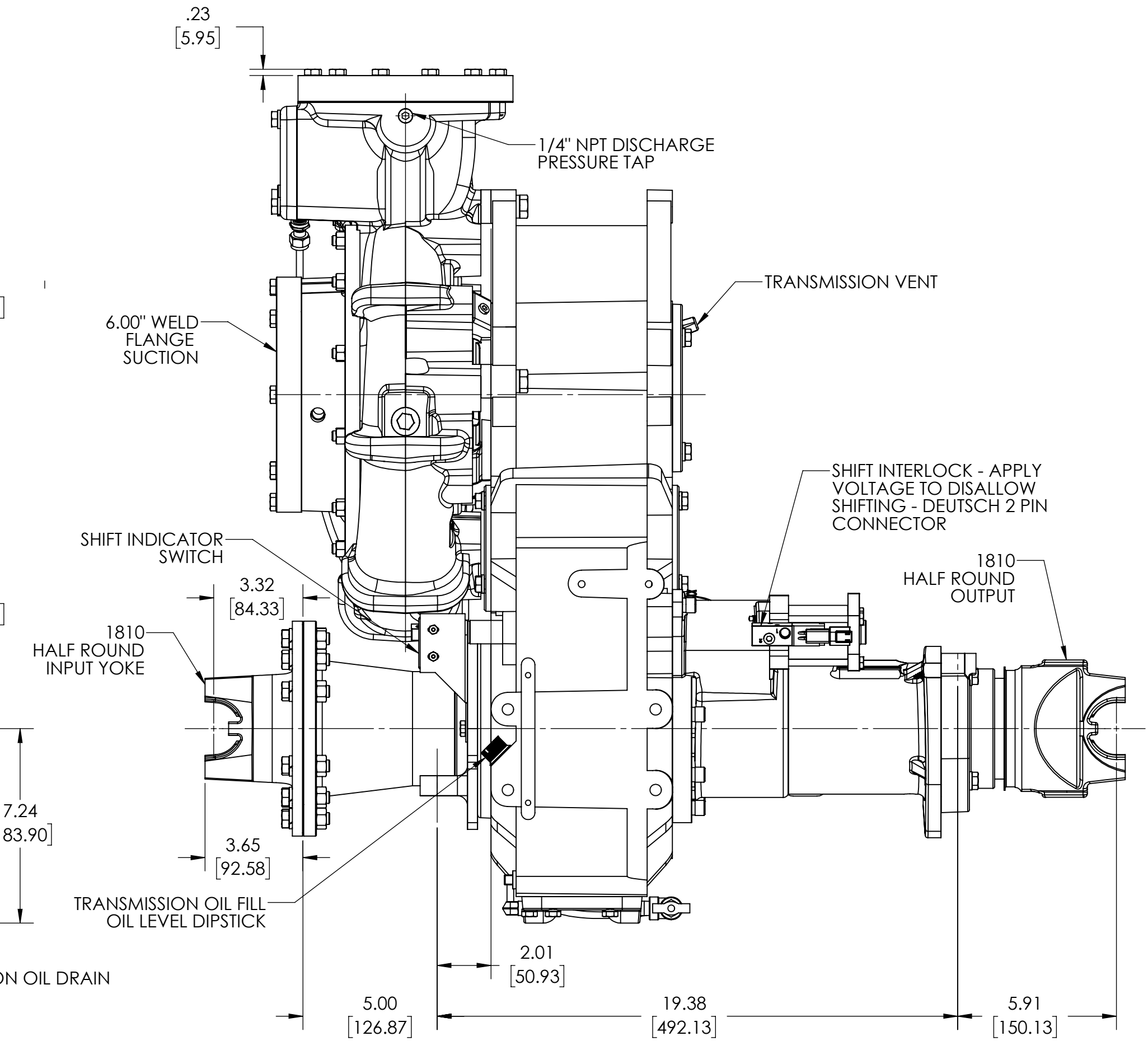
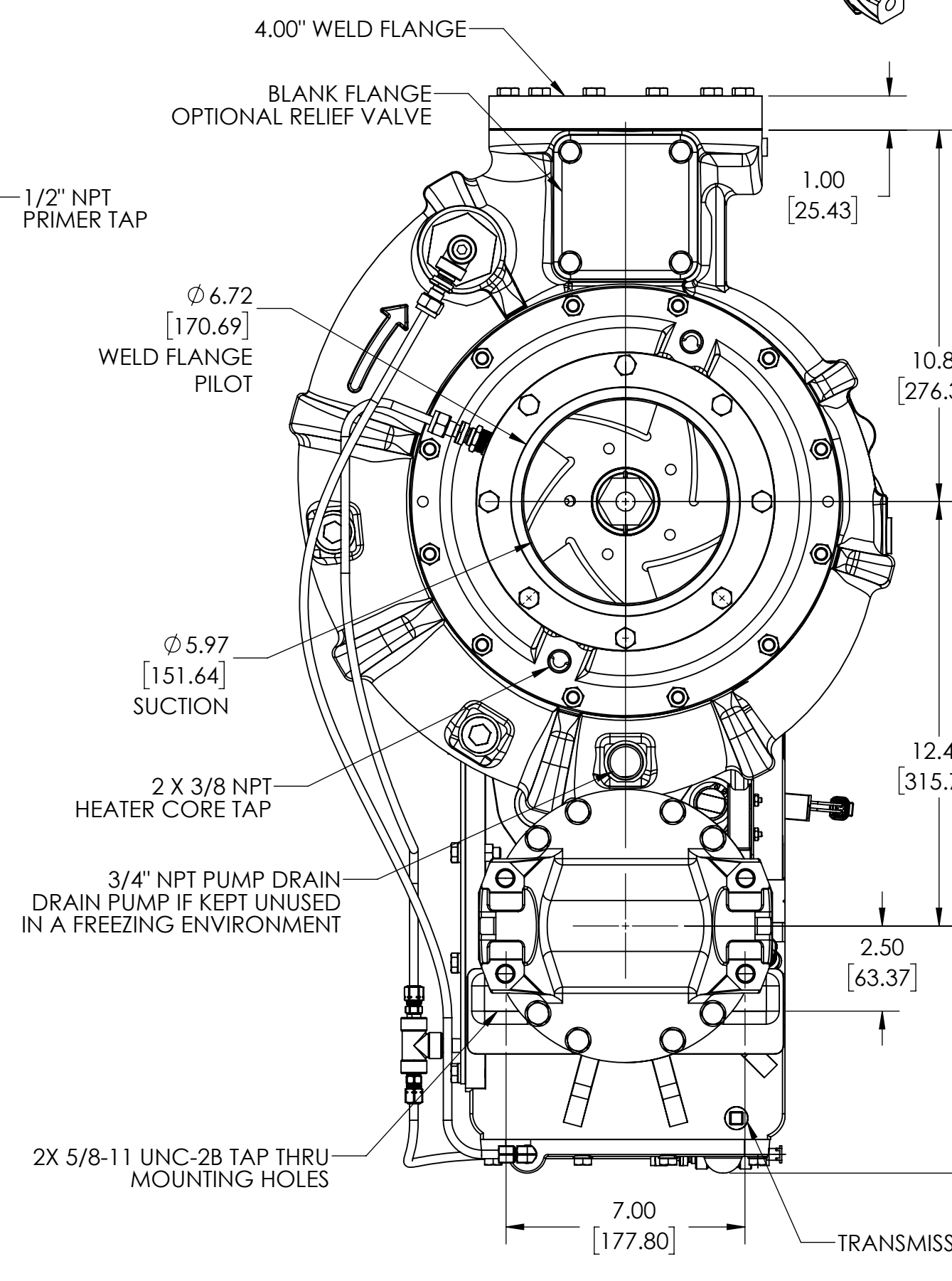
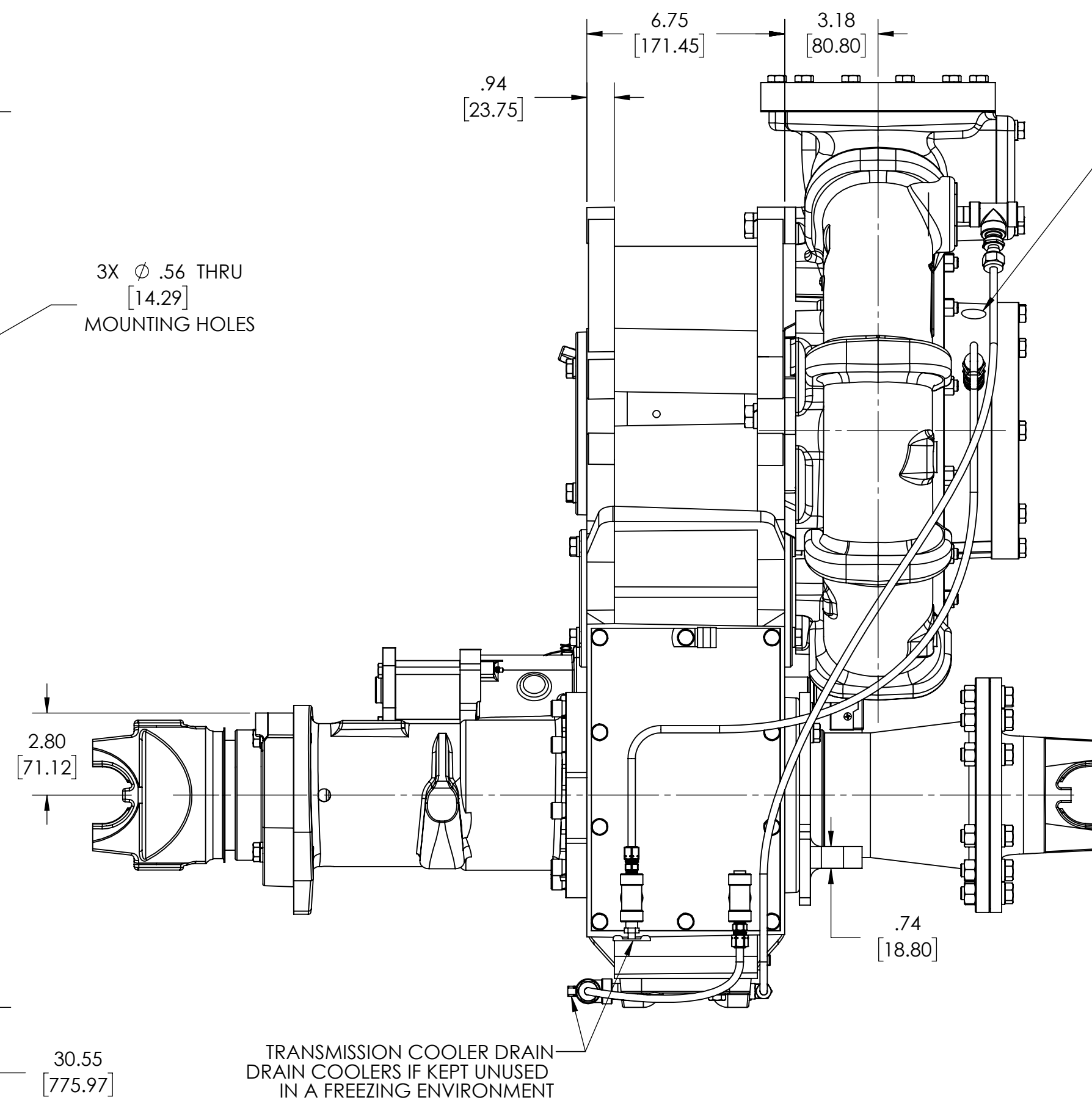
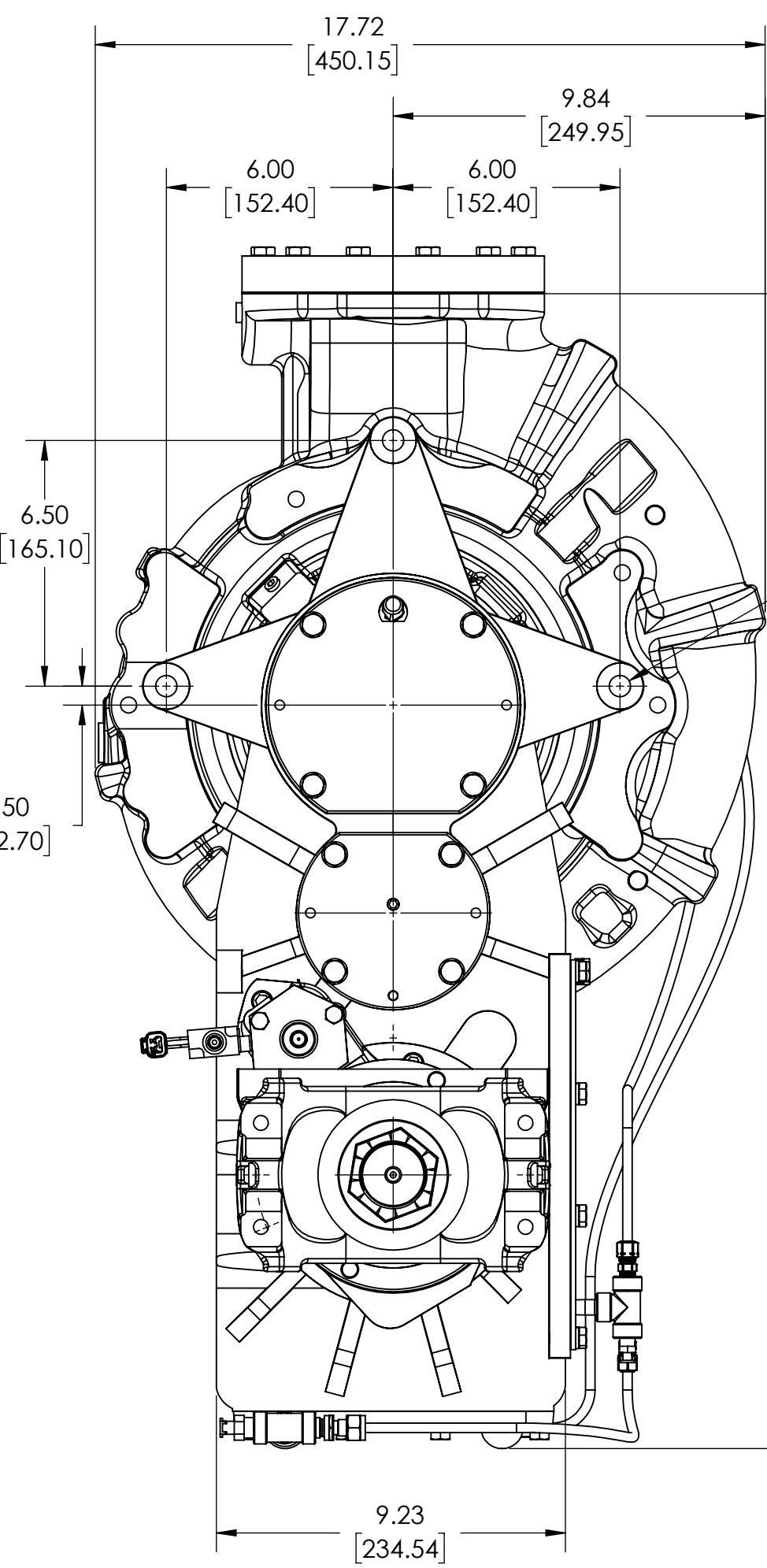
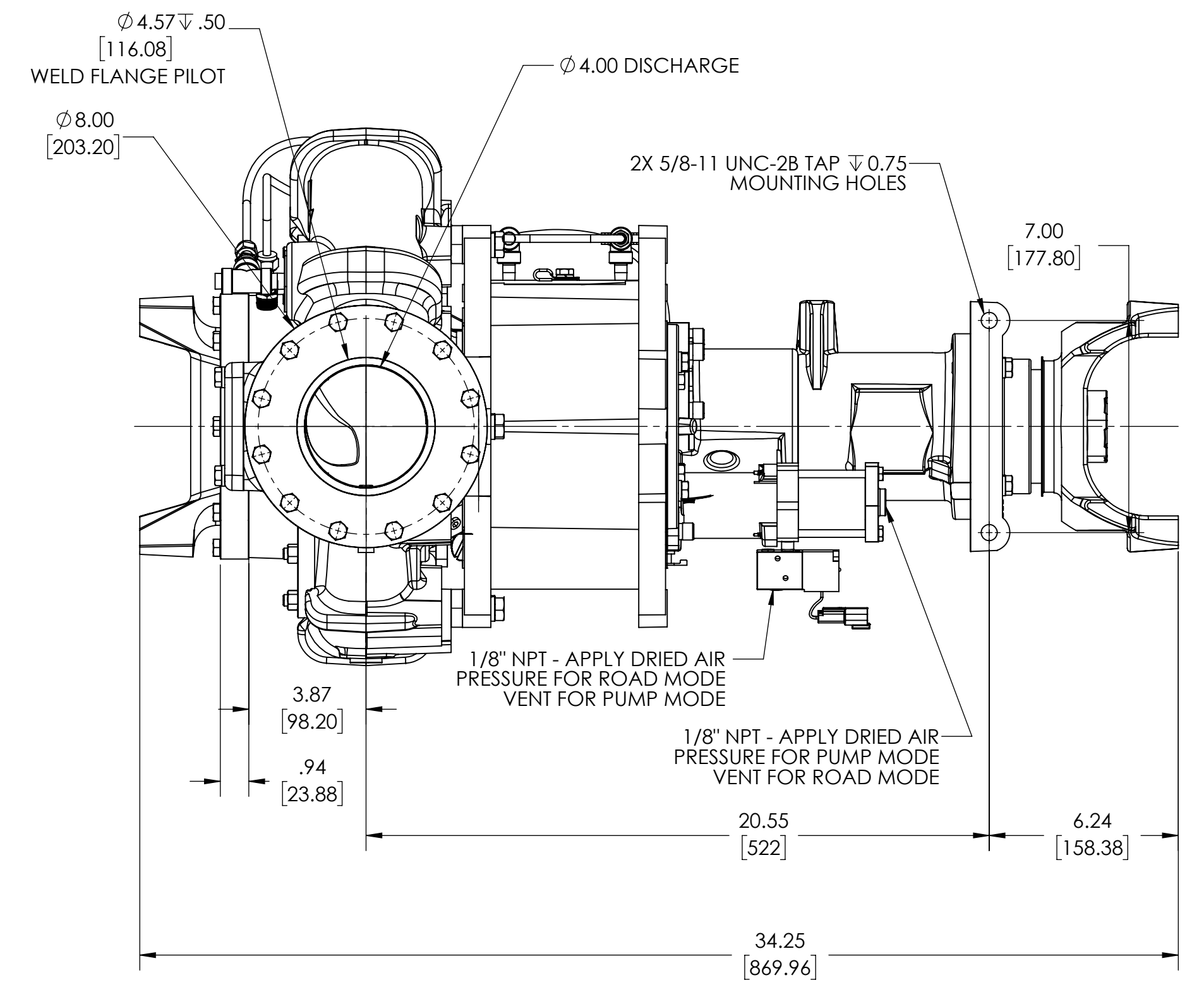
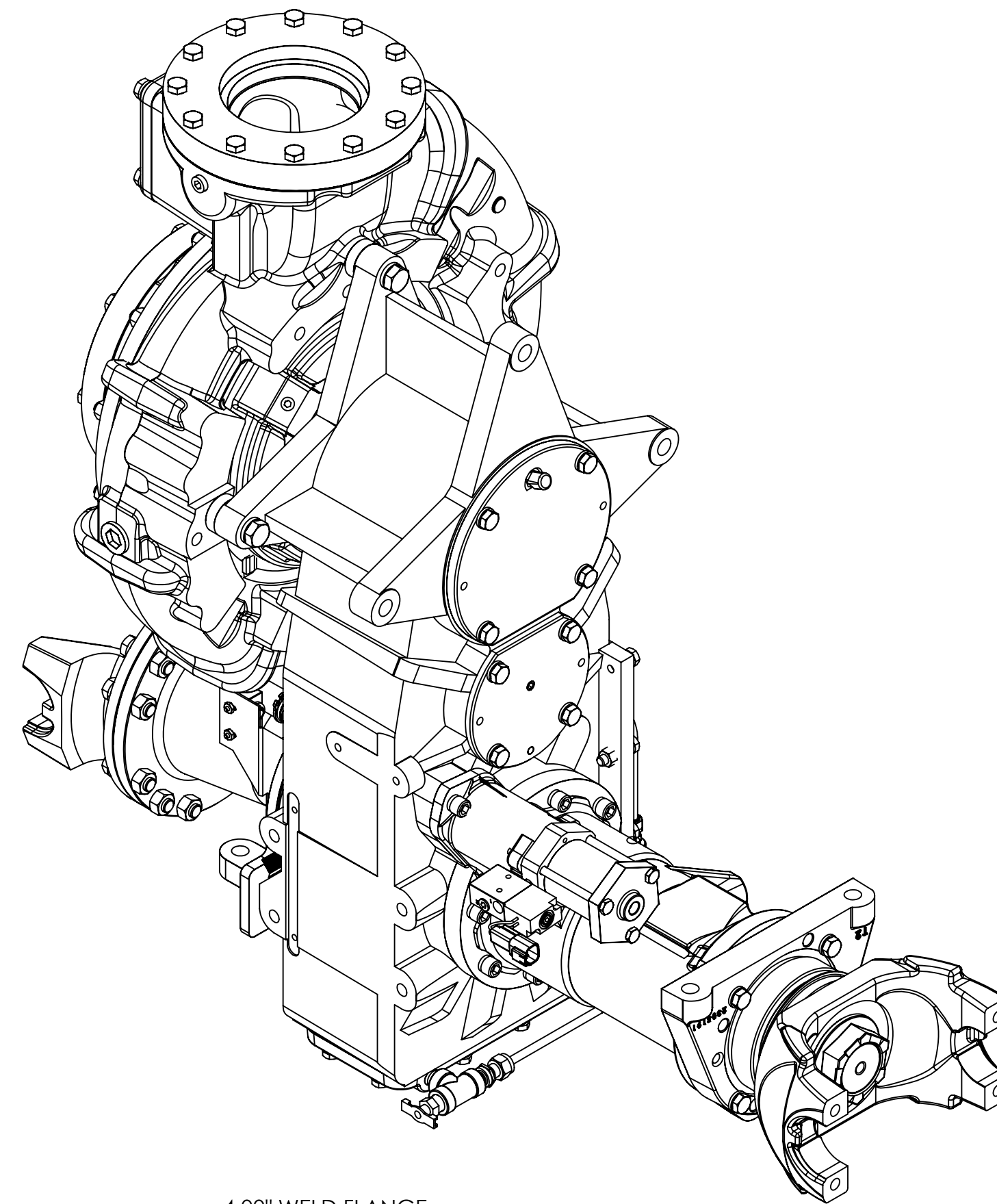
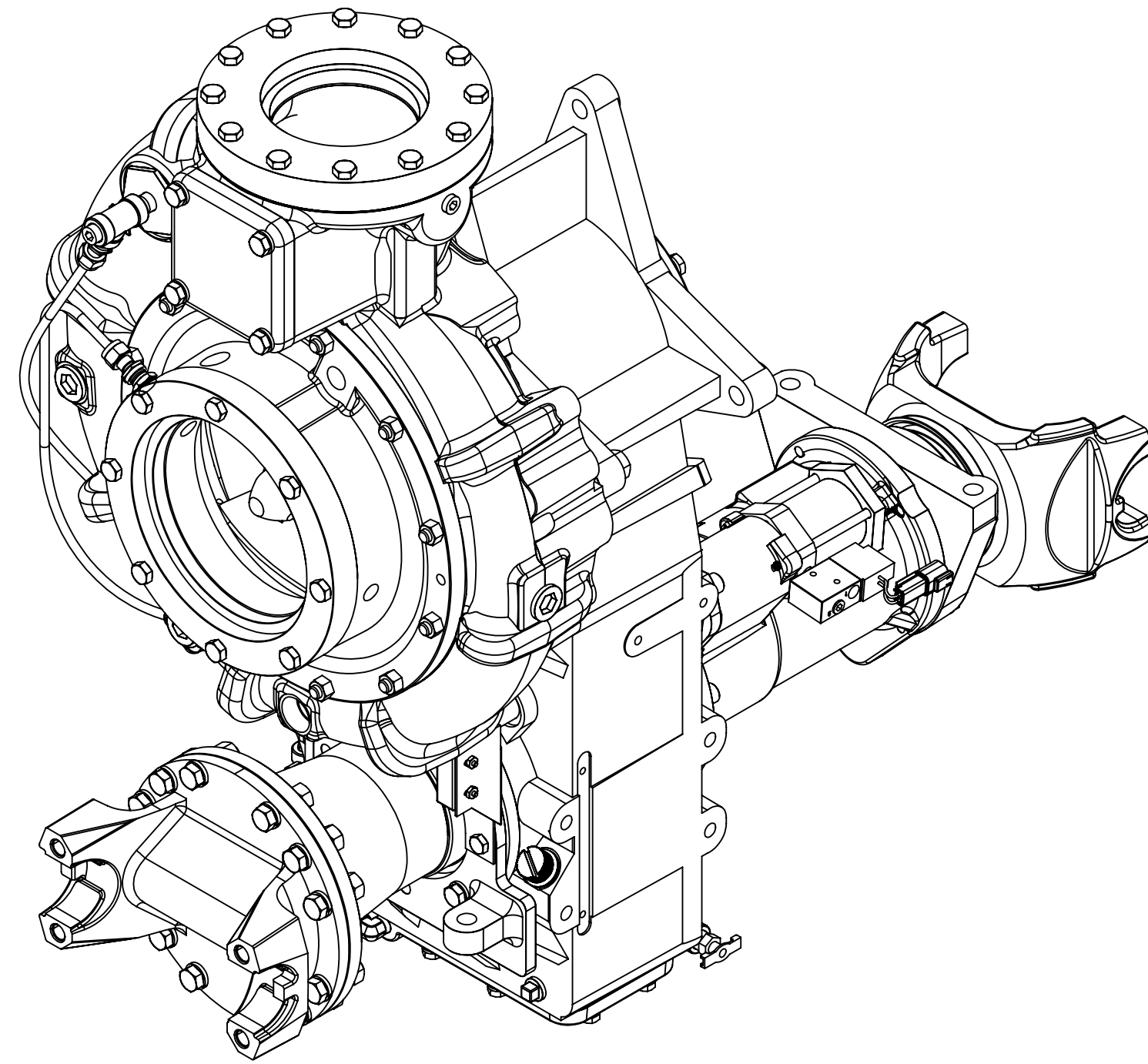


NOTES:
 1) ONLY SHIFT PUMP WHEN DRIVELINE IS NOT SPINNING
 2) APPROXIMATE WEIGHT: 557 LBS [253 KG]

ASSEMBLIES SHOWN:
 CAST IRON PUMP - PT01000
 TRANSMISSION - TM00238
 CAST IRON GEAR CASE - 1804204
 INPUT FLANGE - AU01006
 OUTPUT FLANGE - 4815013
 TRANSMISSION COOLER - AM00401
 TRANSMISSION COOLER - AM00403
 GEAR RATIO 2.12:1 - KR07701
 RV FLANGE - YF00601
 PUMP SHIFT - AH00403
 NO BRAKE - AB00403
 SHIFT INTERLOCK - AH00600
 SUCTION - YF01501
 DISCHARGE FLANGE - YF00141



REMOVE SHARP EDGES		INCH [MILLIMETER]		THIRD ANGLE PROJECTION		OLD PART NO.		TOLERANCE EXCEPT AS NOTED		MODEL		SHEET	
MATERIAL DESCRIPTION		MASS		MATERIAL NO.		PATTERN NO.		.00 \pm .03 .000 \pm .010 ANGLES \pm 1		DTD1012		1/1 D	
THIS DESIGN IS THE PROPERTY OF W.S. DARLEY CO. - UNAUTHORIZED REPRODUCTION IS PROHIBITED		541.09 LBS		ALL DIMENSIONS IN INCHES UNLESS NOTED		DWG - TSM, PUMP FORWARD 1810 HR, WELD FLANGES		DRWN SMS CKHD WAH TRCD		DATE: 9/8/2021		SCALE: 1:4	
DO NOT SCALE PRINT										DTD1012			

