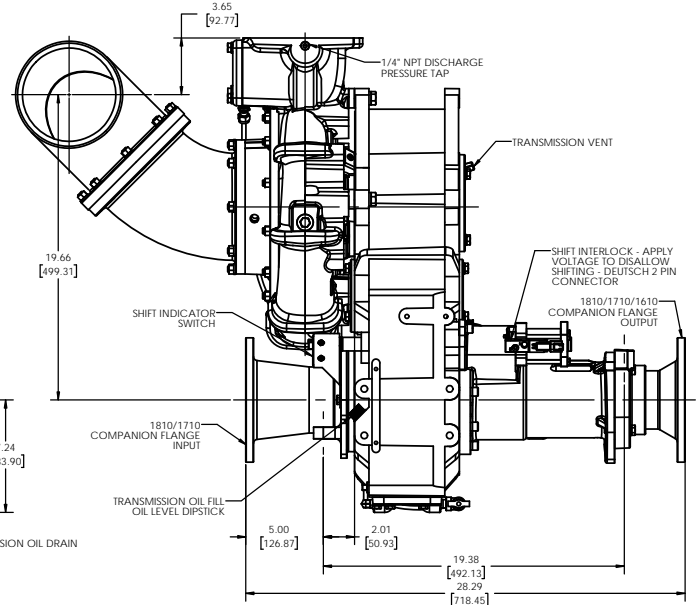
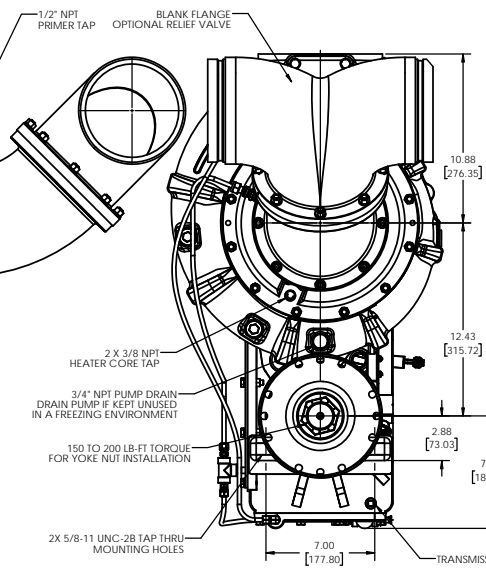
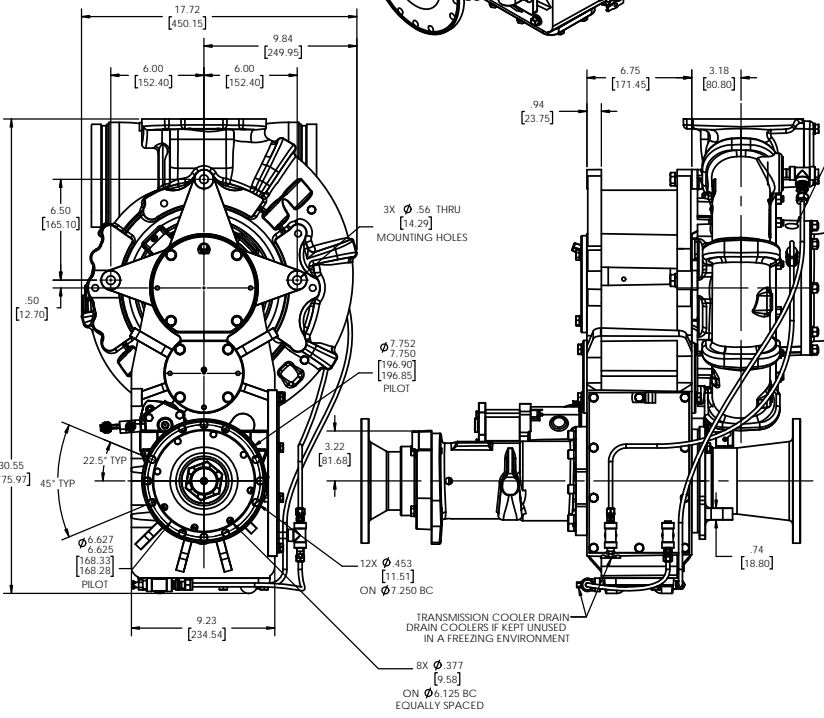
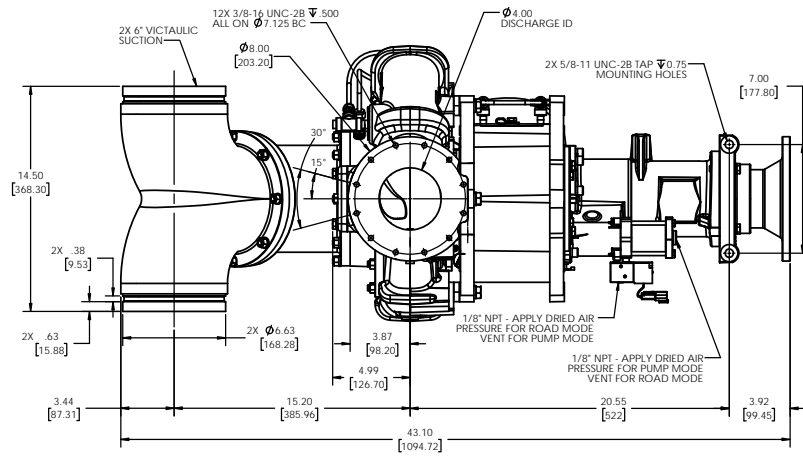
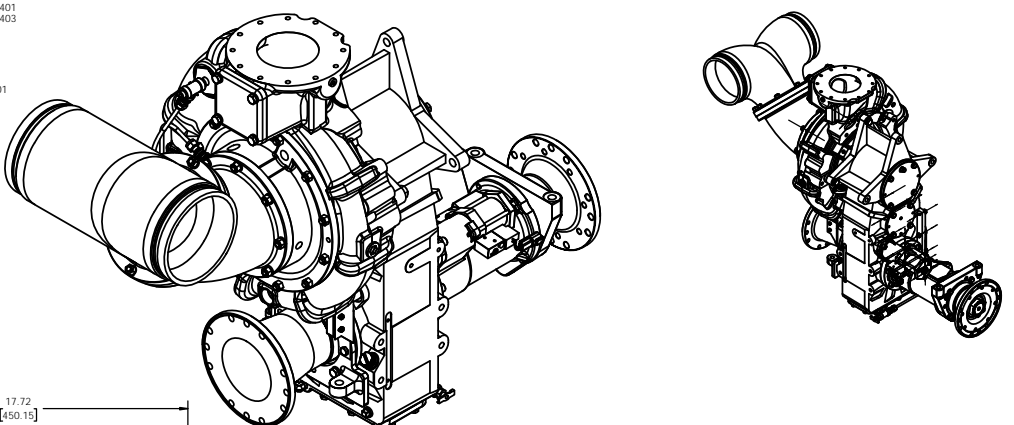


NOTES:  
 1) ONLY SHIFT PUMP WHEN DRIVELINE IS NOT SPINNING  
 2) APPROXIMATE WEIGHT: 570 LBS [258 KG]

ASSEMBLIES SHOWN:  
 CAST IRON PUMP - P101000  
 TRANSMISSION - TM00238  
 CAST IRON GEAR CASE - 1804204  
 INPUT FLANGE - 4816811  
 OUTPUT FLANGE - 4816810  
 TRANSMISSION COOLER - AM00401  
 GEAR RATIO 2.12:1 - KR07701  
 RV FLANGE - YF00601  
 PUMP SHIFT - AH00403  
 NO BRAKE - AB00403  
 SHIFT INTERLOCK - AH00600  
 45° SUCTION ELBOW - KC02600  
 STRAIGHT SUCTION TEE - KC02501



REMOVE SHARP EDGES	INCH (MILLIMETERS)	OLD PART NO.	DATE	1	D
MATERIAL DESCRIPTION	MATERIAL NO.	PATTERN NO.	DATE	1	D
THIS DESIGN IS THE PROPERTY OF		ALL DIMENSIONS IN		DO NOT SCALE PRINT	
HIG SHAWBY CO. UNPUBLISHED		INCHES UNLESS NOTED		SCALE: 1:1	
REPRODUCTION IS PROHIBITED		DATE: 10/27/2003		D.T.D.1008	
DESIGN: SWAY		SCALE: 1:1		D.T.D.1008	
CHKD: PWS		DATE: 10/27/2003		D.T.D.1008	
TRCD:		SCALE: 1:1		D.T.D.1008	

