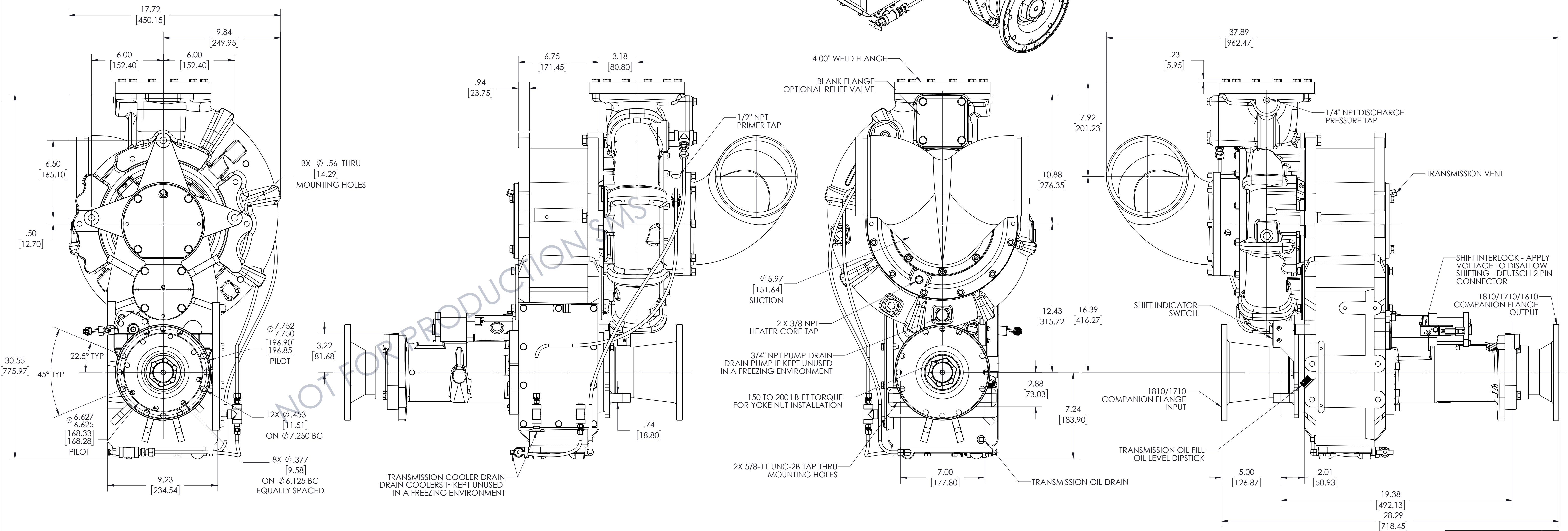
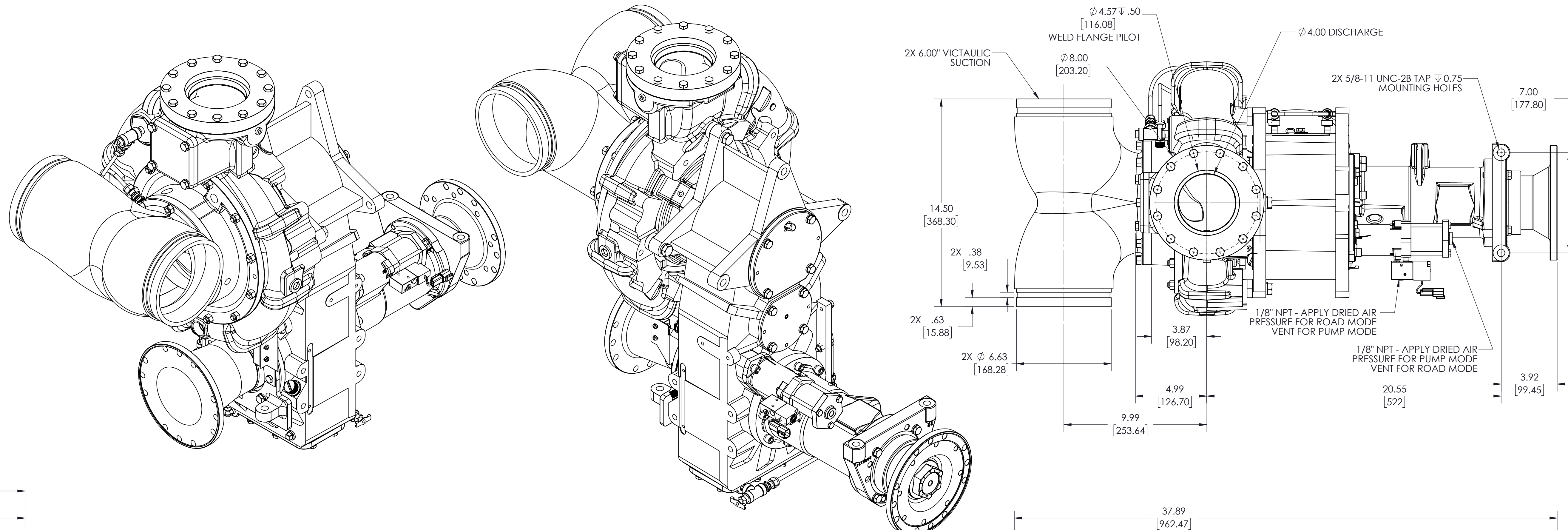


NOTES:
 1) ONLY SHIFT PUMP WHEN DRIVELINE IS NOT SPINNING
 2) APPROXIMATE WEIGHT: 557 LBS [253 KG]

ASSEMBLIES SHOWN:
 CAST IRON PUMP - PT01000
 TRANSMISSION - TM00238
 CAST IRON GEAR CASE - 1804204
 INPUT FLANGE - 4816811
 OUTPUT FLANGE - 4816810
 TRANSMISSION COOLER - AM00401
 TRANSMISSION COOLER - AM00403
 GEAR RATIO 2.12:1 - KR07701
 RV FLANGE - YF00601
 PUMP SHIFT - AH00403
 NO BRAKE - AB00403
 SHIFT INTERLOCK - AH00600
 SUCTION - KC02500
 DISCHARGE FLANGE - YF00141



REMOVE SHARP EDGES		INCH [MILLIMETER]		THIRD ANGLE PROJECTION		OLD PART NO.		TOLERANCE EXCEPT AS NOTED Ø .00 ±.03 .000 ±.010 ANGLES ±1		MODEL DTD1002		SHEET 1/1	
MATERIAL DESCRIPTION		MASS		MATERIAL NO.		PATTERN NO.		DWG - TSM, PUMP FORWARD COMP FLANGES, SWEEP TEE		DATE: 4/22/2020		DTC	
THIS DESIGN IS THE PROPERTY OF WS DARLEY CO. - UNAUTHORIZED REPRODUCTION IS PROHIBITED		557.53 LBS		ALL DIMENSIONS IN INCHES UNLESS NOTED		DO NOT SCALE PRINT		DRWN SMS CKHD WAH TRCD		SCALE: 1:4		DTC	



DWG - TSM, PUMP FORWARD
 COMP FLANGES, SWEEP TEE
 DATE: 4/22/2020
 SCALE: 1:4
 DTD1002