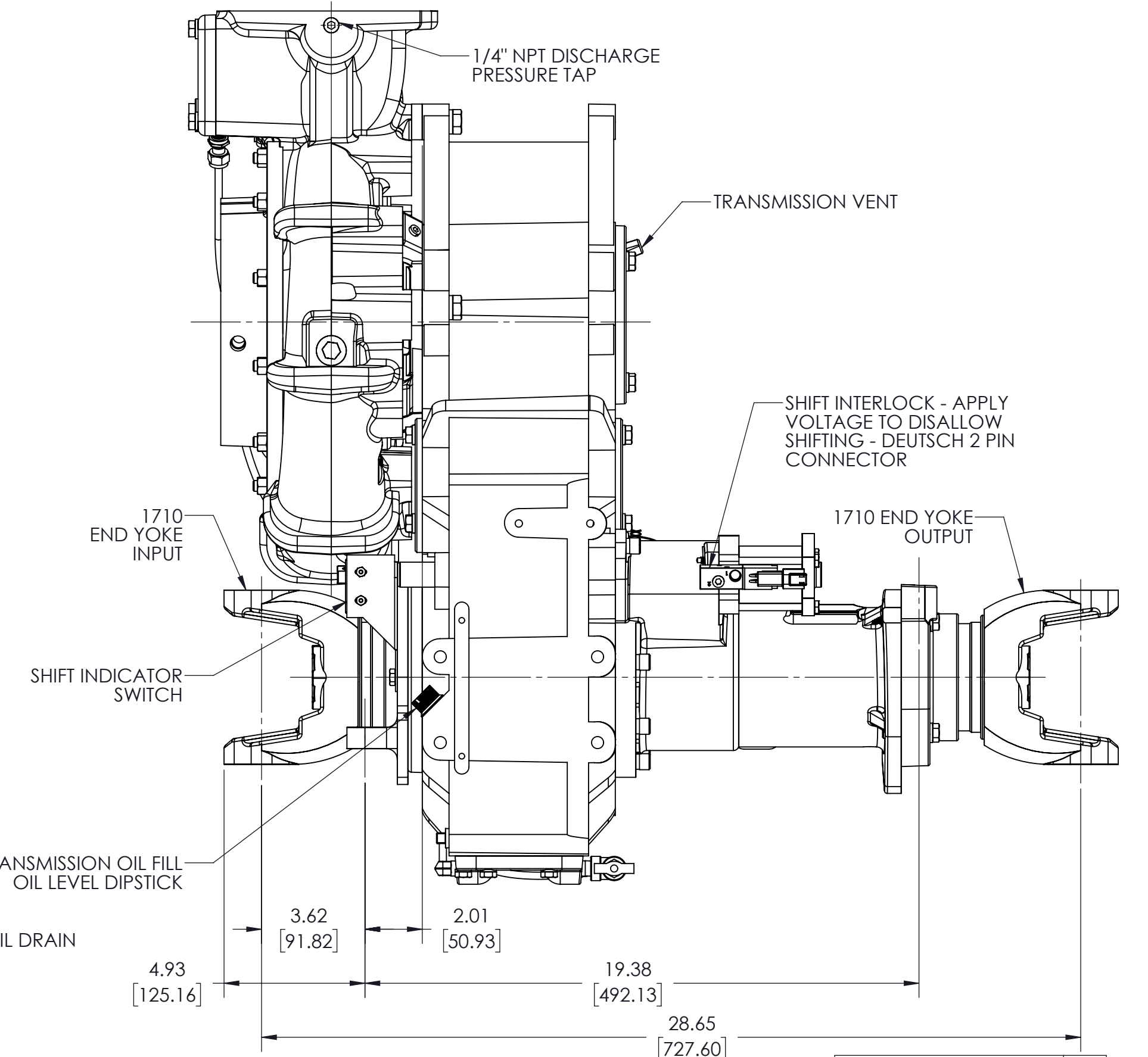
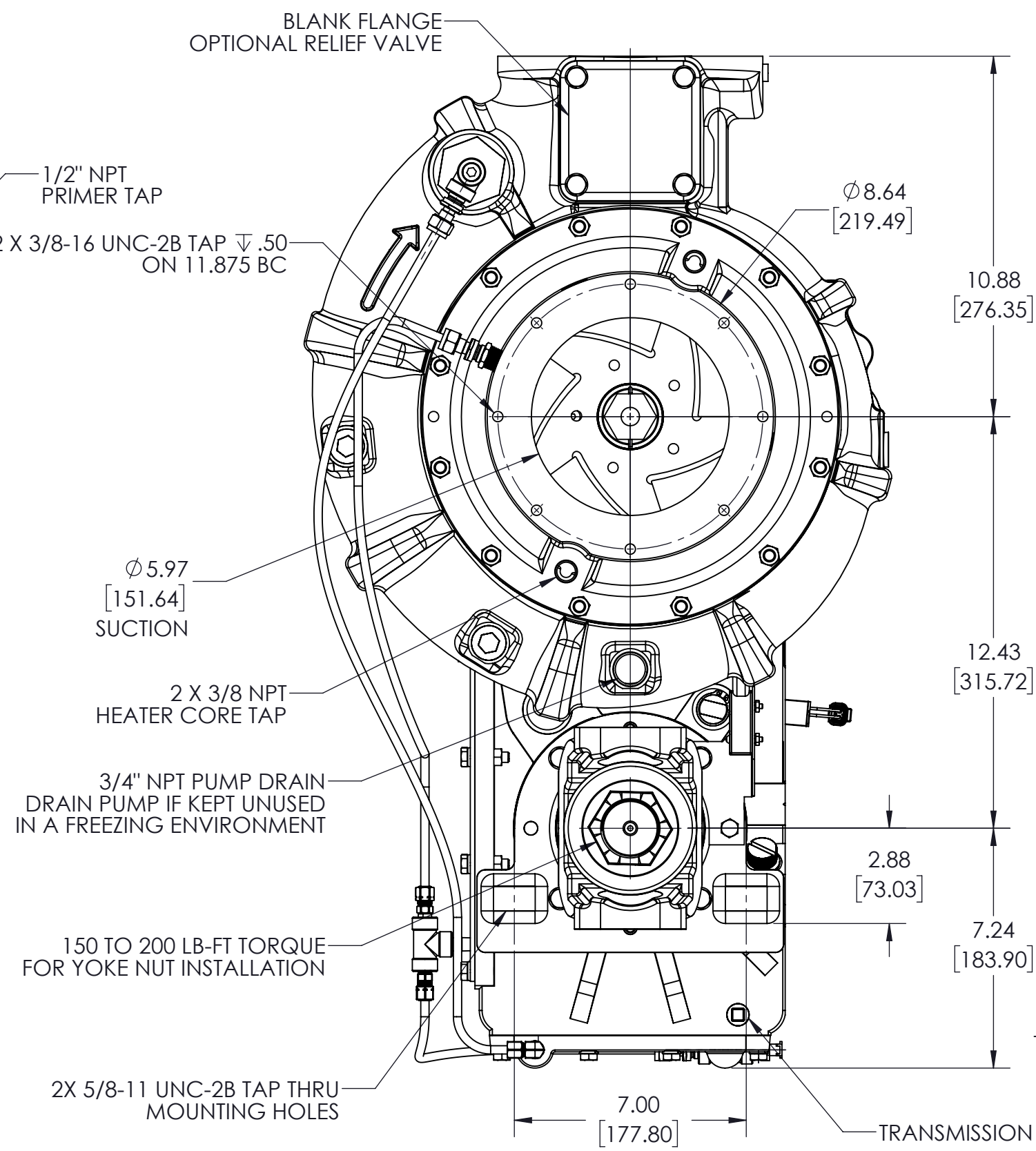
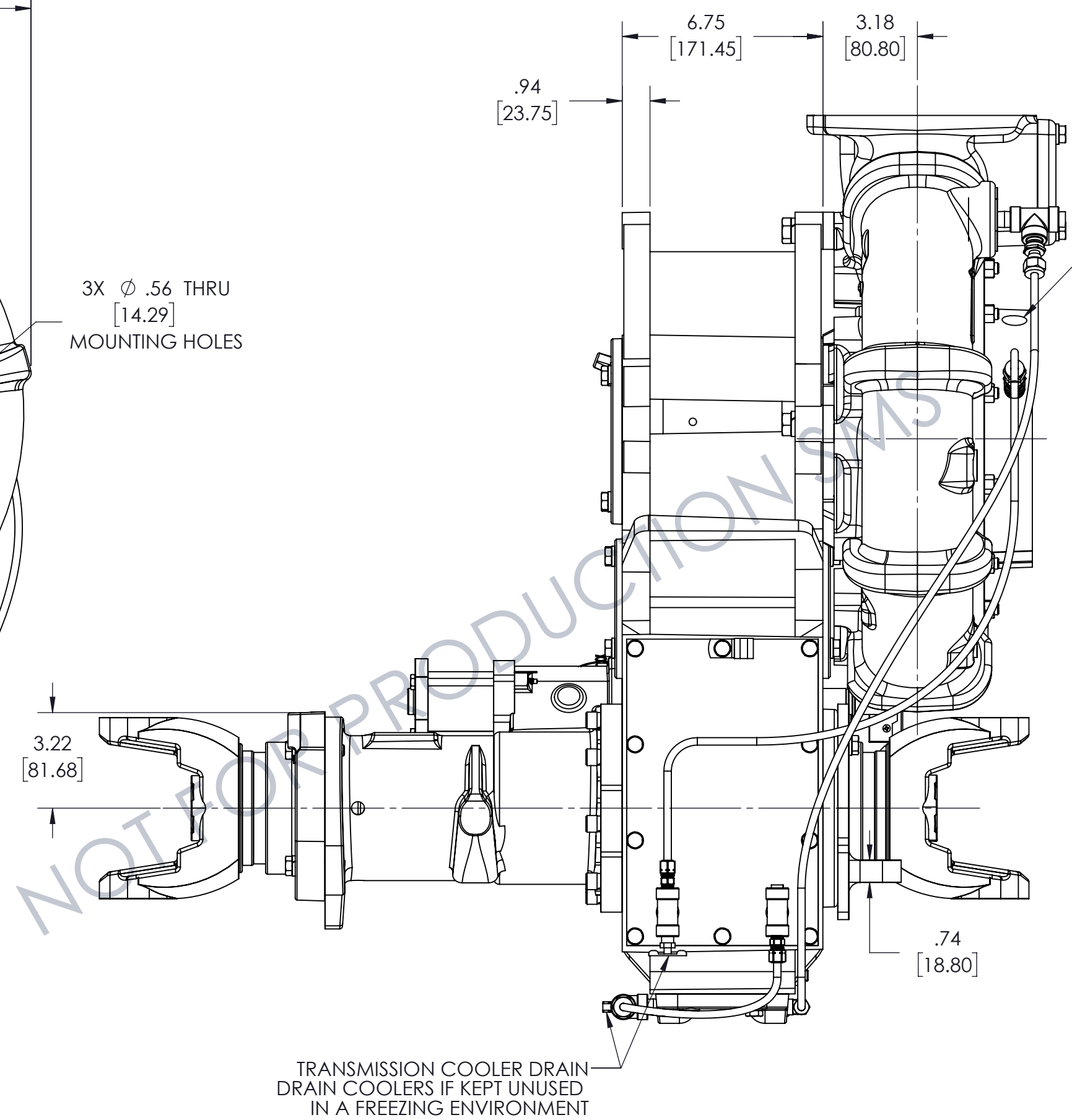
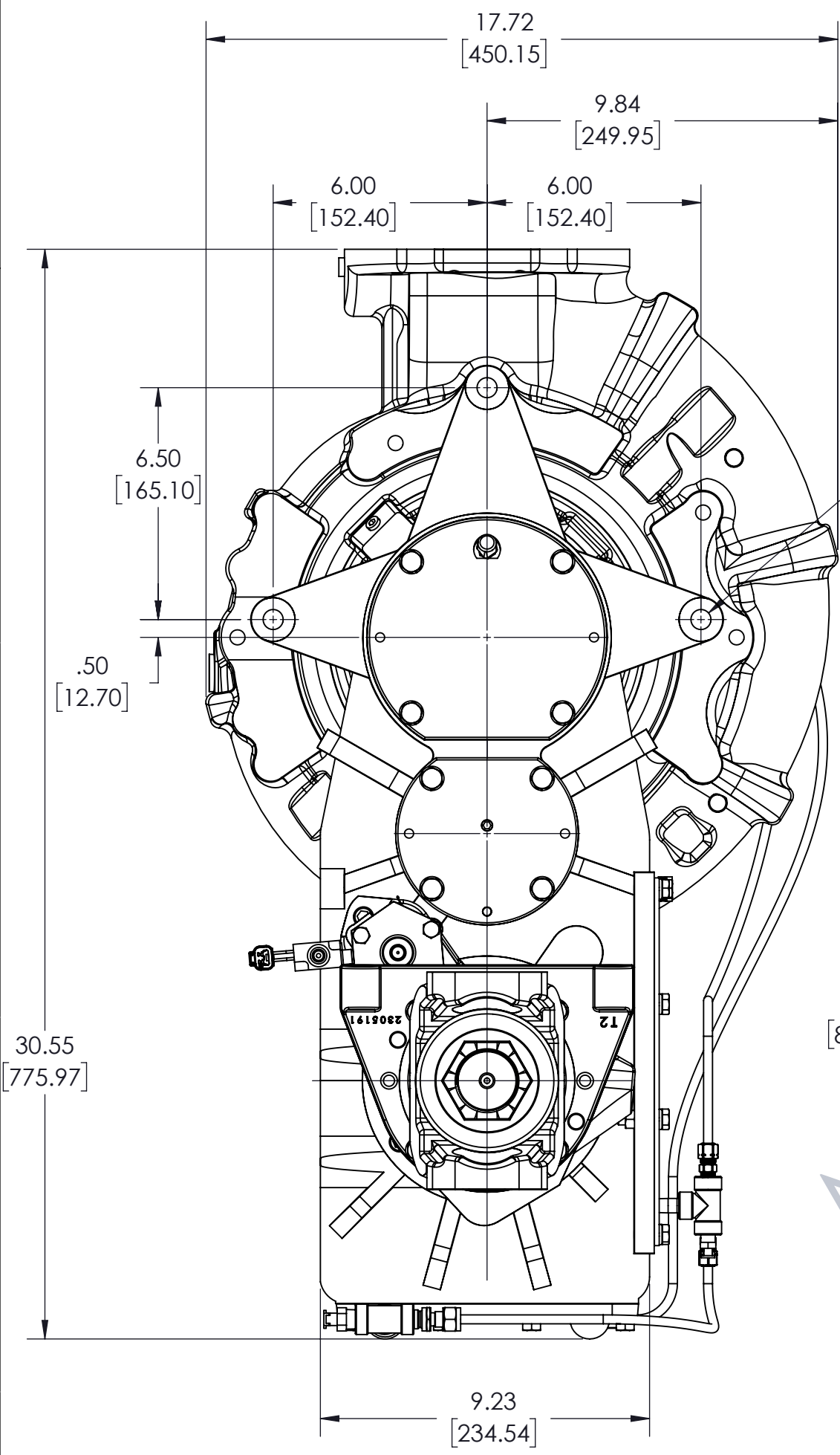
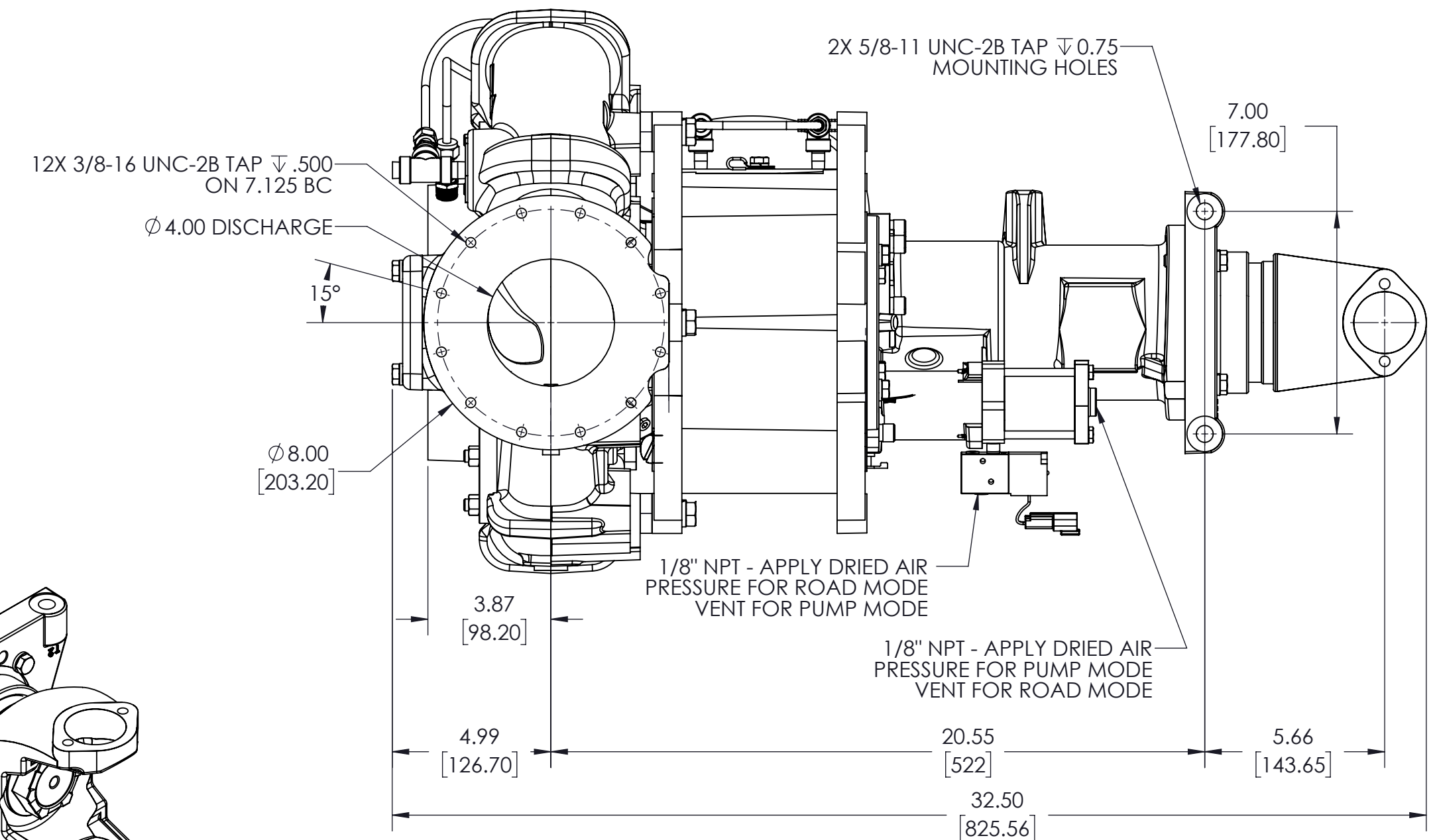
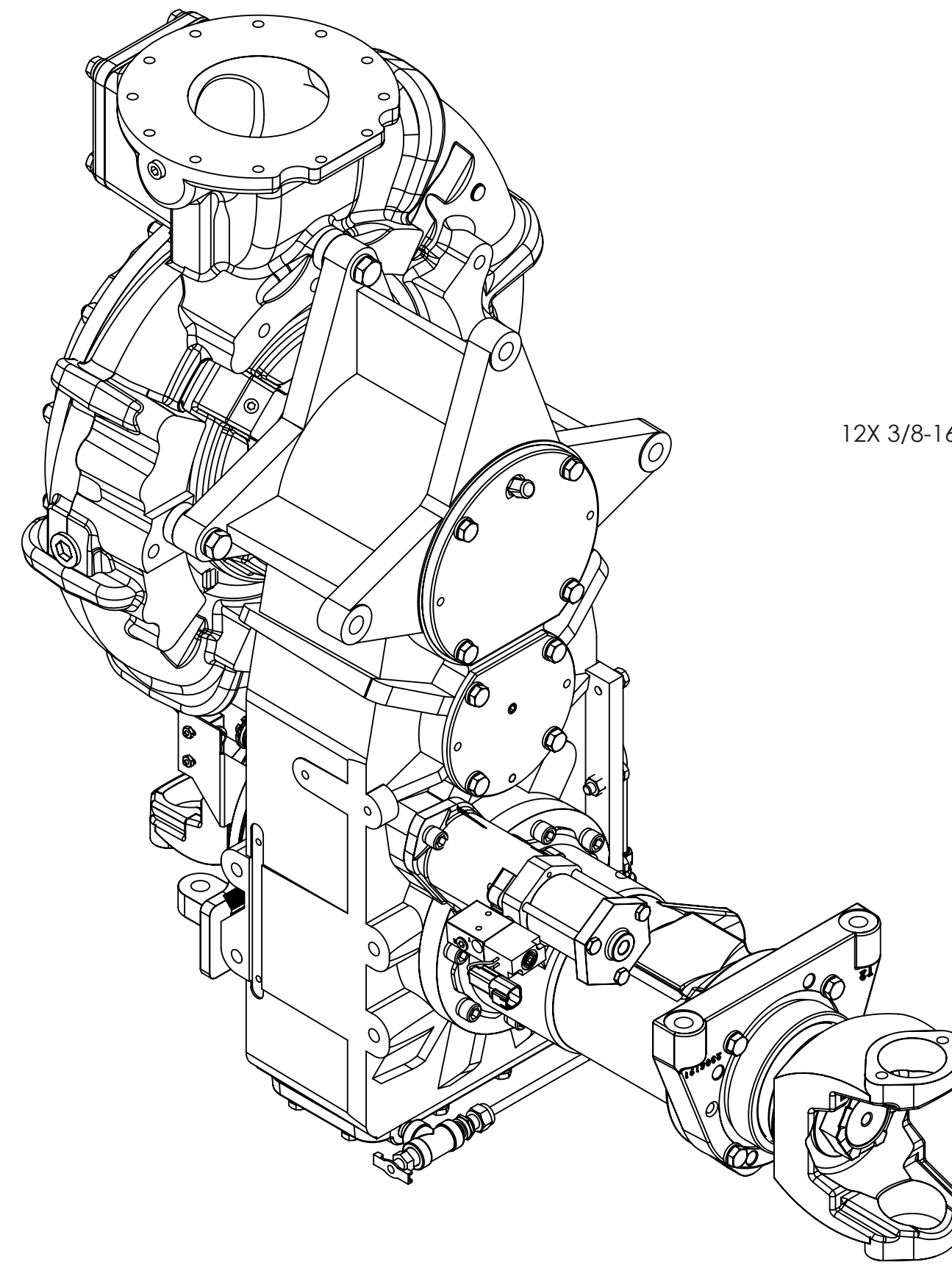
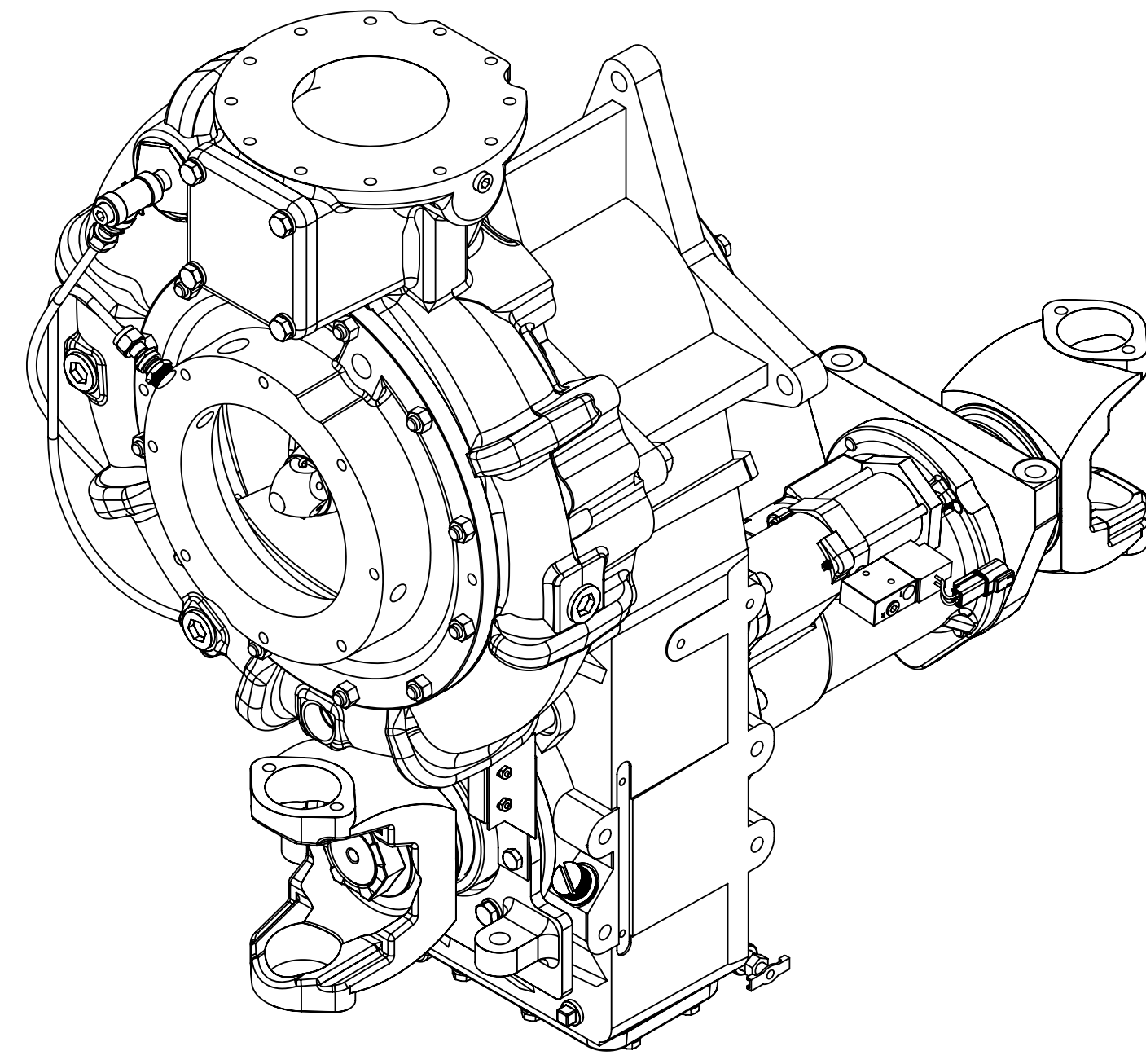


NOTES:  
 1) ONLY SHIFT PUMP WHEN DRIVELINE IS NOT SPINNING  
 2) APPROXIMATE WEIGHT: 506 LBS [229 KG]

ASSEMBLIES SHOWN:  
 CAST IRON PUMP - PT01000  
 TRANSMISSION - TM00238  
 CAST IRON GEAR CASE - 1804204  
 INPUT FLANGE - 4813410  
 OUTPUT FLANGE - 4813410  
 TRANSMISSION COOLER - AM00401  
 TRANSMISSION COOLER - AM00403  
 GEAR RATIO 2.12:1 - KR07701  
 RV FLANGE - YF00601  
 PUMP SHIFT - AH00403  
 NO BRAKE - AB00403  
 SHIFT INTERLOCK - AH00600



THIRD ANGLE PROJECTION		MODEL	SHEET
OLD PART NO.		DTD1001	1/1 D
REMOVE SHARP EDGES	INCH [MILLIMETER]	TOLERANCE EXCEPT AS NOTED	
MATERIAL DESCRIPTION	MASS	.00 ±.03 .000 ±.010 ANGLES ±1	
506.65 LBS	506.65 LBS	DRWN	SMS
THIS DESIGN IS THE PROPERTY OF WS. DARLEY CO. - UNAUTHORIZED REPRODUCTION IS PROHIBITED		CKHD	WAH
ALL DIMENSIONS IN INCHES UNLESS NOTED		DATE:	4/22/2020
DO NOT SCALE PRINT		SCALE:	1:4
		TRCD	DTD1001

