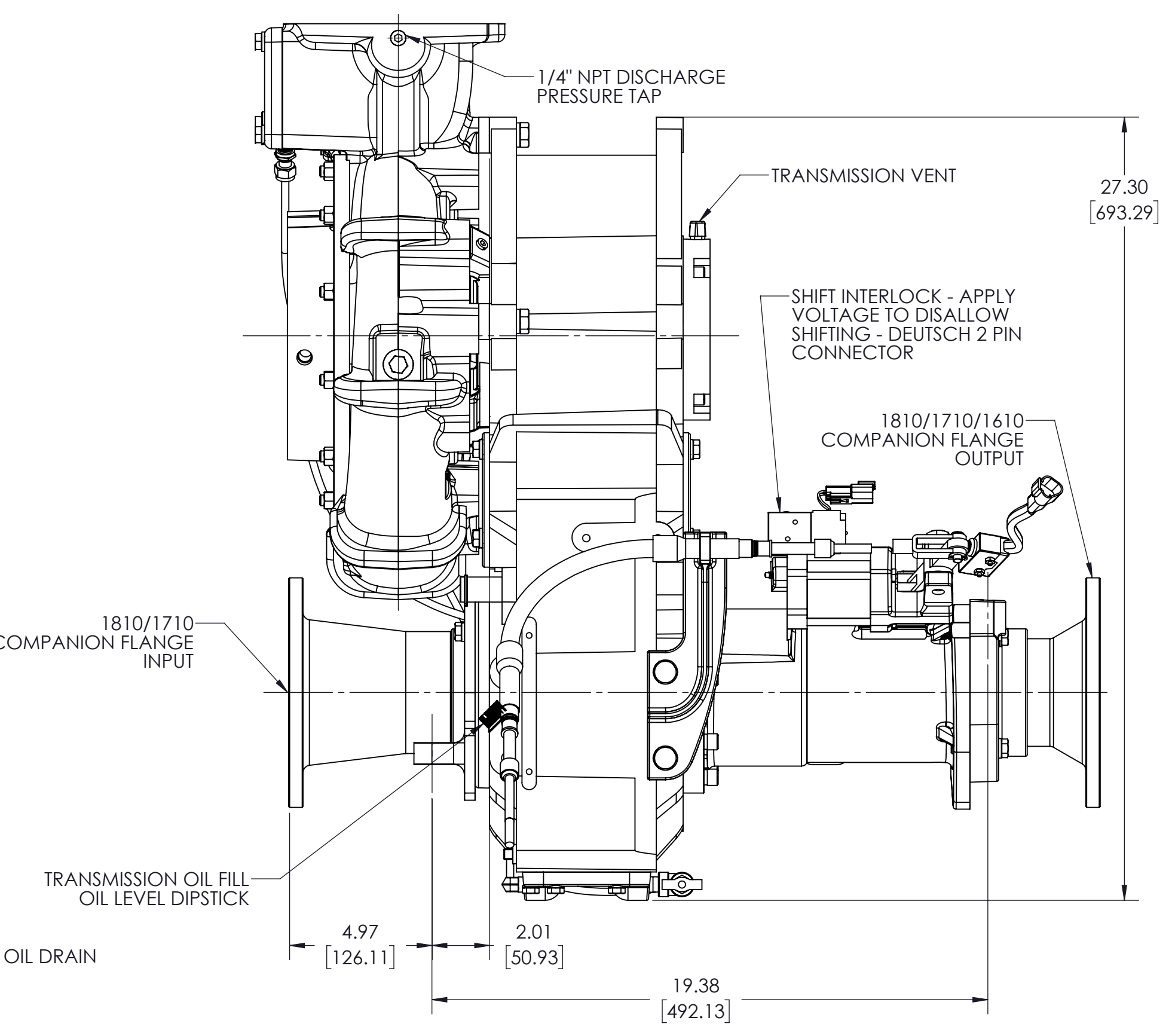
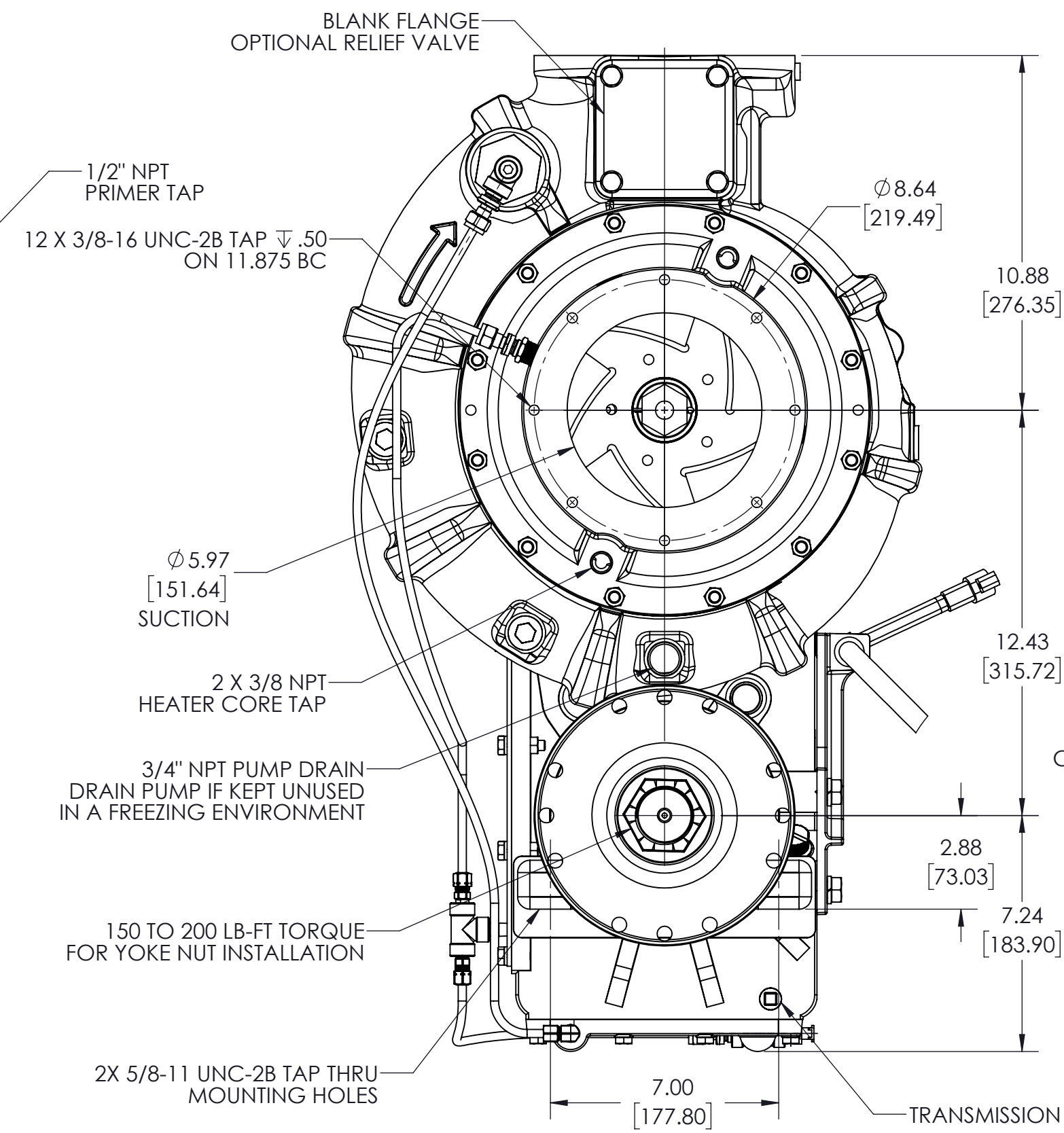
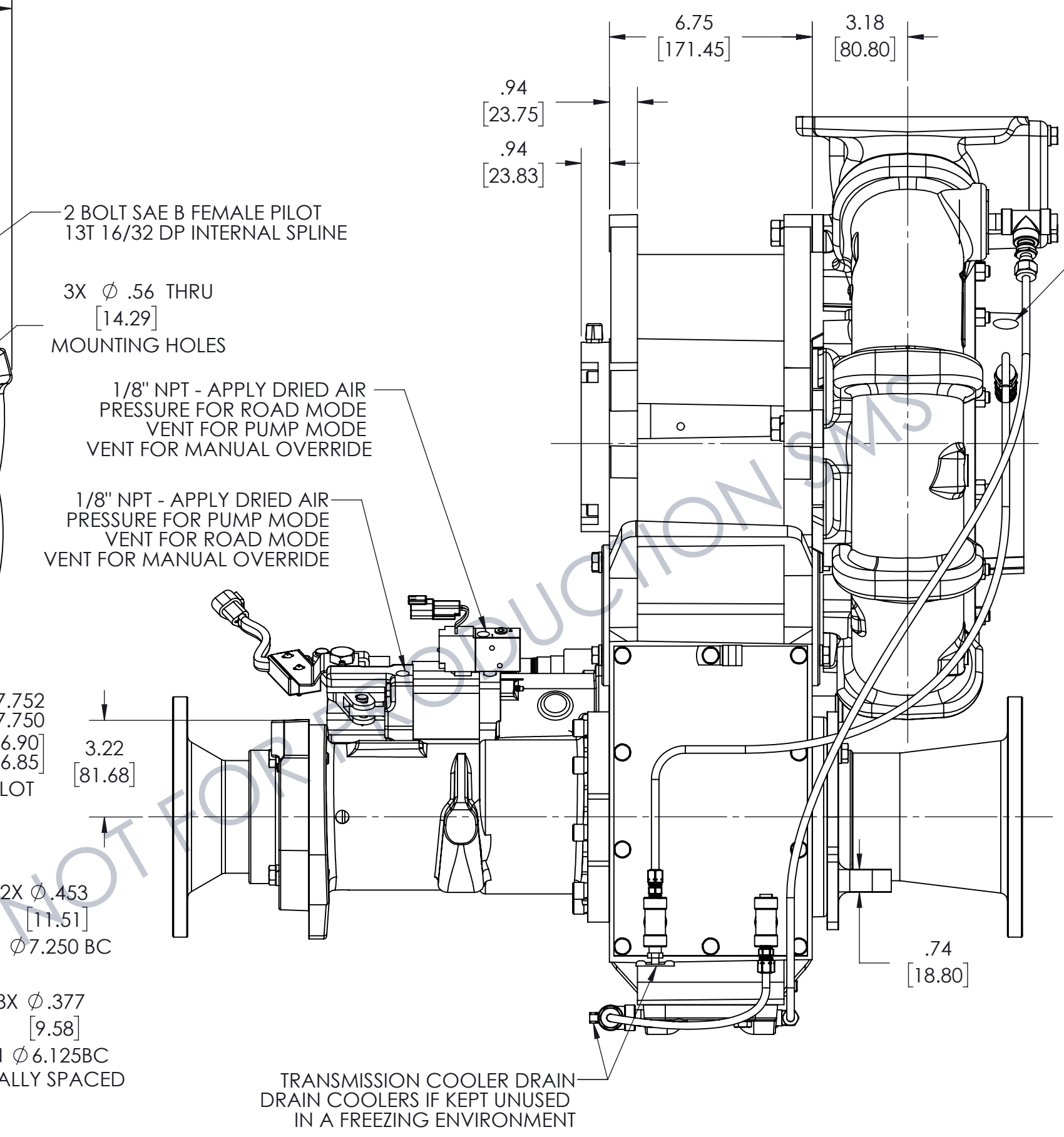
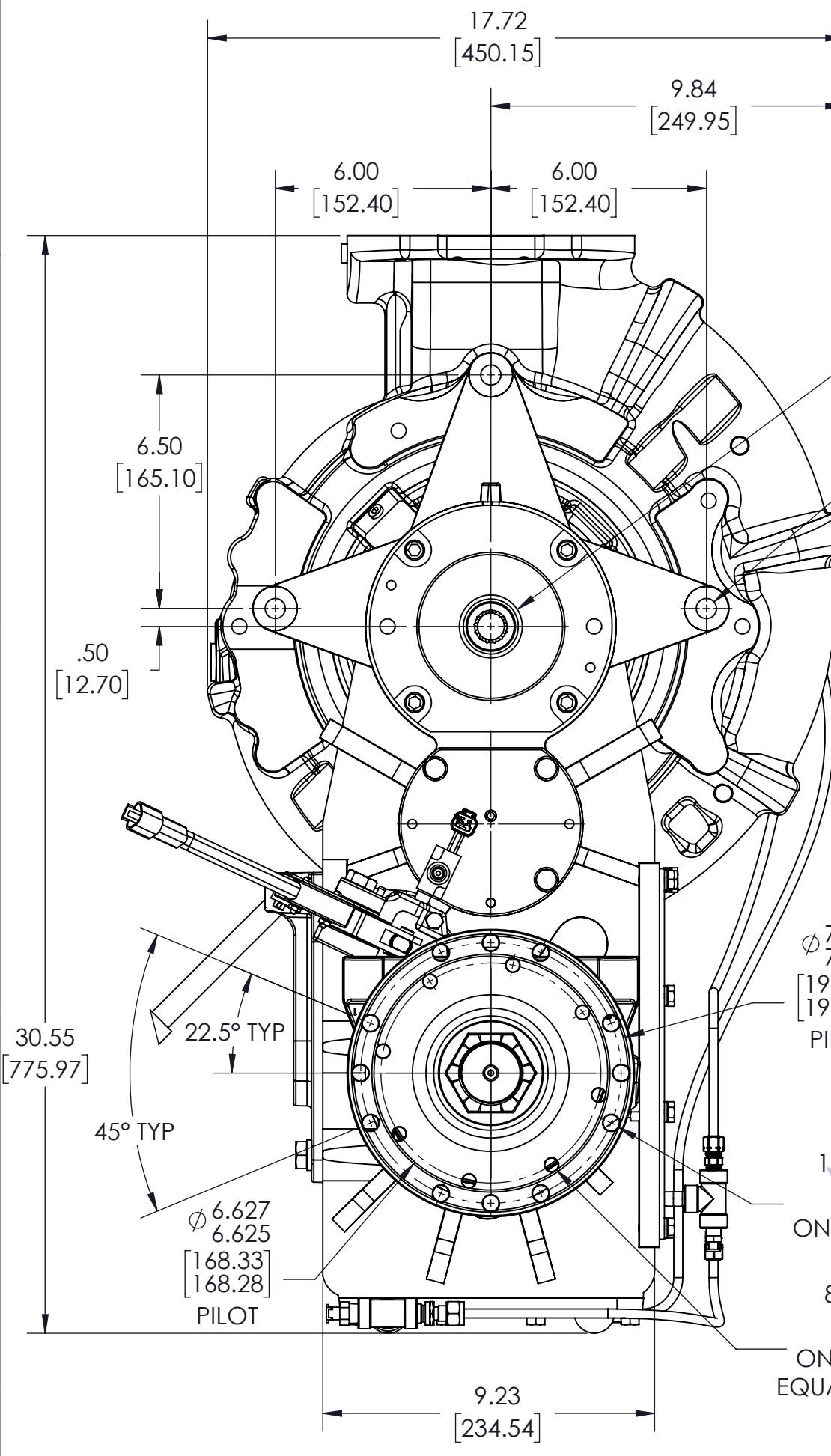
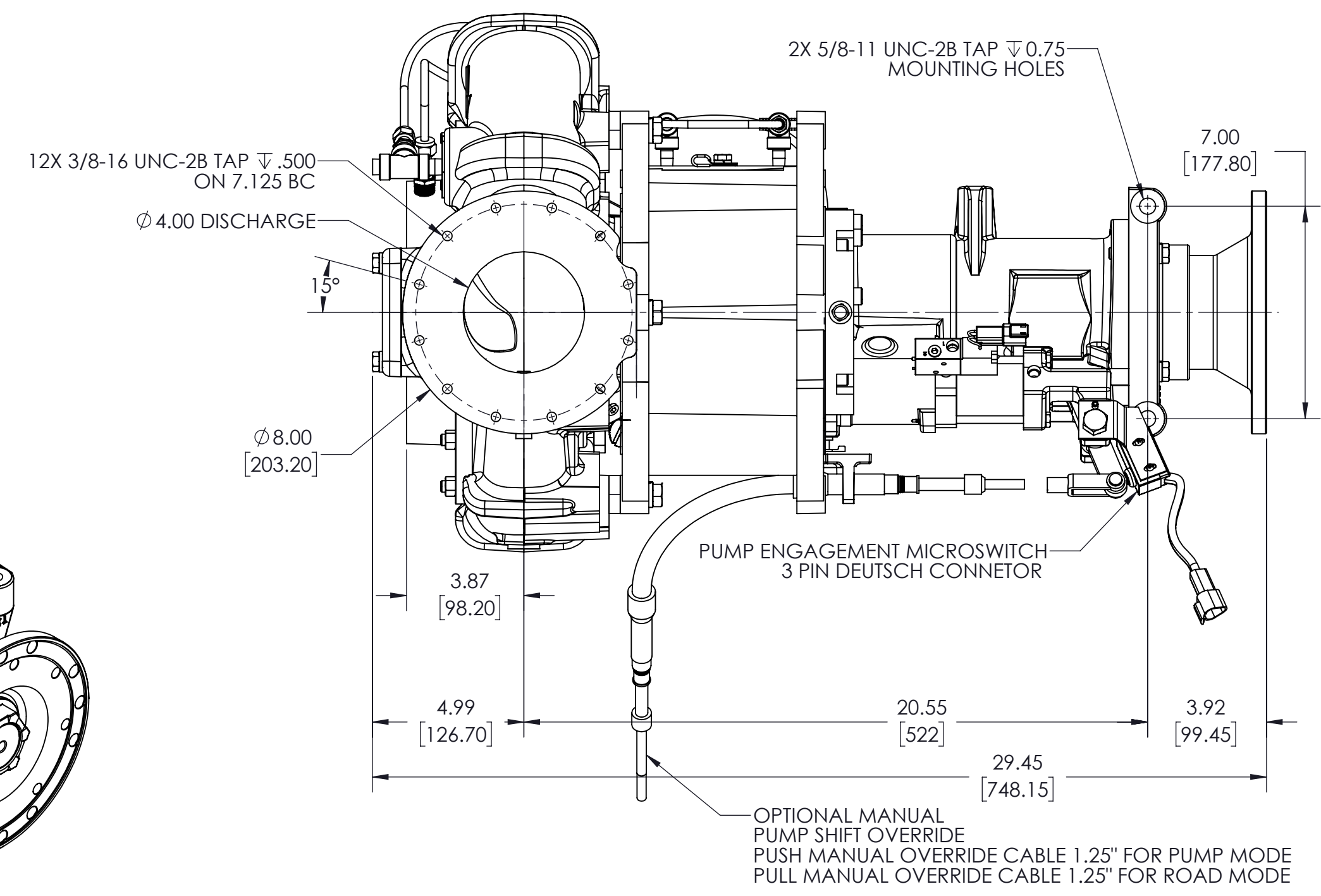
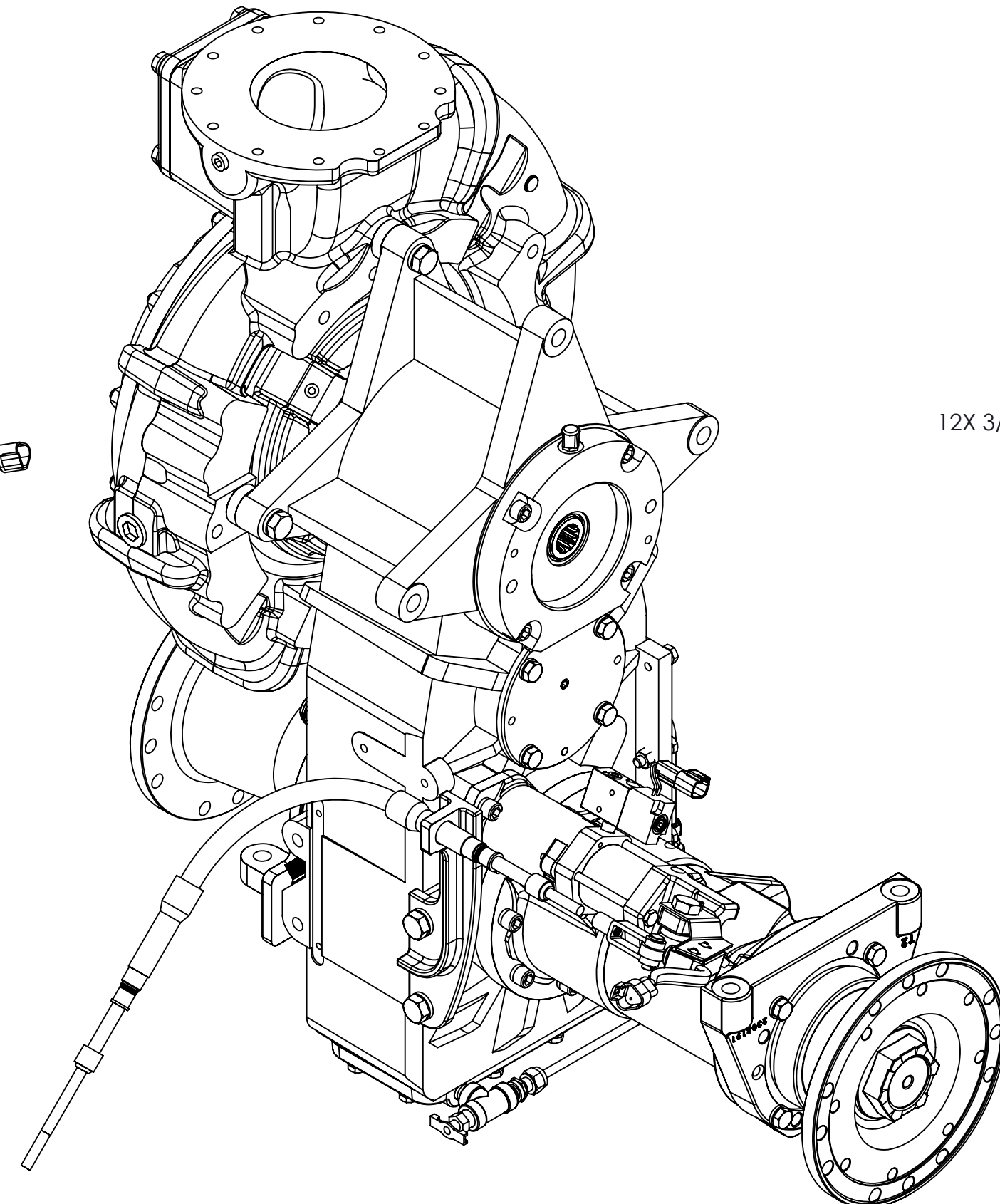
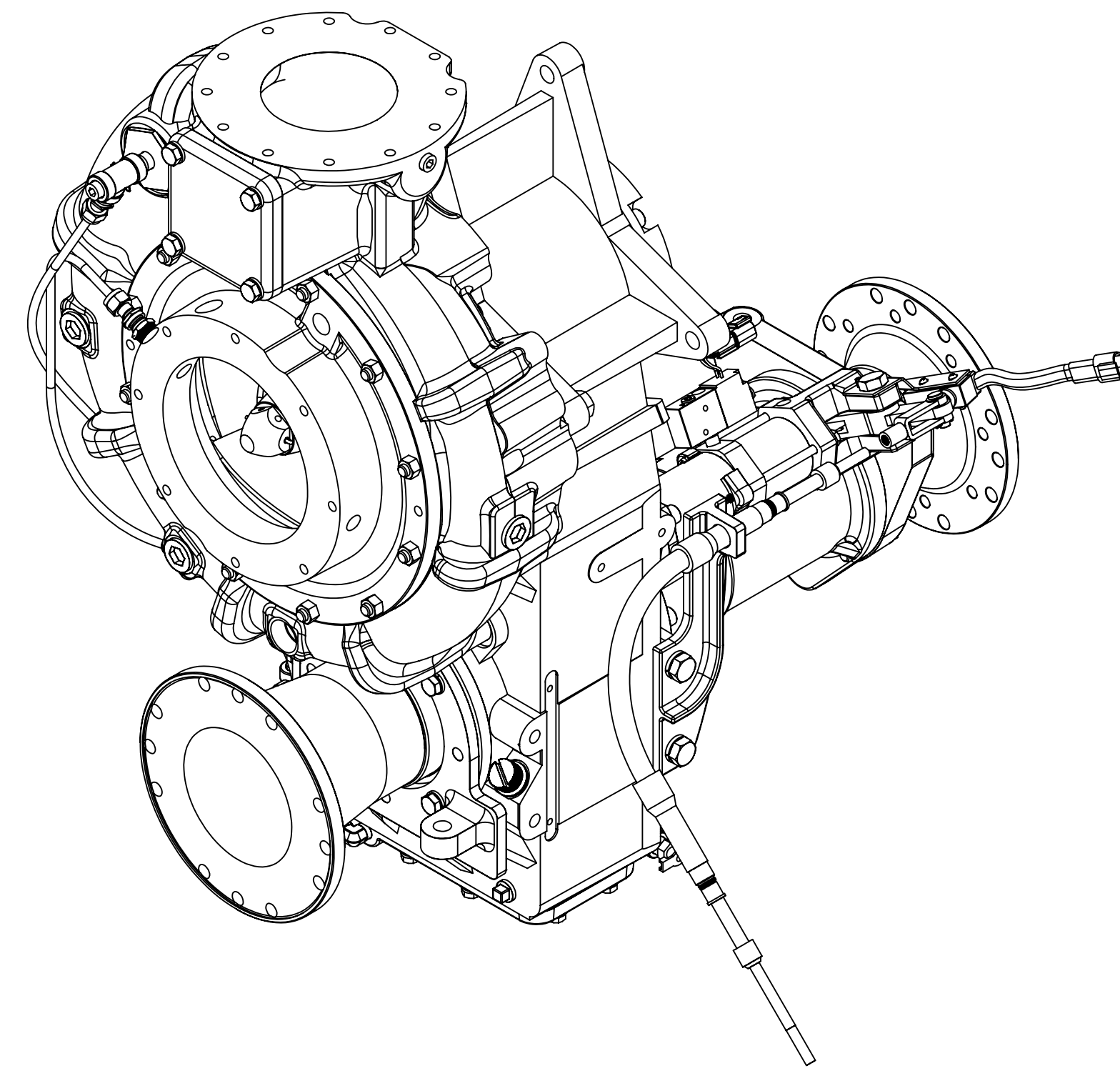


NOTES:  
 1) ONLY SHIFT PUMP WHEN DRIVELINE IS NOT SPINNING  
 2) APPROXIMATE WEIGHT: 510 LBS [231 KG]

ASSEMBLIES SHOWN:  
 CAST IRON PUMP - PT01002  
 TRANSMISSION - TM00237  
 CAST IRON GEAR CASE - 1804204  
 INPUT FLANGE - 4816811  
 OUTPUT FLANGE - 4816810  
 TRANSMISSION COOLER - AM00401  
 TRANSMISSION COOLER - AM00403  
 GEAR RATIO 2.12:1 - KR07701  
 RV FLANGE - YF00601  
 PUMP SHIFT - AH00117  
 PUMP SHIFT - AH00110  
 NO BRAKE - AB00403  
 SHIFT INTERLOCK - AH00600



REMOVE SHARP EDGES		INCH [MILLIMETER]		THIRD ANGLE PROJECTION		OLD PART NO.		TOLERANCE EXCEPT AS NOTED .00 ±.03 .000 ±.010 ANGLES ±1		MODEL DTD1000		SHEET 1/1	
MATERIAL DESCRIPTION		MASS 511.57 LBS		MATERIAL NO.		PATTERN NO.		DWG - TSM, PUMP FORWARD SAE B HYD ADAPT		DATE: 04/03/2020		SCALE: 1:4	
THIS DESIGN IS THE PROPERTY OF WS DARLEY CO. - UNAUTHORIZED REPRODUCTION IS PROHIBITED		ALL DIMENSIONS IN INCHES UNLESS NOTED		DO NOT SCALE PRINT		CKHD WAH TRCD		DATE: 04/03/2020		SCALE: 1:4		DWD1000	

