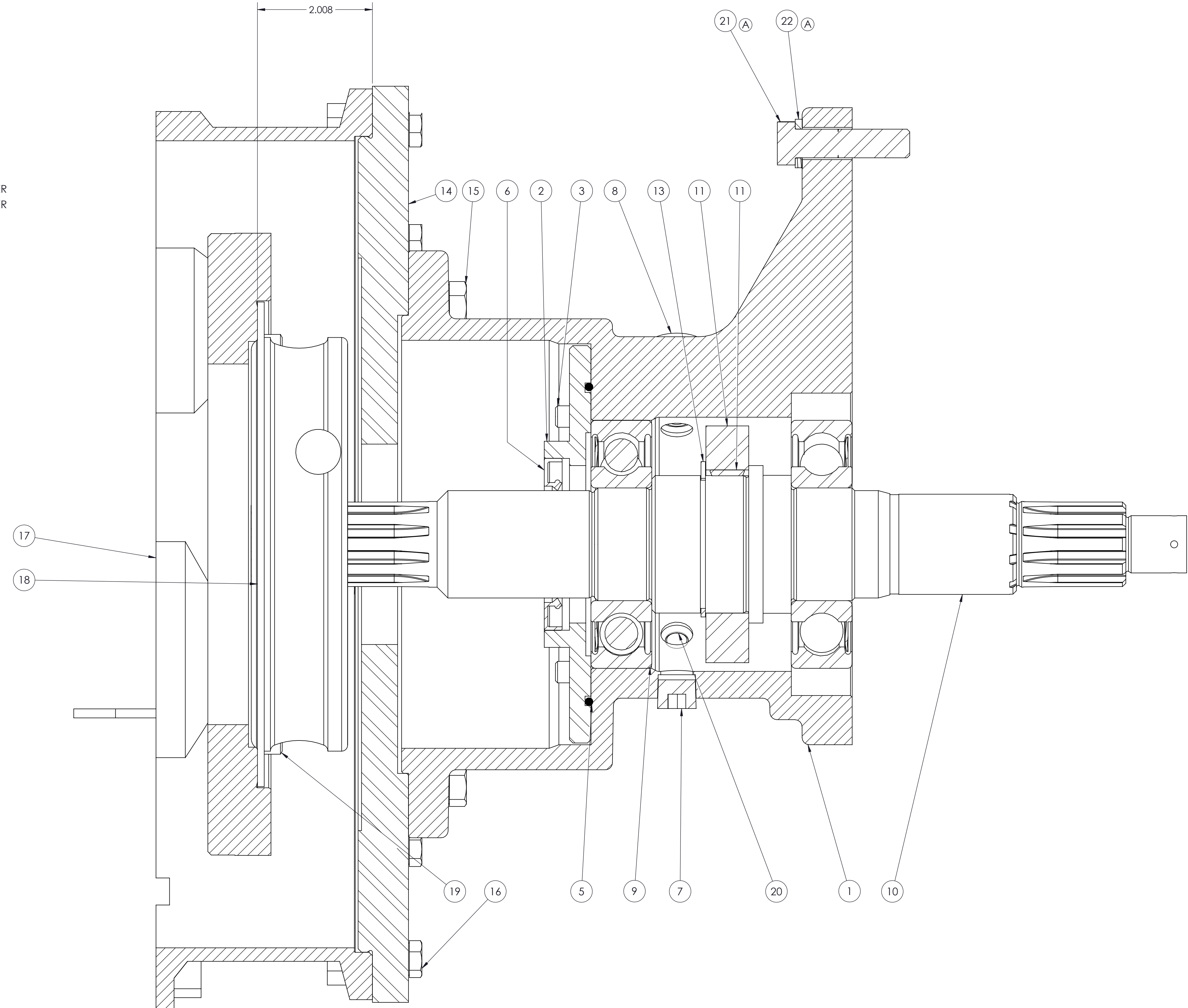
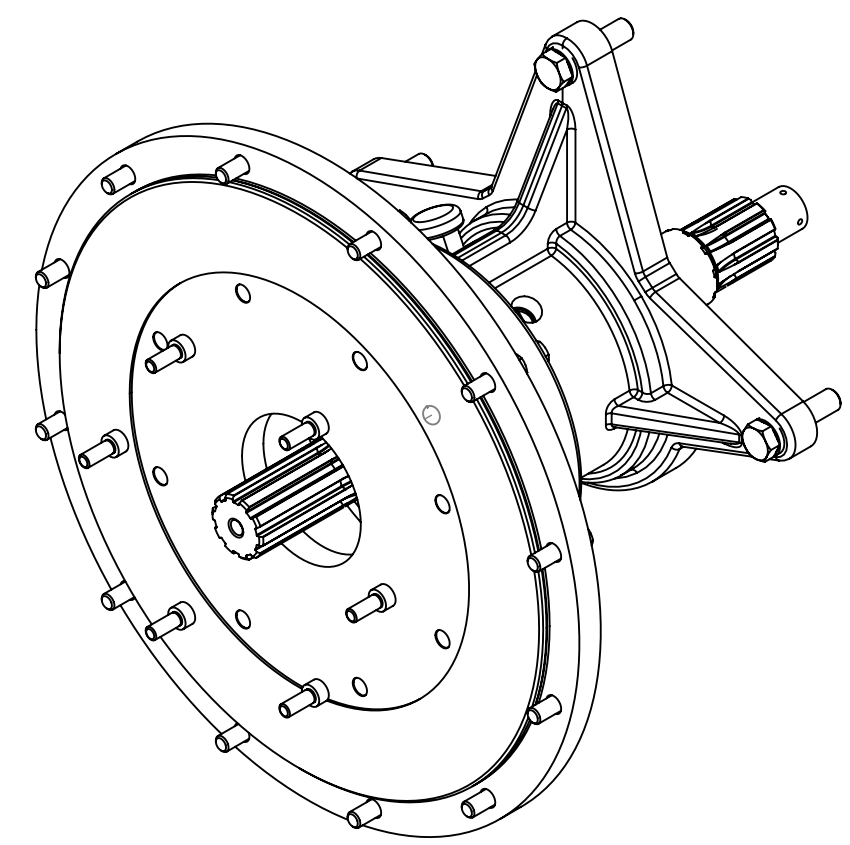


ITEM NO.	File Name	Darley Item Description (Line 1)	QTY.
1	1805820	HOUSING - PSDE	1
2	2305181	RING - RETAINER, BEARING	1
3	5402845	HHCS - FLANGED, .375-16 X 1.00	4
5	3601244	O-RING - 5.37 X 5.62 X 0.12	1
6	3600540	OIL SEAL - 1.875 ID x 3.005 OD	1
7	1080510	PLUG - PIPE, 0.375, MAG SOC HD	1
8	4401800	VENT - GEARCASE	1
9	1722101	BEARING - BALL, 310SF	2
10	5022804	SHAFT - PSDE	1
11	3206002	SLINGER - OIL, PSD, 2.402 ID	1
12	3602201	KEY - WOODRUFF, 605 (#61)	1
13	3600470	RING - RETAINER, 5100-237	1
14	2006301	ADAPTER, ENGINE, SAE #4	1
15	5400067	HHCS - .500-13 x 1.50, GR5	8
16	5400037	HHCS - .375-16 x 1.25, GR5	12
17	BOBTAIL_FOR_SAE4 x 6.5	STEYR SAE 4 X SAE 6.5	1
18	VULKAN 2310-4000-6.5	VULKAN 2310-4000/6.5	1
19	5401200	SHCS - M8-1.25 x 20MM, GR8.8	6
20	1080537	PLUG - PIPE, 0.125, ZINC SOC H	1
21	5400645	HHCS - .500-13 x 2.00, SST	3
22	3603533	WASHER - LOCK, 0.500 ID, SST	3

SUPPLIED BY CUSTOMER  
SUPPLIED BY CUSTOMER

(A)  
(A)

REVISIONS					
ZONE	REV.	DESCRIPTION	DATE	CHG NO.	APPROVED
F10, H4, H5, 2-D4, 2-F10	A	ADD 3X 5400645, ADD 3X 3603533	7/8/2020	12612	MMF

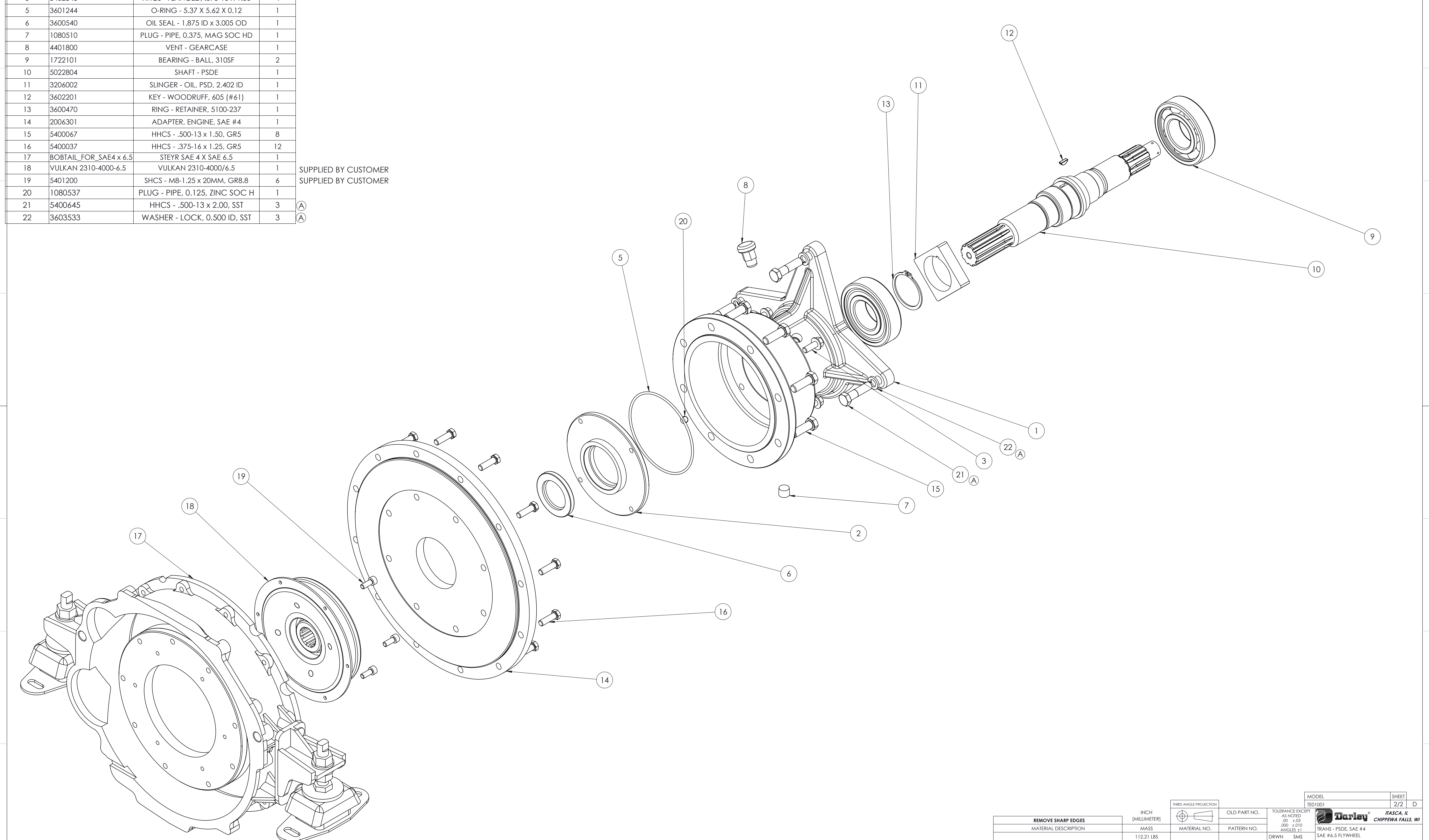


REMOVE SHARP EDGES		THIRD ANGLE PROJECTION		MODEL		SHEET	
MATERIAL DESCRIPTION		OLD PART NO.		TE01001		1/2 D	
MASS		PATTERN NO.		TOLERANCE EXCEPT AS NOTED		Darley ITASCA, IL	
112.21 LBS				.00 ±.03		CHIPPewa FALLS, WI	
THIS DESIGN IS THE PROPERTY OF WS. DARLEY CO. - UNAUTHORIZED REPRODUCTION IS PROHIBITED		DRWN SMS		TRANS - PSDE, SAE #4		SAE #6.5 FLYWHEEL	
ALL DIMENSIONS IN INCHES UNLESS NOTED		CKHD TED		DATE: 10/25/2016		DPC1603	
DO NOT SCALE PRINT		TRCD		SCALE: 1:1			

ITEM NO.	File Name	Darley Item Description (Line 1)	QTY.
1	1805820	HOUSING - PSDE	1
2	2305181	RING - RETAINER, BEARING	1
3	5402845	HHCS - FLANGED, .375-16 X 1.00	4
5	3601244	O-RING - 5.37 X 5.62 X 0.12	1
6	3600540	OIL SEAL - 1.875 ID x 3.005 OD	1
7	1080510	PLUG - PIPE, 0.375, MAG SOC HD	1
8	4401800	VENT - GEARCASE	1
9	1722101	BEARING - BALL, 310SF	2
10	5022804	SHAFT - PSDE	1
11	3206002	SLINGER - OIL, PSD, 2.402 ID	1
12	3602201	KEY - WOODRUFF, 605 (#61)	1
13	3600470	RING - RETAINER, 5100-237	1
14	2006301	ADAPTER, ENGINE, SAE #4	1
15	5400067	HHCS - .500-13 x 1.50, GR5	8
16	5400037	HHCS - .375-16 x 1.25, GR5	12
17	BOBTAIL_FOR_SAE4 x 6.5	STEYR SAE 4 X SAE 6.5	1
18	VULKAN 2310-4000-6.5	VULKAN 2310-4000/6.5	1
19	5401200	SHCS - M8-1.25 x 20MM, GR8.8	6
20	1080537	PLUG - PIPE, 0.125, ZINC SOC H	1
21	5400645	HHCS - .500-13 x 2.00, SST	3
22	3603533	WASHER - LOCK, 0.500 ID, SST	3

SUPPLIED BY CUSTOMER  
 SUPPLIED BY CUSTOMER

REVISIONS					
ZONE	REV.	DESCRIPTION	DATE	CHG NO.	APPROVED
D5	A	ADD 3X 5400645, ADD 3X 3603533	7/9/2020	ED - 12612	MMF



THIRD ANGLE PROJECTION		MODEL	TE01001	SHEET	2/2
REMOVE SHARP EDGES	INCH [MILLIMETER]	OLD PART NO.	TOLERANCE EXCEPT AS NOTED	<b>Darley</b> ITASCA, IL CHIPPEWA FALLS, WI	
MATERIAL DESCRIPTION	MASS	MATERIAL NO.	PATTERN NO.	TRANS - PSDE, SAE #4	
112.21 LBS	112.21 LBS			SAE #6.5 FLYWHEEL	
THIS DESIGN IS THE PROPERTY OF WS. DARLEY CO. - UNAUTHORIZED REPRODUCTION IS PROHIBITED		ALL DIMENSIONS IN INCHES UNLESS NOTED		DRWN	SMS
		<b>DO NOT SCALE PRINT</b>		CKHD	TED
				DATE:	10/25/2016
				SCALE:	3:8
				DPC1603	