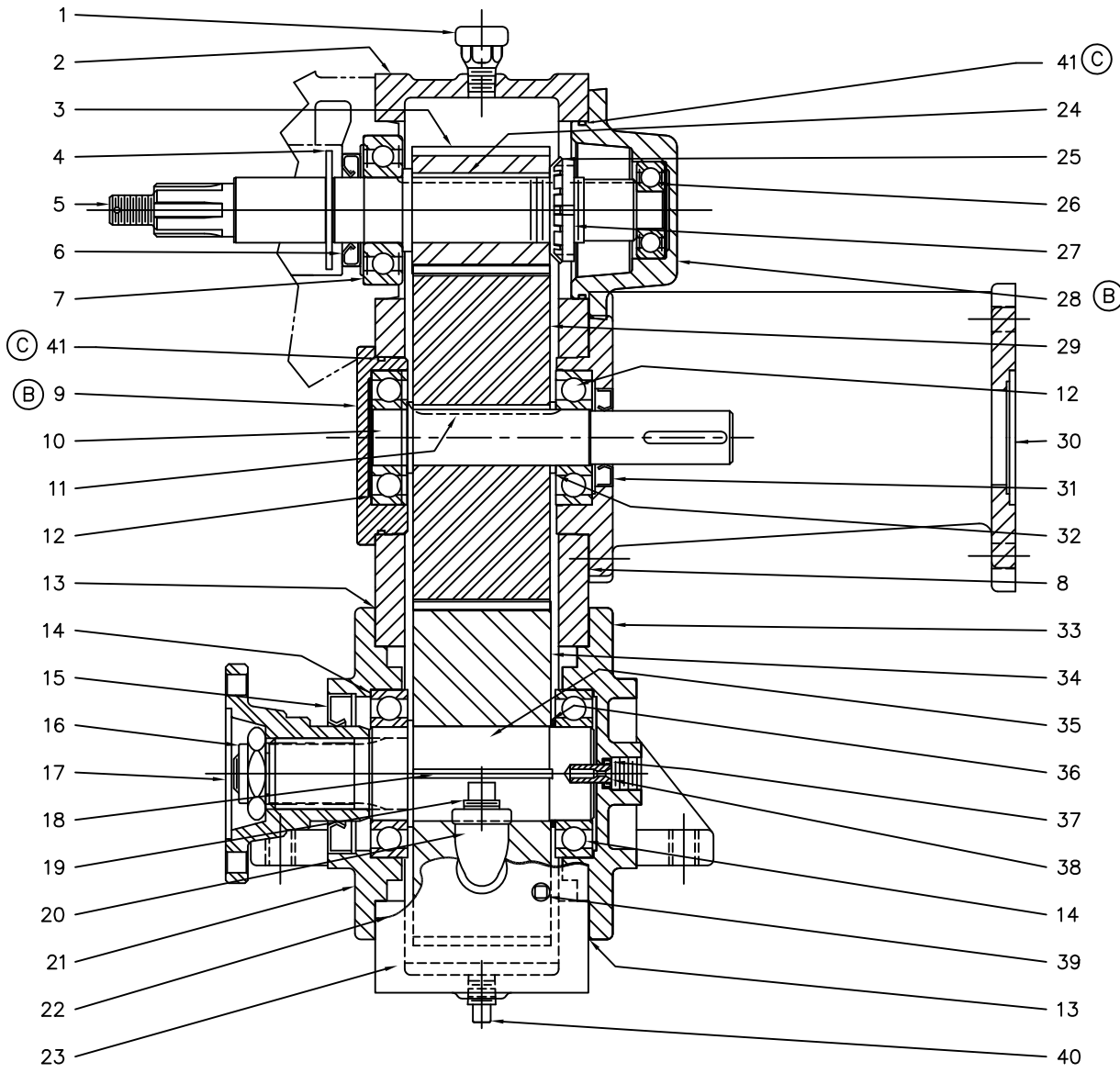



REVISIONS				
LTR	DESCRIPTION	DATE	CHG NO.	APPR'D
A	ADDED NOTE: 125 FT-LB	9/30/08	2008-231	AAN
B	BRG CAP WAS GASKET TYPE	8/18/10	6645	JMB
C	ORING WAS GASKET	8/18/10	6645	JMB



REP#	DESCRIPTION	QTY
1	VENT	1
2	GEARCASE	1
3	PINION GEAR	1
4	WATER SLINGER	1
5	IMPELLER SHAFT	1
6	OIL SEAL	1
7	BEARING	1
8	GASKET	3
9	BEARING CAP	1
10	OUTPUT SHAFT	1
11	IDLER KEY	1
12	BEARING	2
13	GASKET	2
14	BEARING	2
15	OIL SEAL	1
16	FLANGE NUT - 125 FT-LB (A)	1
17	COMPANION FLANGE	1
18	DRIVE GEAR KEY	1
19	OIL FILL PLUG	1
20	STREET ELBOW	1
21	FRONT BEARING BRACKET	1
22	COVER GASKET	1
23	COVER	1
24	PINION KEY	1
25	BEARING LOCKWASHER	1
26	BEARING	1
27	BEARING LOCKNUT	1
(B) 28	BEARING CAP	1
29	IDLER GEAR	1
30	BEARING BRACKET	1
31	OIL SEAL	1
32	IDLER GEAR SPACER	1
33	REAR BEARING BRACKET	1
34	DRIVE GEAR	1
35	TRANSMISSION SHAFT	1
36	DRIVE GEAR SPACER	1
37	OIL SEAL, TACHOMETER SHAFT	1
38	TACH DRIVE NUT	1
39	OIL LEVEL PLUG	1
40	OIL DRAIN PLUG	1
(C) 41	ORING	2

MATERIAL DESCRIPTION: -		MATERIAL NO. -	PATTERN NO. -	 OLD PART NO. K727 TOLERANCE EXCEPT AS NOTED FRAC DIM ±.01 .00 ±.01 .000 ±.005 ANGLES ±1°	W.S. DARLEY & CO. MELROSE PARK, IL - CHIPPEWA FALLS, WI DWG - KSPA, TRANSMISSION CROSS SECTION DATE DEC16,94 SCALE 1/2
THIS DESIGN IS THE PROPERTY OF W.S. DARLEY AND CO. - UNAUTHORIZED REPRODUCTION IS PROHIBITED		ALL DIMENSIONS IN INCHES UNLESS NOTED		DO NOT SCALE PRINT	DKC1401