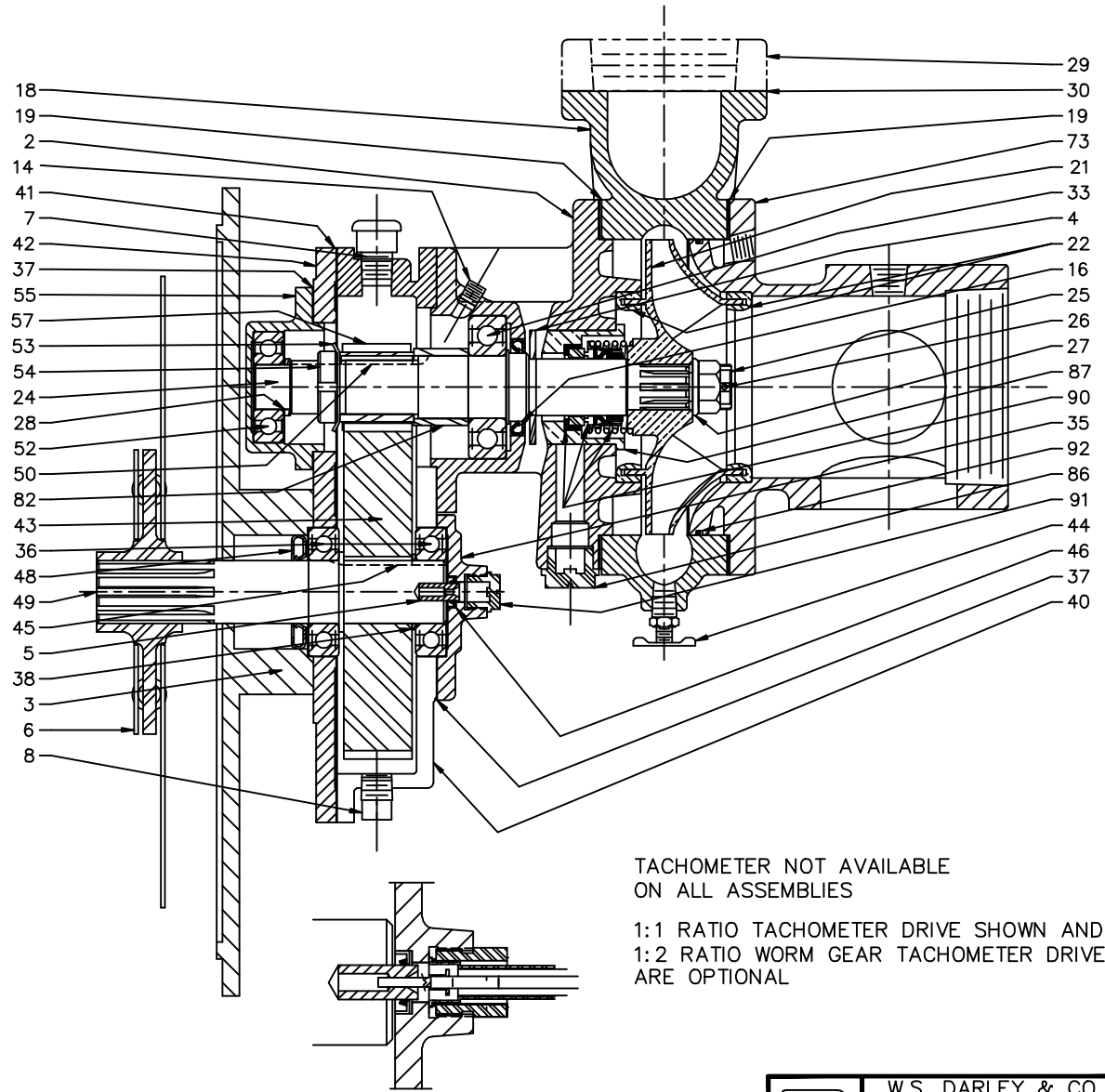


REP#	NAME OF PART	QTY
2	INBOARD HEAD	1
3	ENGINE ADAPTER	1
4	WATER SLINGER	1
5	CABLE DRIVE NUT	1
6	DRIVE FLANGE	1
7	OIL FILL VENT -3/8 NPT	1
8	OIL DRAIN PLUG-3/8 NPT - MAGNETIC	1
14	PLUG-1/8 NPT	1
16	OIL SEAL - PUMP SHAFT	1
18	VOLUTE	1
19	PUMP CASING GASKET	2
21	IMPELLER	1
22	SEAL RING	2
24	IMPELLER SHAFT	1
25	IMPELLER NUT	1
26	COTTER KEY - S.S.	1
27	IMPELLER WASHER	1
28	BEARING BACKUP WASHER	1
29	DISCHARGE (REF)	1
30	GASKET-DISCHARGE (REF)	1
33	BEARING	1
35	BEARING CAP	1
36	BEARING	2
37	BEARING CAP GASKET	2
38	SPACER BUSHING	1
40	GEAR CASE	1
41	GEAR CASE GASKET	1
42	GEAR CASE COVER	1
43	DRIVE GEAR	1
44	DRAIN COCK-1/4 NPT	1
45	GEAR KEY	1
46	OIL SEAL-TACH	1
48	OIL SEAL	1
49	DRIVE SHAFT	1
50	PINION KEY	1
52	BEARING	1
53	BEARING LOCKWASHER	1
54	BEARING LOCKNUT	1
55	BEARING CAP	1
57	PINION GEAR	1
73	OUTBOARD HEAD	1
82	SPACER BUSHING	1
86	PLASTIC PLUG - PACKING GLAND OPENING	1
87	STUFFING BOX	1
90	MECHANICAL SEAL	1
91	PLASTIC DUST PLUG - TACH.	1
92	O'RING - SUCTION HEAD	1




TACHOMETER NOT AVAILABLE
ON ALL ASSEMBLIES

1:1 RATIO TACHOMETER DRIVE SHOWN AND
1:2 RATIO WORM GEAR TACHOMETER DRIVE
ARE OPTIONAL

TACHOMETER DRIVE DETAIL

OLD PART NO.
H452

	W.S. DARLEY & CO.		DHC0601
	MELROSE PARK, IL - CHIPPEWA FALLS, WI		
DRN	TED	DATE FEB 7, 94	SCALE 1/2
CHKD			
TRCD			

THIS DESIGN IS THE PROPERTY OF
W.S. DARLEY AND CO. - UNAUTHORIZED
REPRODUCTION IS PROHIBITED

ALL DIMENSIONS IN
INCHES UNLESS NOTED

DO NOT SCALE PRINT