

W.S. Darley & Co.

TRUSTED WORLDWIDE SINCE 1908



Pump Plant & Engineering

1051 Palmer Street
Chippewa Falls, WI 54729
Phone 800-634-7812
Fax 715-726-2656

Pump Sales & Corporate

325 Spring Lake Dr.
Itasca, IL 60143-2072
Phone (708) 345-8050
Fax (708) 345-8993

Date: _____

Bill To: _____

P.O. No.: _____

Customer No.: _____

Order Completed By: _____

Desired Delivery Date: _____

End Customer: _____

Customer Contact:

Tel No.: _____

Fax No.: _____

Email: _____

Ship To: _____

PUMP ORDER FORM

HM PUMP

Please review the order form before starting. If any challenges arise, please call our Customer Service Department at (800) 634-7812 for assistance. We will be glad to help. Please fill in the information **completely**.

Rated capacity: GPM 250 350 500
 LPM 1000 1300 2000

*If special testing is required, please indicate your need.

Imperial Gallons (List Capacity) _____

Liters per Minute (List Capacity) _____

Other (Specify) _____

CHASSIS INFORMATION

Chassis make: _____ Transmission Make: _____
Model: _____ Model: _____
Engine: _____ Color: _____
HP: _____ Altitude: _____ FT.
@ _____ RPM Body Width: 66" 70" 72"
Electrical system: 12V 24V

PTO INFORMATION

PTO Model: _____ PTO Location: (check one)
PTO % of Engine Speed: _____ Driver's Side Passenger's Side
Intermittent Torque Rating: _____ PTO Rotation: (check one):
_____ FT. / LBS. Engine Rotation
 Opposite engine rotation

PUMP RATING

NFPA 1901 Fire Pump
 Other: _____

(Options, Fill in choices to select option)

Primary water type: Salt water Fresh water

Pump material: Cast Iron Bronze (Recommended for salt water)
 Aluminum (Only available in HM1 assembly)

Seal type: Packing Mechanical Seal

Electric Primer: 12V 24V None

Primer type: Fluid Fluid less

Behind-the-Panel 4" Butterfly Valve:

Hand wheel Operated **OR** Electric Actuated

Manual Vented **OR** Automatically Vented

Inline 4" Butterfly Valve:

Hand wheel Operated **OR** Electric Actuated

Manual Vented **OR** Automatically Vented

Universal Joint:

Yoke Only Assembly Only

Discharge Valves: (shipped loose)

2-1/2" NST Straight Nipple 2-1/2" NST 30° Down Nipple

Suction Valves: (shipped loose)

2-1/2" NST Female 2-1/2" NST Female "Full Flow"

- 3/4" Valve Drains** (available on suction or discharge valves)
- Pressure Relief Valve with Remote Control and Pilot Light**
- Suction Relief Valve with Remote Control**
- Electric Tachometer, Speed Counter, and Cable for HM500**
- Master Drain Valve (8 openings)**
- Isolated Ports Multiple Drain (6 openings)**
- Pump Overheat Protection System**
- Supplementary Engine Cooling Heat Exchanger**
- Trim Plates for Discharge Valves, Suction Valves, and Remote Control Levers**
- Heavy Duty Gear for Ratios Above 3.95**
- Vision Series Panel Markers**
- Remote Control for Curb Side Valves**
- Remote Packing Adjustment Cable**
- Pump Engaged Indicator Light and Panel Decal**
- 4" Tank to Pump Inline Check Valve** (Shipped Loose)
- Hand Speed Counter and Cable for HM500**
- 2" Tubular Drive Shaft and 2 Universal Joints**
- 3" NST Suction Nipples, Screens, and Caps for HM350**
- 4" NST Suctions Nipples, Screens, and Caps for HM500**



HM PUMP ORDER FORM

CHECK BOX FOR APPROPRIATE CHOICE OF EACH:

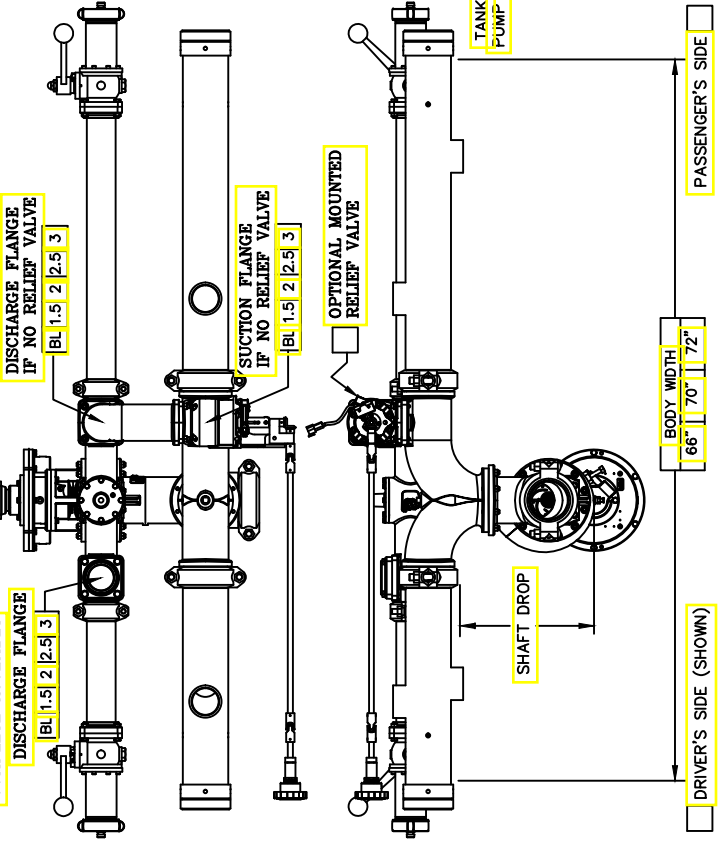
- 2.5" NPT
- 3" NPT
- 3" VICTAULIC
- 3" BSP

- #1 CONFIGURATION: SUPPLIED WITH NPT SUCTION AND DISCHARGE FLANGES

- 3" NPT
- 4" NPT
- 3" BSP
- 4" BSP
- 4" VICTAULIC

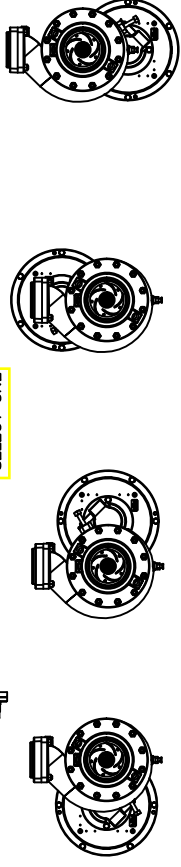
1. SELECT PUMP CONFIGURATION. (#1, #2, OR #3)
NOTE: IF CHOOSING #2, SELECT THE REQUIRED BODY WIDTH AND DRIVER'S OR PASSENGER'S SIDE.
2. SELECT GEARCASE POSITION.
3. INDICATE THE NUMBER OF DISCHARGE AND/OR SUCTION SPACERS REQUIRED.

#3 CONFIGURATION COMPLETE ASSEMBLY



- #2 CONFIGURATION: SUPPLIED WITH SUCTION AND DISCHARGE HEADS AND DISCHARGE HEADS
- OPTIONAL MOUNTED RELIEF VALVE
- DISCHARGE FLANGE | Bl 1.5 | 2 | 2.5 | 3
- DISCHARGE FLANGE IF NO RELIEF VALVE | Bl 1.5 | 2 | 2.5 | 3
- SUCTION FLANGE IF NO RELIEF VALVE | Bl 1.5 | 2 | 2.5 | 3

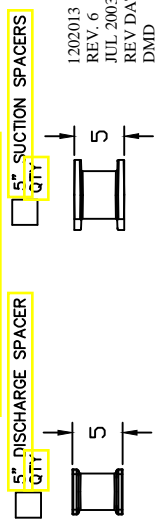
GEARCASE POSITIONS AS VIEWED FACING SUCTION INLET SELECT ONE



- INPUT SHAFT LEFT
- INPUT SHAFT RIGHT
- INPUT SHAFT ABOVE
- STANDARD POSITION

STANDARD SHAFT DROP
HM250&350 IS 8.3/4"
HM500 IS 11.15/16"

IF THE SHAFT DROP REQUIRED IS GREATER THAN LISTED ABOVE, THEN ORDER THE QUANTITY OF SPACERS REQUIRED



1202013
REV. 6
JUL 2003
REV DATE: 02/2009
DMD

Crating options/Instructions

- Standard Box
- Wood Crate, Bark Free
- Heat Treated Skid (Export)
- Oversized Domestic Skid and Box (38x44)
- Oversized Export Skid and Box (38x44)
- Oversized Heat Treated Skid (Export 38x44)
- UPS Pump Only-Cardboard Box
- Special Crating Instructions: _____

Additional Comments or Special Instructions

BSP threads instead of NPT
