

W.S. Darley & Co.

TRUSTED WORLDWIDE SINCE 1908



Pump Plant & Engineering

1051 Palmer Street
Chippewa Falls, WI 54729
Phone 800-634-7812
Fax 715-726-2656

Pump Sales & Corporate

325 Spring Lake Dr.
Itasca, IL 60143-2072
Phone (708) 345-8050
Fax (708) 345-8993

Date: _____

Bill To: _____

P.O. No.: _____

Customer No.: _____

Order Completed By: _____

Desired Delivery Date: _____

Ship To: _____

End Customer: _____

Customer Contact:

Tel No.: _____

Fax No.: _____

Email: _____

PUMP ORDER FORM

LDM PUMP

Please review the order form before starting. If any challenges arise, please call our Customer Service Department at (800) 634-7812 for assistance. We will be glad to help. Please fill in the information **completely**.

Rated capacity: (choose either GPM or LPM)

GPM: 1000 1250 1500 1750

LPM: 4000 5000 6000

*If special testing is required, please indicate your need.

Imperial Gallons (List Capacity) _____

Liters per Minute (List Capacity) _____

Other (Specify) _____

CHASSIS INFORMATION

Chassis make: _____ Transmission Make: _____

Model: _____ Model: _____

Engine: _____ Color: _____

HP: _____ Altitude: _____

FT. _____

@ _____ RPM _____ Wheelbase: _____

Electrical system: 12V 24V Cab to Axle: _____

Air Breaks: Yes No Body Width: 70" 72"

Pump Gear Ratio: _____

Control Location: Side Panel Top Console

Lowest Gear/Torque Converter Ratio: _____

PUMP DRIVE SHAFT INFORMATION

1. Measure distance across lugs of universal joint yoke to determine Spicer yoke series.
2. Check box of appropriate size below.
3. Spicer Lockon yoke supplied on front and rear of pump.

NOTE: If chassis driveline is not one of Spicer yokes listed, contact Darley Engineering.

Distance across lugs	Spicer Yoke Series
<input type="checkbox"/> 4.97	1550
<input type="checkbox"/> 5.31	1610 (Companion Flange Only)
<input type="checkbox"/> 6.09	1710 (standard)
<input type="checkbox"/> 7.00	1760
<input type="checkbox"/> 7.55	1810

PUMP RATING

- NFPA 1901 Fire Pump
- Other: _____

(Options, Fill in choices)

- Primary water type:** Salt water Fresh water

- Pump material:** Cast Iron Bronze (Recommended for salt water)

- Pump position:** Rear Front
(3 Gear only)

- Seal type:** Packing Mechanical Seal

- Electric Primer:** 12V 24V None

- Primer type:** Fluid Fluid-less

- Mounting Kit:** Standard

Behind-the-Panel Butterfly Valve:

- Hand wheel Operated **OR** Electric Actuated (12V only)

- Manual Vented **OR** Automatically Vented

Note: (rural fire depts. tend to stay away from hand wheel operated, automatically vented)

Inline Butterfly Valve:

- Hand wheel Operated **OR** Electric Actuated (12V only)

- Manual Vented **OR** Automatically Vented

Butterfly Valve Size:

- 4" 5" 6"

Butterfly Valve Piping Size:

- NPT Weld

Discharge Valves: (shipped loose) (mounted on pump)
 2-1/2" NH 30° Down Nipple

Suction Valves: (shipped loose)

2-1/2" NH Female 2-1/2" NH Female "Full Flow"

(Select option if you would like to add it to your pump)

- Inlet Relief, Butterfly Valve**
- 3" Tank to Pump Check Valve** (Check at left and indicate requirements at bottom)
- 3" 4° Tank to Pump Check Valve** (Check at left and indicate requirements at bottom)
- Special threads other than NH. Specify type: _____**
- 2-1/2" Inline Valve**
- 3/4" Valve Drains** (available on suction or discharge valves)
- Remote Control for Curb Side Valves**
- Top Console Bellcrank Valve Control**
- Supply 4° Flanges where required** (to compensate for pump mounted at 4°)
- Pressure Relief Valve with Remote Control and Pilot Light** (Shipped loose)
- Suction Relief Valve with Remote Control** (Shipped loose)
- Hand Speed Counter and Cable**
- Electric Tachometer, Speed Counter and Cable**

- Master Drain Valve (8 openings)**
- Isolated Ports Multiple Drain (6 openings)**
- Pump Overheat Protection System**
- Air Power Shift**
- Remote Packing Adjustment Cables**
- Auto Governor**
- Manual Override**
- Manual Shift Indicator Switch**
- High Pressure Second Stage Pump**
- CAFS**

W.S. Darley & Co.

LDM PUMP ORDER FORM

CHECK BOX FOR APPROPRIATE CHOICE OF EACH:

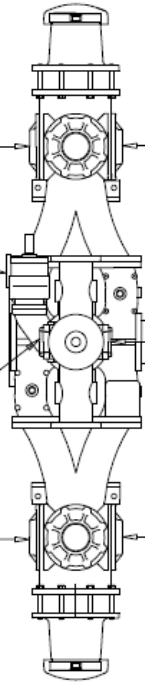
1. SUCTION INLET SIZE.
2. SUCTION FLANGE SIZE.
3. DISCHARGE EXTENSION LETTER.
4. INDICATE FLANGE SIZE (IN BOX) OF DISCHARGE EXTENSION FLANGES.
5. DISCHARGE FLANGE SIZE ON DISCHARGE HEAD.
6. BODY WIDTH.
7. PUMP FORWARD OR PUMP REAR.
8. BUTTERFLY VALVE OR SPACER.

TANK TO PUMP OPENING
BL 2.5 3 4 5

SUCTION FLANGE
BL 2.5 3 4 5
(NPT)
CHECK VALVE

DISCHARGE FLANGE
BL 2.5 3 4 5
CHECK VALVE

SUCTION FLANGE
BL 2.5 3 4 5
CHECK VALVE



DISCHARGE FLANGE
BL 2.5 3 4 5
CHECK VALVE

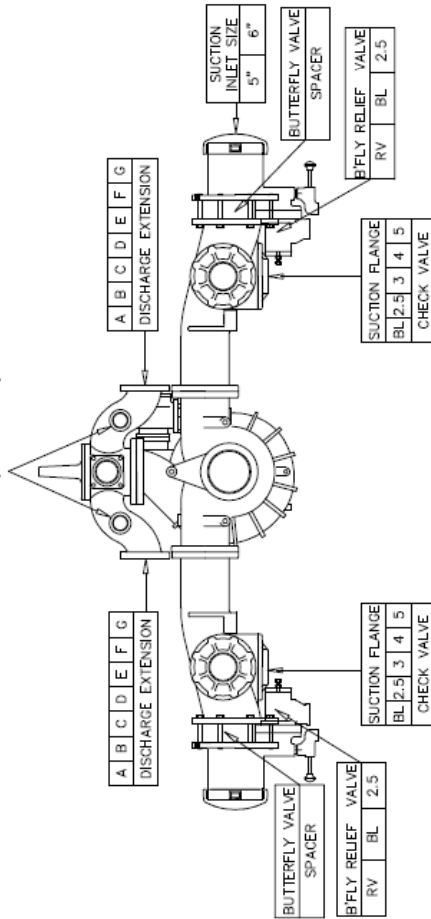
SUCTION FLANGE
BL 2.5 3 4 5
CHECK VALVE

SUCTION FLANGE
BL 2.5 3 4 5
CHECK VALVE

DR. SIDE
FRONT

(4) 2" NPT DISCHARGE
SUPPLIED (2 EACH SIDE).

PASS. SIDE
FRONT



A B C D E F G
DISCHARGE EXTENSION

A B C D E F G
DISCHARGE EXTENSION

BUTTERFLY VALVE
SPACER
BFLY RELIEF VALVE
RV BL 2.5

SUCTION INLET SIZE
5" 6"
BUTTERFLY VALVE
SPACER
BFLY RELIEF VALVE
RV BL 2.5

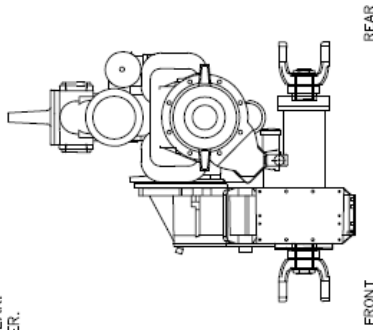
SUCTION FLANGE
BL 2.5 3 4 5
CHECK VALVE

SUCTION FLANGE
BL 2.5 3 4 5
CHECK VALVE

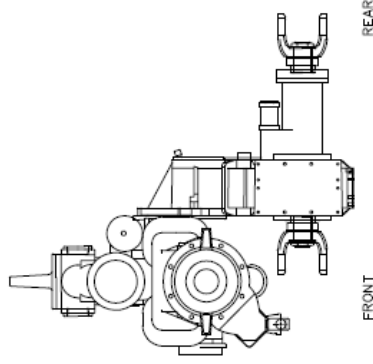
BODY WIDTH
70" 72"

PASSENGER SIDE

DRIVER SIDE



FRONT REAR
PUMP REAR OF GEARCASE
PUMP FORWARD OF GEARCASE



SHEET 3 OF 4

1202002
13-JUN-2005
REV 6
REV DATE: 08/2010 JJP

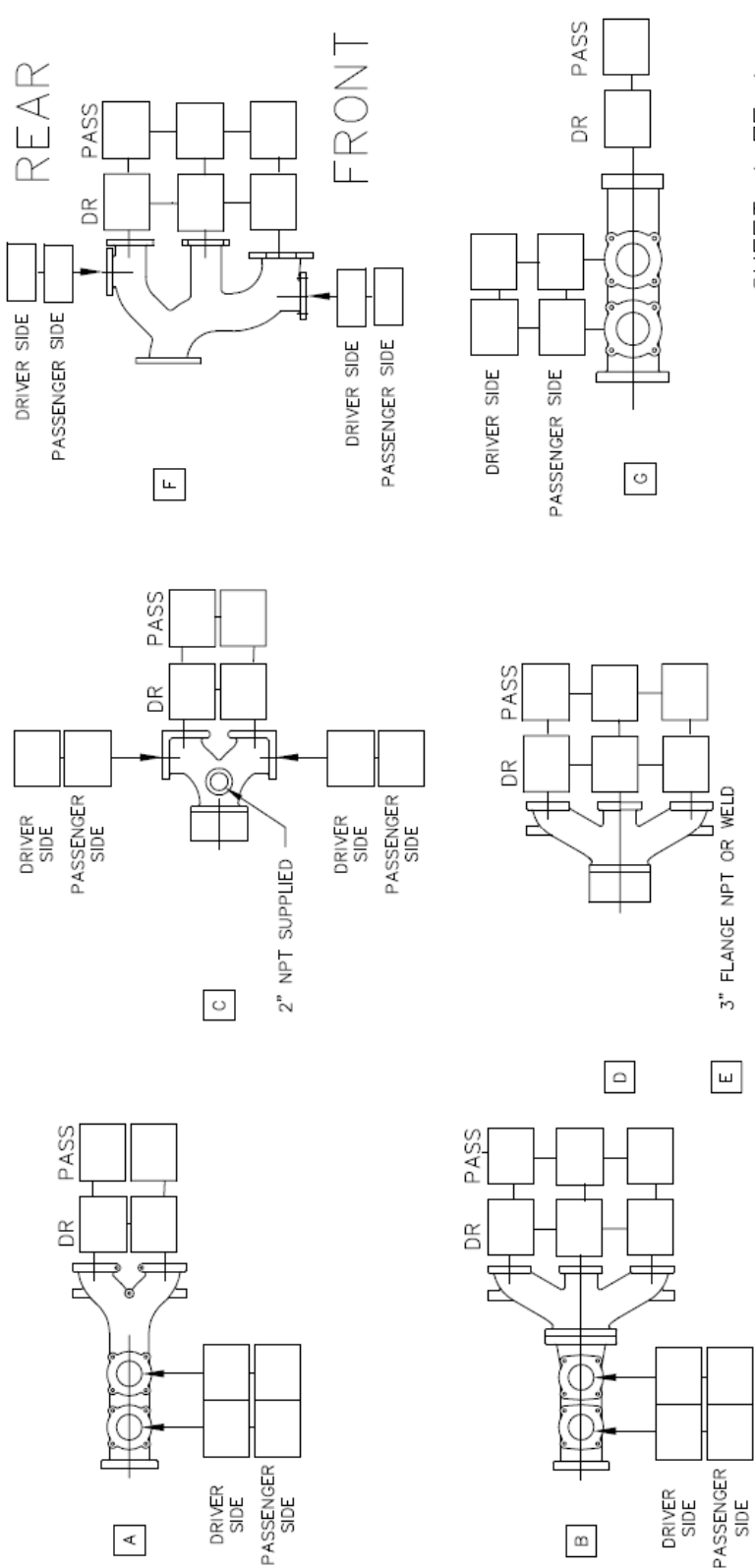


LDM PUMP ORDER FORM

DISCHARGE EXTENSIONS

INDICATE REQUIRED COMPANION FLANGE SIZE IN BOX CORRESPONDING TO DISCHARGE EXTENSION SELECTED.
 AVAILABLE FLANGE SIZES: 1 1/2", 2", 2 1/2", 3".

(FOR AKRON VALVES & LDH)



SHEET 4 OF 4

1202002
 13JUN2005
 REV 6
 REV DATE: 08/2010 JJP

Crating options/Instructions

- Standard Box
- Wood Crate, Bark Free
- Heat Treated Skid (Export)
- Oversized Domestic Skid and Box (38x44)
- Oversized Export Skid and Box (38x44)
- Oversized Heat Treated Skid (Export 38x44)
- Special Crating Instructions: _____

Additional Comments or Special Instructions

BSP threads instead of NPT
