

W.S. Darley & Co.

TRUSTED WORLDWIDE SINCE 1908



Pump Plant & Engineering

1051 Palmer Street
Chippewa Falls, WI 54729
Phone 800-634-7812
Fax 715-726-2656

Pump Sales & Corporate

325 Spring Lake Dr.
Itasca, IL 60143-2072
Phone (708) 345-8050
Fax (708) 345-8993

Date: _____

Bill To: _____

P.O. No.: _____

Customer No.: _____

Order Completed By: _____

Desired Delivery Date: _____

Ship To: _____

End Customer: _____

Customer Contact:

Tel No.: _____

Fax No.: _____

Email: _____

PUMP ORDER FORM

LSP PUMP

Please review the order form before starting. If any challenges arise, please call our Customer Service Department at (800) 634-7812 for assistance. We will be glad to help. Please fill in the information **completely.**

Rated capacity:

GPM: ☐ 500 ☐ 750 ☐ 1000 ☐ 1250

Or

LPM: ☐ 2000 ☐ 3000 ☐ 4000

*If special testing is required, please indicate your need.

Imperial Gallons (List Capacity) _____

Liters per Minute (List Capacity) _____

Other (Specify) _____

CHASSIS INFORMATION

Chassis make: _____

Transmission Make: _____

Model: _____

Model: _____

Engine: _____

Color: _____

HP: _____

Altitude: _____ FT.

@ _____ RPM

Electrical system: ☐ 12V ☐ 24V

PTO INFORMATION

PTO Model: _____

PTO Location: (check one)

PTO % of Engine Speed: _____

☐ Driver's Side ☐ Passenger's Side

Intermittent Torque Rating:
_____ FT. / LBS.

PTO Rotation: (check one):

☐ Engine Rotation

Note: 8 Bolt PTO or Larger required

☐ Opposite engine rotation

PUMP RATING

☐ NFPA 1901 Fire Pump

☐ Other: _____

(Options, Fill in choices)

- Primary water type:** ☐ Salt water ☐ Fresh water
- Pump material:** ☐ Cast Iron ☐ Bronze (Recommended for salt water)
- Pump position:** ☐ Rear ☐ Front
(3 Gear only)
- Seal type:** ☐ Packing ☐ Mechanical Seal
- Electric Primer:** ☐ 12V ☐ 24V ☐ None
- Primer type:** ☐ Fluid ☐ Fluid-less
- Mounting Kit:** ☐ Standard ☐ 18 Degree
- Suction Tee:** ☐ 6" Sweep ☐ 6" Victaulic

Drive Line Component:

- ☐ 1410 Yoke
- ☐ 1410 Companion Flange
- ☐ 1410 Lock-On Yoke & Slip Tube

Inline Butterfly Valve:

- ☐ Hand wheel Operated **OR** ☐ Electric Actuated
- ☐ Manual Vented **OR** ☐ Automatically Vented

Inline Valve Size:

- ☐ 4" ☐ 5" ☐ 6"

Inline Valve Piping Size:

- ☐ NPT ☐ Weld ☐ NST

- Suction Caps:** ☐ 5" ☐ 6"

Suction Adapter:

- ☐ 6" Suction Tee
☐ 6" Suction Flange: ☐ NPT ☐ Weld ☐ NST

Discharge Valves: (shipped loose)

- ☐ 2-1/2" NST Straight Nipple ☐ 2-1/2" NST 30° Down Nipple

Suction Valves: (shipped loose)

- ☐ 2-1/2" NST Female ☐ 2-1/2" NST Female "Full Flow"

- ☐ **Inline Tank to Pump Check Valve:** ☐ 3" or ☐ 4"

- ☐ **3/4" Valve Drains** (available on suction or discharge valves)

- ☐ **Pressure Relief Valve with Remote Control and Pilot Light** (Shipped loose)

- ☐ **Suction Relief Valve with Remote Control** (Shipped loose)

PTO Pump "IN GEAR" Indicator Switch:

- ☐ Automatic Transmission ☐ Manual Transmission

- ☐ **Tachometer Cable (cable only)**

- ☐ **Hand Speed Counter and Cable**

- ☐ **Electric Tachometer, Speed Counter and Cable**

- ☐ **Master Drain Valve (8 openings)**

- ☐ **Isolated Ports Multiple Drain (6 openings)**

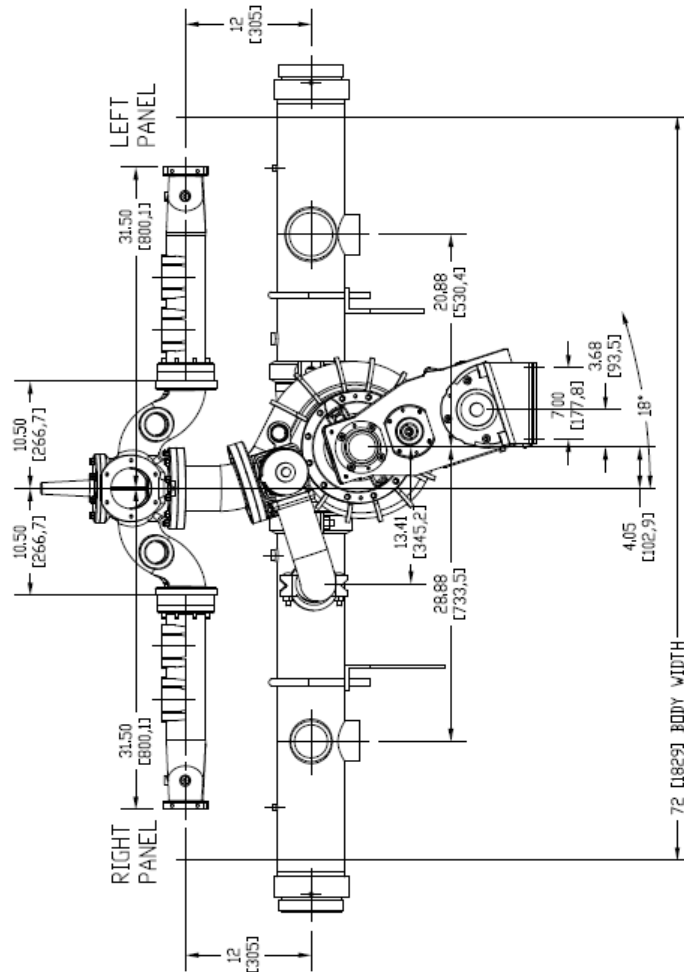
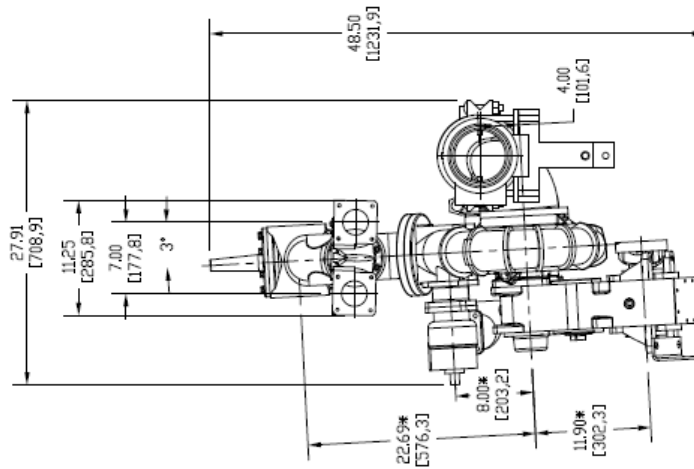
- ☐ **Pump Overheat Protection System**

- ☐ **Complete suction and discharge manifolding w/ valves**

- ☐ **Anode** ☐ **Suction** ☐ **Discharge**

[illegible]

LSP PASSENGER SIDE MOUNT
18° GEARCASE FRONT MOUNT PUMP



W.S.Darley&Co.

LSP PUMP ORDER FORM 3-GEAR TRANSMISSION

CHECK BOX FOR APPROPRIATE CHOICE OF EACH:

1. SUCTION FLANGE SIZE.
2. DISCHARGE FLANGE SIZE.
3. GEARCASE POSITION.
4. PUMP FORWARD OR PUMP REAR.

FLANGE SIZE

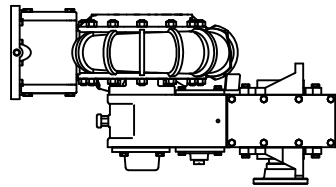
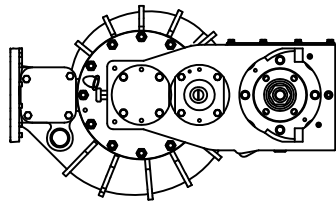
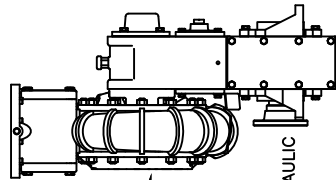
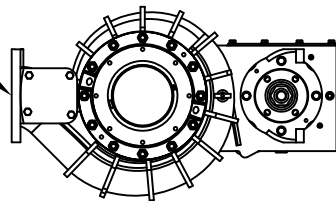
- ☐ 4" NPT
☐ 4" WELD
☐ 5" NPT
☐ 5" WELD
☐ OPTIONAL: DISCHARGE HEAD (SEPARATE PAGE)



PUMP FORWARD OF GEARCASE



PUMP REAR OF GEARCASE



FLANGE SIZE

- ☐ 6" NPT
☐ 6" WELD
☐ 6" VICTAULIC
☐ 6" SWEPT SUCTON TEE VICTAULIC

3105300



- ☐ 6" 45° SUCTON EXTENSION
 (USE WITH 6" SWEPT SUCTON TEE
 FOR ADDITIONAL DRIVELINE DROP)

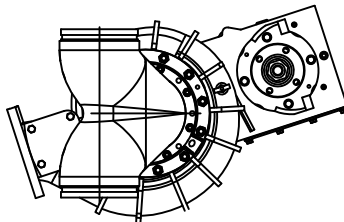


- ☐ 6" STRAIGHT SUCTON TEE VICTAULIC

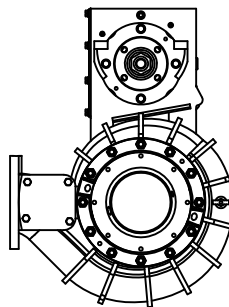
3105301



GEARCASE POSITIONS
 AS VIEWED FACING SUCTON INLET
 SELECT ONE

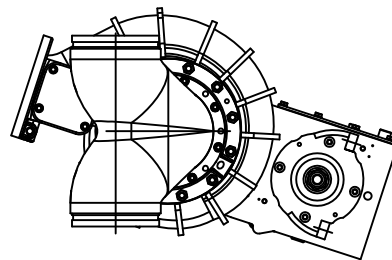


- ☐ ROTATED 18° TO DRIVER SIDE



- ☐ STANDARD

- ☐ ROTATED 90°



- ☐ ROTATED 18° TO PASSENGER SIDE

1202018
 REV. 6
 JUL 2001
 LN
 REV DATE: 5/4/18
 REV BY: SLS

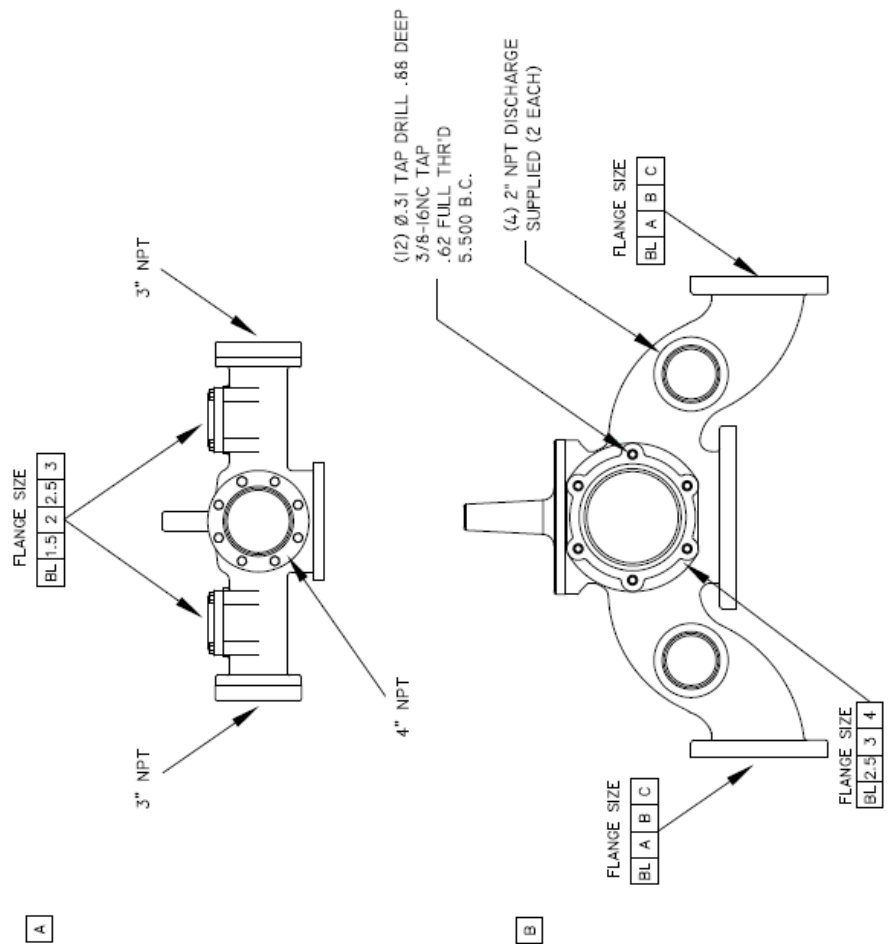
OPTIONAL GEAR CASE ORIENTATION

DISCHARGE HEAD OPTIONS

CHECK BOX FOR APPROPRIATE CHOICE OF EACH:

1. DISCHARGE HEAD LETTER.
2. DISCHARGE FLANGE SIZE.
3. DISCHARGE EXTENSION LETTER.

DISCHARGE HEADS

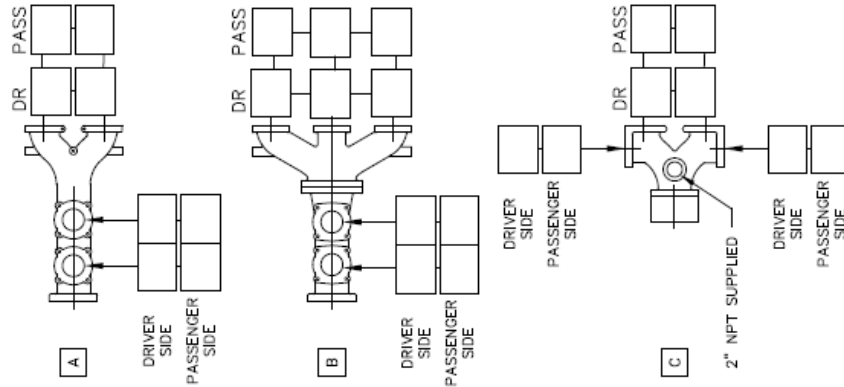


DISCHARGE EXTENSIONS

(DISCHARGE HEAD "A" ONLY)

INDICATE REQUIRED COMPANION FLANGE
SIZE IN BOX CORRESPONDING TO
DISCHARGE EXTENSION SELECTED.

AVAILABLE FLANGE SIZES: 1 1/2", 2", 2 1/2", 3".



1202017
REV. 5
09/26/08
REV DATE: 09/26/08
REV BY: R/J

W.S. Darley & Co.

LSP PUMP ORDER FORM 2-GEAR TRANSMISSION

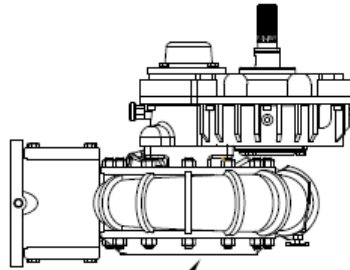
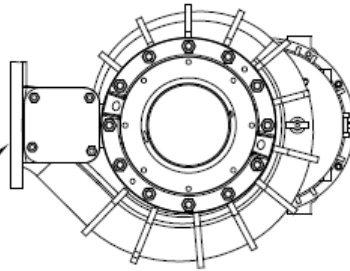
CHECK BOX FOR APPROPRIATE CHOICE OF EACH:

1. SUCTION FLANGE SIZE.
2. DISCHARGE FLANGE SIZE.
3. GEARCASE POSITION.

FLANGE SIZE

- ☐ 4" NPT
☐ 4" WELD
☐ 5" NPT
☐ 5" WELD

☐ OPTIONAL:
DISCHARGE HEAD
(SEPARATE PAGE)

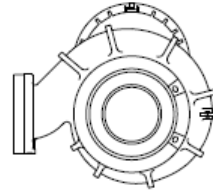


FLANGE SIZE

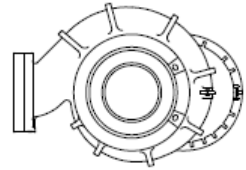
- ☐ 6" NPT
☐ 6" WELD
☐ 6" SUCTION TEE VICTAULIC

☐ 6" 45° SUCTION EXTENSION
(USE WITH 6" SUCTION TEE FOR
ADDITIONAL DRIVELINE DROP)

GEARCASE POSITIONS
AS VIEWED FACING SUCTION INLET
SELECT ONE



☐ ROTATED 90°



☐ STANDARD
 OPTIONAL GEAR CASE ORIENTATION

1202017
 REV. 5
 JUL 2001
 LN
 REV DATE: 09/24/08
 REV BY: RJG

LSP 2 GEAR CONFIGURATIONS

REV	DESCRIPTION	DATE	ENG. NO.	APP'D
1.0				

#1 STANDARD (DEFAULT)	#2 STANDARD	#3 STANDARD	#4 STANDARD	#5 STANDARD	#6 STANDARD CURRENTLY UNAVAILABLE	#7 STANDARD CURRENTLY UNAVAILABLE	#8 STANDARD CURRENTLY UNAVAILABLE	#9 STANDARD	#10 STANDARD	#11 STANDARD	#12 STANDARD
#13 INPUT LEFT	#14 INPUT LEFT	#15 INPUT LEFT CURRENTLY UNAVAILABLE	#16 INPUT LEFT CURRENTLY UNAVAILABLE	#17 INPUT LEFT CURRENTLY UNAVAILABLE	#18 INPUT LEFT	#19 INPUT LEFT	#20 INPUT LEFT	#21 INPUT LEFT	#22 INPUT LEFT	#23 INPUT LEFT	#24 INPUT LEFT
#25 INVERTED CURRENTLY UNAVAILABLE	#26 INVERTED CURRENTLY UNAVAILABLE	#27 INVERTED	#28 INVERTED	#29 INVERTED	#30 INVERTED	#31 INVERTED	#32 INVERTED	#33 INVERTED	#34 INVERTED	#35 INVERTED	#36 INVERTED CURRENTLY UNAVAILABLE
#37 INPUT RIGHT	#38 INPUT RIGHT	#39 INPUT RIGHT	#40 INPUT RIGHT	#41 INPUT RIGHT	#42 INPUT RIGHT	#43 INPUT RIGHT	#44 INPUT RIGHT	#45 INPUT RIGHT CURRENTLY UNAVAILABLE	#46 INPUT RIGHT CURRENTLY UNAVAILABLE	#47 INPUT RIGHT CURRENTLY UNAVAILABLE	#48 INPUT RIGHT

SHOWN ABOVE ARE FOUR AVAILABLE GEARCASE ORIENTATIONS: STANDARD, INPUT SHAFT LEFT, INVERTED, AND INPUT SHAFT RIGHT. EACH GEARCASE ORIENTATION IS SHOWN WITH TWELVE AVAILABLE PUMP CONFIGURATIONS IN 30° INTERVALS. DEFAULT CONFIGURATION WILL BE STANDARD GEARCASE ORIENTATION PUMP CONFIGURATION #1.

NOTE: PUMP DRAIN MUST BE ADDED TO ALL CONFIGURATIONS THAT WILL NOT ALLOW DRAINAGE THROUGH STANDARD PUMP DRAIN OR THE PUMP DISCHARGE

REMOVE SHARP EDGES ALL DIMENSIONS IN INCHES UNLESS NOTED FINISH: 32-1000 TOLERANCE: 0.0050 DATE: 23-May-23 SCALE: 1:18		INCHES 1/4 1/2 3/4 1 1 1/4 1 1/2 1 3/4 2 2 1/4 2 1/2 2 3/4 3 3 1/4 3 1/2 3 3/4 4 4 1/4 4 1/2 4 3/4 5 5 1/4 5 1/2 5 3/4 6 6 1/4 6 1/2 6 3/4 7 7 1/4 7 1/2 7 3/4 8 8 1/4 8 1/2 8 3/4 9 9 1/4 9 1/2 9 3/4 10 10 1/4 10 1/2 10 3/4 11 11 1/4 11 1/2 11 3/4 12		W.S. Darby & Co. 1000 S. 10th St. Waco, TX 76787 TEL: 817-769-1111 FAX: 817-769-1112 WWW.WSDARBY.COM	
Q.D. PART NO. 1000 S. 10th St. Waco, TX 76787 TEL: 817-769-1111 FAX: 817-769-1112 WWW.WSDARBY.COM		Q.D. PART NO. 1000 S. 10th St. Waco, TX 76787 TEL: 817-769-1111 FAX: 817-769-1112 WWW.WSDARBY.COM			
Q.D. PART NO. 1000 S. 10th St. Waco, TX 76787 TEL: 817-769-1111 FAX: 817-769-1112 WWW.WSDARBY.COM		Q.D. PART NO. 1000 S. 10th St. Waco, TX 76787 TEL: 817-769-1111 FAX: 817-769-1112 WWW.WSDARBY.COM			

DL0801

Crating options/Instructions

- ☐ Standard Box
- ☐ Wood Crate, Bark Free
- ☐ Heat Treated Skid (Export)
- ☐ Oversized Domestic Skid and Box (38x44)
- ☐ Oversized Export Skid and Box (38x44)
- ☐ Oversized Heat Treated Skid (Export 38x44)
- ☐ Special Crating Instructions: _____

Additional Comments or Special Instructions

☐ **BSP threads instead of NPT**This image shows a blank sheet of white paper with horizontal ruling lines. The lines are evenly spaced and run across the width of the page. There are no margins, text, or other markings on the paper.