

## SERVICE BULLETIN

1202504

**TITLE: PINNING FRONT MOUNT SUCTION SCREENS**

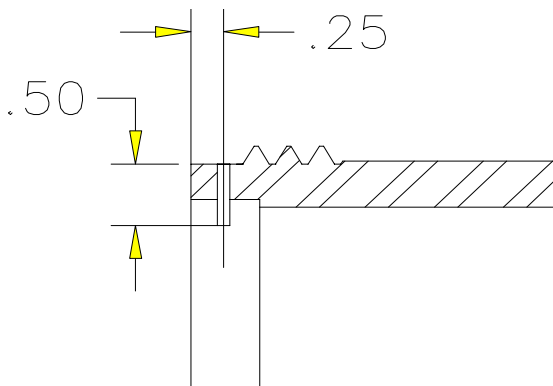
**DATE: AUGUST 22, 1996**

It has recently come to our attention that the hydrant screens on our larger (750 gpm through 1500 gpm) front mount pumps may rotate in their counterbore. In some cases, the wear caused by this rotation was sufficient to dislodge the strainer and cause it to become ingested into the impeller, resulting in costly repairs and downtime.

All departments that have purchased front mount pumps, models KSF and PSF, should inspect the outside diameter of their suction screens for damage or indications of wear. It is also recommended that the screen be pinned in place as indicated in the instructions below. All future orders for KSF and PSF pumps will be sent with the pin installed to prevent the suction screen from rotating.

### INSTRUCTIONS FOR PINNING SUCTION SCREEN:

1. Center punch a point for starting a drill hole at the beginning of the thread on the 5" or 6" suction nipple.
2. Using a 3/32 drill bit, drill through the casting wall.
3. Apply Loctite 609 or 603 onto a 3/32 diameter x .50 Lg. dowel pin.
4. Press pin into hole until it becomes flush with the outside surface of the suction nipple.



Please direct any questions regarding this bulletin to our Engineering office at 800-634-7812 or 715-726-2650.

Michael C. Ruthy  
Chief Engineer