



**Darley**  
**Pump Division**  
**1051 Palmer St.**  
**Chippewa Falls, WI 54729**  
**715-726-2650**

## Technical Bulletin on Midship Mounted Fire Pump Shift Interlock

1202518

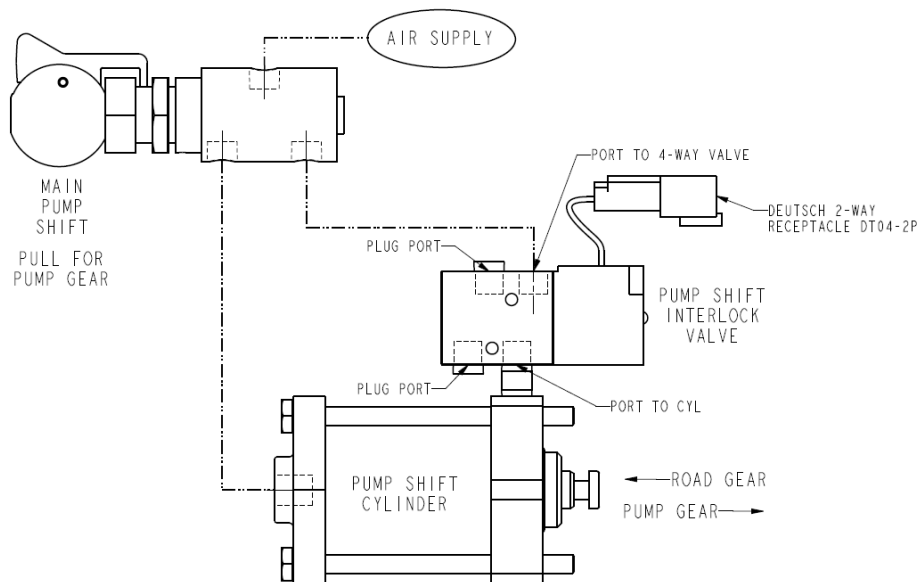
Jan 5, 2017

Rev. 1

After Jan 1, 2016, all midship pump transmissions will include an air shift interlock valve assembly.

NFPA1901 (2016 Edition) 16.10.1.4 requires a shift interlock to prevent the pump drive from being shifted out of pump engaged+pumping mode of operation when the chassis transmission is in pump gear+

W.S. Darley & Co. has developed an interlock system for the pneumatic shift that prevents the pneumatic shift from actuating when signaled that the chassis transmission is in pump gear+. This will be standard equipment on W.S. Darley & Co.'s NFPA 1901 midship transmissions ordered after January 1, 2016.



Questions can also be directed to our Customer Service Department at  
 800-634-7812 or 715-726-2650.