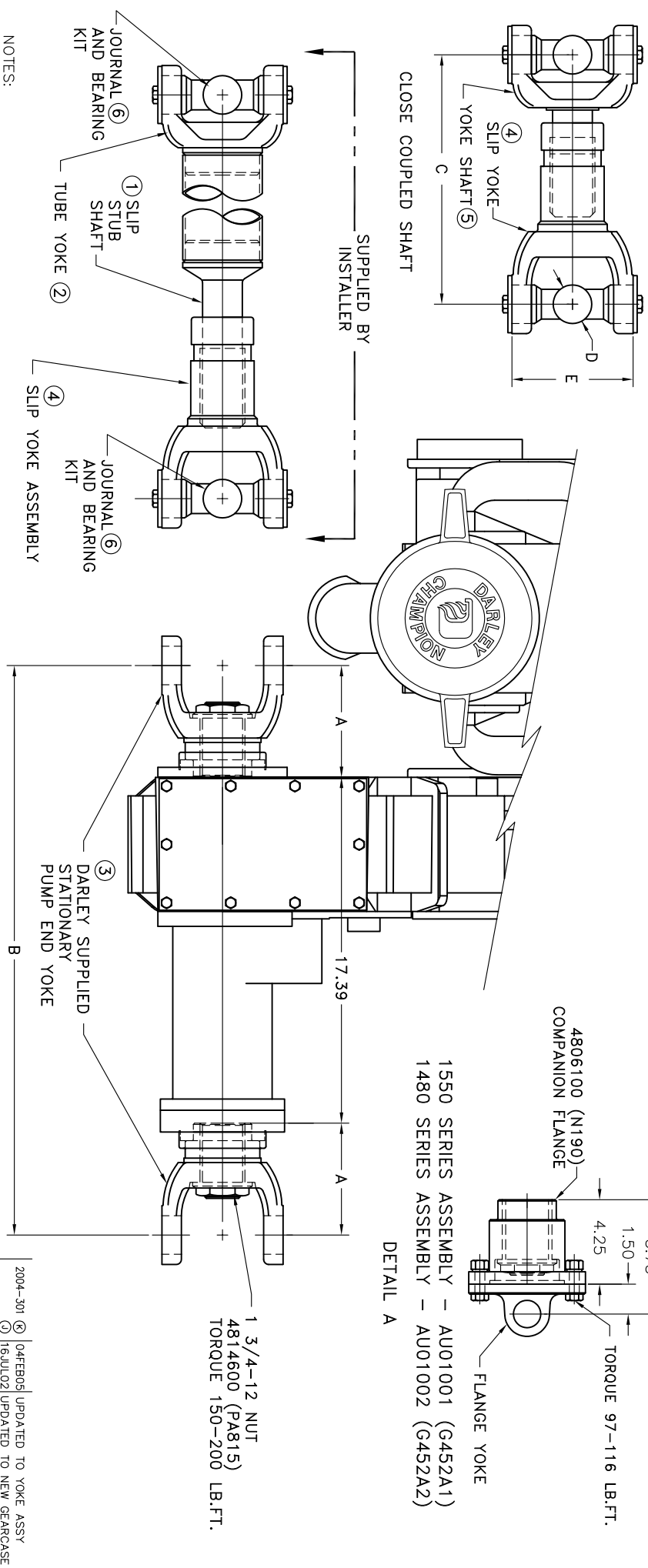


YOKE SERIES	TUBE SIZE	SLIP STUB SHAFT ①	TUBE YOKE ②	PUMP YOKE ③	SLIP YOKE ④	YOKE SHAFT (FOR CLOSE COUPLE) ⑤	BEARING KIT ⑥	A	B	C (CLOSE COUPLE)	D	E
1550	3.00x.095W	PA671 (4-40-821)	PA678 (4-28-377X)	ASSEMBLY: AU01001 [G452A1] (REF. DETAIL A)	PA690 (4-3-1241KX)	PA695 (4-82-371)	PA620 (5-155X)	5.75	28.90	10.31	1.38	4.97
1550	3.50x.095W	PA672 (4-40-761)	PA679 (4-28-307)									
1610	3.50x.095W	PA673 (5-40-451)	4816900 (5-28-167)									
1610	3.50x.134W	4814401 (5-40-1151)	4810800 (5-28-627)	4813310 (K)	PA696 (5-82-871)	4809900 (5-279X)		6.12	29.64	11.25	1.88	5.31
1710	4.00x.134W	PA675 (6-40-711)	4811700 (6-28-347)									
1710	4.50x.134W	PA676 (6-40-631)	PA682 (6-28-407)	4813410 (K)	4813700 (6-3-2741KX)	4813800 (6-82-1251)	4810300 (5-280X)	5.63	28.66	11.42	1.94	6.09
1760	4.00x.134W	PA675 (6-40-711)	PA683 (6.3-28-17)	4813510 (K)	PA693 (6.3-3-41KX)	PA698 (6.3-82-21-13)	4810600 (5-407X)	6.00	29.40	13.66	1.94	7.00
1760	4.50x.134W	PA676 (6-40-631)		SEE NOTE 3, (H)								
1810	4.50x.134W	PA677 (6.5-40-201)	PA684 (6.5-28-117)	4813610 (K)	PA694 (6.5-3-1431KX)	PA699 (6.5-82-451-8)	PA633 (5-281X)	5.88	29.16	13.46	1.94	7.55

DARLEY NO. (SPICER NO.)



1550 SERIES ASSEMBLY - AU01001 (G452A1)
 1480 SERIES ASSEMBLY - AU01002 (G452A2)
 DETAIL A

1 3/4-12 NUT
 4814600 (PA815)
 TORQUE 150-200 LB.FT.

NOTES:
 1] REFERENCE DIMENSION 'B' IS FOR ALL CHAMPION PUMPS WHICH USE THE 'N' STYLE GEAR BOX [EM-LDM-N-PSM]
 2] 1810 SERIES JOINTS WILL NOT SWING UNDER CASING OF 'N' PUMP FORWARD OF GEAR CASE
 3] 1760 SERIES JOINTS REQUIRE SPECIAL YOKE KIT KA00051 TO SWING UNDER CASING OF 'N' PUMP FORWARD OF GEAR CASE

MATERIAL: _____

THIS DESIGN IS THE PROPERTY OF DARLEY & CO. UNAUTHORIZED REPRODUCTION IS PROHIBITED.

ALL DIMENSIONS IN INCHES UNLESS NOTED

DO NOT SCALE PRINT

OLD PART NO. N188

PART NO.	TOLERANCE	DATE	CHANGE
AS NOTED	EXCEPT		
11 FEB 00	REVISION (2000-65)		
JUL 11, 94	REVISION (94-60)		
DEC 15, 92	REVISION (92-121)		

2004-301 ④ 04 FEB 05 UPDATED TO YOKE ASSY
 ① 16 JUL 02 UPDATED TO NEW GEARCASE
 ② 11 FEB 00 REVISION (2000-65)
 ③ JUL 11, 94 REVISION (94-60)
 DEC 15, 92 REVISION (92-121)

W.S. DARLEY & CO.
 MELROSE PARK, IL - CHIPPewa FALLS, WI

DRIVE LINE DETAIL
 SPICER LOCKON YOKE

DATE: FEB 22, 91
 SCALE: 1/4

DNM