

W.S. DARLEY & CO.

TO DISASSEMBLE & REPAIR THE DOUBLE FLOAT PRIMER

Refer to Drawing DGC0204

1. Loosen and remove four-10-24x1/2 RH. Machine screw which holds the primer valve body (7) and primer shutoff gasket (8) onto the safety float housing (11). Check valve seat o-rings (9). Replace if necessary.
2. Remove safety float housing (11) by removing four 1/4" x 1-1/2" cap screws.
3. Remove ball float assembly (10) and ballast washer (12).
4. Remove primer valve body plate (14) and primer cover gasket (13). Check o-ring (9) in primer body plate (14). Replace if necessary.
5. Remove primer cover (2) and primer body gasket (4) by loosening the six 1/4" x 3/4" cap screws.
6. Loosen jam nut on pivot post (16) and unscrew primer float assembly (1) from primer cover (2). Clean and inspect float assembly.
7. Check body o-ring (20). Replace if necessary.
8. Adjust float (1) to maintain 1/4" between baffle (5) and float lever.
9. TO ASSEMBLE REVERSE THE ABOVE

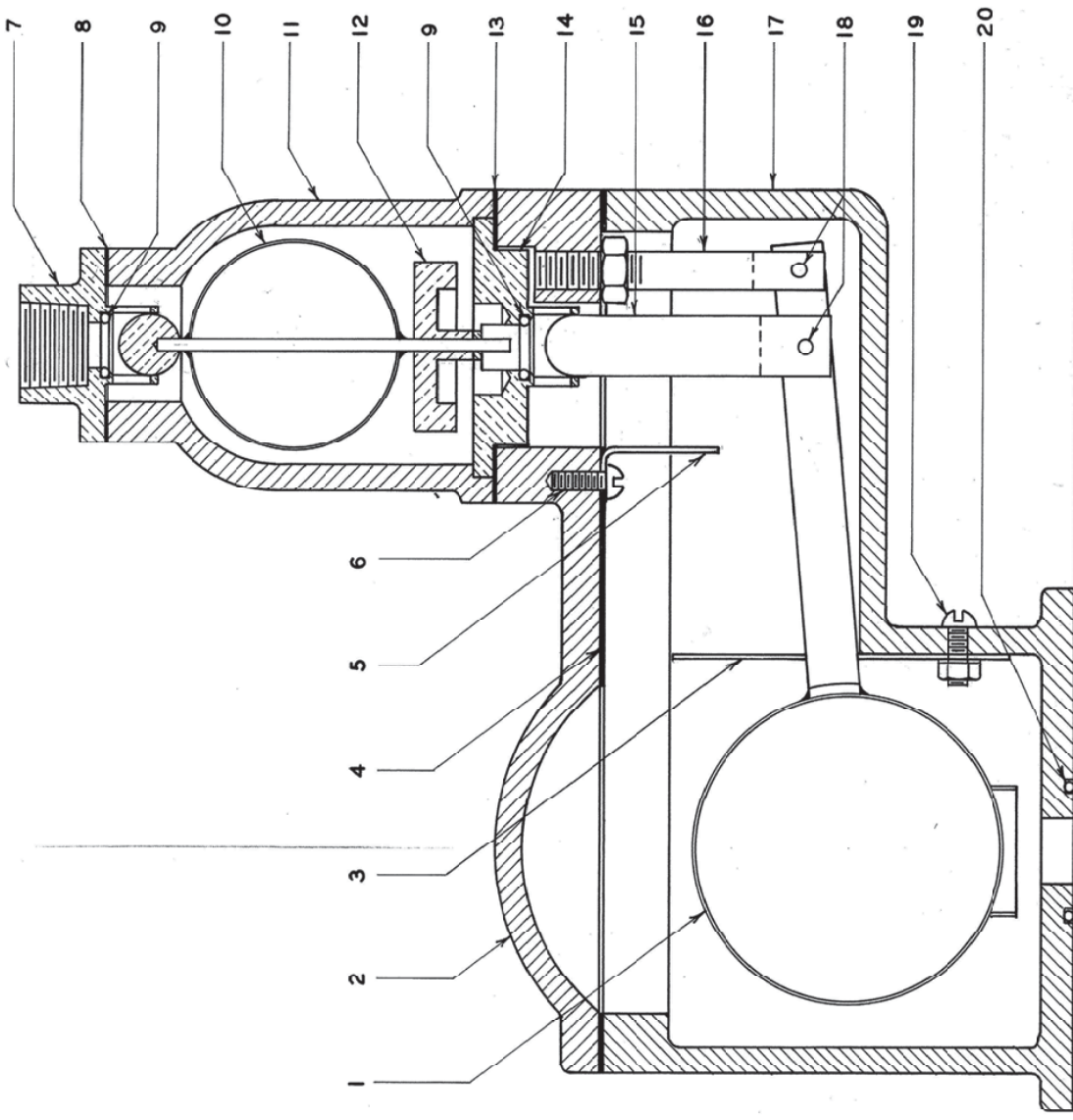
TOOLS REQUIRED FOR DISSASSEMBLY:

- Screw Driver
- 7/16" Wrench
- 9/16" Wrench

PARTS LIST DOUBLE FLOAT PRIMER DRAWING DGC0204

Rep. No.	Name of Part	Rep. No.	Name of Part
1	Primer Float Assembly	11	Safety Float Housing
2	Primer Cover	12	Ballast Washer
3	Baffle, Lower	13	Primer Cover Gasket
4	Primer Body Gasket	14	Primer Valve Body Plate
5	Baffle, Upper	15	Primer Valve Stem
6	#10-24x1/2" Machine Screw	16	Primer Pivot Post
7	Primer Valve Body	17	Primer Body
8	Primer Shutoff Gasket	18	Clevis Pin
9	Valve Seat O-ring	19	#10-24x1/2" Mounting Screw & Nut
10	Ball Float Assembly	20	Body O-ring

**IF FURTHER INFORMATION IS NEEDED, CALL W.S. DARLEY & CO. AT
CHIPPEWA FALLS, WI. AT 800-634-7812 or 715-726-2650**



OK

DATE	PART NO.	WAS
W. S. DARLEY & CO. MELROSE PARK, ILL.		
DOUBLE FLOAT PRIMER		
DR.	SCALE	PART NO.
TR.	DATE	1600204
		G1538

K & E 17-0488 100-4-71