

NOTE:

PTO OUTPUT ENGINE ROTATION ONLY

AVAILABLE GEAR RATIOS: 1.34:1 2.12:1  
1.49:1 2.44:1  
1.66:1 2.67:1  
1.86:1

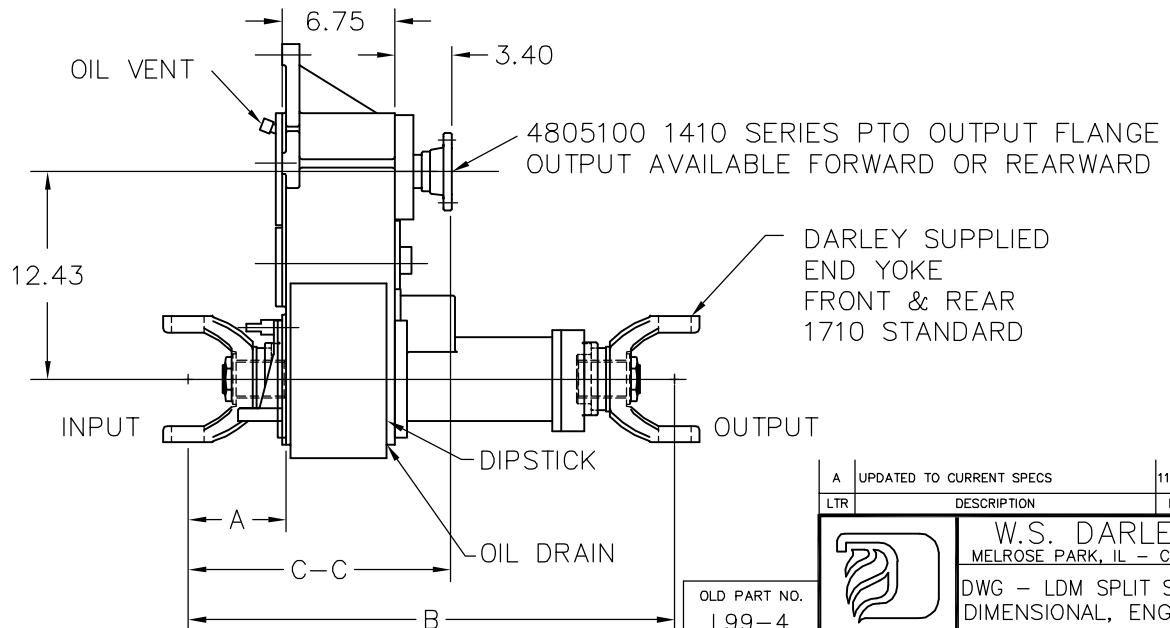
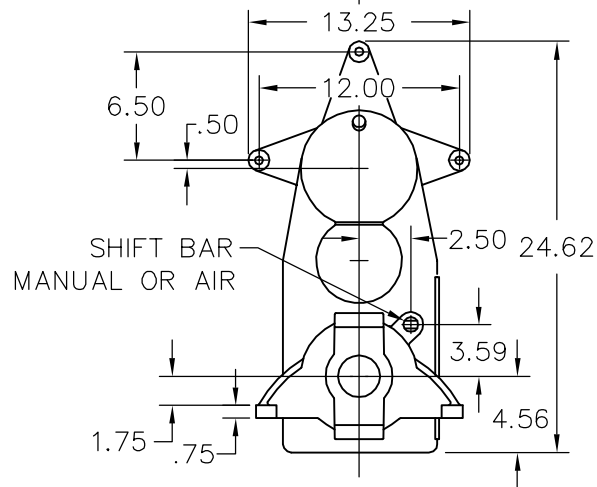
PTO OUTPUT TORQUE UP TO 600 FT-LB  
PTO OUTPUT HORSEPOWER UP TO 300 HP  
PTO OUTPUT SPEED UP TO 5000 RPM

MAXIMUM DRIVELINE THROUGH TORQUE 19,230 FT-LB

CONTACT W.S. DARLEY ENGINEERING DEPARTMENT  
FOR APPLICATION ASSISTANCE


YOKE SERIES	A	B	C-C
1550	5.75	28.90	15.90
1610	6.12	29.64	16.27
1710	5.63	28.66	15.78
1760	6.00	29.40	16.15
1810	5.88	29.16	16.03

SEE DRAWING DNM0000 FOR  
DRIVELINE PART DETAILS



APPROX NET WEIGHT: 290 LB

OLD PART NO.  
L99-4

A	UPDATED TO CURRENT SPECS	11MAR05	2005-068	HAL
LTR	DESCRIPTION	DATE	CHG NO.	APPR'D
		<b>W.S. DARLEY &amp; CO.</b> MELROSE PARK, IL - CHIPPEWA FALLS, WI		
DWG - LDM SPLIT SHAFT PTO DIMENSIONAL, ENG ROT		DATE MAR15,92		
DR'N	S. LEE	<b>DLD0104</b>		
CHKD				
TRCD	DWS			
SCALE		1/8		

THIS DESIGN IS THE PROPERTY OF  
W.S. DARLEY AND CO. - UNAUTHORIZED  
REPRODUCTION IS PROHIBITED

ALL DIMENSIONS IN  
INCHES UNLESS NOTED

DO NOT SCALE PRINT