

APPROX NET WEIGHT: 290 LB

NOTE:

PTO OUTPUT OPPOSITE ENGINE ROTATION ONLY

AVAILABLE GEAR RATIOS: 0.93:1 1.00:1

1.27:1

PTO OUTPUT TORQUE UP TO 600 FT-LB

PTO OUTPUT HORSEPOWER UP TO 300 HP

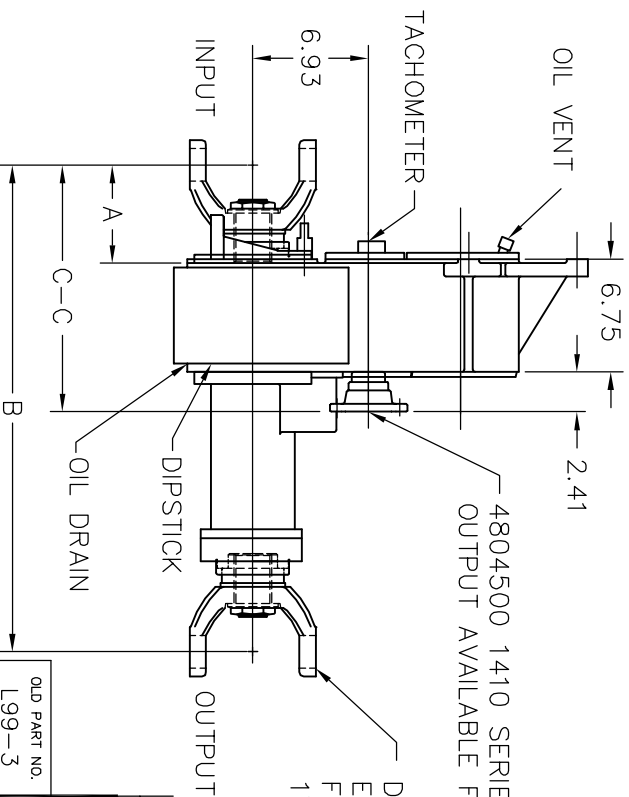
MAXIMUM DRIVELINE THROUGH TORQUE 19,230 FT-LB

CONTACT W.S. DARLEY ENGINEERING DEPARTMENT

FOR APPLICATION ASSISTANCE

YOKE SERIES	A	B	C-C
1550	5.75	28.90	15.90
1610	6.12	29.64	16.27
1710	5.63	28.66	15.78
1760	6.00	29.40	16.15
1810	5.88	29.16	16.03

SEE DRAWING DNM0000 FOR DRIVELINE PART DETAILS



4804500 1410 SERIES PTO OUTPUT FLANGE  
OUTPUT AVAILABLE FORWARD OR REARWARD


DARLEY SUPPLIED  
END YOKE  
FRONT & REAR  
1710 STANDARD

THIS DESIGN IS THE PROPERTY OF  
W.S. DARLEY AND CO. UNAUTHORIZED  
REPRODUCTION IS PROHIBITED

ALL DIMENSIONS IN  
INCHES UNLESS NOTED

DO NOT SCALE PRINT

OLD PART NO.  
L99-3

A	UPDATED TO CURRENT SPECS	11MAR05	2005-068	HAL
TR		DATE	CHG NO	APPRO
				
<b>W.S. DARLEY &amp; CO.</b> MELROSE PARK, IL - CHIPPEWA FALLS, WI				
DWG - LDM SPLIT SHAFT PTO DIMENSIONAL, OP ENG ROT				
DRN	S. LEE	DATE	MAR15,92	
CHKD	DWS	SCALE	1/8	
TRCD				

**DLD0103**