

# W.S. Darley & Co.

TRUSTED WORLDWIDE SINCE 1908



## Pump Plant & Engineering

1051 Palmer Street  
Chippewa Falls, WI 54729  
Phone 800-634-7812  
Fax 715-726-2656

## Pump Sales & Corporate

325 Spring Lake Dr.  
Itasca, IL 60143-2072  
Phone (708) 345-8050  
Fax (708) 345-8993

Date: \_\_\_\_\_

Bill To: \_\_\_\_\_

P.O. No.: \_\_\_\_\_

\_\_\_\_\_

Customer No.: \_\_\_\_\_

\_\_\_\_\_

Order Completed By: \_\_\_\_\_

\_\_\_\_\_

Desired Delivery Date: \_\_\_\_\_

Ship To: \_\_\_\_\_

End Customer: \_\_\_\_\_

\_\_\_\_\_

Customer Contact:

\_\_\_\_\_

Tel No.: \_\_\_\_\_

\_\_\_\_\_

Fax No.: \_\_\_\_\_

Email: \_\_\_\_\_

# PUMP ORDER FORM

## KSF PUMP

Please review the order form before starting. If any challenges arise, please call our Customer Service Department at (800) 634-7812 for assistance. We will be glad to help. Please fill in the information **completely**.

Rated capacity:  GPM     1000  
 LPM     4000

\*If special testing is required, please indicate your need.

Imperial Gallons (List Capacity) \_\_\_\_\_

Liters per Minute (List Capacity) \_\_\_\_\_

Other (Specify) \_\_\_\_\_

### CHASSIS INFORMATION

Chassis make: \_\_\_\_\_ Transmission Make: \_\_\_\_\_

Model: \_\_\_\_\_ Model: \_\_\_\_\_

Engine: \_\_\_\_\_ Color: \_\_\_\_\_

HP: \_\_\_\_\_ Altitude: \_\_\_\_\_

FT.

@ \_\_\_\_\_ RPM

Electrical system:  12V  24V

### PUMP RATING

NFPA 1901 Fire Pump

Other: \_\_\_\_\_

**(Options, Fill in choices)**

- Primary water type:**     Salt water                       Fresh water
- Pump material:**             Cast Iron                       Bronze (Recommended for salt water)
- Pump position:**             Rear                               Front  
(3 Gear only)
- Seal type:**                     Packing                       Mechanical Seal
- Electric Clutch:**             12V                               24V
- Electric Primer:**             12V                               24V                       None
- Primer Type:**                 Fluid                               Fluid less
- Mounting Kit:**                 Standard
- Suction Caps:**                 5"                               6"
- Discharge Valves:**  
 30° Degree Down Nipples Attached To Pump  
 30° Degree Down Nipples (Shipped Loose)
- Suction Valves: (shipped loose)**  
 2-1/2" NST Female     2-1/2" NST Female "Full Flow"
- Inline Tank to Pump Check Valve:**     3" or     4"
- 3/4" Valve Drains** (available on suction or discharge valves)
- Shock Control Module**

- Pressure Relief Valve with Remote Control and Pilot Light Installed on Pump**
- Pressure Relief Valve with Remote Control and Pilot Light** (Shipped loose)
- Suction Relief Valve with Remote Control** (Shipped loose)

**PTO Pump "IN GEAR" Indicator Switch:**

- Automatic Transmission**
- Manual Transmission**

- 3" Tubular Driveline with 2-1410 Spicer Universal Joints 10"-48"**  
(Does not Include Engine Adaptor)

- Closed Coupled Drive Line with 2-1410 Spice Universal Joints**  
(Does not Include Engine Adaptor)

- Tachometer Cable (cable only)**

- Hand Speed Counter and Cable**

- Electric Tachometer, Speed Counter and Cable**

- Master Drain Valve (8 openings)**

- Isolated Ports Multiple Drain (6 openings)**

- Pump Overheat Protection System**

- Complete suction and discharge manifolding w/ valves**

- Engine Adapter 1310 To 1410**



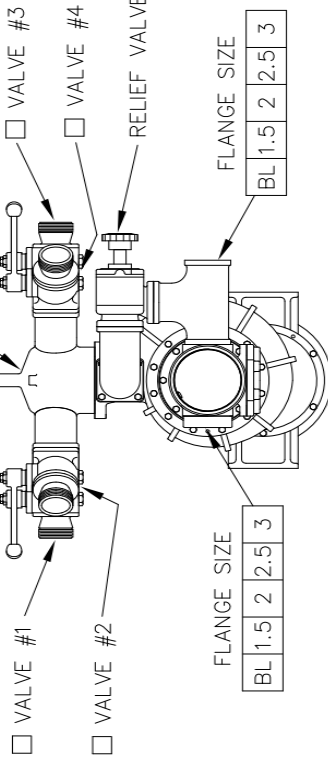
W.S. Worley & Co.

KSF PUMP ORDER FORM

DISCHARGE HEAD

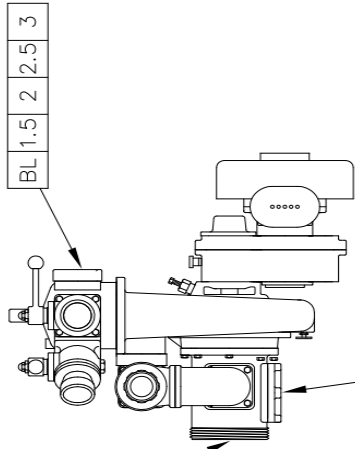
- STANDARD
- 4" NPT
- 4" WELD

IF FEWER THAN (4) VALVES, INDICATE VALVE POSITIONS



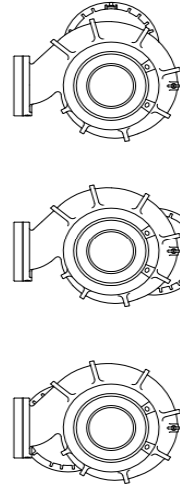
SUCTION INLET TYPE

- 5" NH (STANDARD)
- 6" VICTAULIC
- 6" NPT
- 6" NH



FLANGE SIZE 4" NPT ONLY

GEARCASE POSITIONS AS VIEWED FACING SUCTION INLET SELECT ONE



- INPUT SHAFT ABOVE
  - STANDARD
  - INPUT SHAFT RIGHT
- OPTIONAL GEAR CASE ORIENTATION

1202009  
 REV. 4  
 DEC.2000  
 L.N.  
 Rev. Date: 09/2/008  
 R/G

# Crating options/Instructions

- Standard Box**
- Wood Crate, Bark Free**
- Heat Treated Skid (Export)**
- Oversized Domestic Skid and Box (38x44)**
- Oversized Export Skid and Box (38x44)**
- Oversized Heat Treated Skid (Export 38x44)**
- Special Crating Instructions:** \_\_\_\_\_  
\_\_\_\_\_  
\_\_\_\_\_  
\_\_\_\_\_  
\_\_\_\_\_

**Additional Comments or Special Instructions**

**BSP threads instead of NPT**

---

---

---

---

---

---

---

---

---

---

---

---

---

---

---

---

---

---

---

---

---

---

---

---

---

---

---

---