

# W.S. Darley & Co.

TRUSTED WORLDWIDE SINCE 1908



## Pump Plant & Engineering

1051 Palmer Street  
Chippewa Falls, WI 54729  
Phone 800-634-7812  
Fax 715-726-2656

## Pump Sales & Corporate

325 Spring Lake Dr.  
Itasca, IL 60143-2072  
Phone (708) 345-8050  
Fax (708) 345-8993

Date: \_\_\_\_\_

Bill To: \_\_\_\_\_

P.O. No.: \_\_\_\_\_

\_\_\_\_\_

Customer No.: \_\_\_\_\_

\_\_\_\_\_

Order Completed By: \_\_\_\_\_

\_\_\_\_\_

Desired Delivery Date: \_\_\_\_\_

Ship To: \_\_\_\_\_

End Customer: \_\_\_\_\_

\_\_\_\_\_

Customer Contact:

\_\_\_\_\_

Tel No.: \_\_\_\_\_

\_\_\_\_\_

Fax No.: \_\_\_\_\_

Email: \_\_\_\_\_

# PUMP ORDER FORM

## PSM PUMP

Please review the order form before starting. If any challenges arise, please call our Customer Service Department at (800) 634-7812 for assistance. We will be glad to help. Please fill in the information **completely**.

**Rated capacity: (choose either GPM or LPM)**

GPM:  1000     1250     1500     1750 (industrial boats only)

LPM:  4000     5000     6000

\*If special testing is required, please indicate your need.

Imperial Gallons (List Capacity) \_\_\_\_\_

Liters per Minute (List Capacity) \_\_\_\_\_

Other (Specify) \_\_\_\_\_

### CHASSIS INFORMATION

Chassis make: \_\_\_\_\_ Transmission Make: \_\_\_\_\_

Model: \_\_\_\_\_ Model: \_\_\_\_\_

Engine: \_\_\_\_\_ Color: \_\_\_\_\_

HP: \_\_\_\_\_ Altitude: \_\_\_\_\_ FT.

@ \_\_\_\_\_ RPM Wheelbase: \_\_\_\_\_

Electrical system:  12V  24V Cab to Axle: \_\_\_\_\_

Air Breaks:  Yes  No Body Width:  70"  72"

Pump Gear Ratio: \_\_\_\_\_

Control Location:  Side Panel  Top Console

Lowest Gear/Torque Converter Ratio: \_\_\_\_\_

### PUMP DRIVE SHAFT INFORMATION

1. Measure distance across lugs of universal joint yoke to determine Spicer yoke series.
2. Check box of appropriate size below.
3. Spicer Lockon yoke supplied on front and rear of pump.

**NOTE:** If chassis driveline is not one of Spicer yokes listed, contact Darley Engineering.

Distance across lugs	Spicer Yoke Series
<input type="checkbox"/> 4.97	1550
<input type="checkbox"/> 5.31	1610
<input type="checkbox"/> 6.09	1710 (standard)
<input type="checkbox"/> 7.00	1760
<input type="checkbox"/> 7.55	1810

**PUMP RATING**

- NFPA 1901 Fire Pump
- Other: \_\_\_\_\_

**(Options, Fill in choices)**

- Primary water type:**     Salt water                       Fresh water
  
- Pump material:**             Cast Iron                       Bronze (Recommended for salt water)
  
- Pump position:**             Rear                               Front  
(3 Gear only)
  
- Seal type:**                     Packing                       Mechanical Seal
  
- Electric Primer:**             12V                               24V                       None
  
- Primer type:**                 Fluid                               Fluid-less
  
- Mounting Kit:**                 Standard
  
  
- Suction Tee:**  
 6" Sweep                       6" Victaulic                       5" Victaulic  
 5" Weld                         5" Weld Bronze
  
  
- Inline Butterfly Valve:**  
 Hand wheel Operated    **OR**     Electric Actuated  
  
 Manual Vented                **OR**     Automatically Vented
  
  
- Inline Valve Size:**  
 4"                               5"                               6"
  
  
- Inline Valve Piping Size:**  
 NPT                               Weld                               NST
  
  
- Suction Caps:**                 5"                               6"

**Suction Adapter:**

- 6" Suction Tee  
 6" NPT Suction Flange:  NPT  Weld  NST

**Discharge Valves:** (shipped loose)

- 2-1/2" NH Straight Nipple  2-1/2" NH 30° Down Nipple

**Suction Valves:** (shipped loose)

- 2-1/2" NH Female  2-1/2" NH Female "Full Flow"

- Inline Tank to Pump Check Valve:**  3" or  4"

- 3/4" Valve Drains** (available on suction or discharge valves)

- Pressure Relief Valve with Remote Control and Pilot Light**(Shipped loose)

- Auto-Governor**

- Suction Relief Valve with Remote Control** (Shipped loose)

- Tachometer Cable (cable only)**

- Hand Speed Counter and Cable**

- Electric Tachometer, Speed Counter and Cable**

- Master Drain Valve (8 openings)**

- Isolated Ports Multiple Drain (6 openings)**

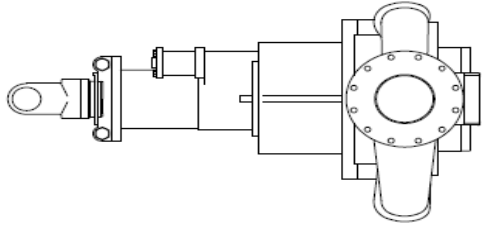
- Pump Overheat Protection System**

- Complete suction and discharge manifolding w/ valves**

- Air Power Shift**

- Remote Packing Adjustment Cables**

**W.S. Darley & Co.**  
**PSM PUMP ORDER FORM**

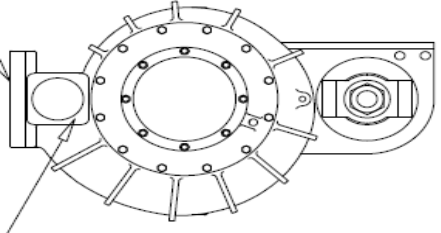


FLANGE SIZE  

BL	1.5	2	2.5	3
----	-----	---	-----	---

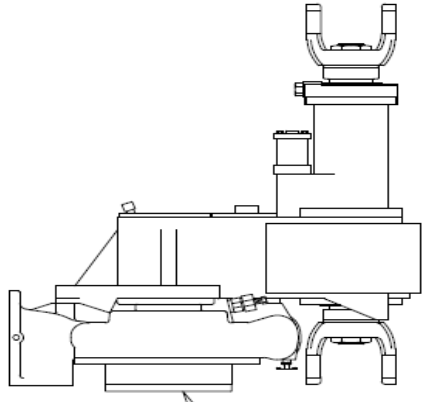
DISCHARGE FLANGE

- 4" NPT
- 4" WELD
- 5" NPT
- 5" WELD



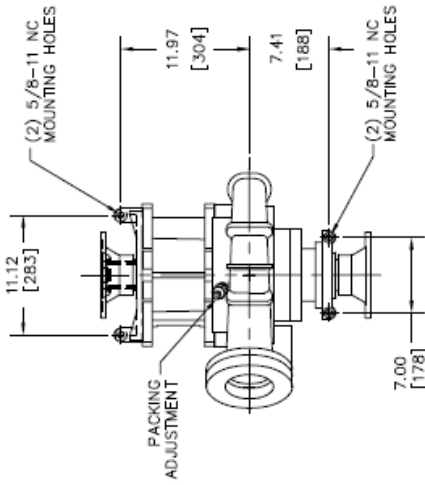
SUCTION FLANGE

- 6" NPT
- 6" WELD
- 6" VICTAULIC

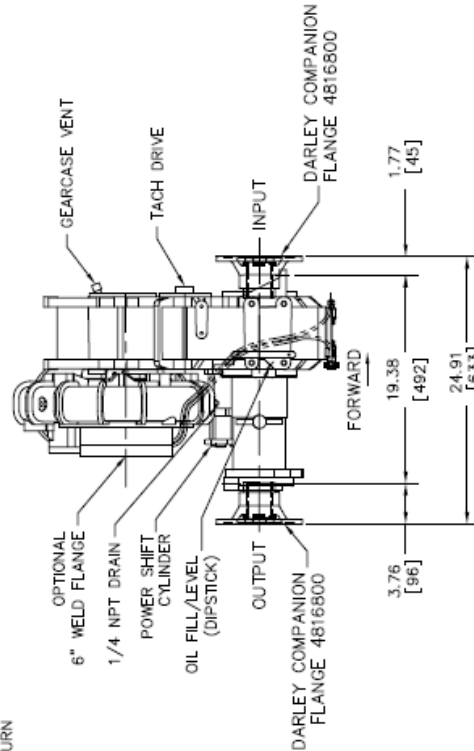
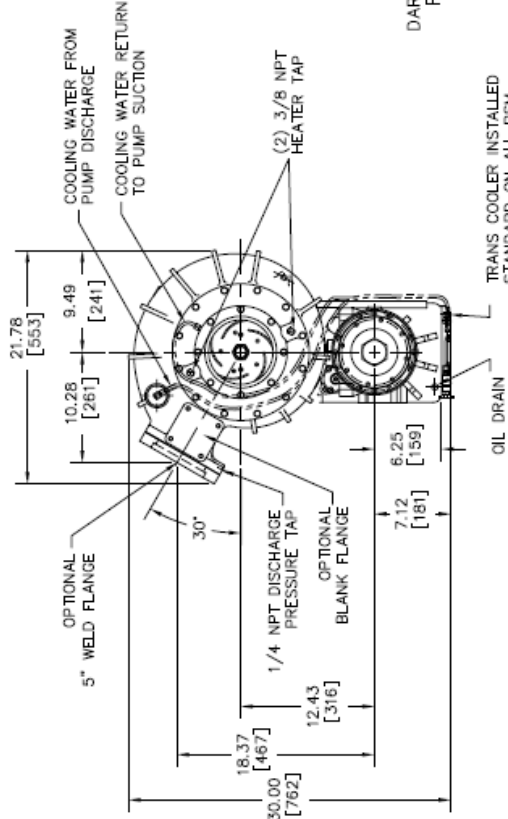
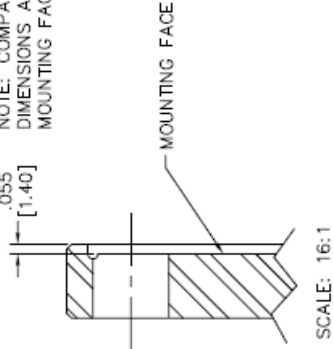


1202010  
 REV. 3  
 DEC 2000  
 LN  
 Rev Date: 09/2008  
 RJG

REVISIONS			
LT#	DESCRIPTION	DATE	CHG NO. / APPRD
A	ADDED 1/4 NPT DRAIN FITTING	01AUG06	2006-287 JMG



NOTE: COMPANION FLANGE DIMENSIONS ARE SHOWN TO MOUNTING FACE AS INDICATED.



REMOVE SHARP EDGES		TOLERANCE EXCEPT AS NOTED: .0002 IN. ANGLES AT 90°	
OLD PART NO.	PATTERN NO.	MATERIAL NO.	DO NOT SCALE PRINT
THIS DESIGN IS THE PROPERTY OF W.S. DARLEY AND CO. - UNAUTHORIZED REPRODUCTION IS PROHIBITED.			
W.S. DARLEY & CO. WELLSIDE PARK, L. - CHIPPENHAM FALLS, IN		DWC - PSM, PUMP BEARS, 30" DIMENSIONAL COMP FLANGE	
DATE 27SEP04		SCALE 1/8"	

NOTE:  
 -APPROX. WEIGHT: 475LBS [215 KG]  
 -COMPANION FLANGES FIT 1710/1760/1810

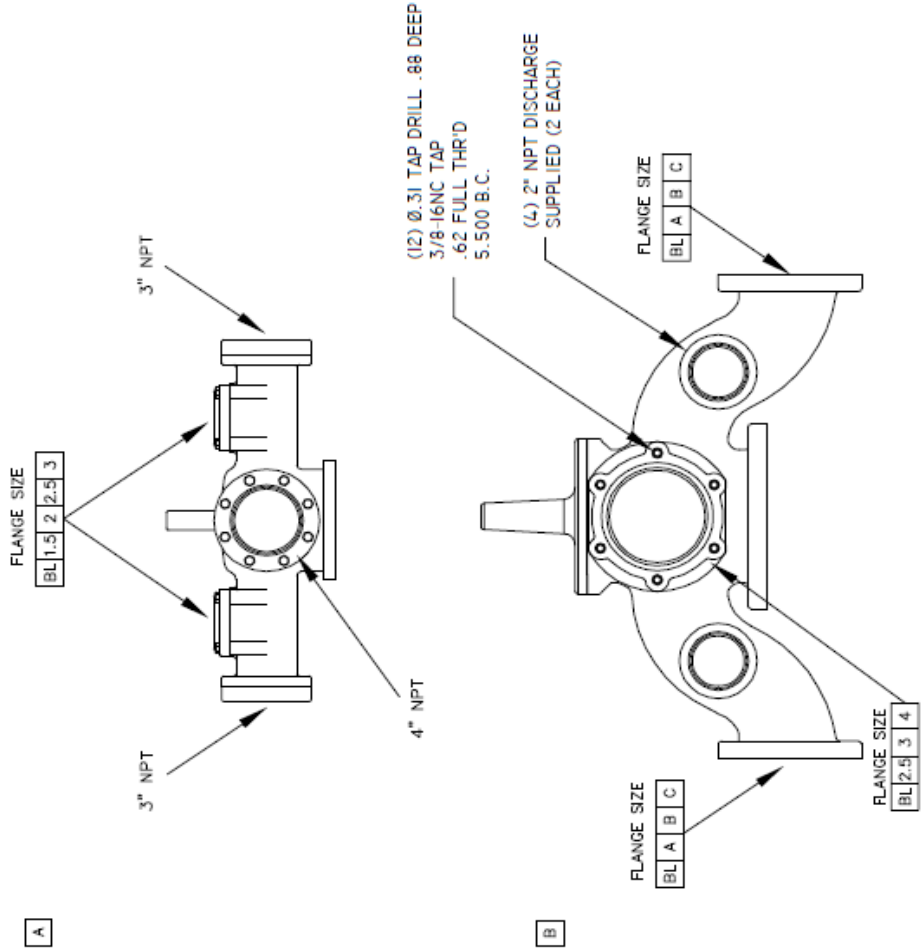
# W.S. Darley & Co.

## DISCHARGE HEAD OPTIONS

CHECK BOX FOR APPROPRIATE CHOICE OF EACH:

1. DISCHARGE HEAD LETTER.
2. DISCHARGE FLANGE SIZE.
3. DISCHARGE EXTENSION LETTER.

### DISCHARGE HEADS



1202017  
 REV. 5  
 09/26/08  
 REV DATE: 09/26/08  
 REV BY: RJG

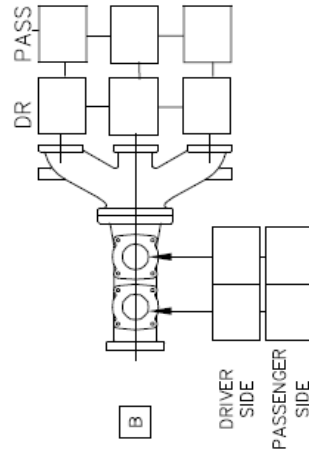
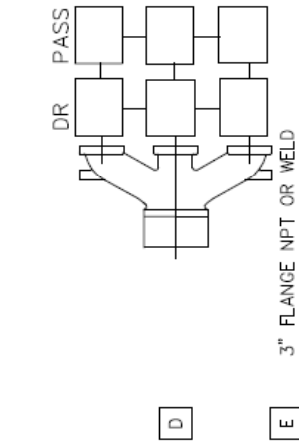
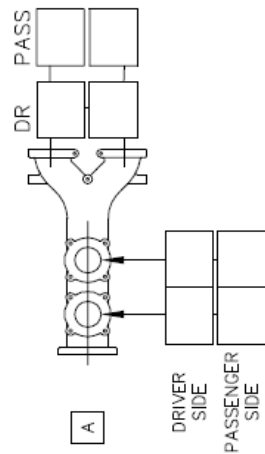
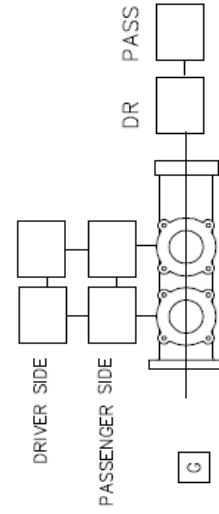
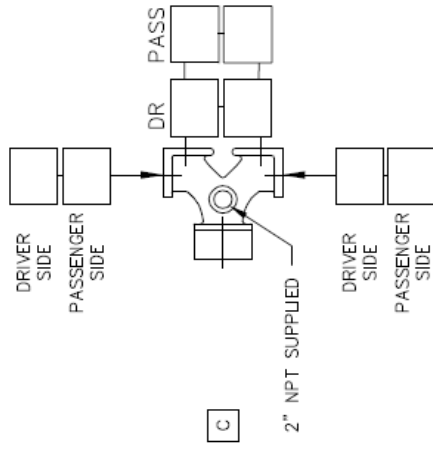
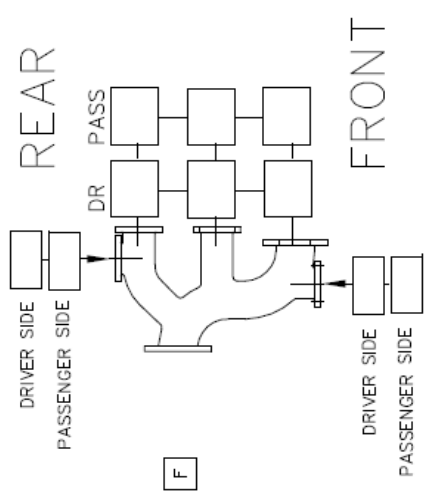
# W.S. Darley & Co.

## PSM PUMP ORDER FORM

### DISCHARGE EXTENSIONS

INDICATE REQUIRED COMPANION FLANGE SIZE IN BOX CORRESPONDING TO DISCHARGE EXTENSION SELECTED.  
 AVAILABLE FLANGE SIZES: 1 1/2", 2", 2 1/2", 3".

(FOR AKRON VALVES & LDH)





# Crating options/Instructions

- Standard Box
- Wood Crate, Bark Free
- Heat Treated Skid (Export)
- Oversized Domestic Skid and Box (38x44)
- Oversized Export Skid and Box (38x44)
- Oversized Heat Treated Skid (Export 38x44)
- Special Crating Instructions: \_\_\_\_\_  
\_\_\_\_\_  
\_\_\_\_\_  
\_\_\_\_\_  
\_\_\_\_\_

**Additional Comments or Special Instructions**

**BSP threads instead of NPT**

---

---

---

---

---

---

---

---

---

---

---

---

---

---

---

---

---

---

---

---

---

---

---