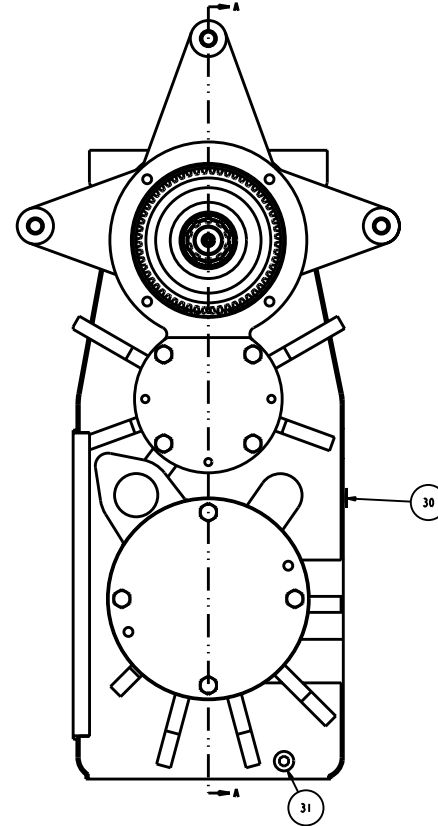
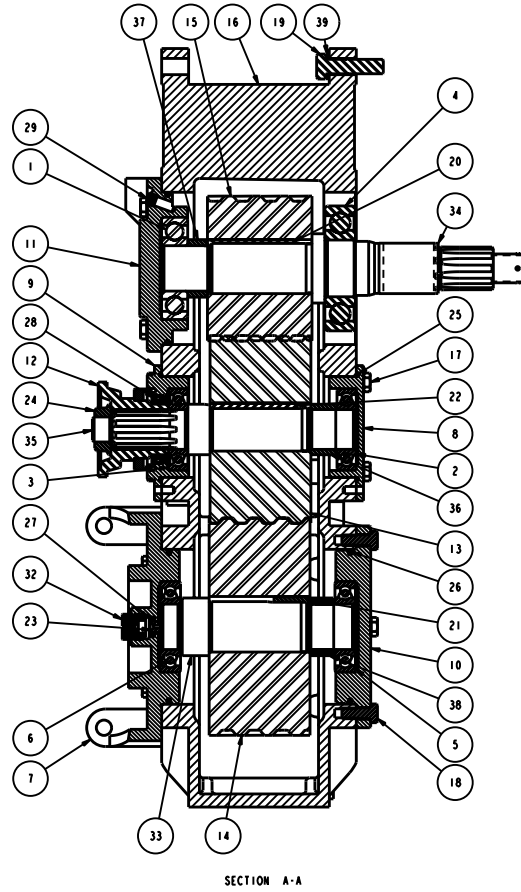


NO.	DESCRIPTION	PART NO.	QTY.
1	BEARING-BALL	-	1
2	BEARING-BALL, 2075	-	1
3	BEARING-BALL, 2075F	-	1
4	BEARING-BALL, 3105F	-	1
5	BEARING-BALL,2085	-	1
6	BEARING-BALL,2085F	-	1
7	BRACKET - BEARING, PSRH	-	1
8	CAP - BEARING, CENTER INPUT	-	1
9	CAP - BEARING, CENTER INPUT	-	1
10	CAP - BEARING, PTO DRIVE	-	1
11	CAP-BEARING, PS	-	1
12	COMP FLANGE - 1350/1410, 1.38"	-	1
13	GEAR - DRIVE, PSRH, 12DP, 14.5PA	-	1
14	GEAR - IDLER, PSRH, 12DP, 14.5PA	-	1
15	GEAR - PINION, PSRH, 12DP, 14.5PA	-	1
16	GEARCASE - HORIZ 3 GR PTO	-	1
17	HMCS - .375-16 x 0.75, GR5	-	8
18	HMCS - .375-16 x 1.00, GR5	-	12
19	HMCS - .500-13 x 2.00, GR5	-	3
20	KEY - SO., 0.25 X 3.00 GR2	-	1
21	KEY - SO., 0.38 X 1.19	-	1
22	KEY - SO., 0.38 X 3.00	-	1
23	NUT - CABLE DRIVE, KOM, 0.104	-	1
24	NUT - FLANGE, 7/8-14	-	1
25	O-RING - 3.50 x 3.69 x 0.09	-	2
26	O-RING - 5.00 x 5.25 x 0.12	-	3
27	OIL SEAL - 0.375 ID x 0.688 OD	-	1
28	OIL SEAL - 1.750 ID x 2.378 OD	-	1
29	PLUG - PIPE, 0.125, ZN SOC HD	-	1
30	PLUG - PIPE, 0.375, MAG SOC HD	-	1
31	PLUG - PIPE, 0.375, ZN SOC HD	-	1
32	PLUG - TACH, .88-18UNS	-	1
33	SHAFT - IDLER, PSRH	-	1
34	SHAFT - IMPELLER, PS	-	1
35	SHAFT-INPUT, PSRH	-	1
36	SPACER - 1.38 x 1.75 x .9055	-	1
37	SPACER - 1.57 x 2.00 x 0.69	-	1
38	SPACER - 1.58 x 2.00 x .8655	-	1
39	WASHER - LOCK, 0.500 ID	-	3

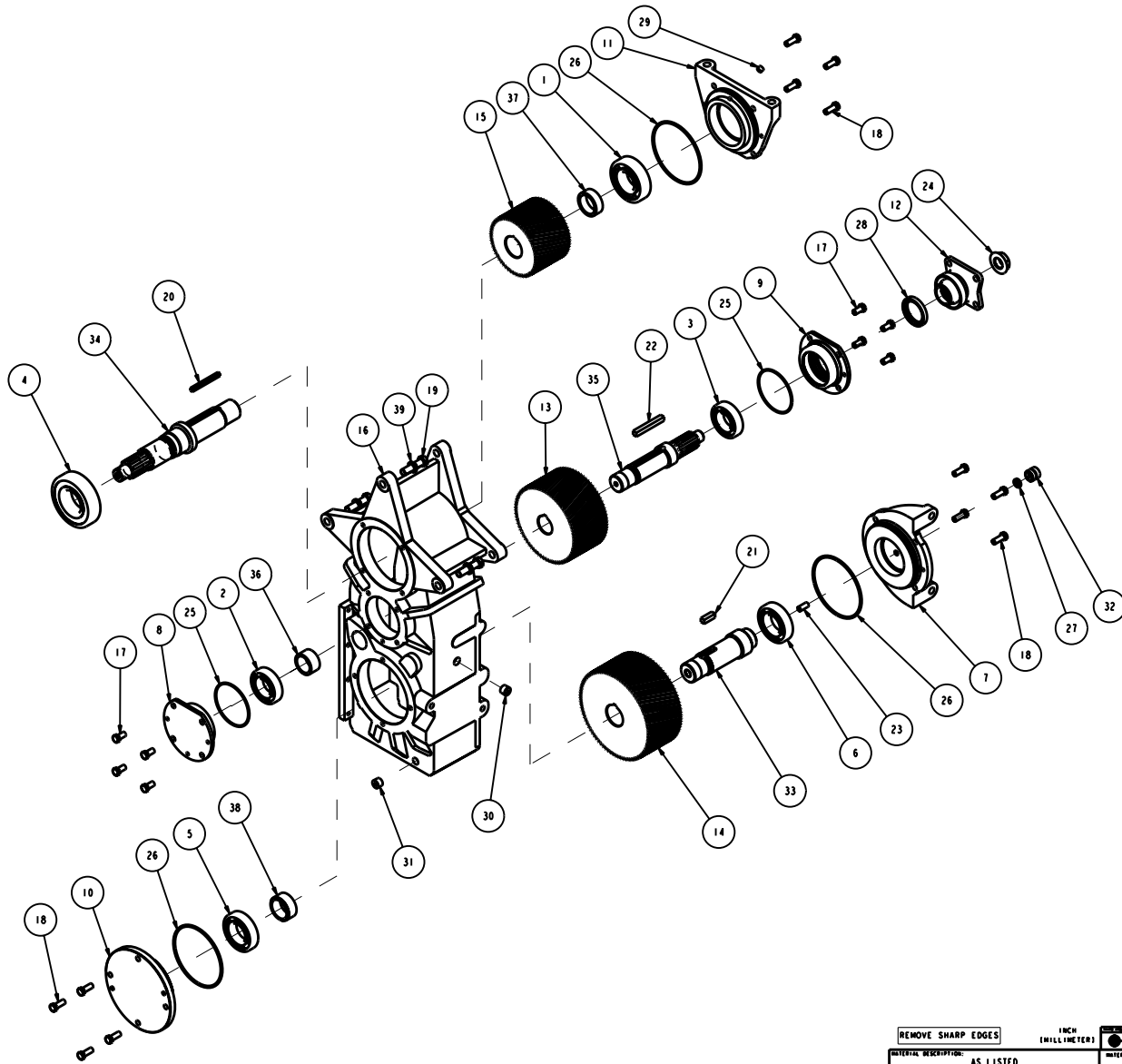


REVISIONS			
LTB	DESCRIPTION	DATE	CHG NO. APPR

REMOVE SHARP EDGES		1 INCH (25.4 MILLIMETER)	OLD PART NO.	TOLERANCE UNLESS OTHERWISE SPECIFIED	DATE 2004/2009	SCALE 1/2
MATERIAL DESCRIPTION: AS LISTED		MATERIAL NO.	PATTERN NO.	STANDARD: DPC1400	DATE 2004/2009	SCALE 1/2
THIS DESIGN IS THE PROPERTY OF D. S. BAKER AND CO. UNAUTHORIZED REPRODUCTION IS PROHIBITED		ALL DIMENSIONS IN INCHES UNLESS NOTED		DO NOT SCALE PRINT		SCALE 1/2
DPC1400				DPC1400		DPC1400

NAME:MW OBJECT:DPC1400_2 DATE:04-Jun-09 16:14:04

NO.	DESCRIPTION	PART NO.	QTY.
1	BEARING-BALL	-	1
2	BEARING-BALL, 2075	-	1
3	BEARING-BALL, 2075F	-	1
4	BEARING-BALL, 3105F	-	1
5	BEARING-BALL,2085	-	1
6	BEARING-BALL,2085F	-	1
7	BRACKET - BEARING, PSRH	-	1
8	CAP - BEARING, CENTER INPUT	-	1
9	CAP - BEARING, CENTER INPUT	-	1
10	CAP - BEARING, PTO DRIVE	-	1
11	CAP-BEARING, PS	-	1
12	COMP FLANGE - 1350/1410, 1.38"	-	1
13	GEAR - DRIVE, PSRH, 12DP, 14.SPA	-	1
14	GEAR - IDLER, PSRH, 12DP, 14.SPA	-	1
15	GEAR - PINION, PSRH, 12DP, 14.SPA	-	1
16	GEARCASE - HORIZ 3 GR PTO	-	1
17	HMCS - .375-16 x 0.75, GR5	-	8
18	HMCS - .375-16 x 1.00, GR5	-	12
19	HMCS - .500-13 x 2.00, GR5	-	3
20	KEY - SO., 0.25 X 3.00 GR2	-	1
21	KEY - SO., 0.38 X 1.19	-	1
22	KEY - SO., 0.38 X 3.00	-	1
23	NUT - CABLE DRIVE, KDM, 0.104	-	1
24	NUT - FLANGE, 7/8-14	-	1
25	O-RING - 3.50 x 3.69 x 0.09	-	2
26	O-RING - 5.00 x 5.25 x 0.12	-	3
27	OIL SEAL - 0.375 ID x 0.688 OD	-	1
28	OIL SEAL - 1.750 ID x 2.378 OD	-	1
29	PLUG - PIPE, 0.125, ZN SOC HD	-	1
30	PLUG - PIPE, 0.375, MAG SOC HD	-	1
31	PLUG - PIPE, 0.375, ZN SOC HD	-	1
32	PLUG - TACH, .88-18UNS	-	1
33	SHAFT - IDLER, PSRH	-	1
34	SHAFT - IMPELLER, PS	-	1
35	SHAFT-INPUT, PSRH	-	1
36	SPACER - 1.38 x 1.75 x .9055	-	1
37	SPACER - 1.57 x 2.00 x 0.69	-	1
38	SPACER - 1.58 x 2.00 x .8655	-	1
39	WASHER - LOCK, 0.500 ID	-	3



REVISIONS			
LTB	DESCRIPTION	DATE	ENG NO. APPR

REMOVE SHARP EDGES		1 INCH (25.4 MILLIMETER)	OLD PART NO.	TOLERANCE EXCEPT AS NOTED	DATE 20MAY2009	SCALE 1:1
MATERIAL DESCRIPTION: AS LISTED			MATERIAL NO.	PATTERN NO.	DATE 20MAY2009	SCALE 1:1
THIS DESIGN IS THE PROPERTY OF D. S. BUELL AND CO. UNAUTHORIZED REPRODUCTION IS PROHIBITED		ALL DIMENSIONS IN INCHES UNLESS NOTED	DO NOT SCALE PRINT		SCALE 1:1	SCALE 1:1
DPC1400				DPC1400		DPC1400