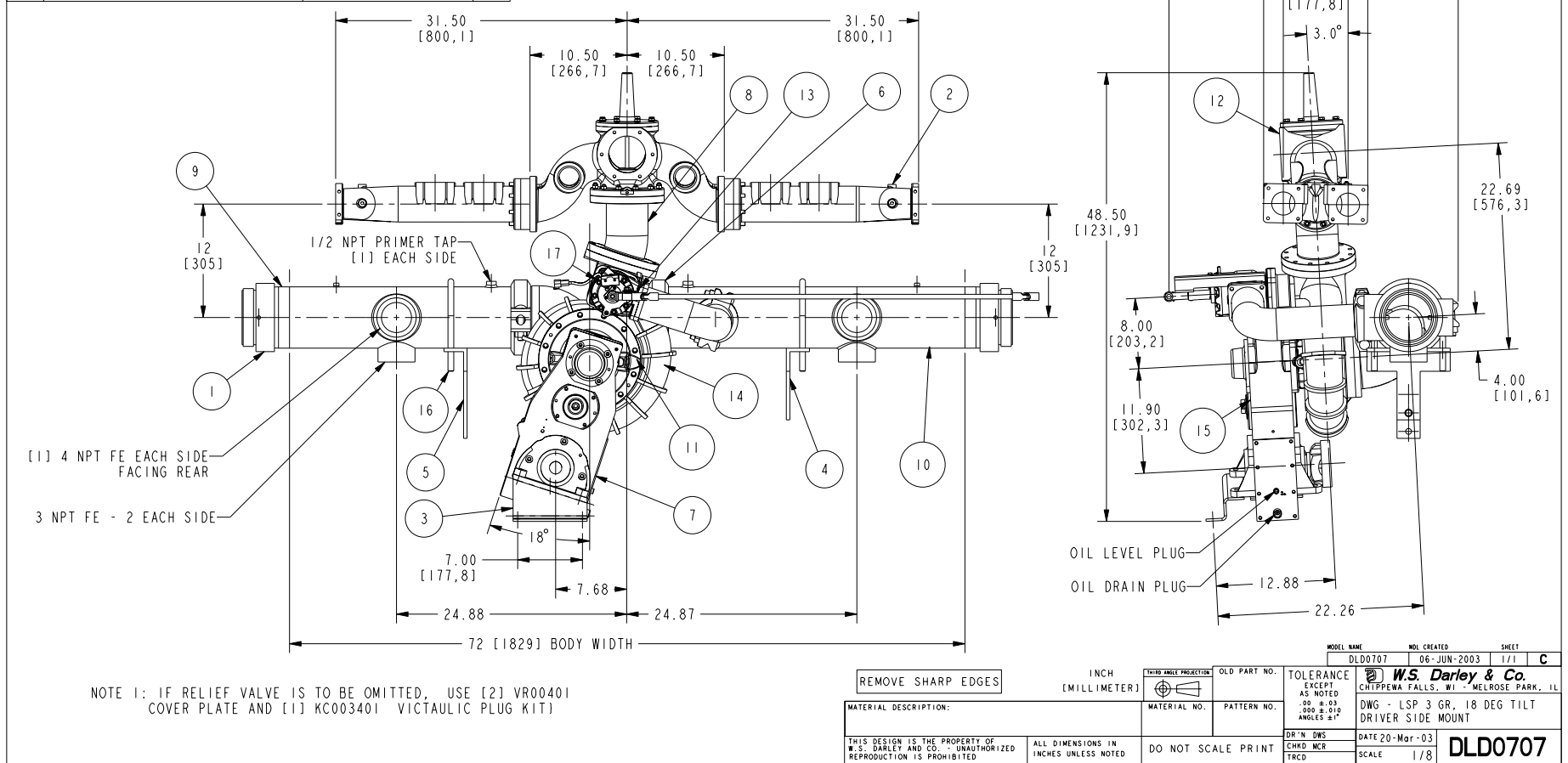


NAME:TED OBJECT:DL0707 DATE:04-Feb-04 10:30:33

NO.	DESCRIPTION	PART NO.	QTY.
1	ADAPTER - 6.0 NPT FE X 5.0 NHM	1603501	2
2	ASSY - DIS WYE, 20", W/SPACER	YE03553	2
3	BRACKET - LSP MNT, 18 DEG	4030400	1
4	BRACKET - MOUNTING, 6" PIPE	4016200	1
5	BRACKET - MOUNTING, 6" PIPE	4016300	1
6	COUPLING - 6.0 GROOVED/PAINTED	1080350	2
7	COVER - GEARCASE, LS	2504600	1
8	ELBOW - DISCH HD, LS	3108000	1
9	EXTENSION - SUCTION, LS, 28 LG	3104828	1
10	EXTENSION - SUCTION, LS, 36.12 LG	3104829	1
11	HEAD - OUTBOARD, LS, DRVER SIDE	2809803	1
12	HEAD ASSY - LDM DIS W/4" FLG	HL00112	1
13	KIT - LS 6" SWEEP TEE	KC02500	1
14	PUMP CASING - LS	2055602	1
15	TRANS - LSP, 3 GEAR LOCK-ON	TP01102_W_1804306	1
16	U-BOLT - 6" PIPE	4406800	2
17	VALVE - KIT, 3" DISCH R.V. , 12V	VR00705	1

REVISIONS			
LTR	DESCRIPTION	DATE	CHG NO. APPR'D

NOTE 1



<p>REMOVE SHARP EDGES</p>		<p>INCH (MILLIMETER)</p>		<p>THIS DRAWING IS IN THIRD ANGLE PROJECTION</p>		<p>OLD PART NO.</p>		<p>TOLERANCE EXCEPT AS NOTED .00 ±.03 .000 ±.010 ANGLES ±1°</p>		<p>W.S. Darley & Co. CHIPPENAW FALLS, WI - MELROSE PARK, IL</p>	
<p>MATERIAL DESCRIPTION:</p>				<p>MATERIAL NO.</p>		<p>PATTERN NO.</p>		<p>DR'N DWS</p>		<p>DATE 20-Mar-03</p>	
<p>THIS DESIGN IS THE PROPERTY OF W.S. DARLEY AND CO. UNAUTHORIZED REPRODUCTION IS PROHIBITED</p>				<p>ALL DIMENSIONS IN INCHES UNLESS NOTED</p>				<p>DO NOT SCALE PRINT</p>		<p>CHRD MCR</p>	
<p>SCALE 1/8</p>				<p>SCALE 1/8</p>				<p>SCALE 1/8</p>		<p>DL0707</p>	