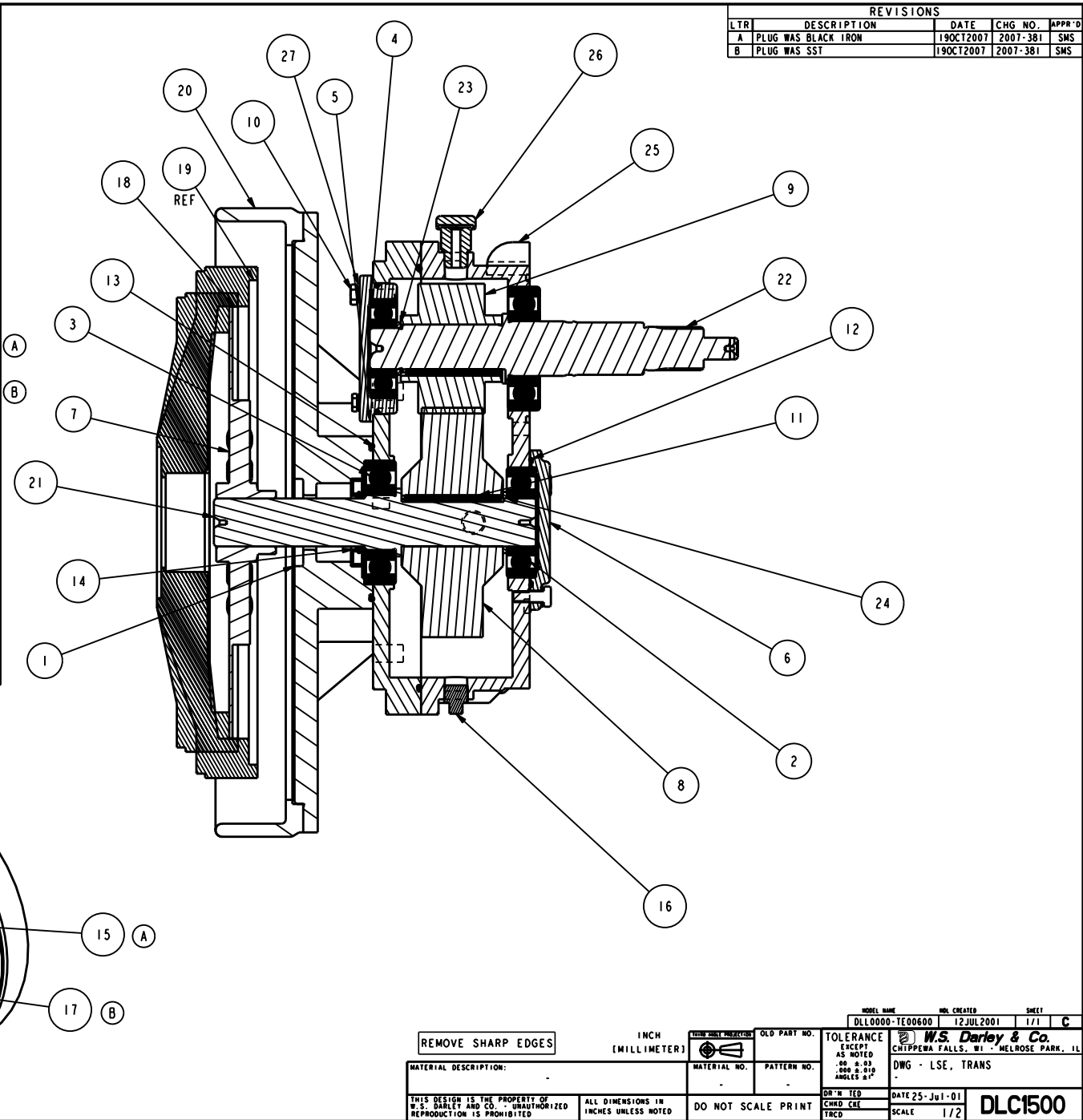


NAME:SMS OBJECT:DLC1500 DATE:19-Oct-07 11:05:00

NO.	DESCRIPTION	PART NO.	QTY.
1	ADAPTER - ENGINE, LS, SAE #3	2004000	1
2	BEARING-BALL, 307S	1721902	1
3	BEARING-BALL, 308SF	1722001	2
4	BEARING-BALL, 6306.C3	1721805	1
5	CAP - BEARING, 0 OFFSET	2301521	1
6	CAP - BEARING, KS	2302301	1
7	DRIVE DISC - TF, W/ISOLATOR	2003301	1
8	GEAR - DRIVE, LS, 12 DP	2714007	1
9	GEAR - PINION, LS, 12DP	2714108	1
10	HHCS - .313-18 x 0.88, GR5	5400019	8
11	KEY - SQ., 0.19 x 2.75	3602408	2
12	O-RING - 3.50 x 3.69 x 0.09	3601124	2
13	O-RING - 4.25 x 4.50 x 0.12	3601239	1
14	OIL SEAL - 1.375 ID X 2.506 OD	3600542	1
15	PLUG - PIPE, 0.375, ZN SOC HD	1080541	2
16	PLUG - PIPE, 0.375, MAG SO HD	1080509	1
17	PLUG - PIPE, 0.125, ZN SOC HD	1080537	4
18	SAE ENGINE FLYWHEEL	SAE10	1
19	SAE ENGINE FLYWHEEL	SAE11.5	1
20	SAE FLYWHEEL HOUSING	SAE3HOUSING	1
21	SHAFT - DRIVE, LSE	5019700	1
22	SHAFT - IMPELLER, LS	5019302	1
23	SPACER - 1.19 x 1.50 x 0.13	3302200	1
24	SPACER - 1.38 x 1.75 x 0.10	3302000	1
25	TRANS - GEARCASE ONLY, LS	TG00403	1
26	VENT - GEARCASE	4401800	1
27	WASHER - LOCK, 0.313 ID	3603502	5
28	HEX HD CAP SCREW	HHCS_BASE	1
29	KEY-SQ., 0.19 x 2.75	36024...	2
30	WASHER - LOCK, GENERIC	LOCKWSHR	1



REVISIONS				
LTR	DESCRIPTION	DATE	CHG NO.	APPR'D
A	PLUG WAS BLACK IRON	19OCT2007	2007-381	SMS
B	PLUG WAS SST	19OCT2007	2007-381	SMS

REMOVE SHARP EDGES		INCH (MILLIMETER)	OLD PART NO.	TOLERANCE EXCEPT AS NOTED ±.000 ±.010 ANGLES 2R	DATE 25-Jul-01	SCALE 1/2	DLC1500
MATERIAL DESCRIPTION:		MATERIAL NO.	PATTERN NO.	DR'N TED CHRD CBE TRCD	DATE 25-Jul-01	SCALE 1/2	DLC1500
THIS DESIGN IS THE PROPERTY OF W.S. DARLEY AND CO. UNAUTHORIZED REPRODUCTION IS PROHIBITED		ALL DIMENSIONS IN INCHES UNLESS NOTED		DO NOT SCALE PRINT		W.S. Darley & Co. CHIPPERRA FALLS, WI - MELROSE PARK, IL DWG - LSE, TRANS	