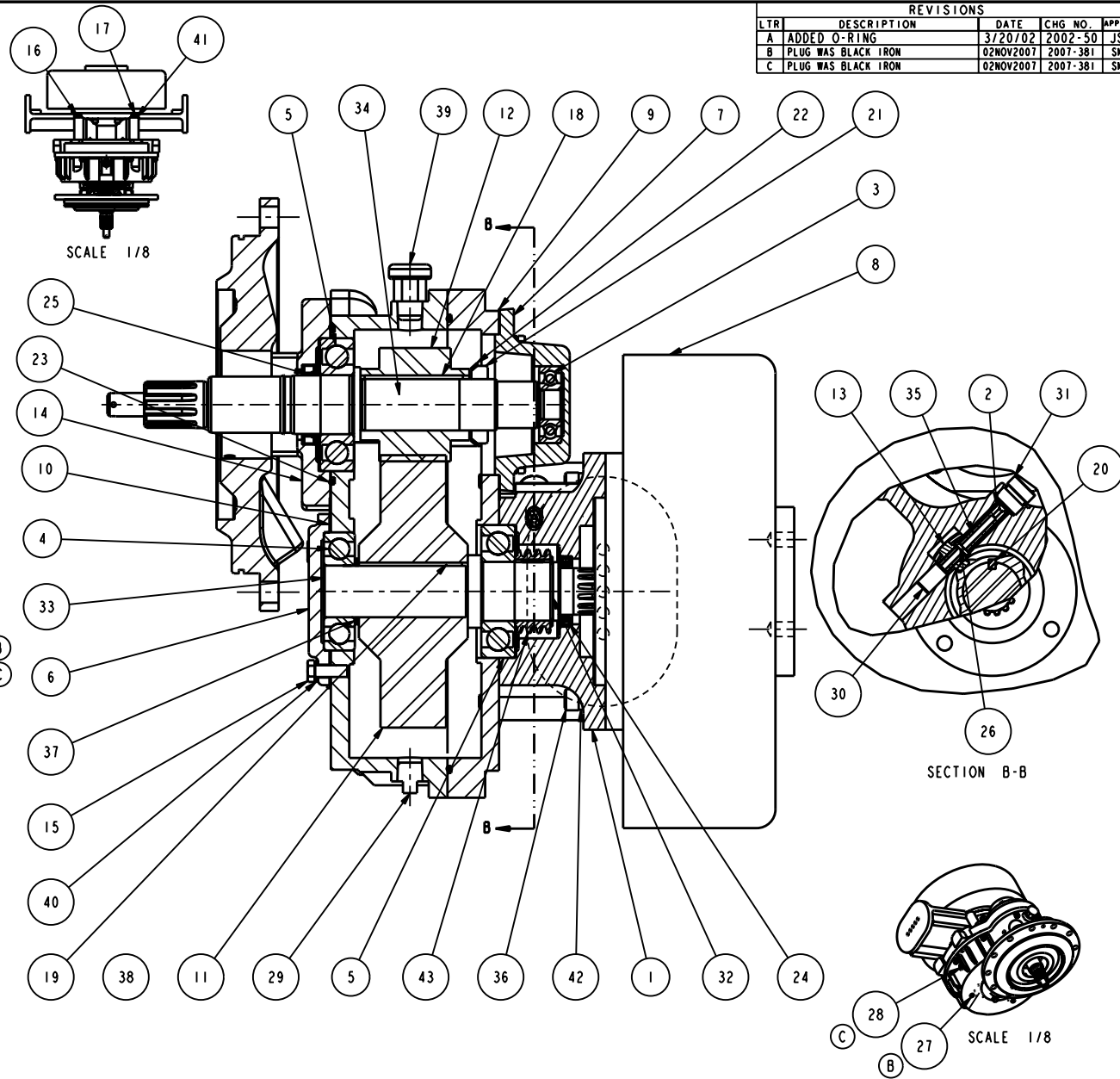


NAME:SMS OBJECT:DLC0801 DATE:02-Nov-07 14:27:49

NO.	DESCRIPTION	PART NO.	QTY.
1	ADAPTER - CLUTCH, KSF	1641501	1
2	BEARING - OILITE, 0.314 ID	1760025	1
3	BEARING-BALL, 304S	1721603	1
4	BEARING-BALL, 307S	1721902	1
5	BEARING-BALL, 308SF	1722001	2
6	CAP - BEARING, KS	2302300	1
7	CAP BEARING - KS	2303000	1
8	CLUTCH - ELECTRIC, 1000 FT-LB, 12V	4212000	1
9	GASKET - BEARING CAP, K	3813200	1
10	GASKET - TACH CASE, K/PS/RF	3812200	1
11	GEAR - DRIVE, LS, 12 DP	2714001	1
12	GEAR - PINION, LS, 12DP	2714104	1
13	GEAR - TACHOMETER, 6T, 12DP	2705600	1
14	HEAD-INBOARD, LS	2809702	1
15	HHCS - .313-18 x 0.88, GR5	5400019	7
16	HHCS - .313-18 x 2.75, GR5	5400025	4
17	HHCS - .375-16 x 3.00, GR5	5400044	4
18	KEY - SQ., 0.19 x 2.62	3602419	1
19	KEY - SQ., 0.19 x 2.75	3602408	1
20	KEY - WOODRUFF, 605 (#61)	3602201	1
21	LOCKNUT - BEARING, W07	3602107	1
22	LOCKWASHER - BEARING, W07	3602127	1
23	O-RING - 4.00 x 4.25 x 0.12	3601241	1
24	OIL SEAL - 1.250 ID X 1.878 OD	3600551	1
25	OIL SEAL - 1.563 ID X 2.129 OD	3600534	1
26	PIN - DRIVE LOK, 0.094 X 0.500	3605101	1
27	PLUG - PIPE, 0.125, ZN SOC HD	1080537	3
28	PLUG - PIPE, 0.375, ZN SOC HD	1080541	2
29	PLUG - PIPE, 0.375, MAG SQ HD	1080536	1
30	PLUG - TACH SHAFT, 0.75 LG	1141400	1
31	PLUG - TACH, .750-20, ALUM	1142100	1
32	RING - RETAINER, 5108-156	3600407	1
33	SHAFT - DRIVE, KSF/WKSF	5007600	1
34	SHAFT - IMPELLER, LS	5019305	1
35	SHAFT - TACH, PSF	5010500	1
36	SHCS - .375-16 x 1.25, GR8	5401024	8
37	SPACER - 1.38 X 1.75 X 0.10	3302000	1
38	TRANS - GEARCASE ONLY, LS	TG00403	1
39	VENT - GEARCASE	4401800	1
40	WASHER - LOCK, 0.313 ID	3603502	11
41	WASHER - LOCK, 0.375 ID	3603503	4
42	WASHER - LOCK, HC, 0.375 ID	3603512	8
43	WORM - TACHOMETER, TF, 4T	2709301	1



REVISIONS				
LTR	DESCRIPTION	DATE	CHG NO.	APPR'D
A	ADDED O-RING	3/20/02	2002-50	JSS
B	PLUG WAS BLACK IRON	02NOV2001	2007-381	SMS
C	PLUG WAS BLACK IRON	02NOV2007	2007-381	SMS

PLEASE NOTE ITEMS NOT IN TF00401 BOM:

- 1) ITEM 8 IS A VARIABLE
- 2) ITEMS 11 AND 12 ARE VARIABLE AND ARE ON KR007XX
- 3) ITEMS 14, 24 AND 33 ARE ON PUMP ASSEMBLY PLO0203/04
- 4) ITEMS 15, 16, 17, 36, 40, 41, 42 ARE ON KF01501

REMOVE SHARP EDGES		INCH (MILLIMETER)	OLD PART NO.	TOLERANCE EXCEPT AS NOTED .000 .003 .000 2.010 ANGLES 8°	DATE 31-Dec-98	SCALE 1/2	DLC0801
MATERIAL DESCRIPTION: ---		MATERIAL NO.	PATTERN NO.	DR'N WSW	CMRD	TRCD	
THIS DESIGN IS THE PROPERTY OF W.S. DARLEY AND CO. UNAUTHORIZED REPRODUCTION IS PROHIBITED		ALL DIMENSIONS IN INCHES UNLESS NOTED		DO NOT SCALE PRINT			

W.S. Darley & Co.
CANTON FALLS, WI - MELROSE PARK, IL
TRANS - LSF, W/ELEC CLUTCH