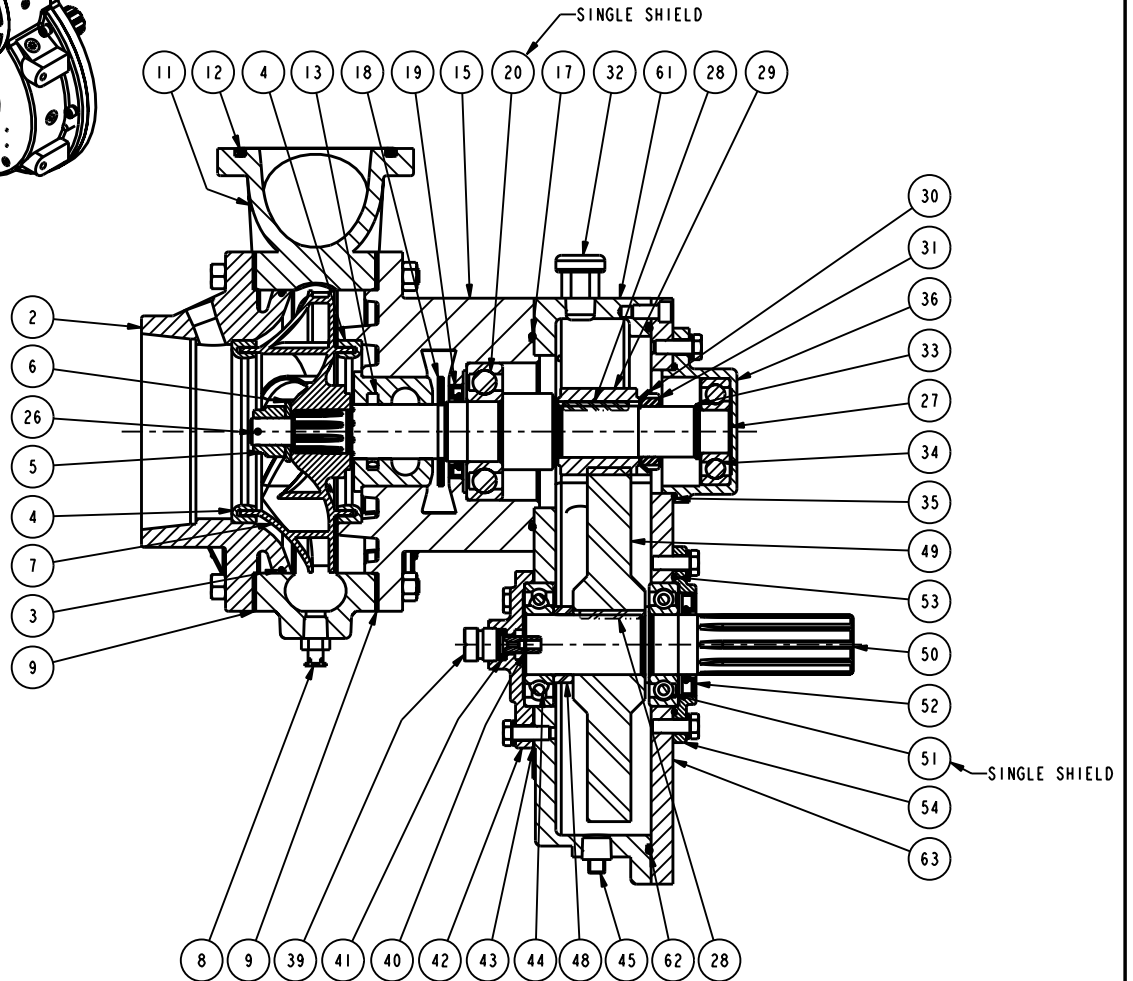
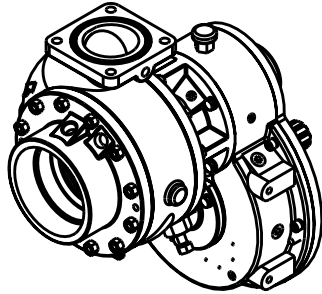


NAME:RG OBJECT:DHC2100\_1 DATE:04-Apr-08 13:36:04

NO.	DESCRIPTION	PART NO.	QTY.
1	NUT - HEX, .375-16, GR2	-	24
2	HEAD - SUCTION, H, 4 NPT SHORT	-	1
3	O-RING - 6.25 x 6.44 x 0.09	-	1
4	SEAL RING - H500	-	2
5	NUT - CASTLE, .625-18, 303 SST	-	1
6	WASHER - 0.64 X 1.25 X .12 303	-	1
7	IMPELLER - HM500, LH, AURORA	-	1
8	DRAINCOCK - 0.250 NPTM, 9KC BR	-	1
9	GASKET - PUMP CASING, H	-	2
10	STUD - 0.375-16 X 1.500, GR5	-	22
11	PUMP CASING - H, CAST IRON	-	1
12	QUAD RING - 3.25 x 3.62 x 0.19	-	1
13	STUFFING BOX	-	1
14	STUD - 0.375-16 X 2.000, GR5	-	2
15	HEAD - INBOARD, HM	-	1
16	HHCS - .313-18 x 1.00, GR5	-	4
17	O-RING - 4.25 x 4.50 X 0.12	-	1
18	SLINGER - WATER, H500, 1.21 ID	-	1
19	OIL SEAL - 1.375 ID X 2.129 OD	-	1
20	BEARING-BALL, 307SF	-	1
21	PISTON-GLAND STUD, S	-	1
22	SCREW - PACKING	-	1
23	PACKING #927 - PELLET	-	1
24	PACKING PLUNGER GUIDE - H	-	1
25	GLAND NUT - A	-	1
26	PIN - COTTER, .125 x 1.00, SST	-	1
27	SHAFT - IMPELLER, HM500	-	1
28	KEY - SQ., 0.19X1.50 GR2	-	2
29	GEAR - PINION, H100, 12DP	-	1
30	LOCKWASHER - BEARING, W06	-	1
31	LOCKNUT - BEARING, N06	-	1
32	VENT - GEARCASE	-	1
33	WASHER - .99 x 1.25 x .12 STL	-	1
34	BEARING-BALL	-	1
35	O-RING - 2.88 x 3.06 x 0.09	-	1
36	BEARING CAP	-	1
37	WASHER - LOCK, 0.313 ID	-	14
38	HHCS - .313-18 x 0.88, GR5	-	10
39	PLUG - TACH, .750-20, ALUM	-	1
40	NUT - CABLE DRIVE, KDM, 0.104	-	1
41	OIL SEAL - 0.375 ID X 0.688 OD	-	1
42	CAP - BEARING, TACHOMETER	-	1
43	GASKET - CLUTCH NUT, H	-	1
44	BEARING-BALL, 207S	-	1
45	PLUG - PIPE, 0.375, MAG SQ HD	-	1
46	PLUG - PIPE, 0.125, ZN SOC HD	-	4
47	PLUG - PIPE, 0.375, ZN SOC HD	-	4
48	SPACER - 1.38 X 1.75 X .448	-	1
49	GEAR - DRIVE, H100, 12 DP	-	1
50	SHAFT - DRIVE, HMJ, WITH TACH	-	1
51	BEARING-BALL, 207SF	-	1
52	OIL SEAL - 1.375ID X 2.378 OD	-	1
53	O-RING - 3.00 x 3.19 x 0.09	-	1
54	CAP BEARING, U/HM/JMP	-	1
55	PLUG - PIPE, 0.125, SST SOC HD	-	1
60	TRANS - GEARCASE, J	-	1
61	TRANS - GEARCASE ASSY, J	-	1
62	O-RING - 10.50 X 10.75 X .12	-	1
63	GEARCASE COVER - J	-	1
64	SHCS - .313-18 x 0.62, GR8	-	1
65	SHCS - .313-18 x 1.00, GR8	-	6
66	WASHER - LOCK, HC, 0.313 ID	-	6
67	PIN - TAPER, #6 x 1.500, GR2	-	2



NOTES:

- 1) BEARINGS WITH SINGLE SHIELDS - SHIELDED SIDE GOES TOWARD OUTSIDE OF TRANSMISSION
- 2) FASTENERS SHOWN EXPLODED VIEW (SHEET 2)
- 3) GEARCASE ASSEMBLY COMPONENTS SHOWN FOR REFERENCE ONLY

REVISIONS			
LTR	DESCRIPTION	DATE	CHG NO. APPR'D

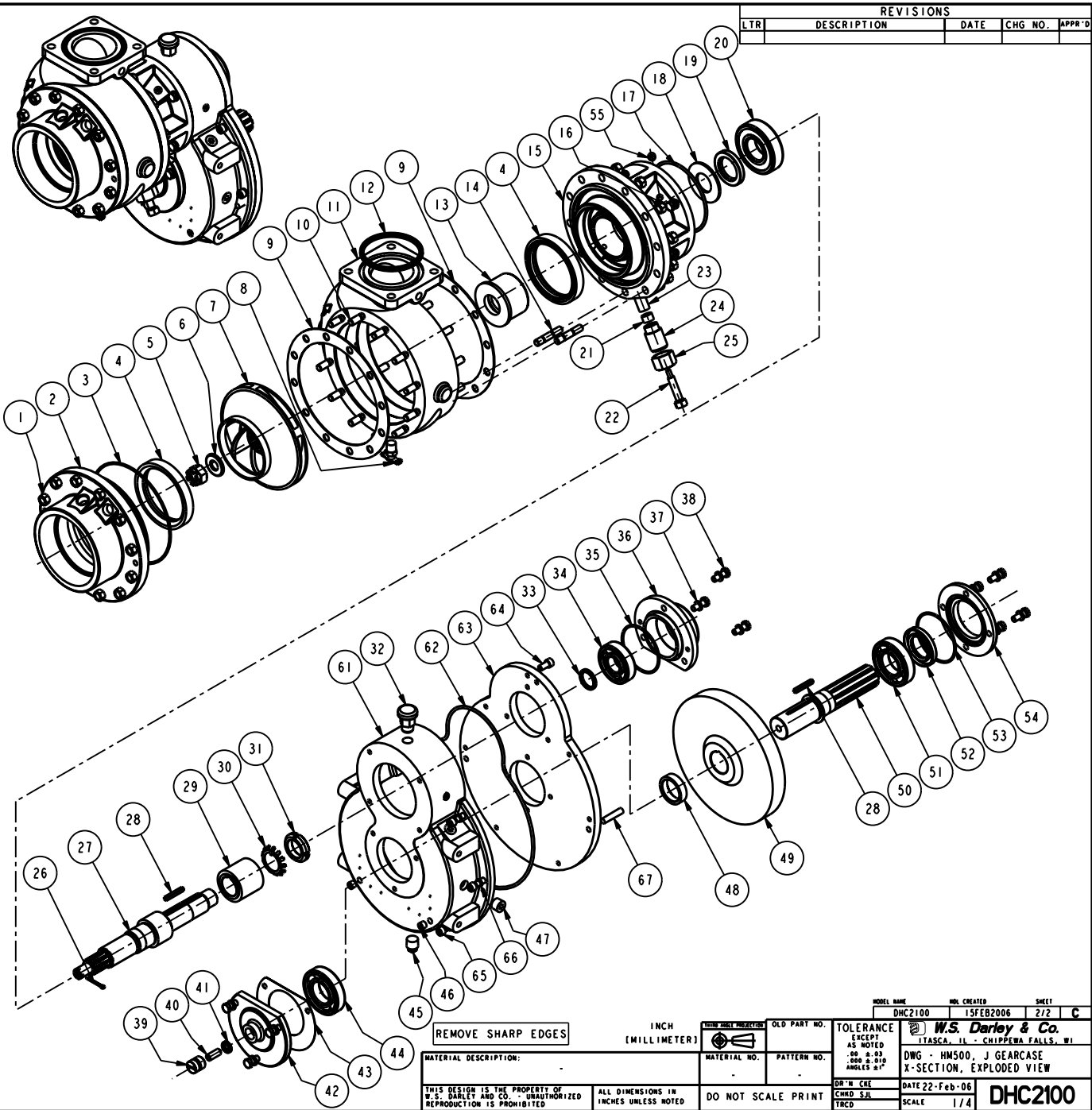
REMOVE SHARP EDGES		INCH (MILLIMETER)	OLD PART NO.	TOLERANCE EXCEPT AS NOTED .00 ±.03 .000 ±.010 ANGLES 8°	<table border="1"> <tr> <td>DATE 21-Feb-06</td> <td>SCALE 1/2</td> </tr> </table>	DATE 21-Feb-06	SCALE 1/2			
DATE 21-Feb-06	SCALE 1/2									
MATERIAL DESCRIPTION:		MATERIAL NO.	PATTERN NO.	<table border="1"> <tr> <td>DR'N CBE</td> <td>DATE 21-Feb-06</td> <td rowspan="2">DHC2100</td> </tr> <tr> <td>CMRD</td> <td>SCALE 1/2</td> </tr> </table>		DR'N CBE	DATE 21-Feb-06	DHC2100	CMRD	SCALE 1/2
DR'N CBE	DATE 21-Feb-06	DHC2100								
CMRD	SCALE 1/2									
THIS DESIGN IS THE PROPERTY OF W.S. DARLEY AND CO. - UNAUTHORIZED REPRODUCTION IS PROHIBITED		ALL DIMENSIONS IN INCHES UNLESS NOTED		DO NOT SCALE PRINT						

MODEL NAME	REV. CREATED	SHEET
DHC2100	15FEB2006	1/2 C

W.S. Darley & Co.  
TASCAS, IL - CHIPPewa FALLS, WI  
DWG - HM500, J GEARCASE  
X-SECTION, EXPLODED VIEW

NAME:RG OBJECT:DHC2100\_2 DATE:04-Apr-08 13:36:14

NO.	DESCRIPTION	PART NO.	QTY.
1	NUT - HEX, .375-16, GR2	-	24
2	HEAD - SUCTION, H, 4 NPT SHORT	-	1
3	O-RING - 6.25 x 6.44 x 0.09	-	1
4	SEAL RING - H500	-	2
5	NUT - CASTLE, .625-18, 303 SST	-	1
6	WASHER - 0.64 x 1.25 x .12 303	-	1
7	IMPELLER - HM500, LH, AURORA	-	1
8	DRAINCOCK - 0.250 NPTM, 9KC BR	-	1
9	GASKET - PUMP CASING, H	-	2
10	STUD - 0.375-16 X 1.500, GR5	-	22
11	PUMP CASING - H, CAST IRON	-	1
12	QUAD RING - 3.25 x 3.62 x 0.19	-	1
13	STUFFING BOX	-	1
14	STUD - 0.375-16 X 2.000, GR5	-	2
15	HEAD - INBOARD, HM	-	1
16	HHCS - .313-18 x 1.00, GR5	-	4
17	O-RING - 4.25 x 4.50 X 0.12	-	1
18	SLINGER - WATER, H500, 1.21 ID	-	1
19	OIL SEAL - 1.375 ID X 2.129 OD	-	1
20	BEARING-BALL, 307SF	-	1
21	PISTON-GLAND STUD, S	-	1
22	SCREW - PACKING	-	1
23	PACKING #927 - PELLET	-	1
24	PACKING PLUNGER GUIDE - H	-	1
25	GLAND NUT - A	-	1
26	PIN - COTTER, .125 x 1.00, SST	-	1
27	SHAFT - IMPELLER, HM500	-	1
28	KEY - SO., 0.19X1.50 GR2	-	2
29	GEAR - PINION, H100, 12DP	-	1
30	LOCKWASHER - BEARING, W06	-	1
31	LOCKNUT - BEARING, N06	-	1
32	VENT - GEARCASE	-	1
33	WASHER - .99 x 1.25 x .12 STL	-	1
34	BEARING-BALL	-	1
35	O-RING - 2.88 x 3.06 X 0.09	-	1
36	BEARING CAP	-	1
37	WASHER - LOCK, 0.313 ID	-	14
38	HHCS - .313-18 x 0.88, GR5	-	10
39	PLUG - TACH, .750-20, ALUM	-	1
40	NUT - CABLE DRIVE, KDM, 0.104	-	1
41	OIL SEAL - 0.375 ID X 0.688 OD	-	1
42	CAP - BEARING, TACHOMETER	-	1
43	GASKET - CLUTCH NUT, H	-	1
44	BEARING-BALL, 207S	-	1
45	PLUG - PIPE, 0.375, MAG SQ HD	-	1
46	PLUG - PIPE, 0.125, ZN SOC HD	-	4
47	PLUG - PIPE, 0.375, ZN SOC HD	-	4
48	SPACER - 1.38 X 1.75 X .448	-	1
49	GEAR - DRIVE, H100, 12 DP	-	1
50	SHAFT - DRIVE, HMJ, WITH TACH	-	1
51	BEARING-BALL, 207SF	-	1
52	OIL SEAL - 1.375ID X 2.378 OD	-	1
53	O-RING - 3.00 x 3.19 X 0.09	-	1
54	CAP BEARING, U/HM/JMP	-	1
55	PLUG - PIPE, 0.125, SST SOC HD	-	1
60	TRANS - GEARCASE, J	-	1
61	TRANS - GEARCASE ASSY, J	-	1
62	O-RING - 10.50 X 10.75 X .12	-	1
63	GEARCASE COVER - J	-	1
64	SHCS - .313-18 x 0.62, GR8	-	1
65	SHCS - .313-18 x 1.00, GR8	-	6
66	WASHER - LOCK, HC, 0.313 ID	-	6
67	PIN - TAPER, #6 x 1.500, GR2	-	2



REVISIONS			
LTR	DESCRIPTION	DATE	CHG NO. APPR'D

MODEL NAME	CHK CREATED	SHEET
DHC2100	15FEB2006	2/2 C
INCH (MILLIMETER)	OLD PART NO.	TOLERANCE EXCEPT AS NOTED .000 .003 .000 2.010 ANGLES 2X
MATERIAL DESCRIPTION:	MATERIAL NO.	PATTERN NO.
THIS DESIGN IS THE PROPERTY OF W.S. DARLEY AND CO. UNAUTHORIZED REPRODUCTION IS PROHIBITED	ALL DIMENSIONS IN INCHES UNLESS NOTED	DO NOT SCALE PRINT
DR'N CSE	DATE 22-Feb-06	SCALE 1/4
CHMD S/L	TRCD	DHC2100