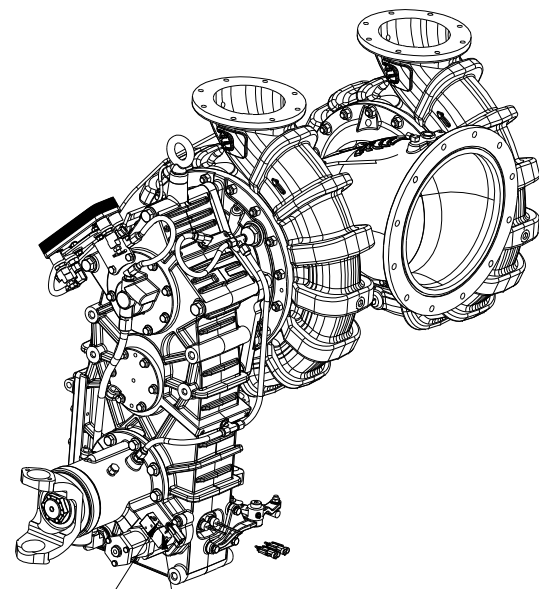


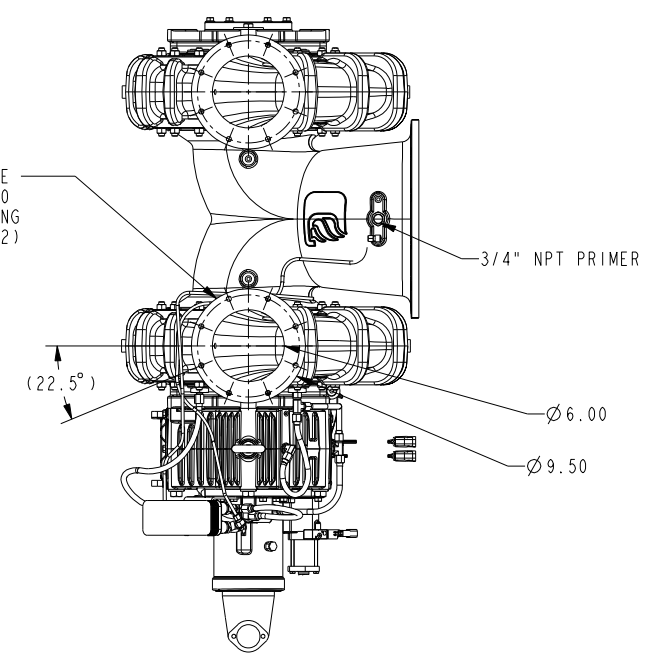
REVISIONS				
LTR	DESCRIPTION	DATE	CHG NO.	APPR'D
A	ADDED SHIFT INTERLOCK ASSEMBLY UPDATED DIPSTICK	1/23/17	11580	KMD



PNEUMATIC SHIFT
1/8" NPT TAP
(SUPPLY AIR PRESSURE
FOR ROAD MODE, VENT AIR
FOR PUMP MODE)

OPTIONAL SHIFT INTERLOCK
ASSEMBLY: AH00600
(MUST BE PURCHASED WITH PUMP)

DISCHARGE FLANGE
1/2-13 UNC-2B TAP ∇ 0.780
ON AN \varnothing 8.50 BC WITH 45° SPACING
TYP (x2)



DISCHARGE PRESSURE TAP
1/4" NPT (x 6)

3/4" NPT PRIMER TAP

(22.5°)

\varnothing 6.00

\varnothing 9.50

3/4" NPT DRAIN
(PUMP CASING x2)

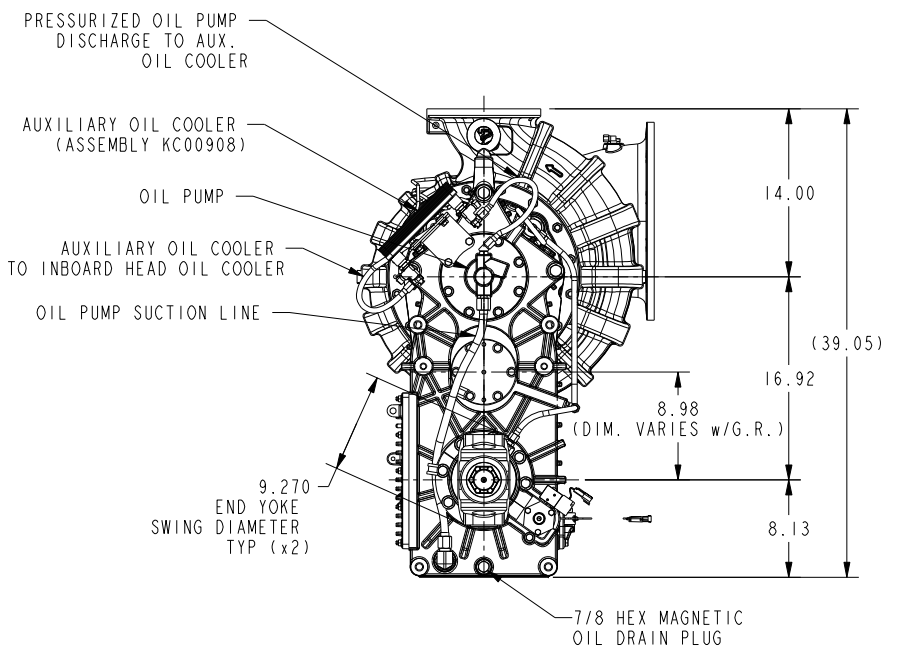
WATER RETURN LINE
FOR OIL COOLER

WATER SUPPLY LINE
FOR OIL COOLER

OIL FILL PORT &
OIL LEVEL DIP STICK
PN: 4219001
*SEE NOTE

1/8" NPT TAIL SHAFT
RESERVOIR OIL LEVEL

LIFTING EYE (2 OF 2)



PRESSURIZED OIL PUMP
DISCHARGE TO AUX.
OIL COOLER

AUXILIARY OIL COOLER
(ASSEMBLY KC00908)

OIL PUMP

AUXILIARY OIL COOLER
TO INBOARD HEAD OIL COOLER

OIL PUMP SUCTION LINE

14.00

(39.05)

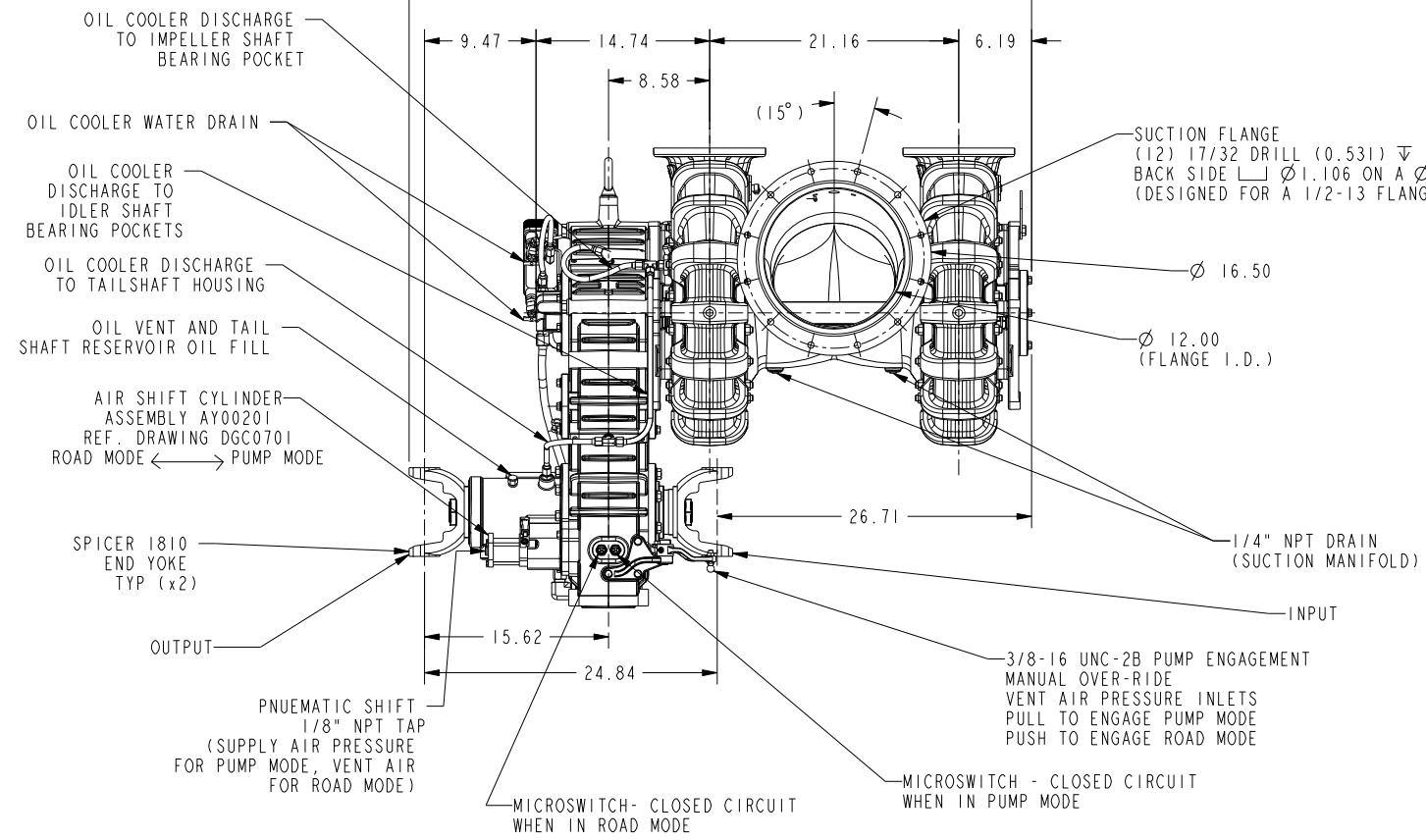
16.92

8.98
(DIM. VARIES W/G.R.)

9.270
END YOKE
DIAMETER
TYP (x2)

8.13

7/8 HEX MAGNETIC
OIL DRAIN PLUG



OIL COOLER DISCHARGE
TO IMPELLER SHAFT
BEARING POCKET

OIL COOLER WATER DRAIN

OIL COOLER
DISCHARGE TO
IDLER SHAFT
BEARING POCKETS

OIL COOLER DISCHARGE
TO TAILSHAFT HOUSING

OIL VENT AND TAIL
SHAFT RESERVOIR OIL FILL

AIR SHIFT CYLINDER
ASSEMBLY AY00201
REF. DRAWING DGC0701
ROAD MODE ← PUMP MODE

SPICER 1810
END YOKE
TYP (x2)

OUTPUT

PNEUMATIC SHIFT
1/8" NPT TAP
(SUPPLY AIR PRESSURE
FOR PUMP MODE, VENT AIR
FOR ROAD MODE)

MICROSWITCH- CLOSED CIRCUIT
WHEN IN ROAD MODE

MICROSWITCH - CLOSED CIRCUIT
WHEN IN PUMP MODE

SUCTION FLANGE
(12) 17/32 DRILL (0.531) ∇ THRU
BACK SIDE \perp \varnothing 1.106 ON A \varnothing 15.25 B.C.
(DESIGNED FOR A 1/2-13 FLANGE NUT)

\varnothing 16.50

\varnothing 12.00
(FLANGE I.D.)

1/4" NPT DRAIN
(SUCTION MANIFOLD)

INPUT

3/8-16 UNC-2B PUMP ENGAGEMENT
MANUAL OVER-RIDE
VENT AIR PRESSURE INLETS
PULL TO ENGAGE PUMP MODE
PUSH TO ENGAGE ROAD MODE

52.86

9.47

14.74

21.16

6.19

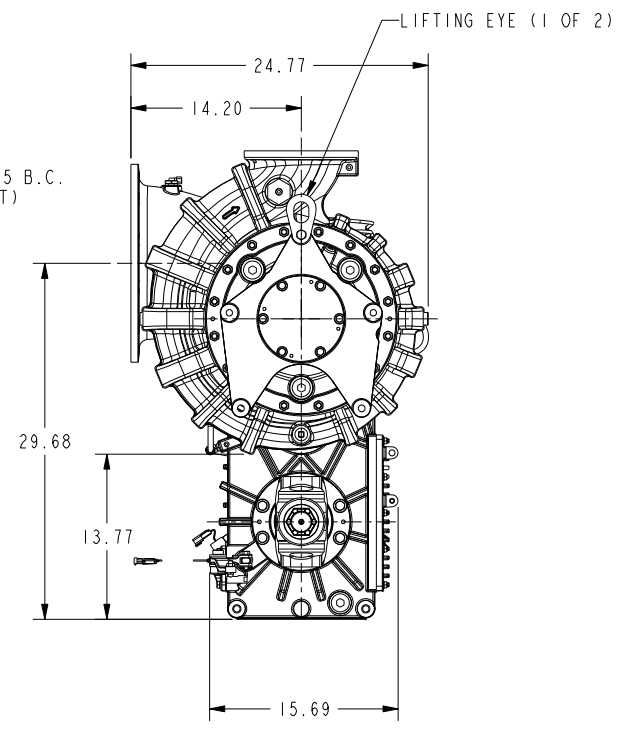
8.58

(15°)

26.71

15.62

24.84



LIFTING EYE (1 OF 2)

24.77

14.20

29.68

13.77

15.69

NOTE:
1.) APPROXIMATE WEIGHT: 1300 LBS (590 Kg)
2.) SHOWN WITH A 1.36:1 GEAR RATIO
3.) 3601271 O-RING IS USED ON THE SUCTION FLANGE
OIL LEVEL DIPSTICK 4219001 IS INTENDED TO BE USED
ON A 3 GEAR MEGA TRANSMISSION THAT INCLUDES A 1.36:1 GEAR
RATIO THAT WILL BE INSTALLED AT A VERTICAL 10
DEGREE OFFSET (AS SHOWN IN DRAWING DZD0106)

REF NOTE:
ASSEMBLIES INCLUDED
IN DRAWING:

- 1.) PZ00101
- 2.) TM00710
- 3.) KC00908
- 4.) KD02210
- 5.) AH00600
- 6.) KR08006

REMOVE SHARP EDGES

INCH
(MILLIMETER)

THIRD ANGLE PROJECTION
OLD PART NO.
X8778

TOLERANCE
EXCEPT
AS NOTED

W.S. Darley & Co.
ITASCA, IL - CHIPPEWA FALLS, WI

MATERIAL DESCRIPTION:

MATERIAL NO. PATTERN NO.

00 ±.03
1000 ±.010
ANGLES ±.1°

DWG - 2ZSM, STANDARD CONF.
PUMP FORWARD

THIS DESIGN IS THE PROPERTY OF
W.S. DARLEY AND CO. - UNAUTHORIZED
REPRODUCTION IS PROHIBITED

ALL DIMENSIONS IN
INCHES UNLESS NOTED

DO NOT SCALE PRINT

DR'N KMD
CHKD WAR
TRCD

DATE 16-MAR-17
SCALE 1/8
DZD0105

MODEL NAME: FP01933
MOL CREATED: 1/1
SHEET: 1/1