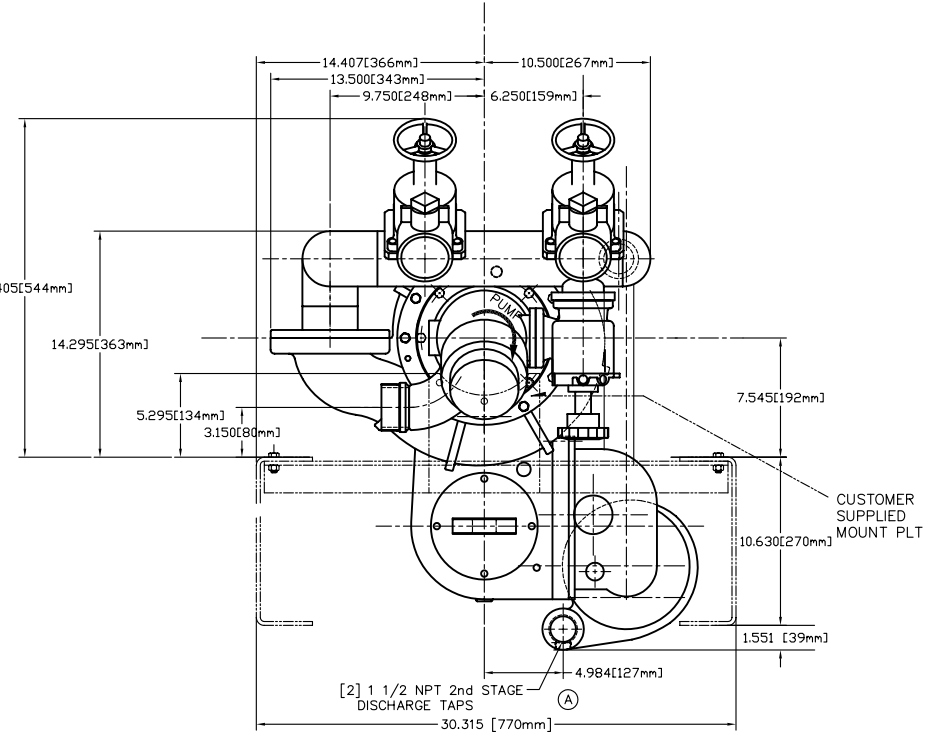
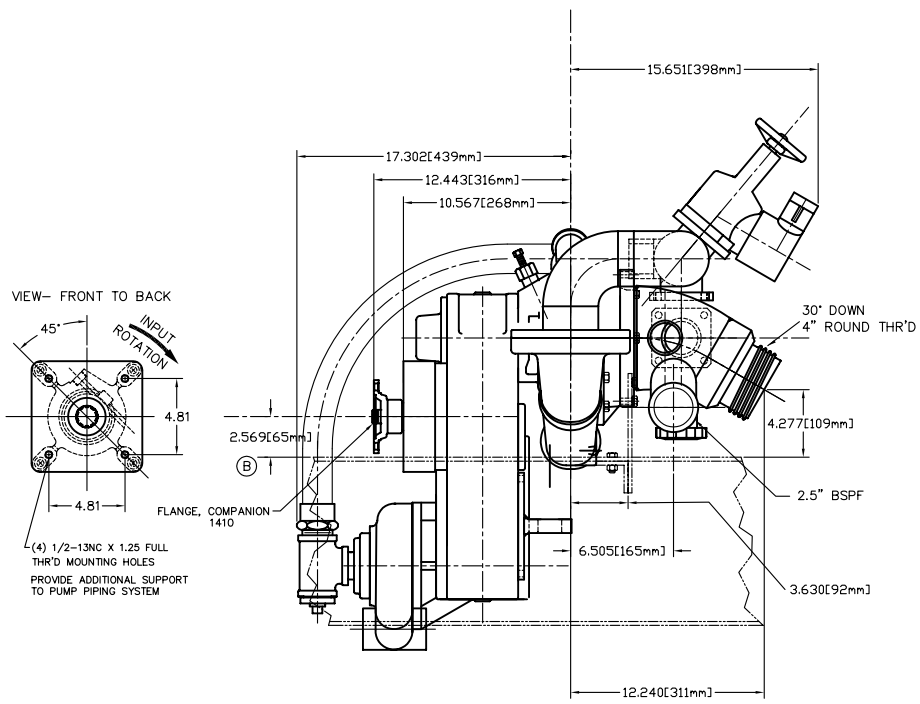


REVISIONS				
LTR	DESCRIPTION	DATE	CHG. NO.	APPRO.



(4) 1/2-13NC X 1.25 FULL THR'D MOUNTING HOLES PROVIDE ADDITIONAL SUPPORT TO PUMP PIPING SYSTEM

- ⓑ MOVED INPUT LOCATION FOR GEAR RATIO WAS 26MM WMW 7-2-96
- Ⓐ CORRECTED DIMEN AND DATE WMW 6-20-96

REMOVE SHARP EDGES

MATERIAL DESCRIPTION:		MATERIAL NO.:	PATTERN NO.:	OLD PART NO. K752-3	TOLERANCE EXCEPT AS NOTED DIM. IN INCHES ANGLES 90°	W.S. DARLEY & Co. MELROSE PARK, IL - CRIPPEL FALLS, WI DWG - KSRH DIMENSIONAL
THIS DESIGN IS THE PROPERTY OF W.S. DARLEY AND CO. - UNAUTHORIZED REPRODUCTION IS PROHIBITED.		DO NOT SCALE PRINT		DATE JUNE 19, 96		

INCH (MILLIMETER)

DKD0207