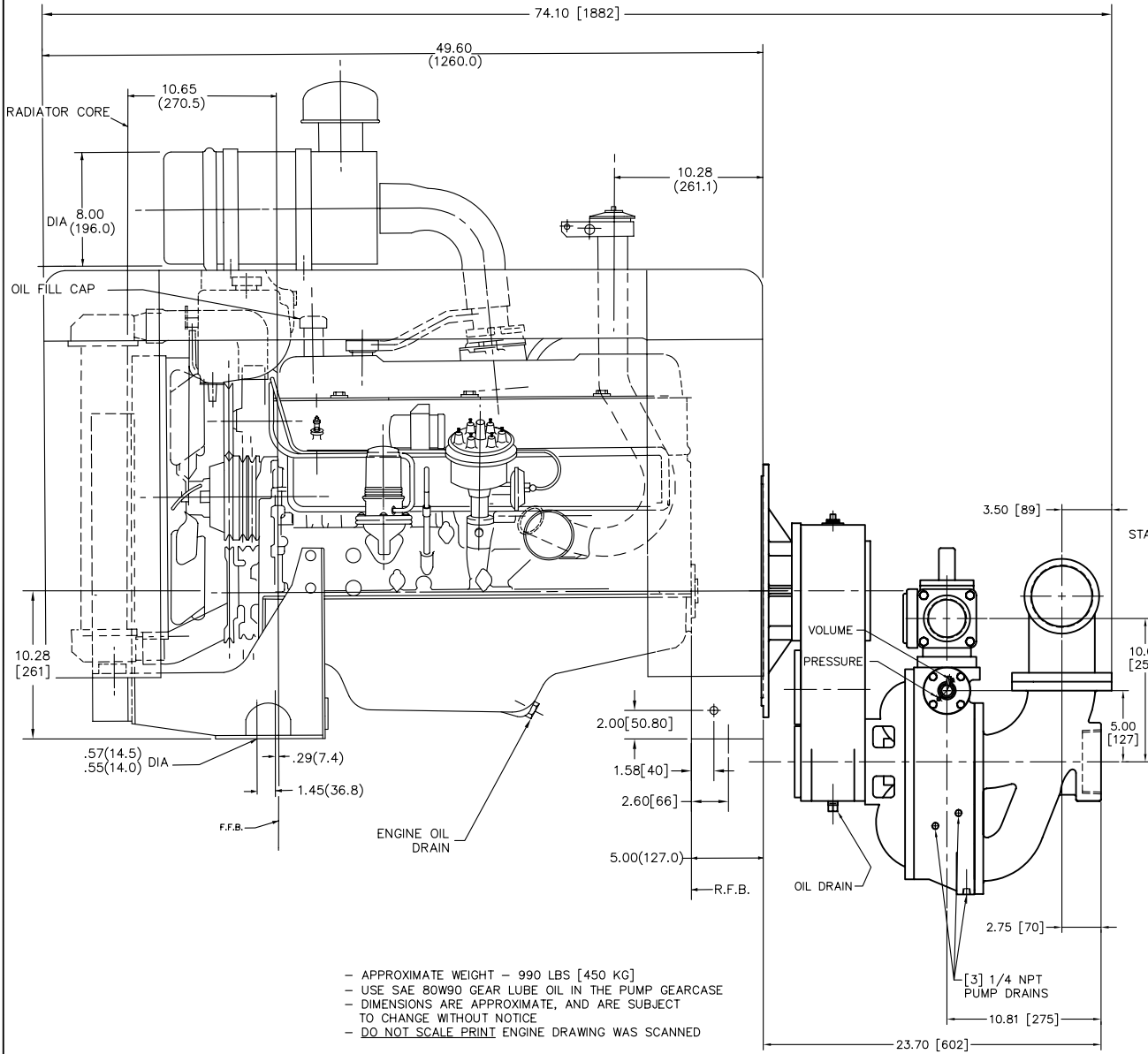


REVISIONS				
LT#	DESCRIPTION	DATE	CHG NO.	APPRD



- APPROXIMATE WEIGHT - 990 LBS [450 KG]
- USE SAE 80W90 GEAR LUBE OIL IN THE PUMP GEARCASE
- DIMENSIONS ARE APPROXIMATE, AND ARE SUBJECT TO CHANGE WITHOUT NOTICE
- DO NOT SCALE PRINT ENGINE DRAWING WAS SCANNED

