

# **W.S. DARLEY & CO.**

## **SHIFT LEVER INSTALLATION**

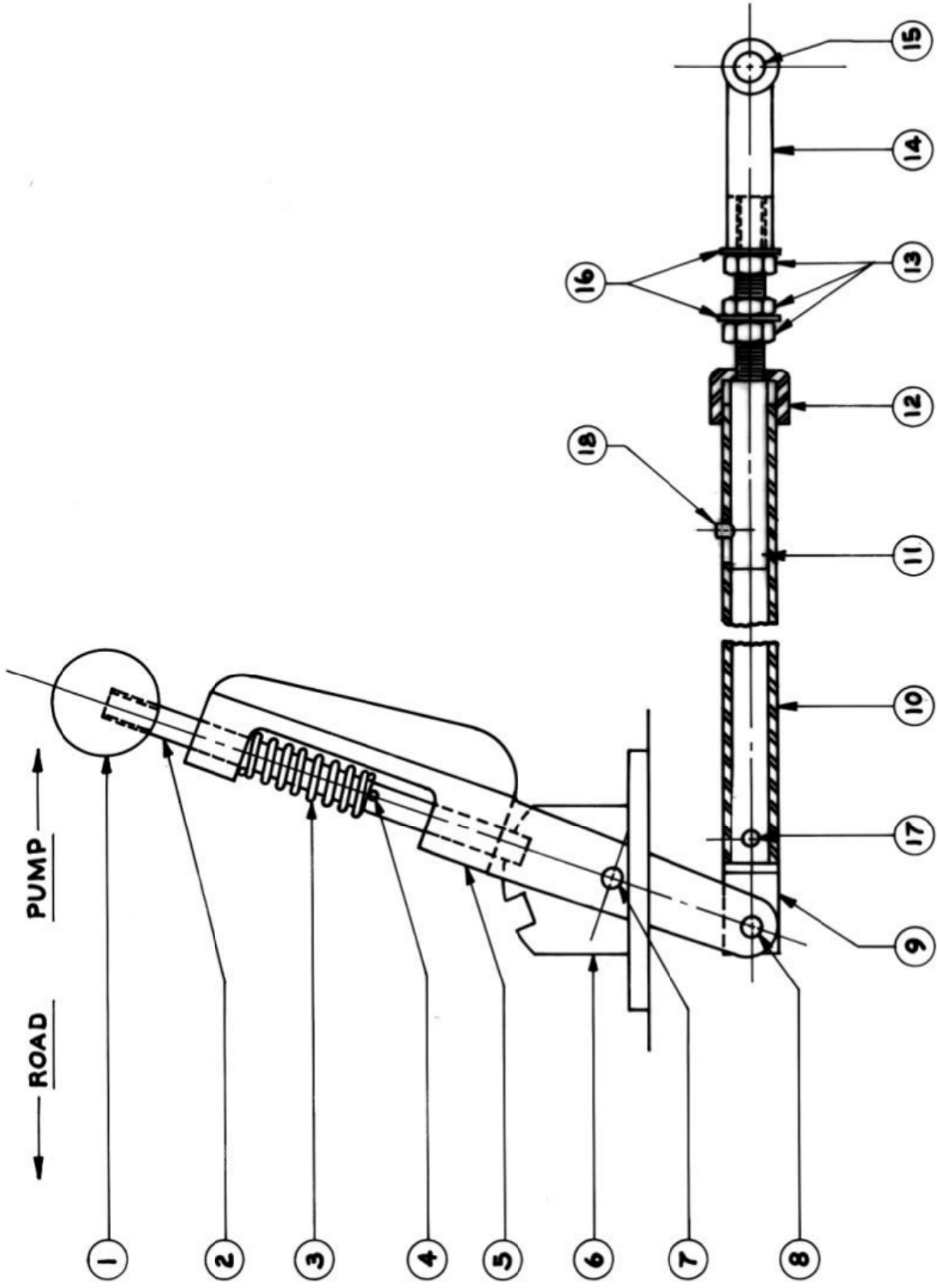
### **Refer to Drawing DGC0400**

- 1.** Bolt clutch shift lever base (6) to the floor of the truck ahead of driver's seat with the lower end of lever in approximate alignment with the clutch shift bar which slides in and out of the front of the transmission case. If the floor board is not securely fastened and strong, an auxiliary support must be provided because the clutch lever assembly must be rigid.
- 2.** Place shift lever (5) to rear "Pump" position.
- 3.** Pin connect rod eyebolt (9) to end of shift lever with clevis pin (8).
- 4.** Fully thread adjustable yoke (14) and connect yoke and rod assembly to clutch shift bar with clevis pin (15).
- 5.** Pull clutch shift bar out all the way to "Pump" position.
- 6.** Place connecting rod (10) along side of eyebolt (9), pulling on rod to allow shoulder on adjusting bolt (11) to bear against cap (12).
- 7.** Mark connecting rod at shoulder of eyebolt.
- 8.** Cut off excess connecting rod at mark, align clevis pin (15) with switch arm, and weld or pin to eyebolt using two (2) 3/16" rivets through both parts.
- 9.** Reconnect rod assembly at both ends and secure with cotter keys.
- 10.** Move shift lever towards "Road" position. Move adjuster nut next to cap (12) until clutch shift bar is fully engaged in "Road" gear and cotter pin (4) is engaged in notch at "Road" position.
- 11.** Tighten locknuts (13).

**IF FURTHER INFORMATION IS NEEDED, CALL W.S. DARLEY & CO. AT  
CHIPPEWA FALLS, WI. AT 800-634-7812 or 715-726-2650**

**PARTS LIST - DRAWING DGC0400  
CLUTCH SHIFT LEVER ASSEMBLY**

REP. NO.	NAME OF PART
1	Latch Knob
2	Latch Rod
3	Latch Spring
4	Cotter Pin
5	Shift Lever
6	Shift Lever Base
7	Clevis Pin
8	Clevis Pin
9	Eye Bolt
10	Connecting Rod
11	Adjusting Bolt
12	Connecting Rod Cap
13	Nut
14	Adjustable Yoke End
15	Clevis Pin and Cotter Key
16	Shakeproof Washer
17	Rivet Pin
18	Spring Pin



W.S. DARLEY & Co., Melrose Park, Ill.		
CLUTCH SHIFT LEVER ASSY.		
Dr. J. C. M.	Sc. HALF	DGC0400
Tr. D. E. M.	4-15-94	G2550

OK